

8 gyrus

longitudinal  
fissure

4  
cerebellum  
(vermis)

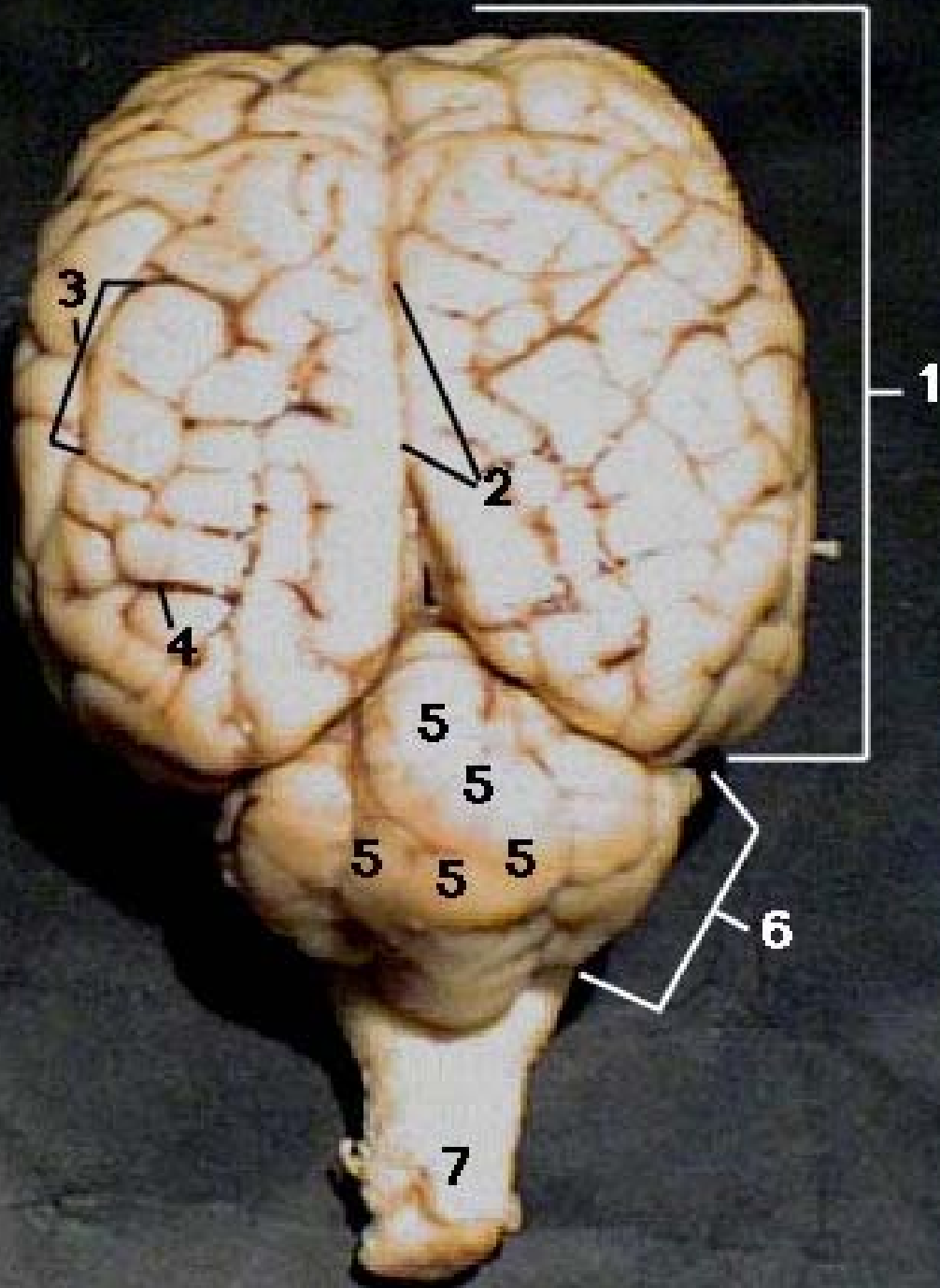
5  
medulla  
oblongata

3  
cerebellum  
(lateral lobe)

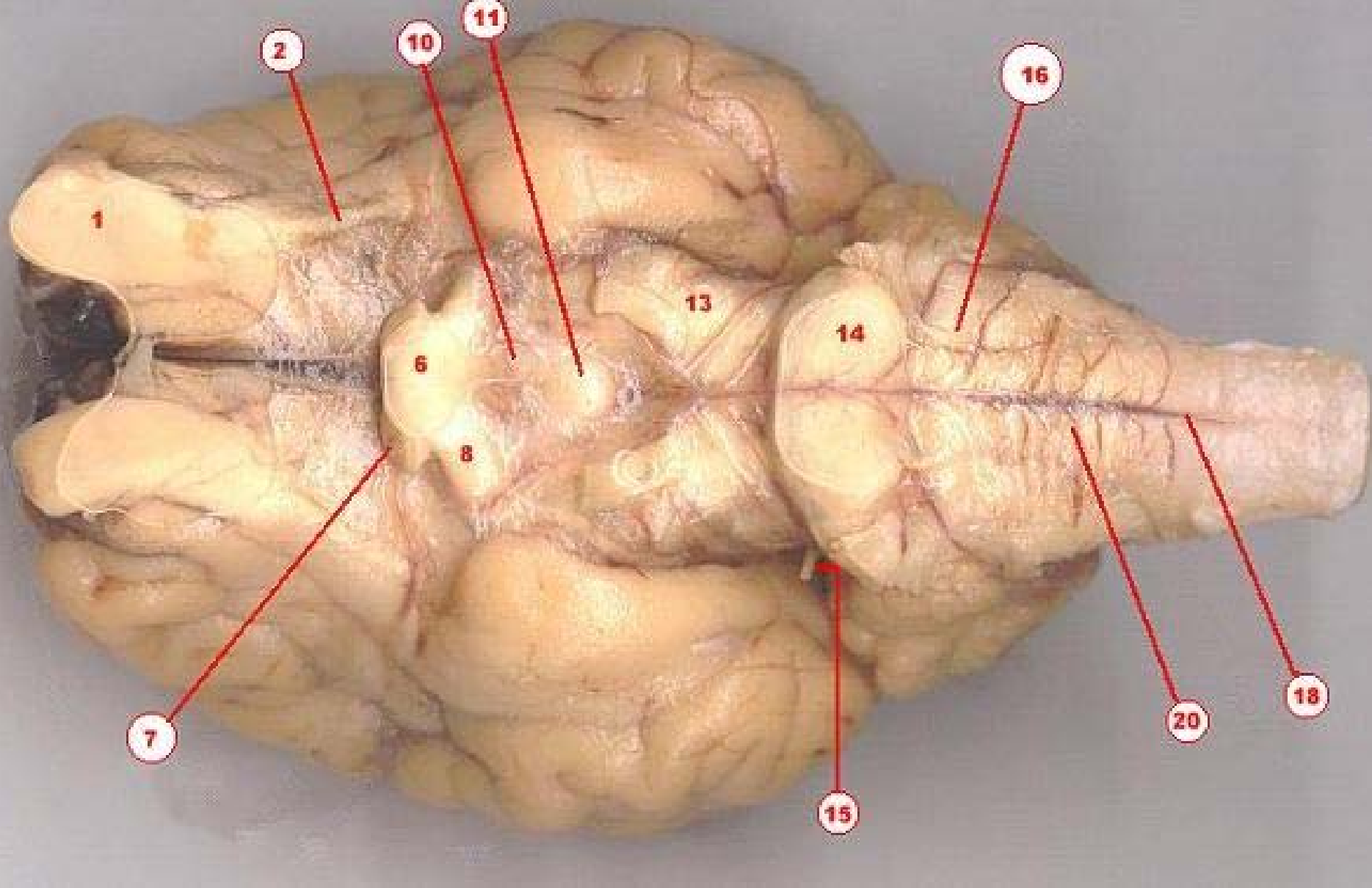
1  
frontal  
lobe

2  
sulcus

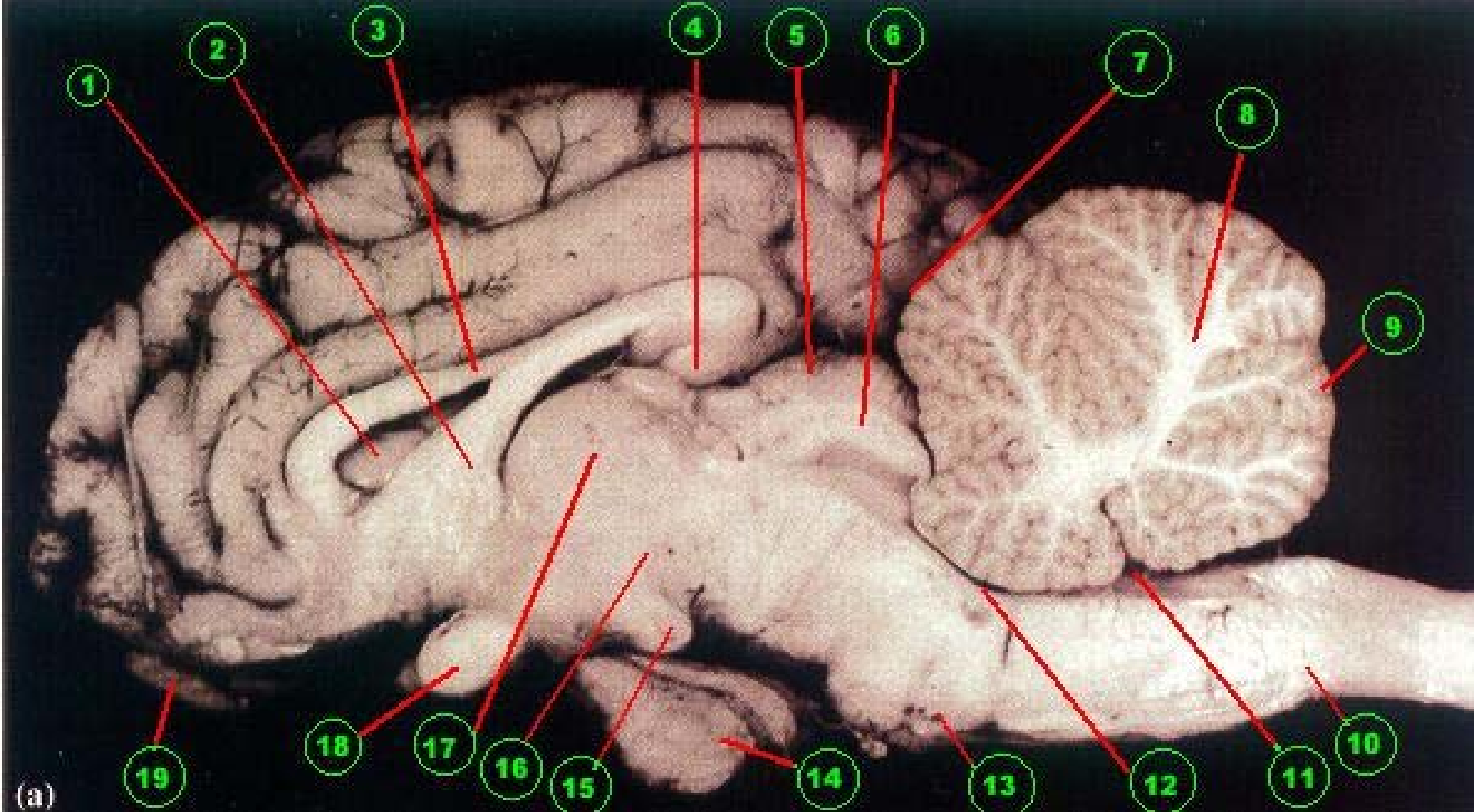
7



1. Cerebral Hemispheres
2. Longitudinal Cerebral Fissure
3. Cerebral Gyrus
4. Cerebral Sulcus
5. Vermis of Cerebellum
6. Cerebellum
7. Spinal Cord

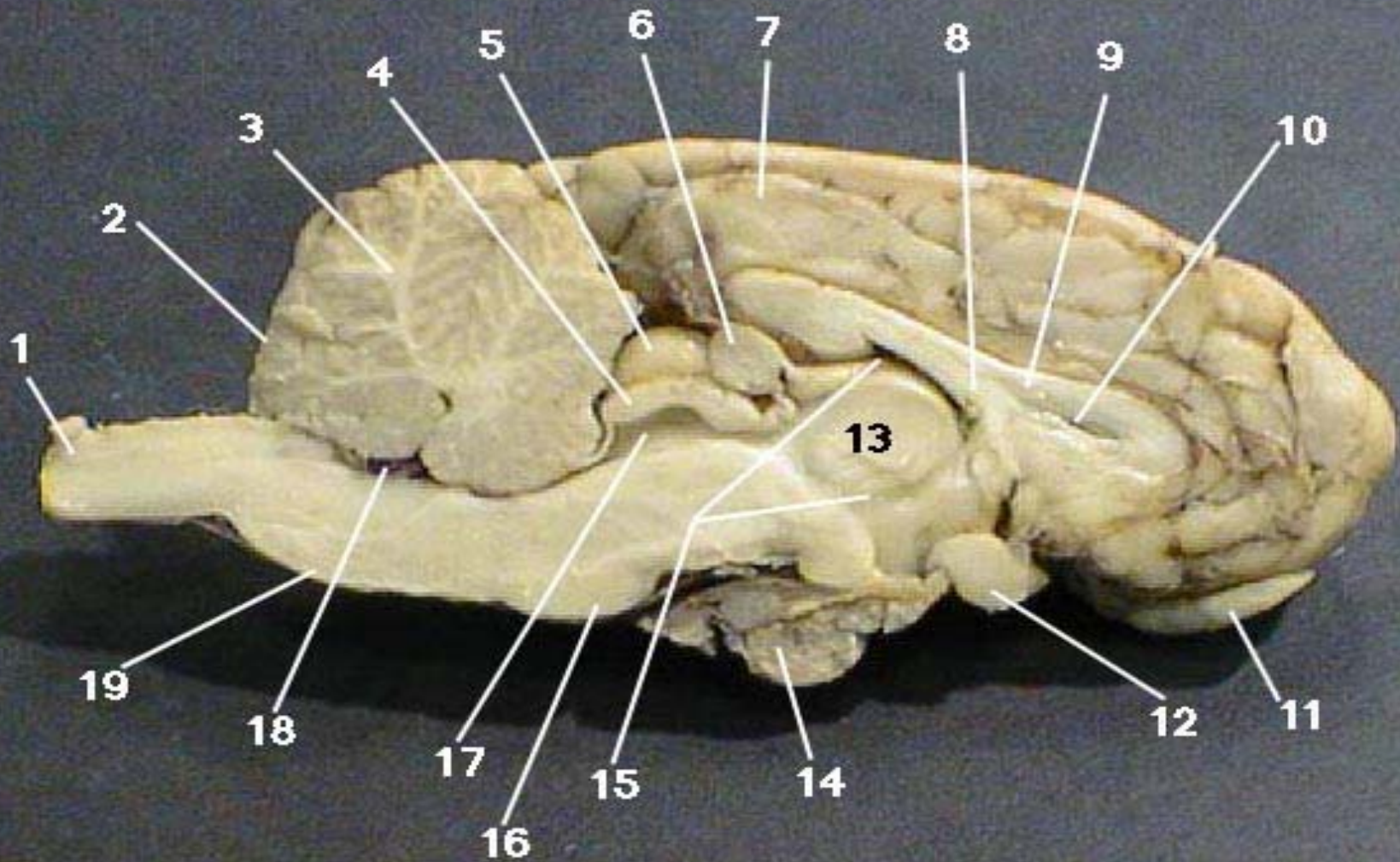


1. olfactory bulb 11. mammillary body 2. olfactory tract 13. trigeminal nerve 6. optic chiasma 14. pons 7. optic nerve 15. trochlear nerve 8. optic tract 16. abducens nerve 10. opening where the infundibulum attaches 18. spinal cord . 20. medulla oblongata

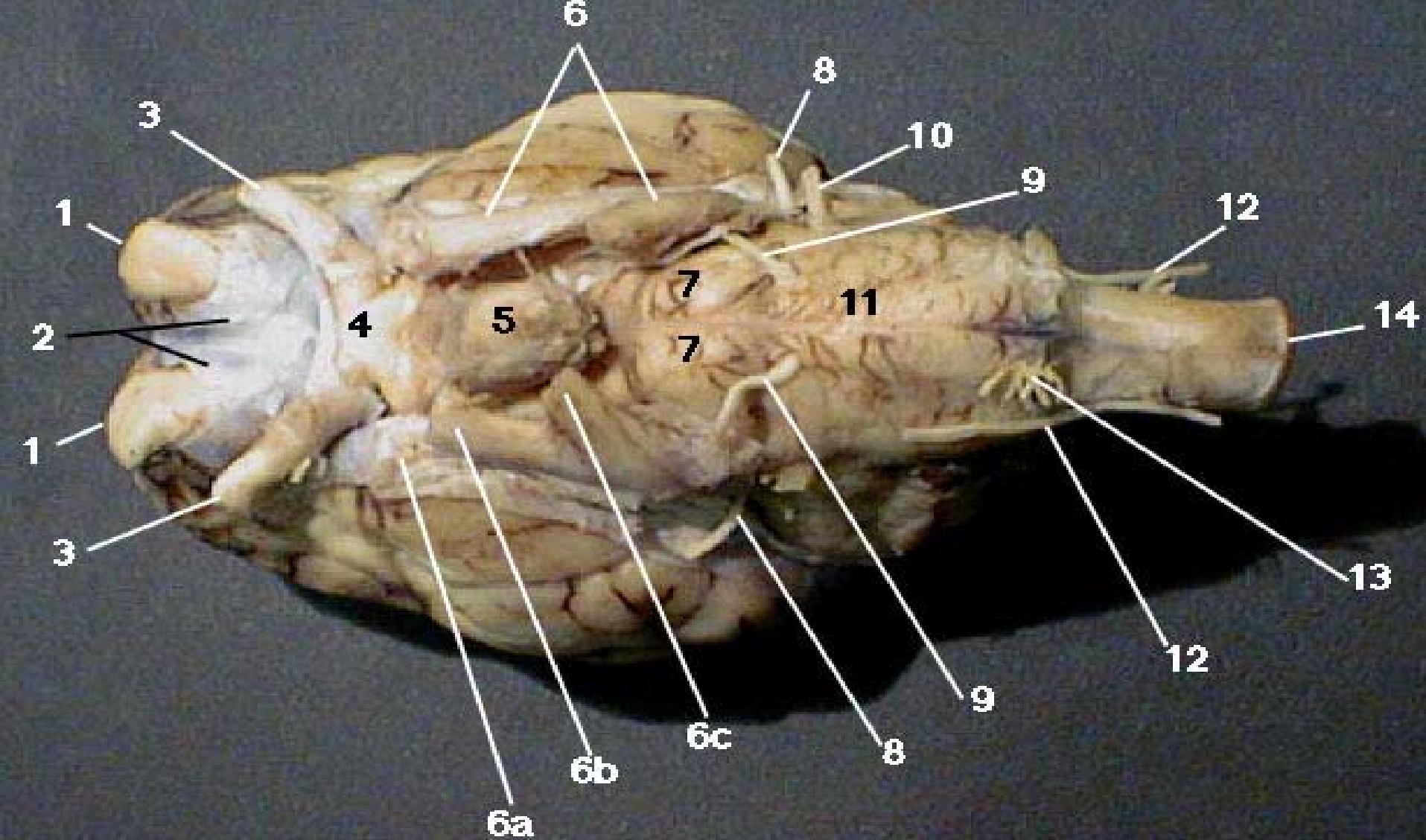


(a)

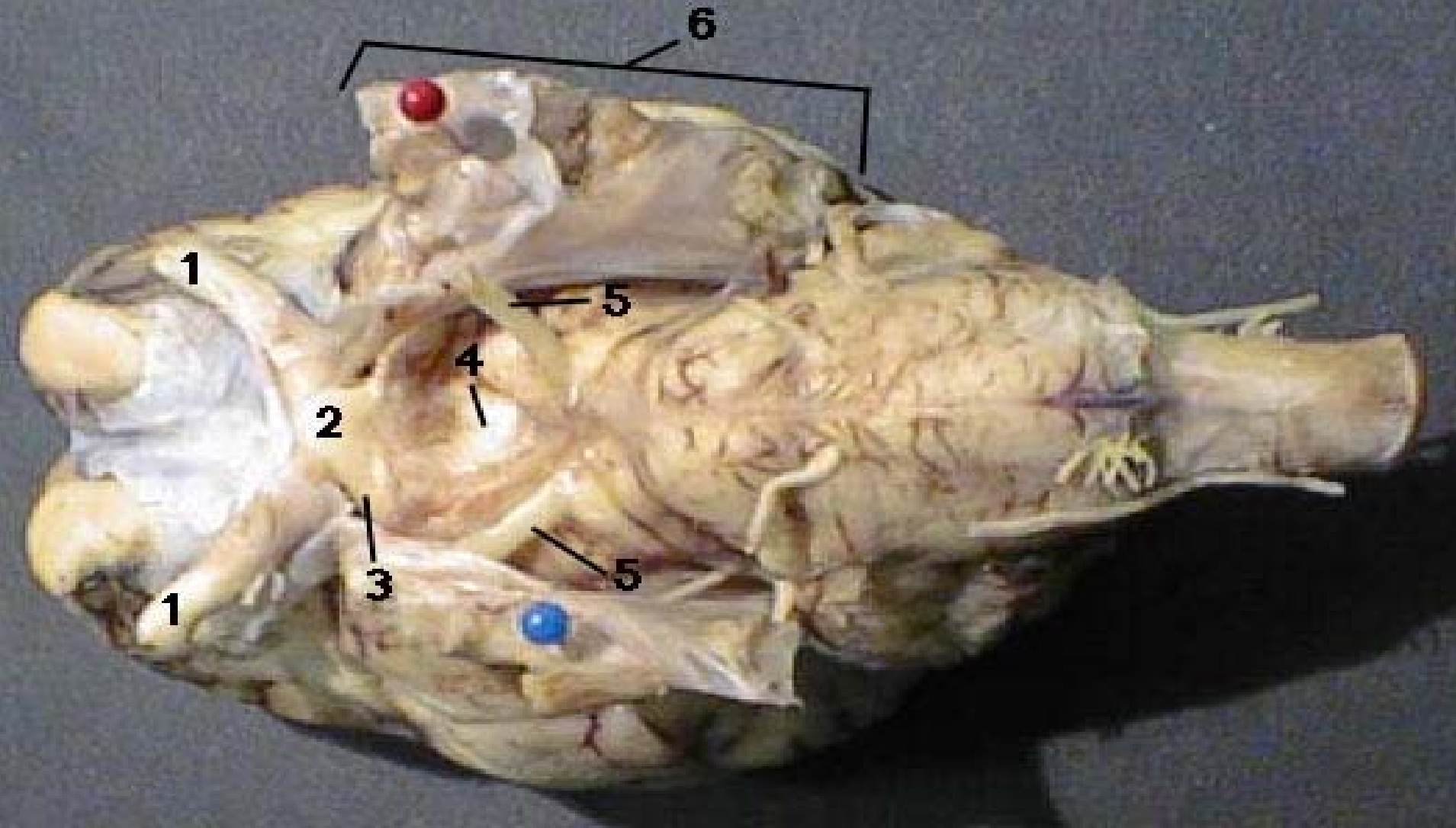
1. lateral ventricle 11. fourth ventricle 2. fornix 12. aqueduct 3. corpus callosum 13. pons  
4. pineal body 14. pituitary gland 5. superior colliculi 15. mammillary body 6. inferior  
colliculi 16. hypothalamus 7. transverse fissure 17. thalamus 8. arbor vitae 18. optic  
chiasma 9. cerebellar cortex (grey matter) 19. olfactory bulb 10. medulla oblongata .



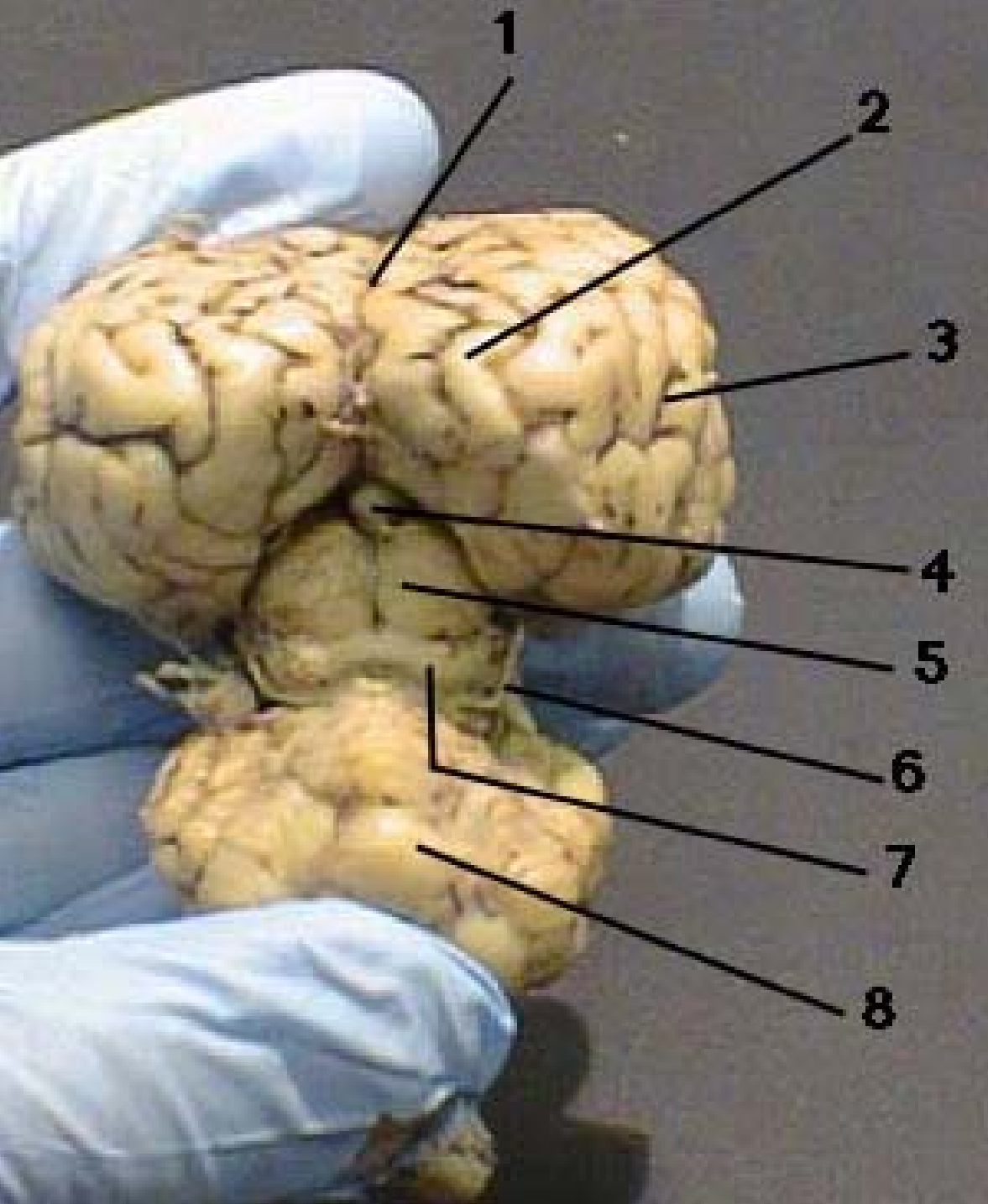
1. Spinal Cord 11. Olfactory Bulb 2. Cerebellum 12. Optic Chiasm 3. Arbor Vitae 13. Intermediate Mass (Thalamus) 4. Inferior Colliculus 14. Pituitary Gland 5. Superior Colliculus 15. Third Ventricle 6. Pineal Gland 16. Pons 7. Cerebrum 17. Cerebral Aqueduct of Sylvius 8. Fornix 18. Fourth Ventricle 9. Corpus Callosum 19. Medulla Oblongata 10. Lateral Ventricle



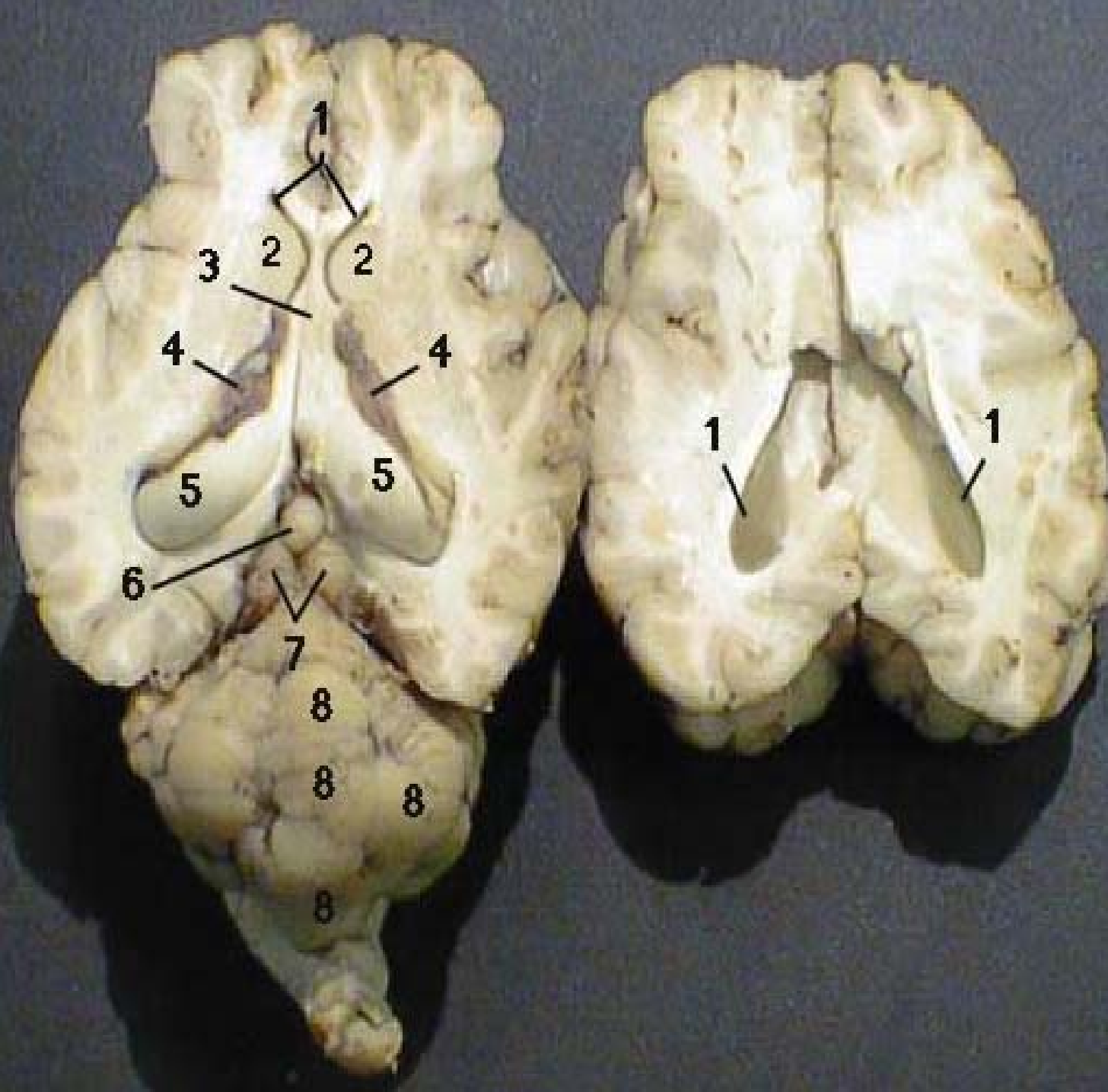
1. Olfactory Bulbs (I) 7. Pons 2. Dura Mater 8. Trochlear Nerve (IV) 3. Optic Nerve (II) 9. Abducens Nerve (VI) 4. Optic Chiasm 10. Facial Nerve (VII) 5. Pituitary Gland (Hypophysis) 11. Medulla Oblongata 6a. Trigeminal Nerve (V) - Ophthalmic Branch (V) 12. Spinal Accessory Nerve (XI) 6b. Trigeminal Nerve (V) - Maxillary Branch (V) 13. Hypoglossal Nerve (XII) 6c. Trigeminal Nerve (V) - Mandibular Branch (V) 14. Spinal Cord



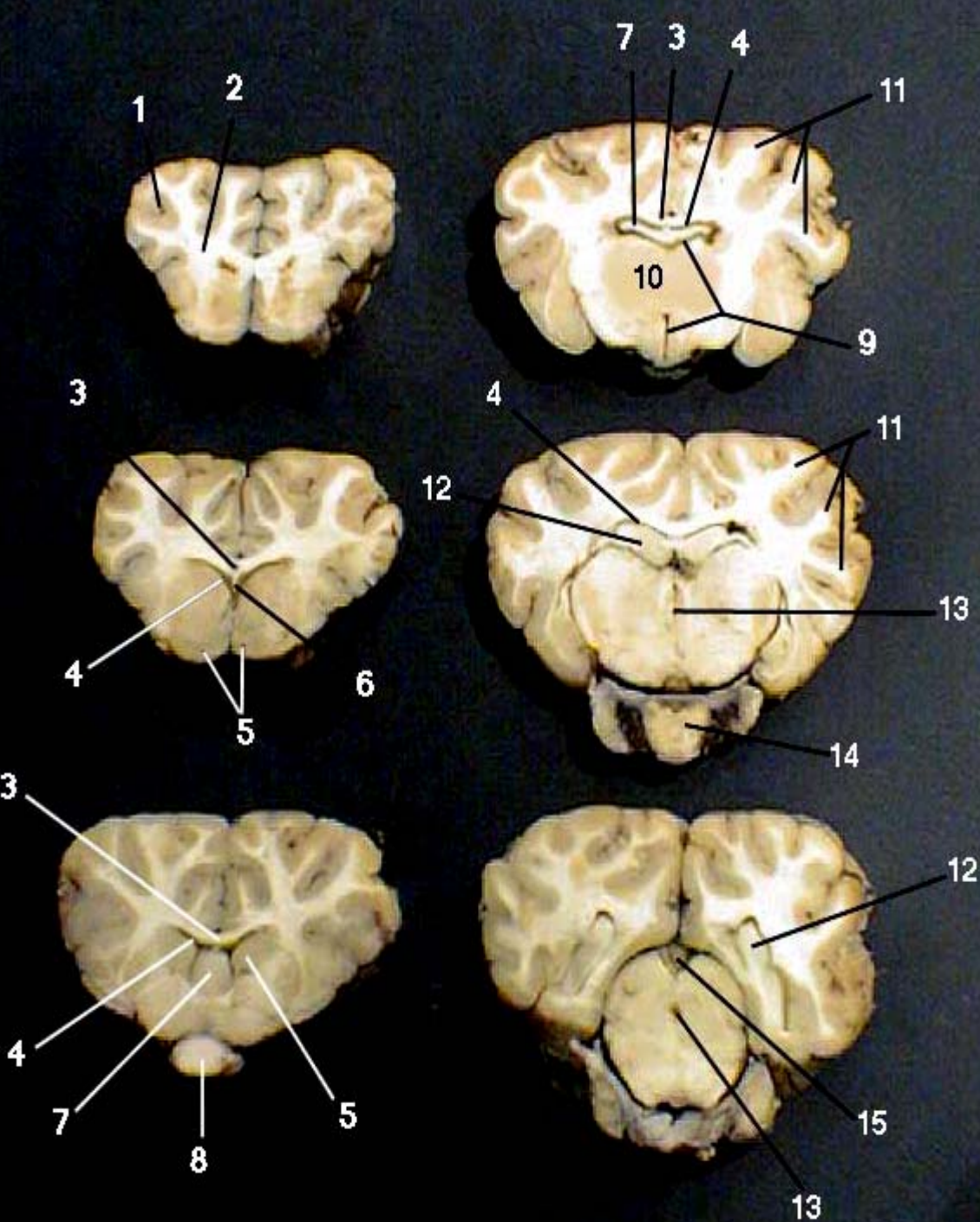
1. Optic Nerve (II) 2. Optic Chiasm 3. Optic Tract 4. Mammillary Body  
5. Occulomotor Nerve (III) 6. Reflected Pituitary Gland & Trigeminal Nerve (V)



- 1. Longitudinal Cerebral Fissure
- 2. Cerebral Gyrus
- 3. Cerebral Sulcus
- 4. Pineal Gland
- 5. Superior Colliculus
- 6. Trochlear Nerve (IV)
- 7. Inferior Colliculus
- 8. Cerebellum



1. Lateral Ventricles
2. Caudate Nuclei
3. Fornix
4. Choroid Plexus
5. Hippocampus
6. Pineal Gland
7. Superior Colliculi
8. Vermis of Cerebellum



1. Gray Matter 9. Third Ventricle 2. White Matter 10. Thalamus 3. Corpus Callosum 11. Corona Radiata 4. Lateral Ventricle 12. Hippocampus 5. Caudate Nucleus 13. Cerebral Aqueduct 6. Septum Pellucidum 14. Pituitary Gland 7. Fornix 15. Pineal Gland 8. Optic Chiasm

