

Review of the Cardiovascular System: The heart.

By Ellie & Lucy

- ◆ Explain how one can get heart attack?

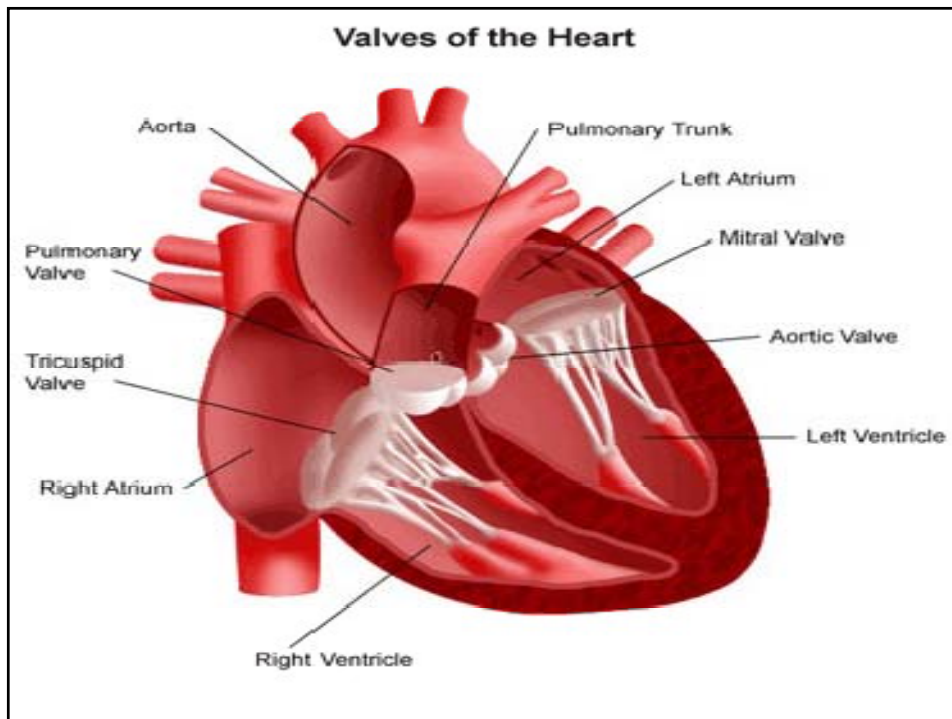
- ◆ When The region of the heart deprived of blood (Is ischemic), it cause the gap junction to close. This can lead to heart attack when the ischemic area is large and interfere with the pumping activity of the heart.

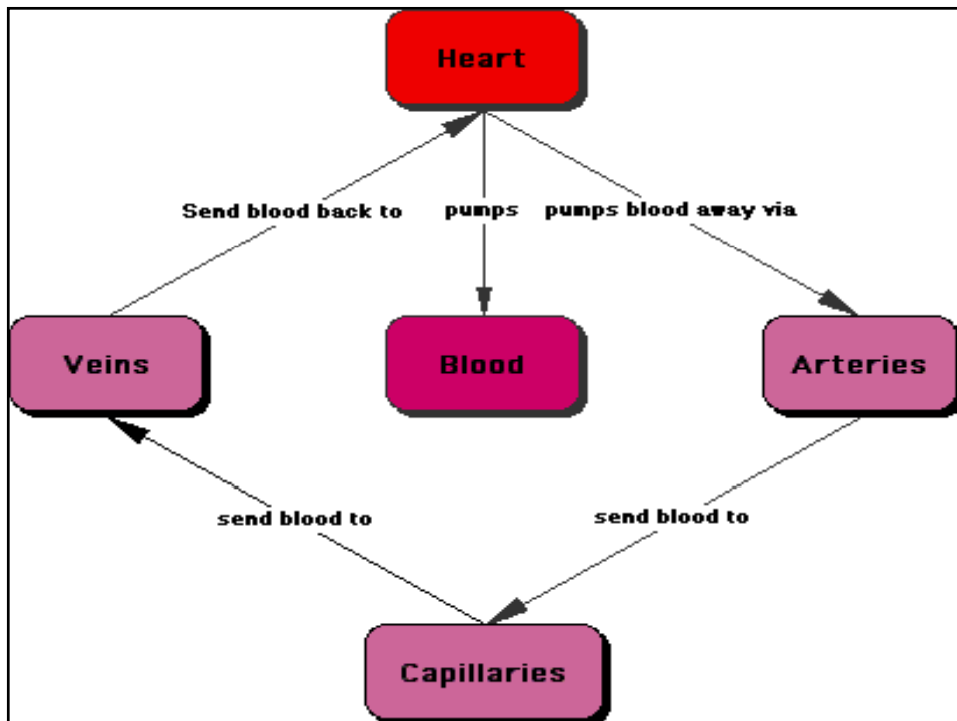
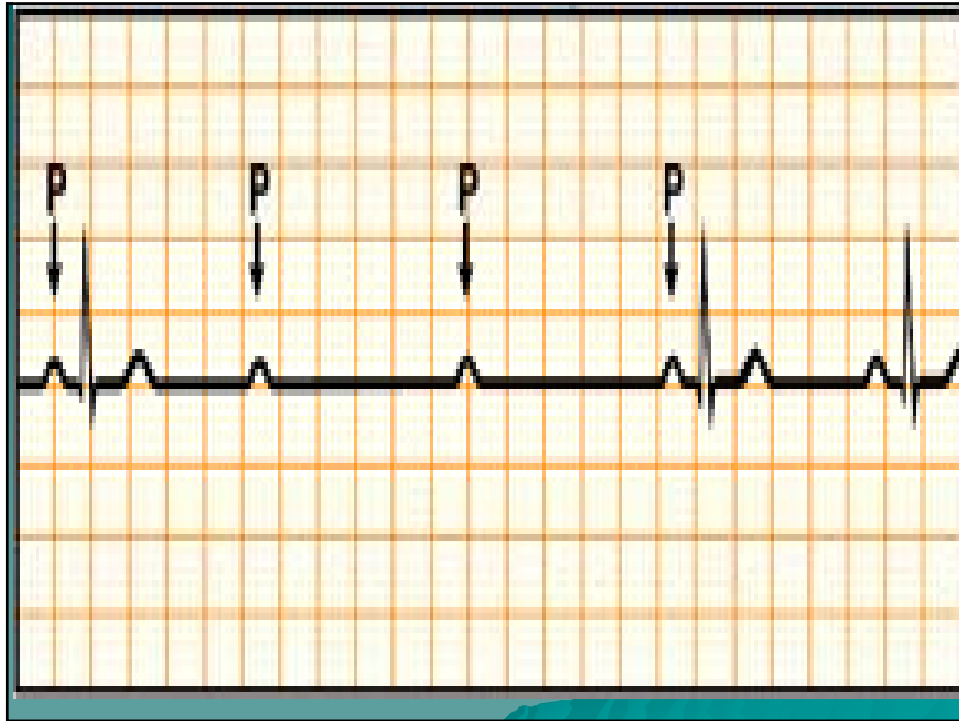
- ◆ What are the sequence of excitation of the heart (The intrinsic conduction system)

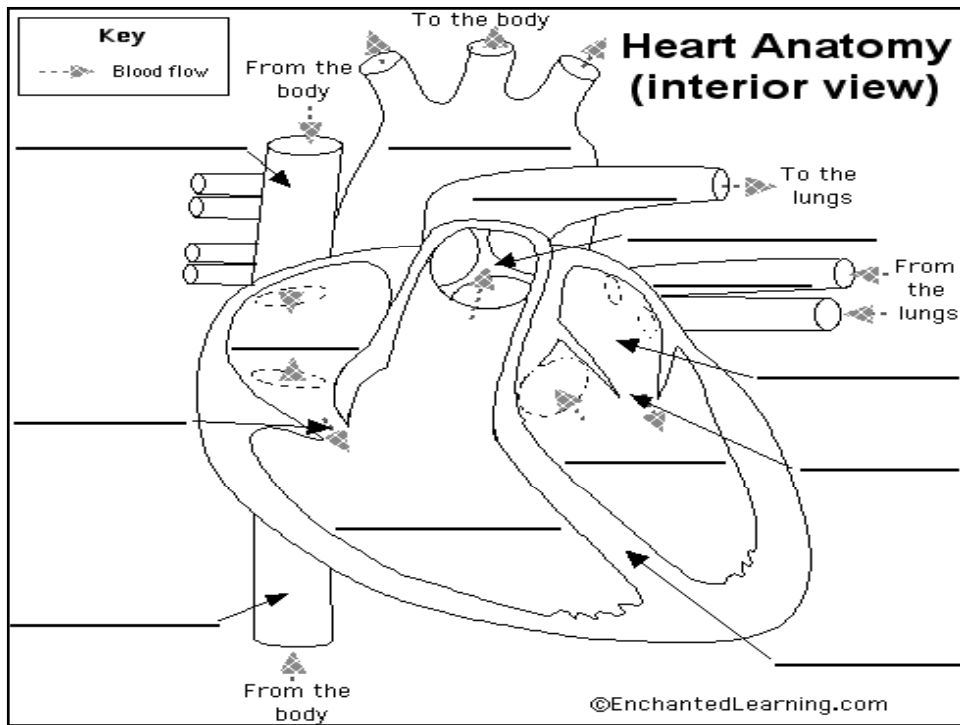
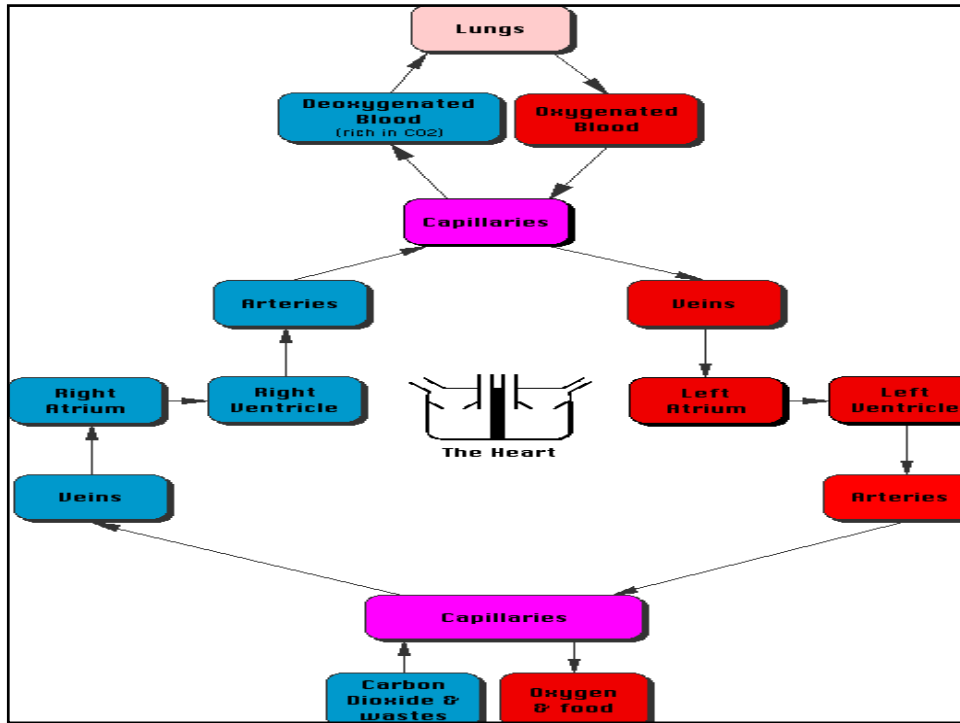
- ◆ sinoatrial node
- ◆ Atrioventricular node
- ◆ Atrioventricular bundle
- ◆ Left and right bundle branches
- ◆ Purkinje fibers

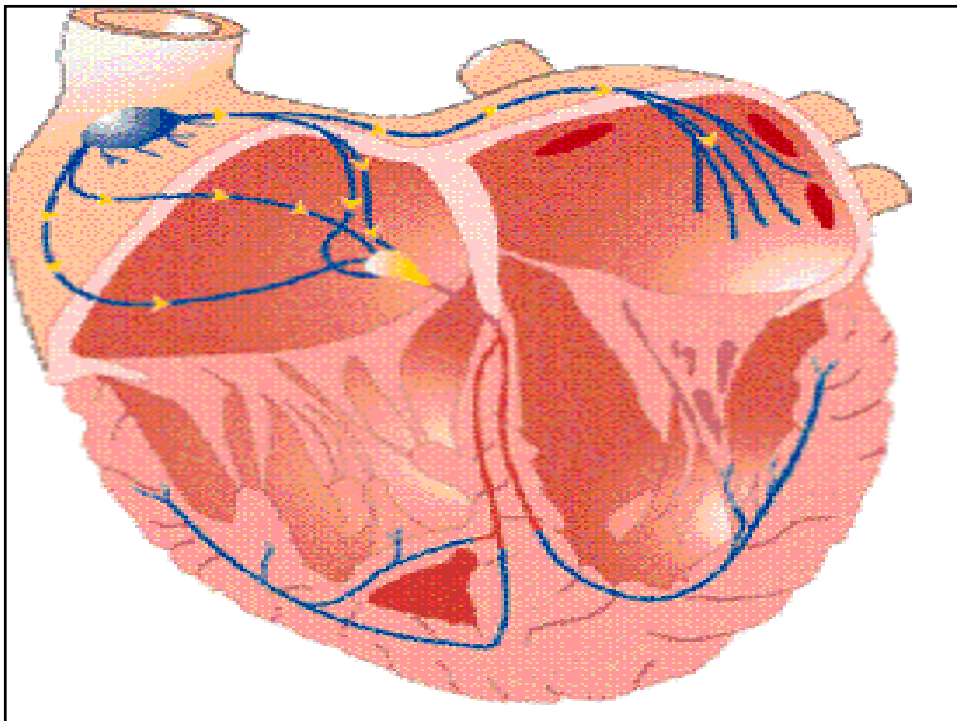
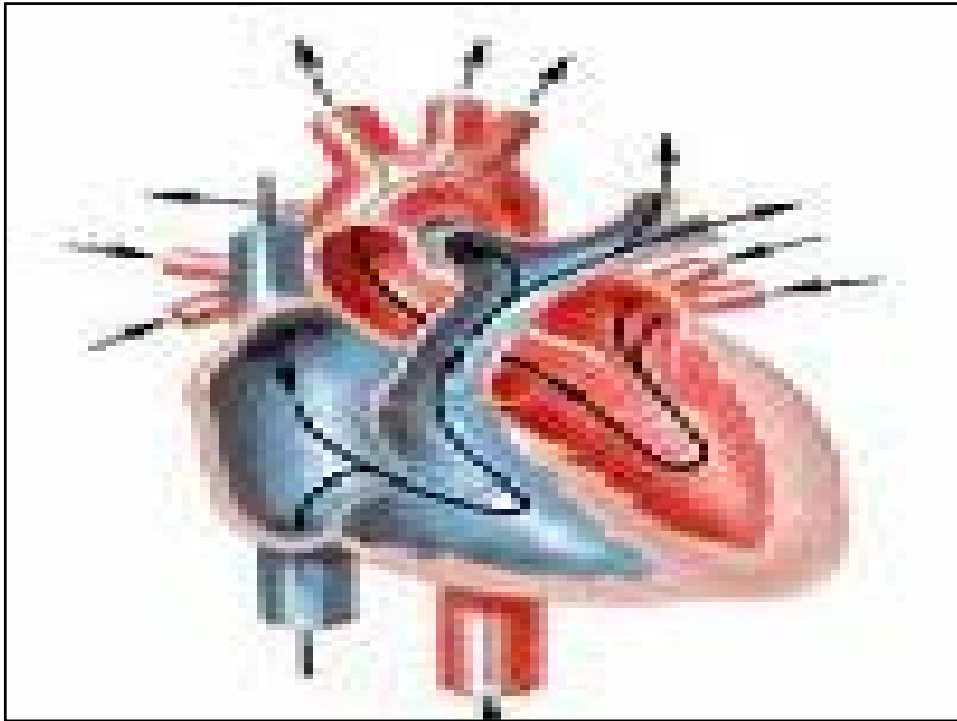
- ◆ What are the hormone that lower the blood pressure?
- ◆ And how?

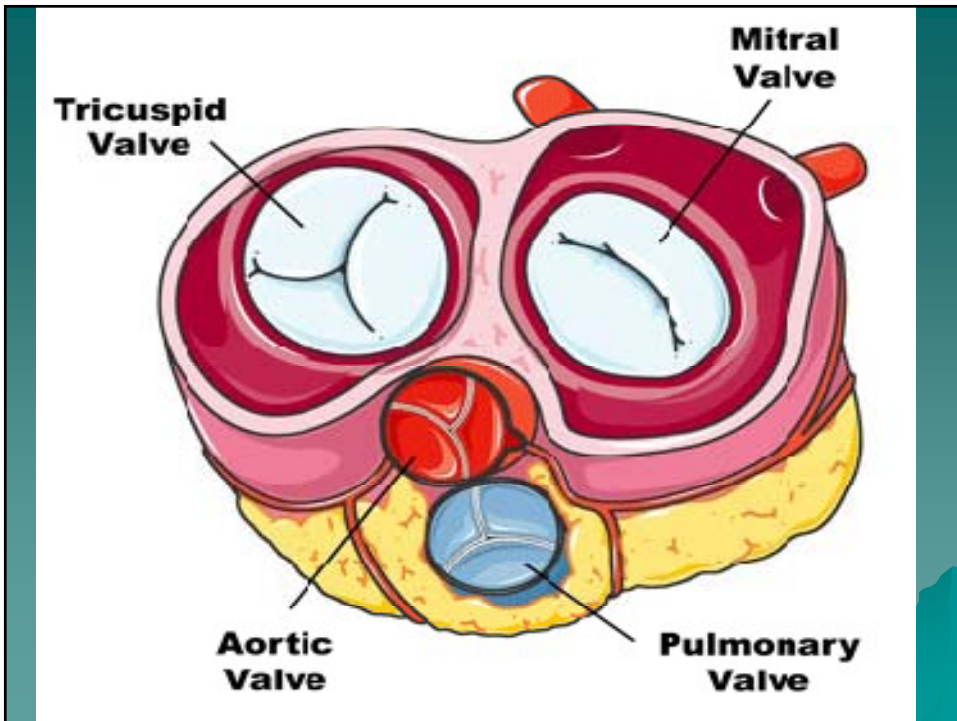
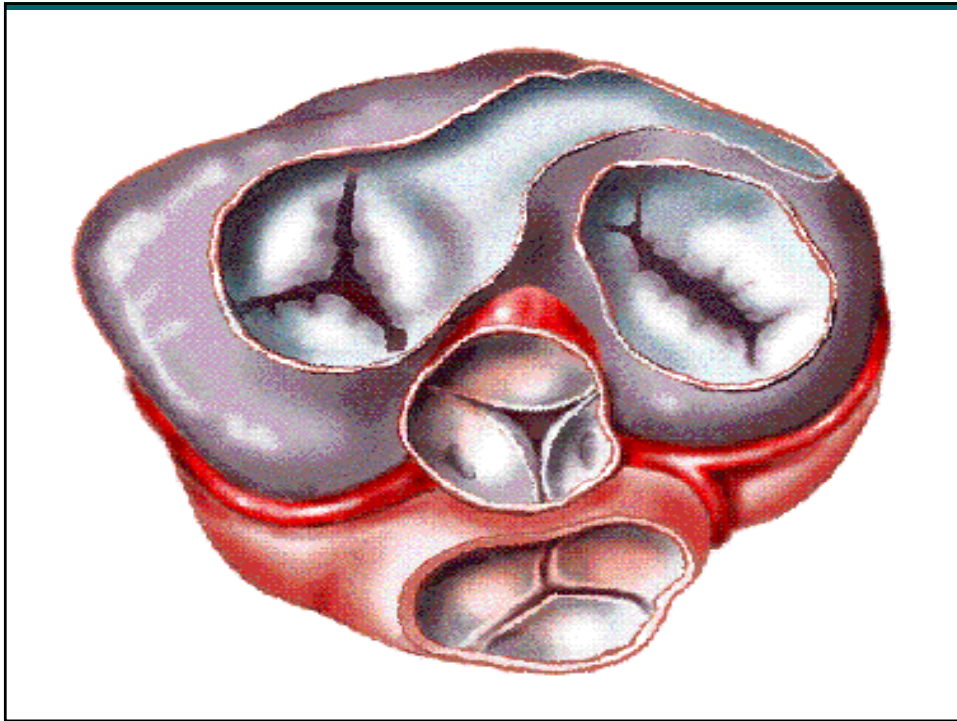
- ◆ A-nutriuretic peptid
- ◆ B-nutriuretic peptid
- ◆ By
- ◆ Relaxing arteries
- ◆ Inhibiting the secretion of renin and aldostero
- ◆ Inhibiting the reabsorption of sodium ions by kidneys.













- ◆ *Draw a picture of what an ECG would look like from a person with first degree heart block.*

