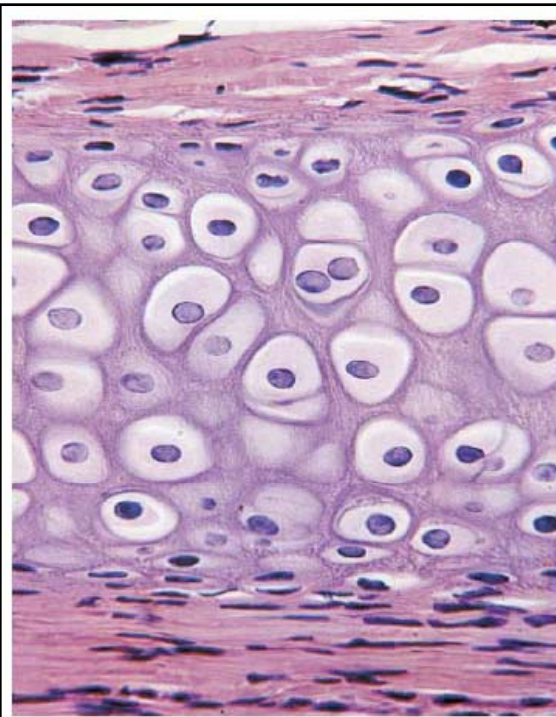


Lecture bone pictures exam

dh



What type of tissue is this?

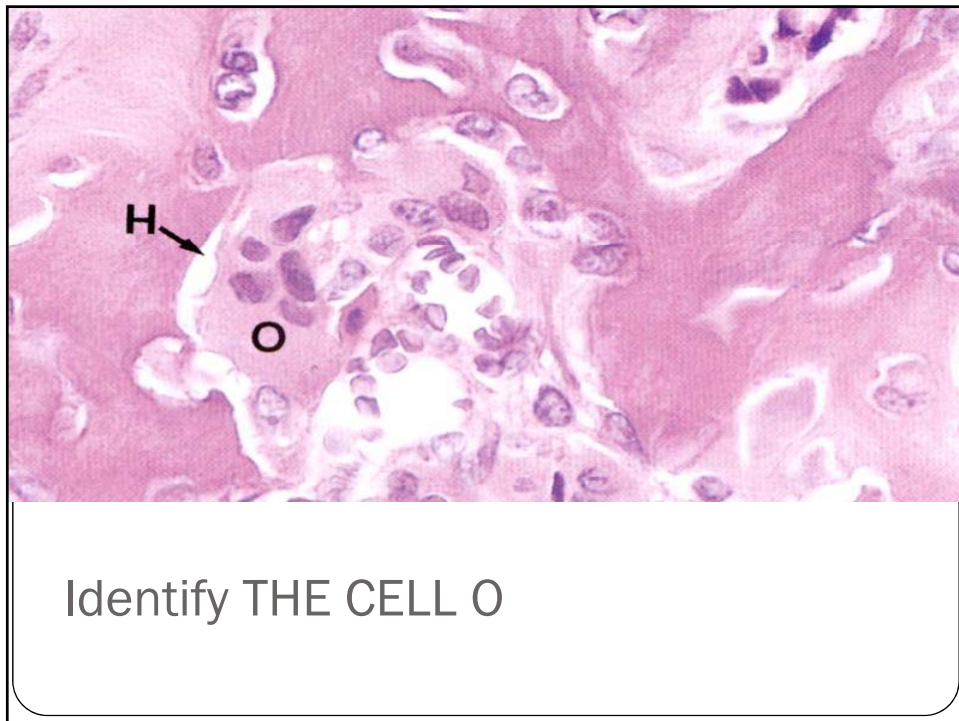
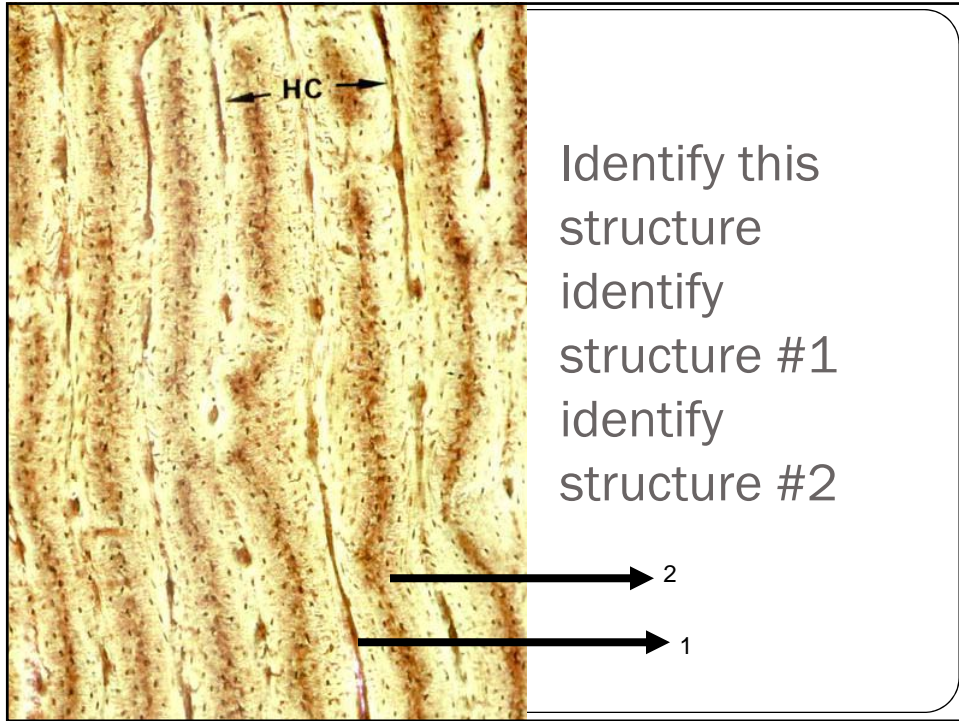
Hyaline Cartilage

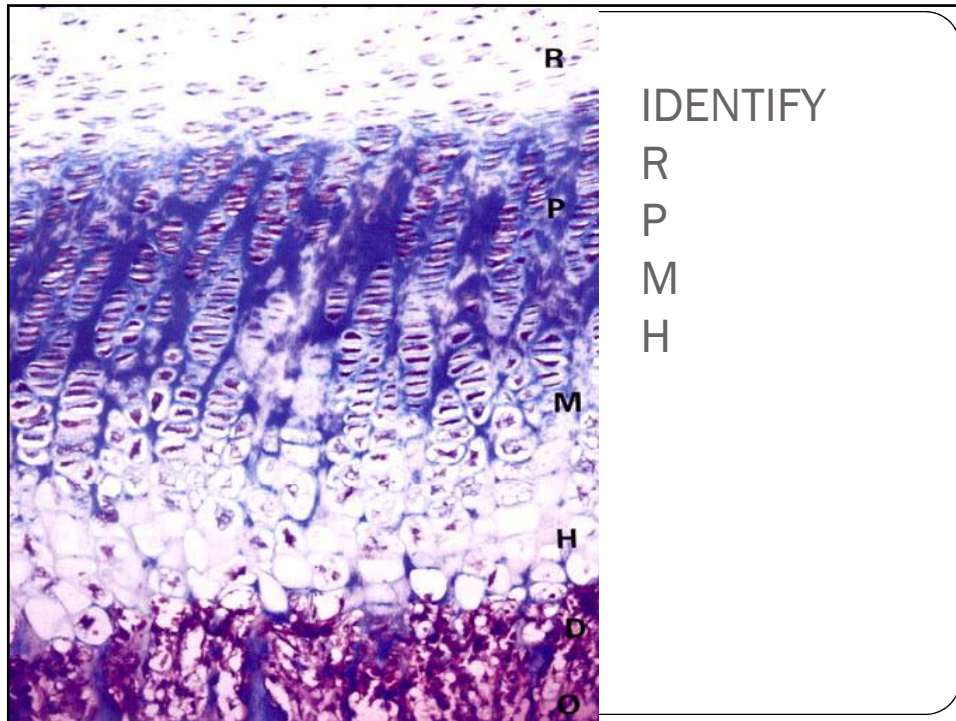
• What cells are in this type of tissue?

Chondroblast

• What organelle is particularly important in these cells?

Rough ER; for secreting proteins.





IDENTIFY

R
P
M
H

List two features that distinguish between the following. You may use structure, function, location or composition as points of comparison as long as they are unique for the structure or process.

b.) Intramembraneous ossification vs Endochondral ossification

c.) Woven bone vs Lamellar bone
 d.) Fibrocartilage cartilage vs Hyaline
 e.) Compact bone vs ancellous bone

