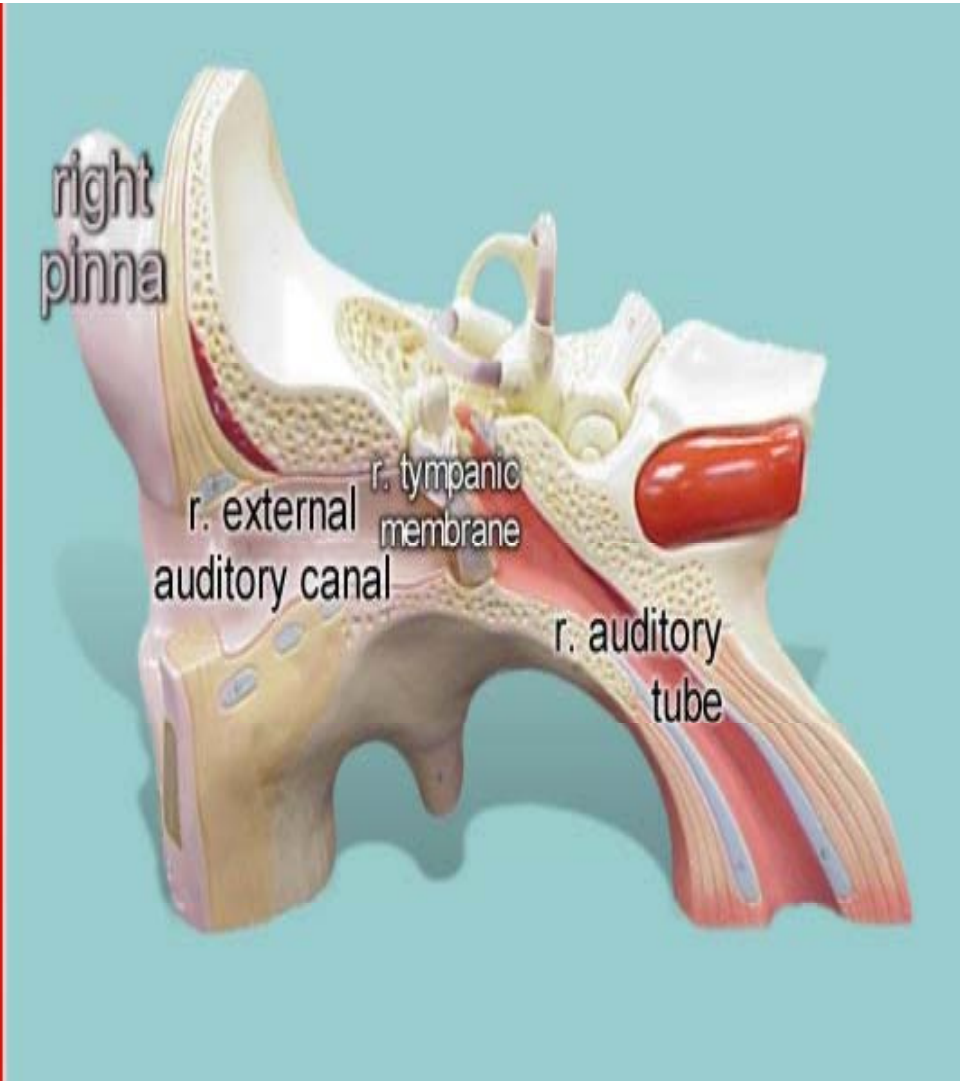
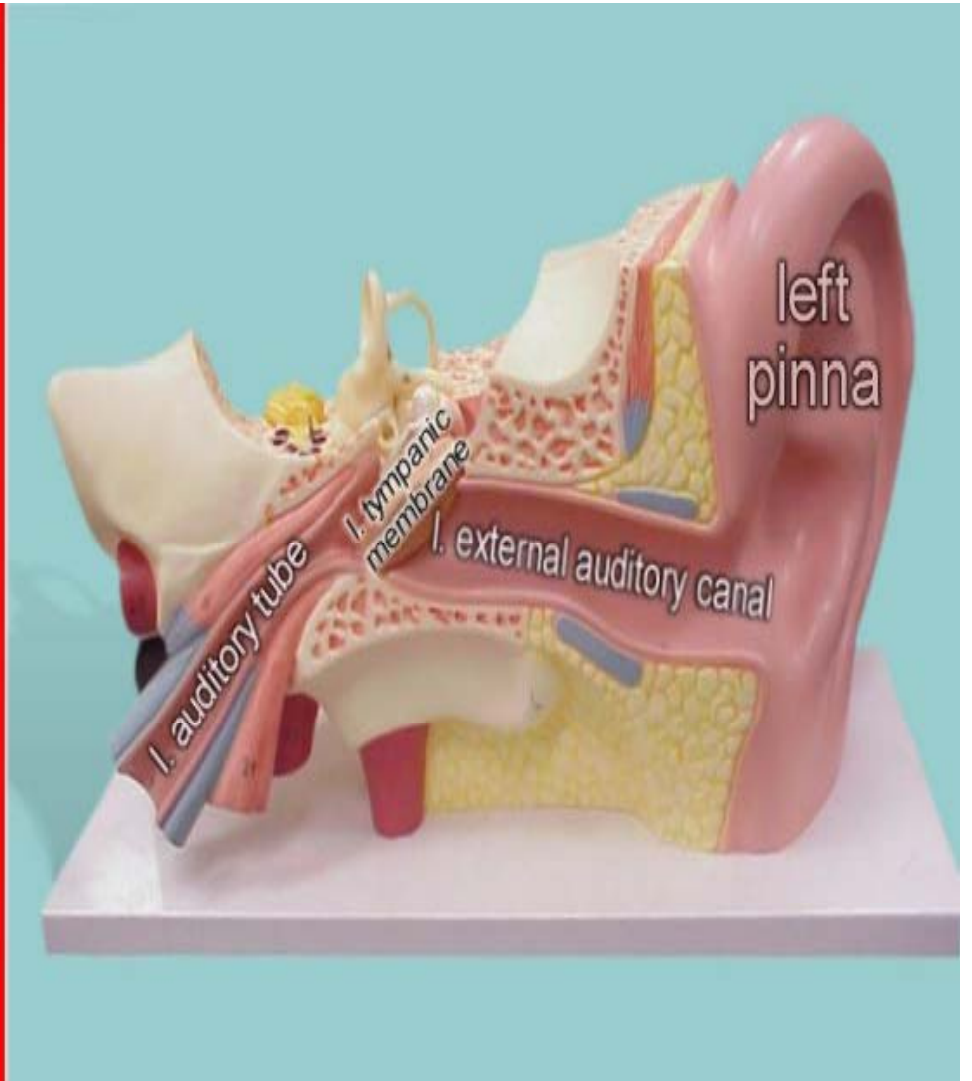
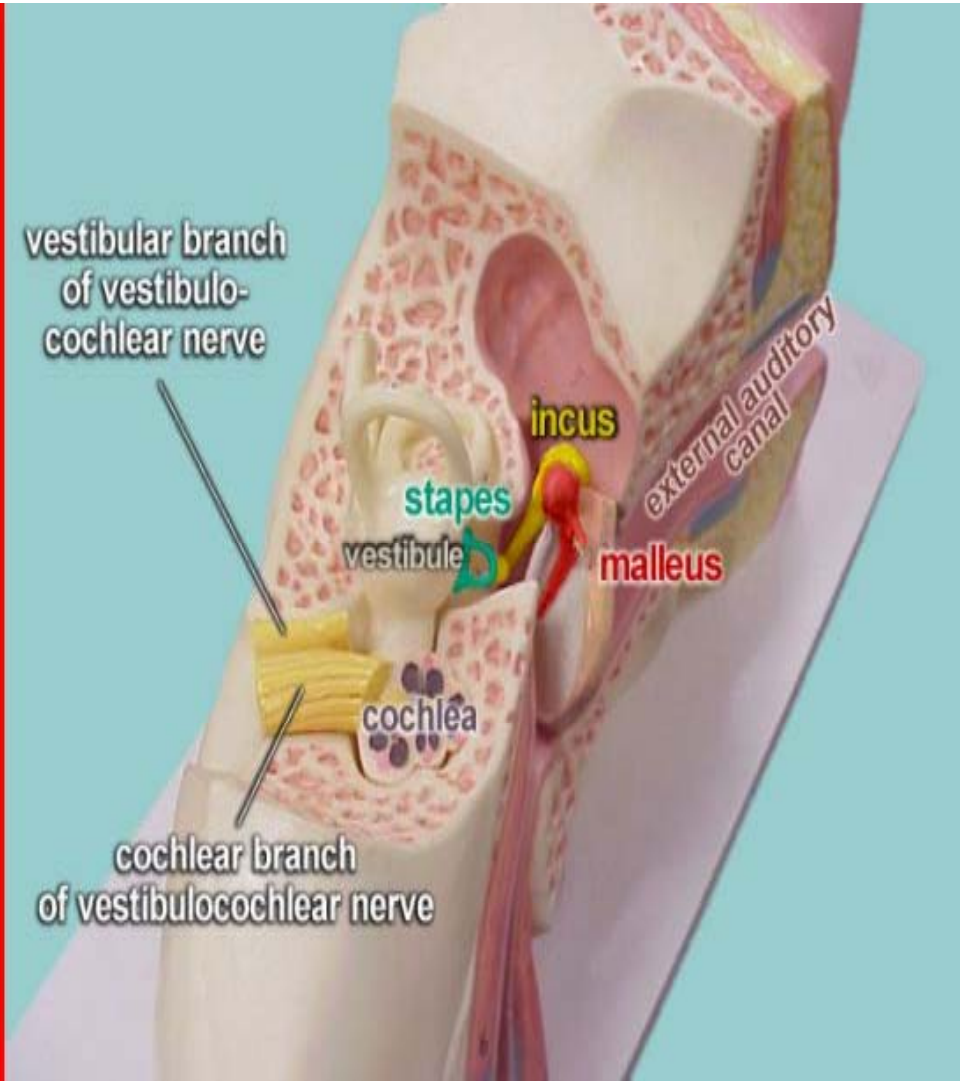


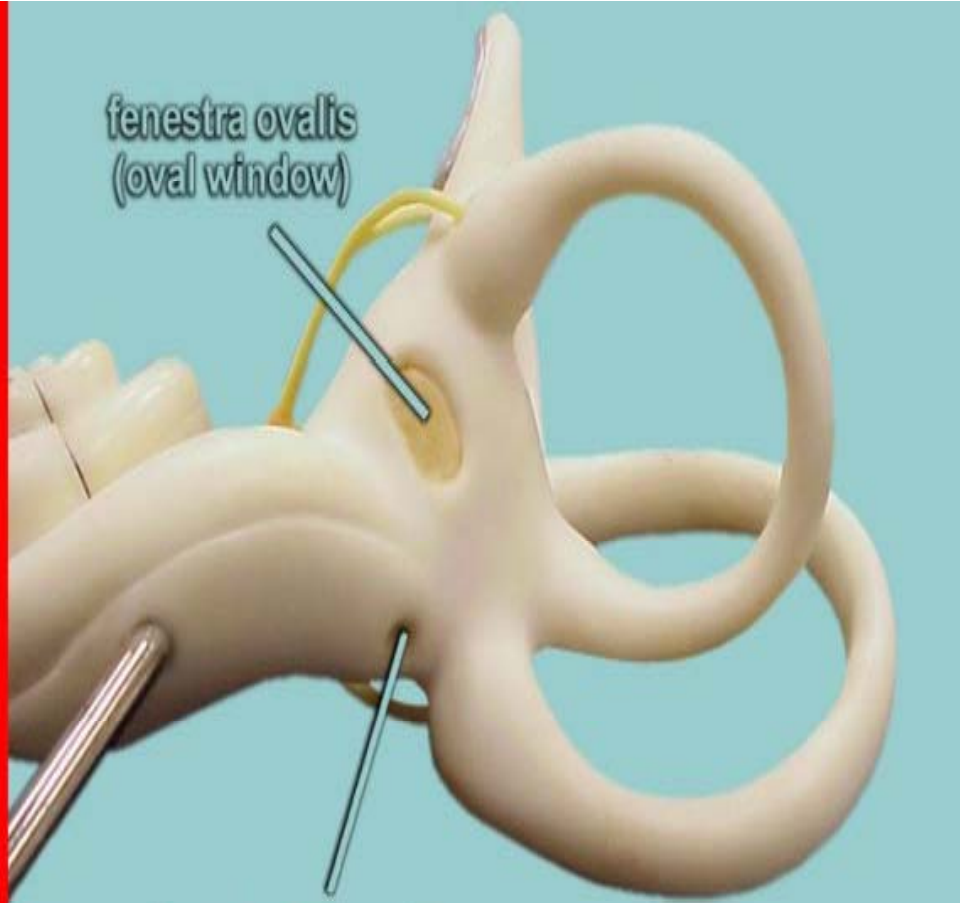
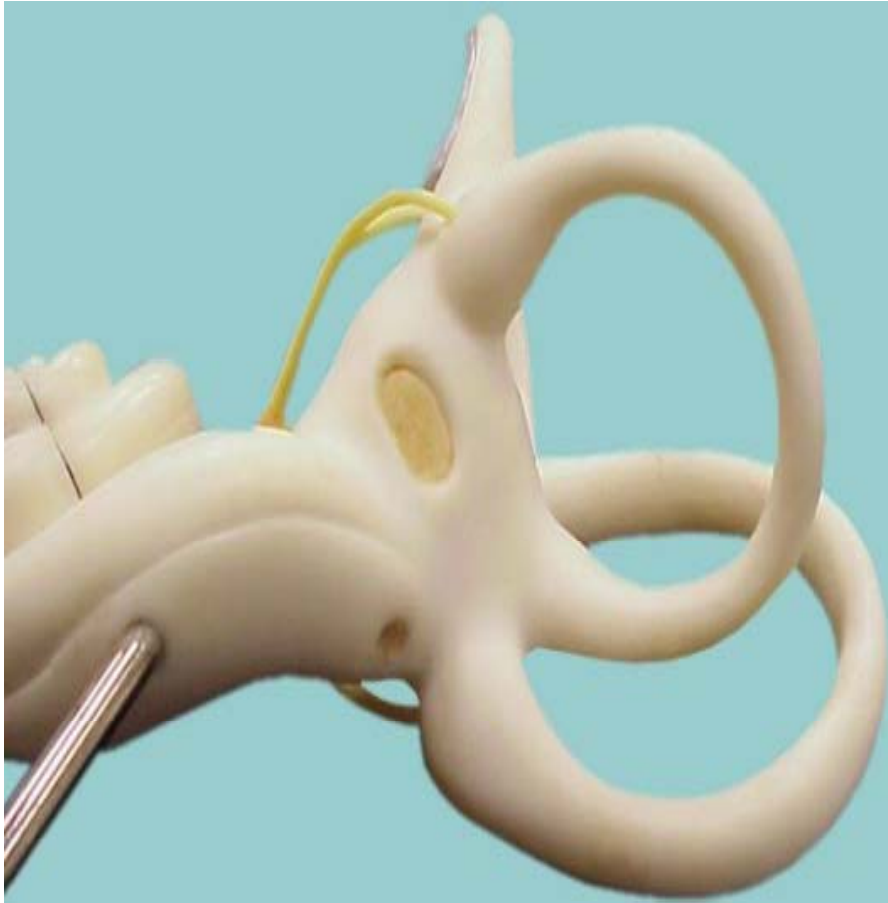
EARS

Danil Hammoudi.MD









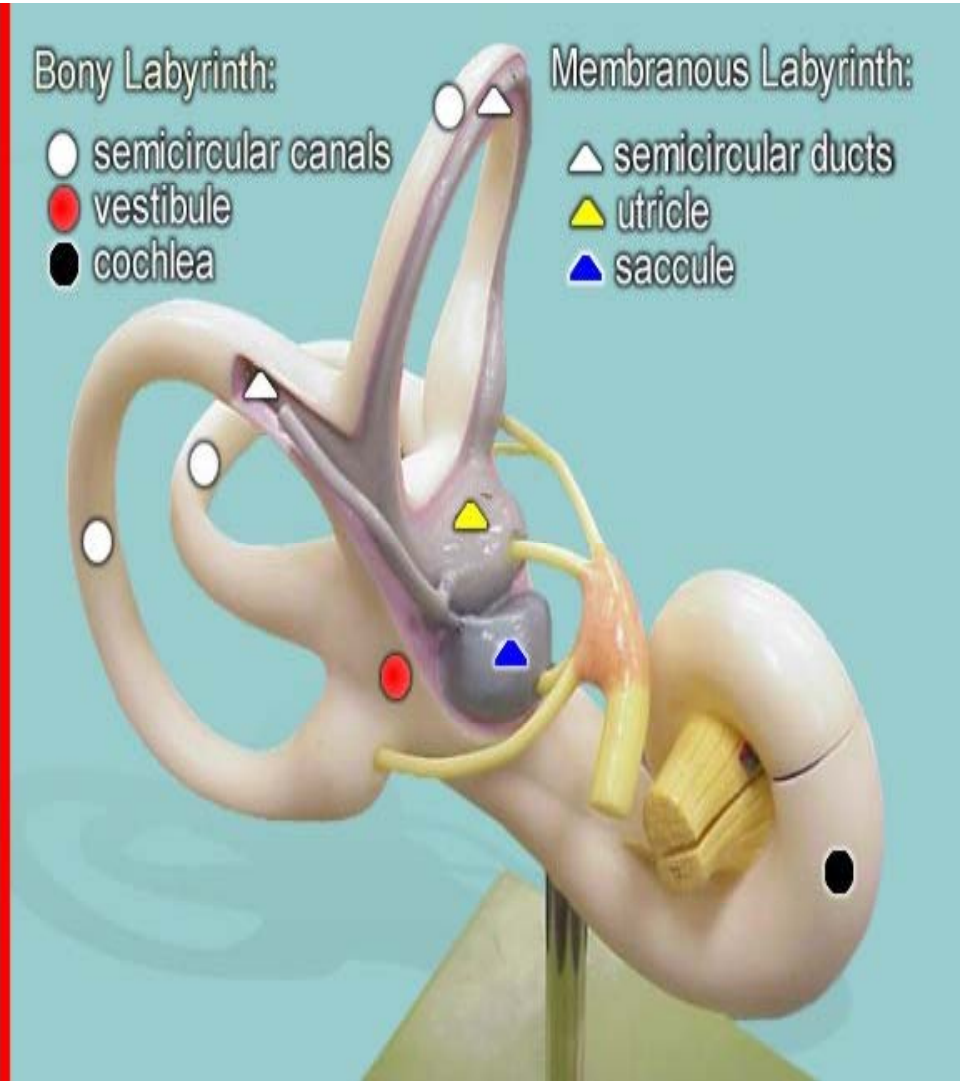
fenestra ovalis
(oval window)

fenestra rotunda
(round window)



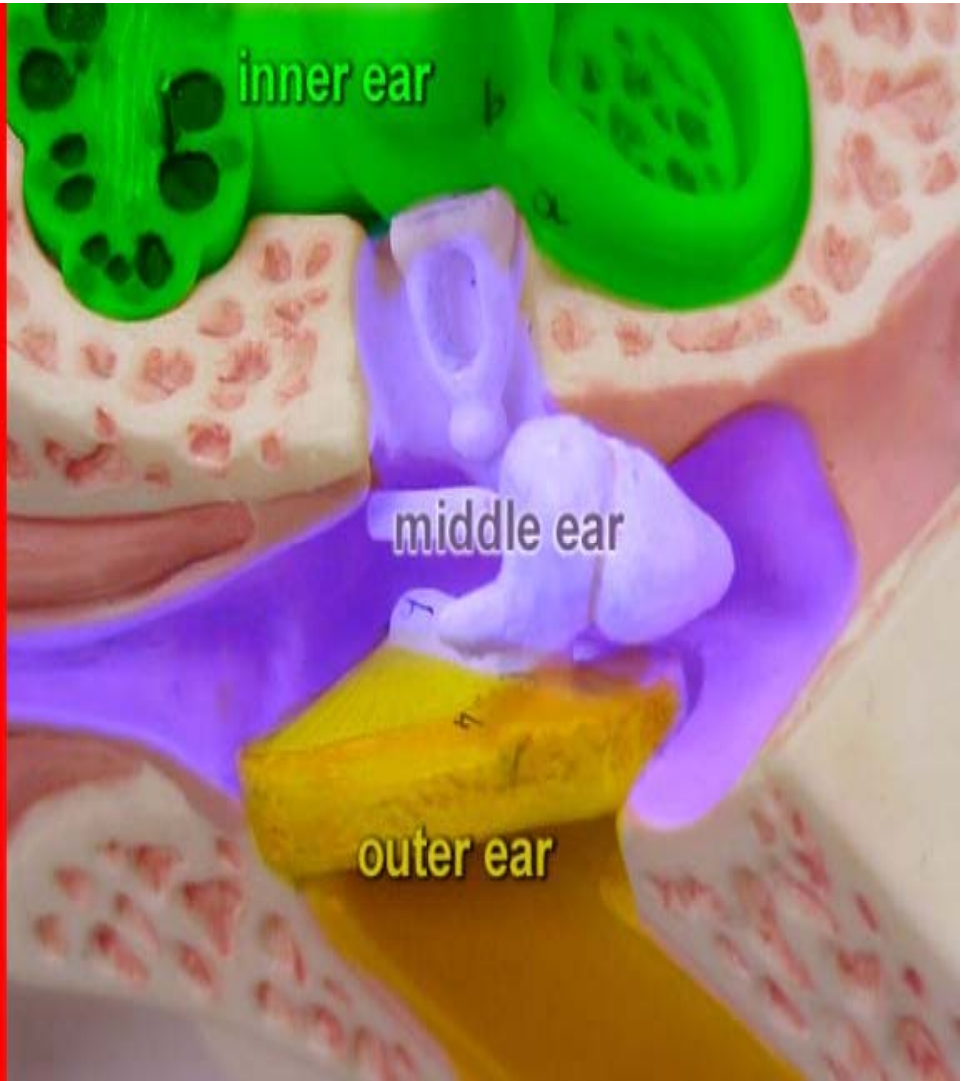
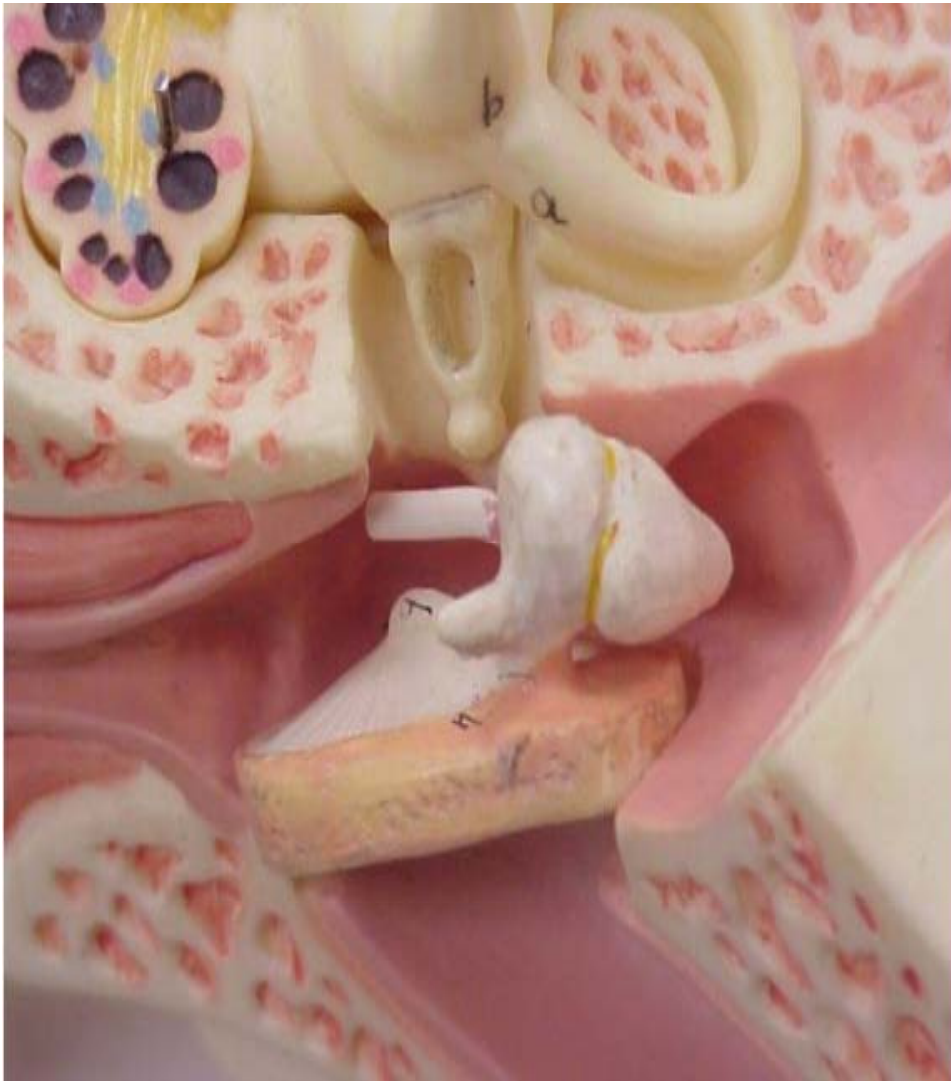
Bony Labyrinth:

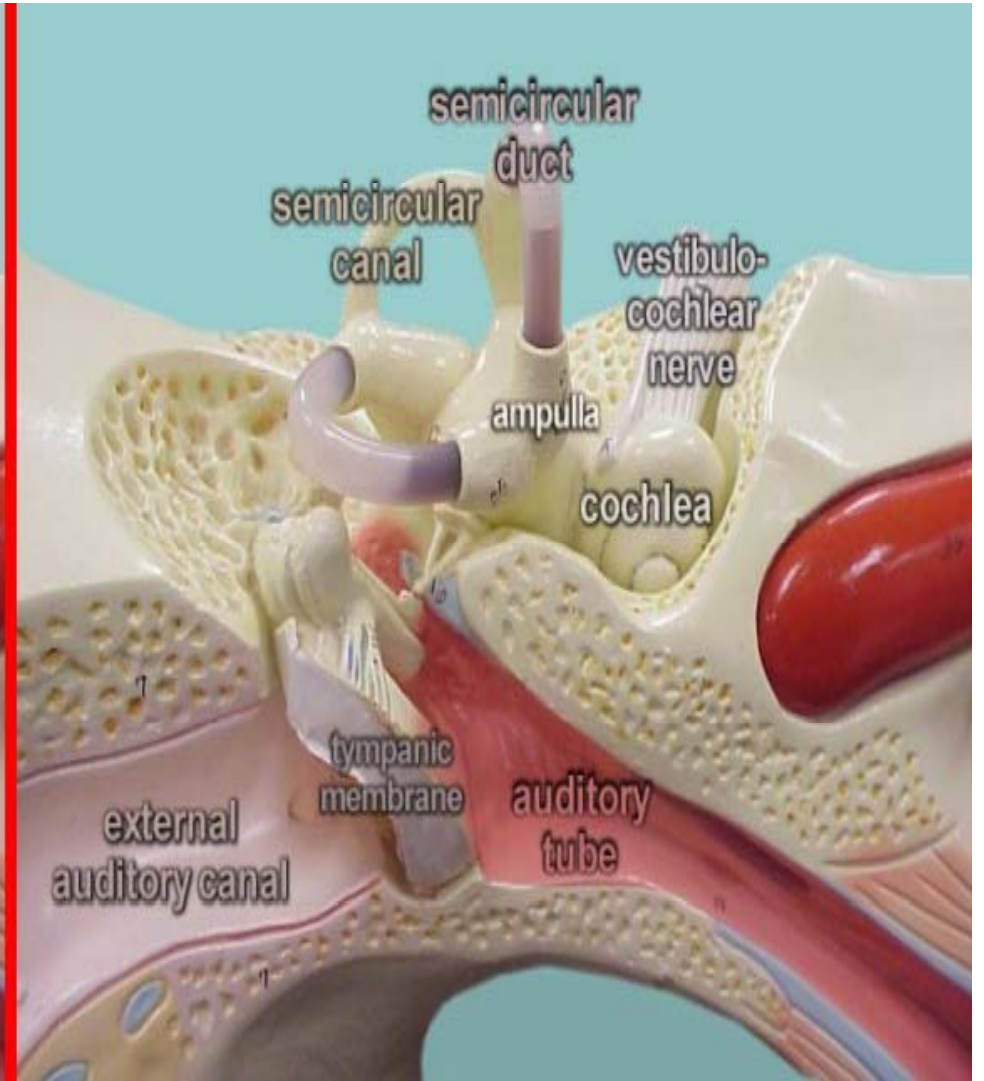
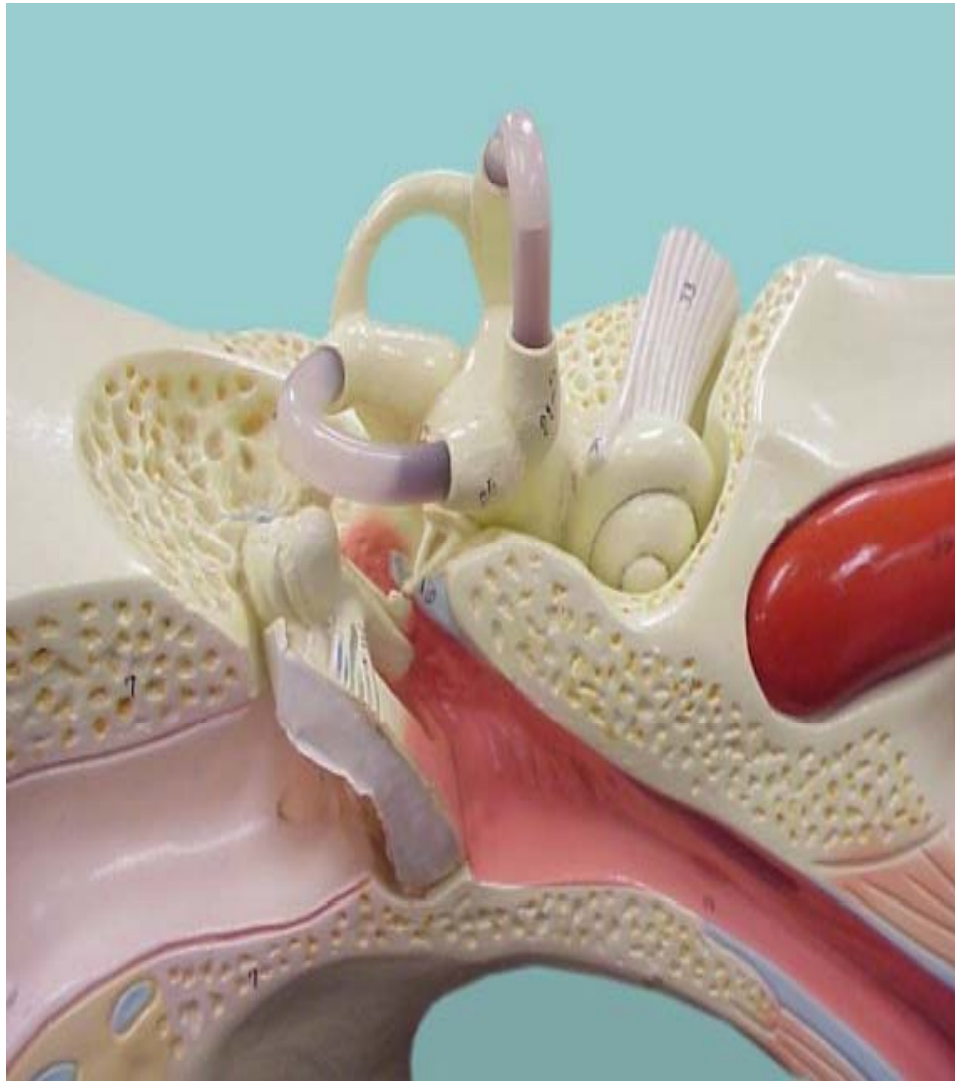
- semicircular canals
- vestibule
- cochlea

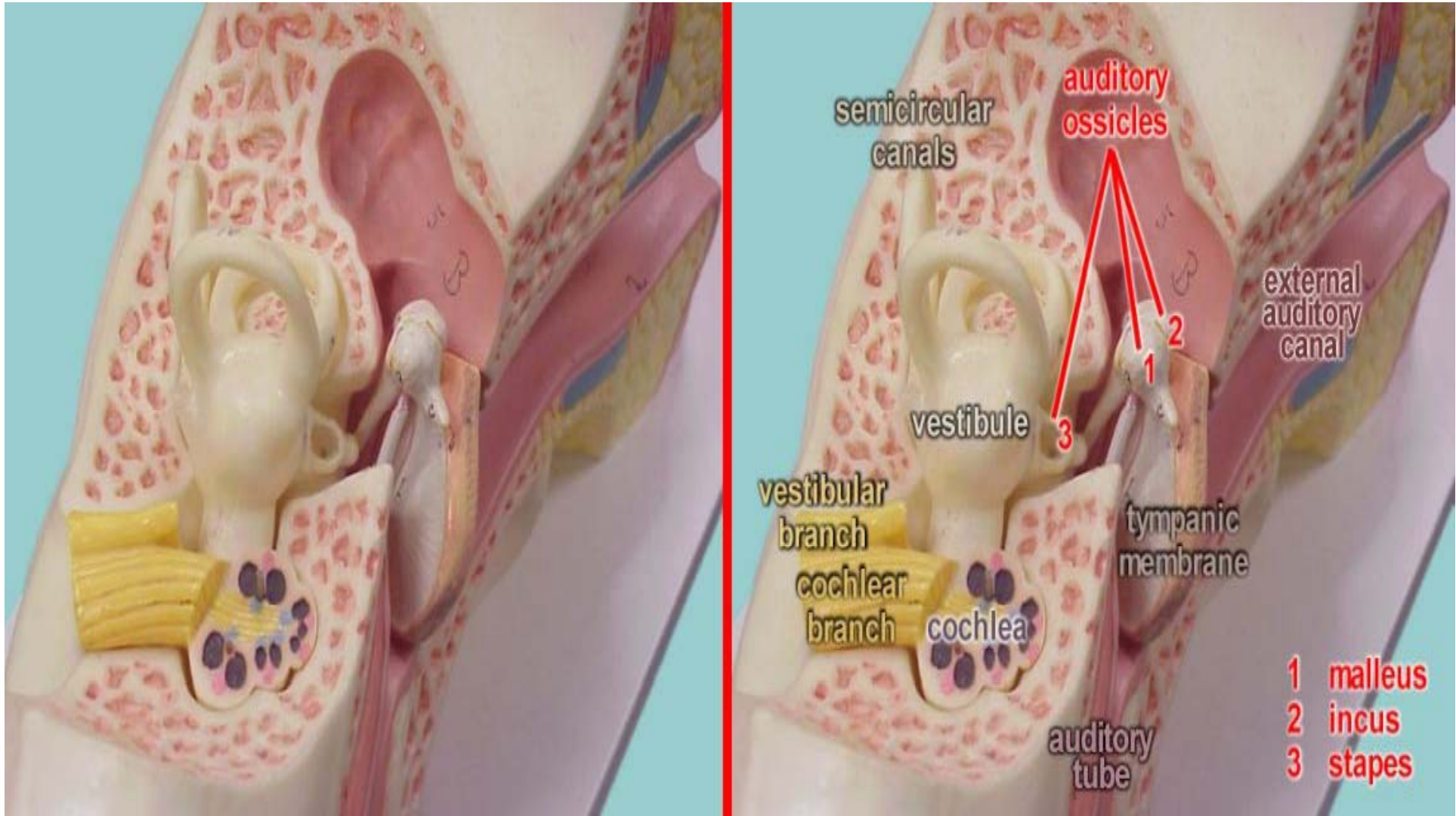


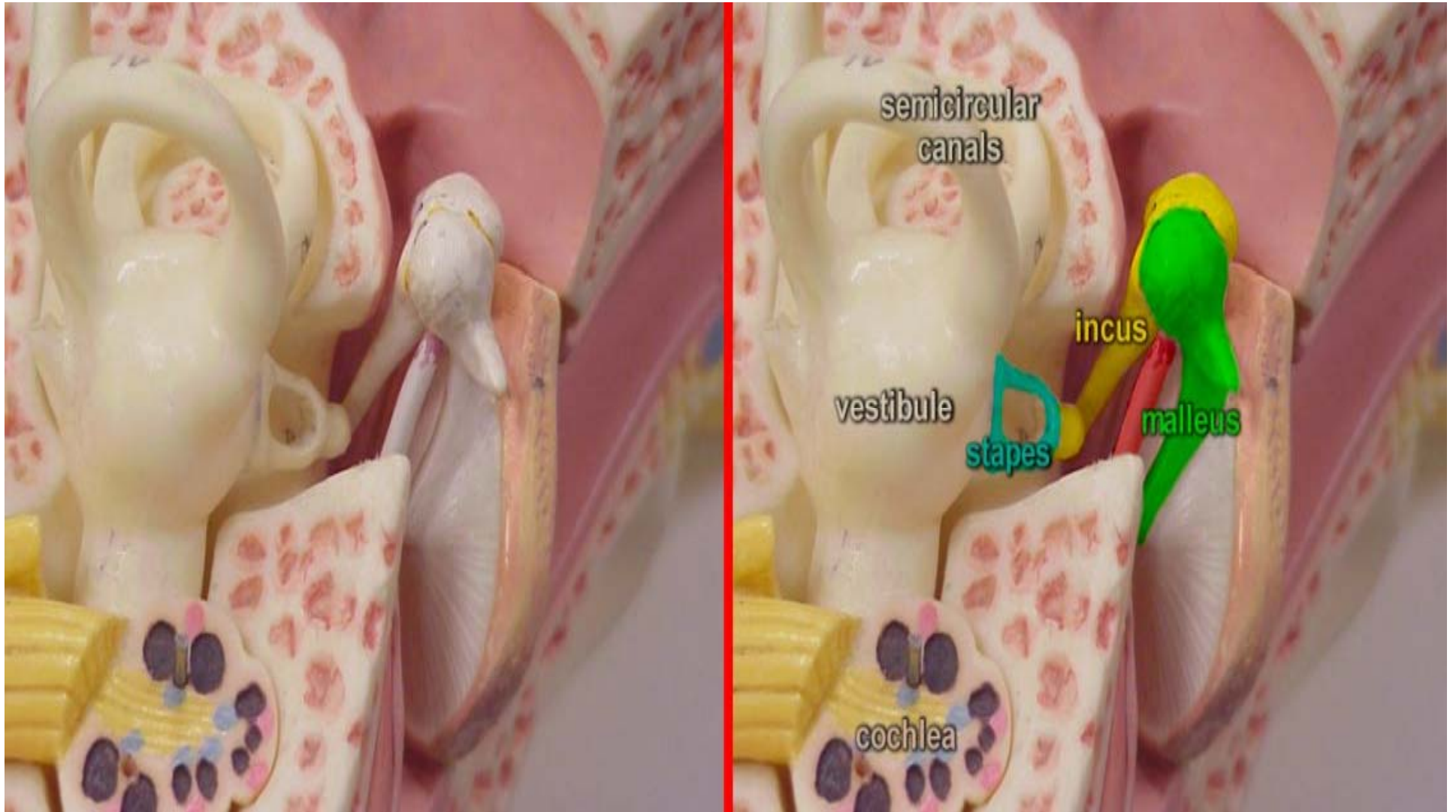
Membranous Labyrinth:

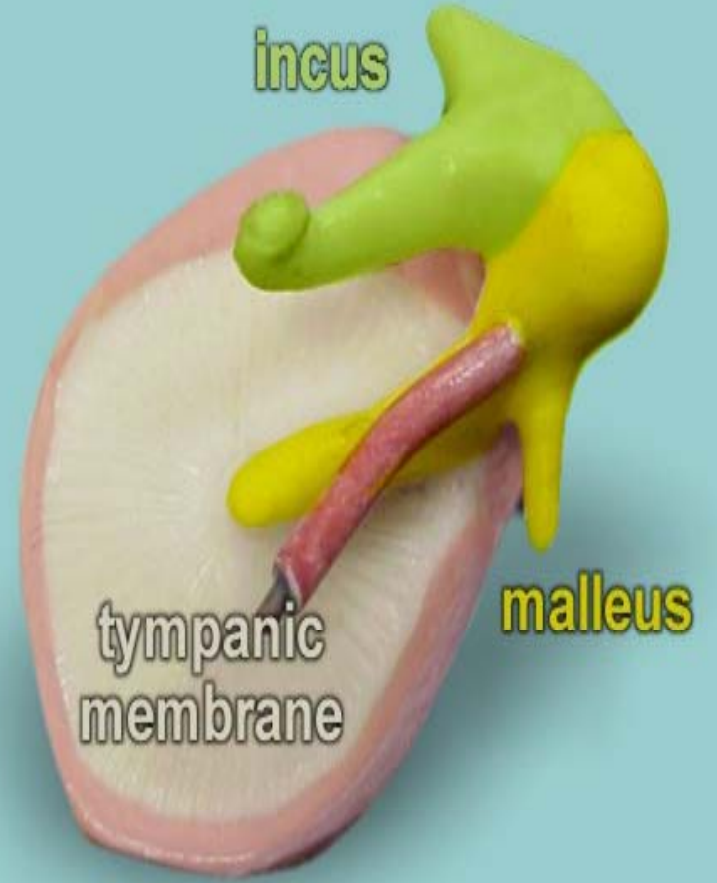
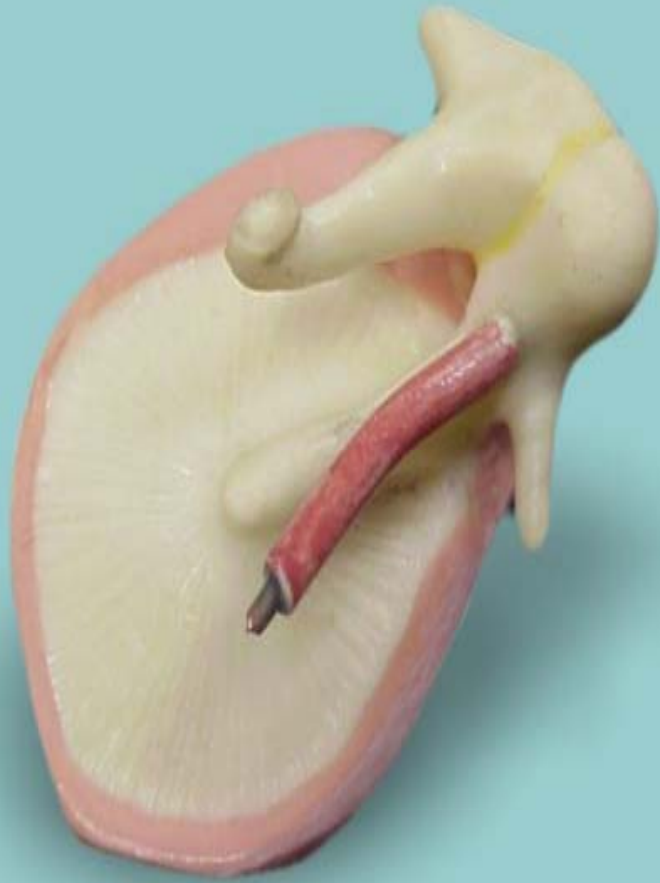
- △ semicircular ducts
- ▲ utricle
- ▲ saccule

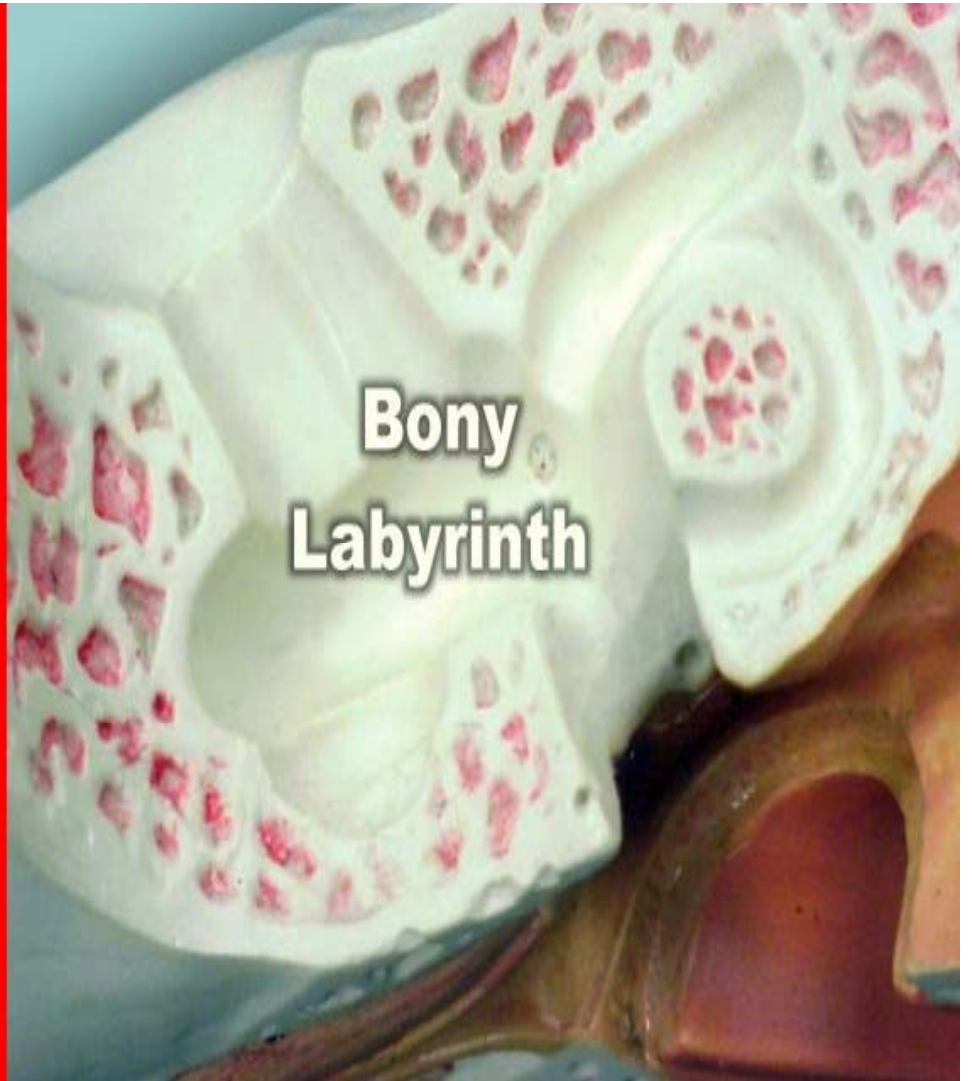






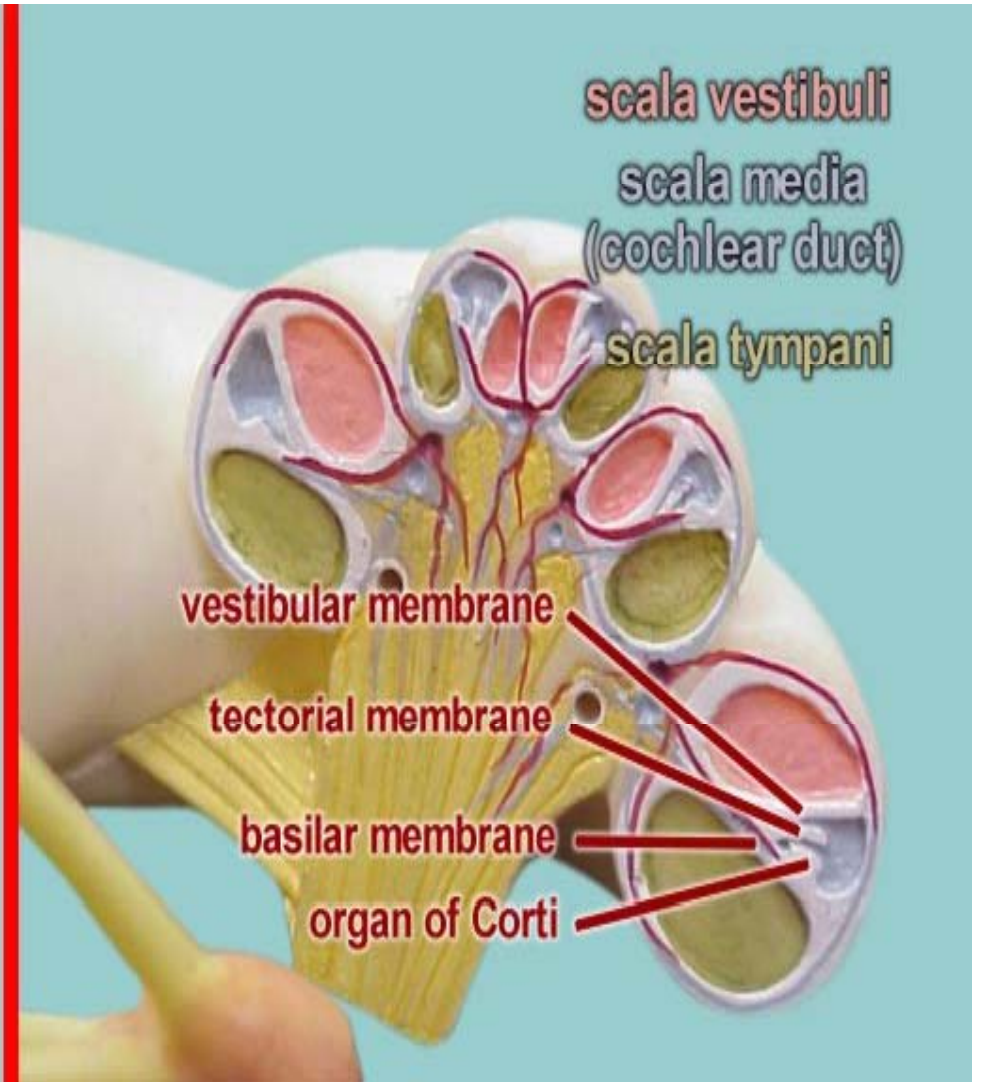
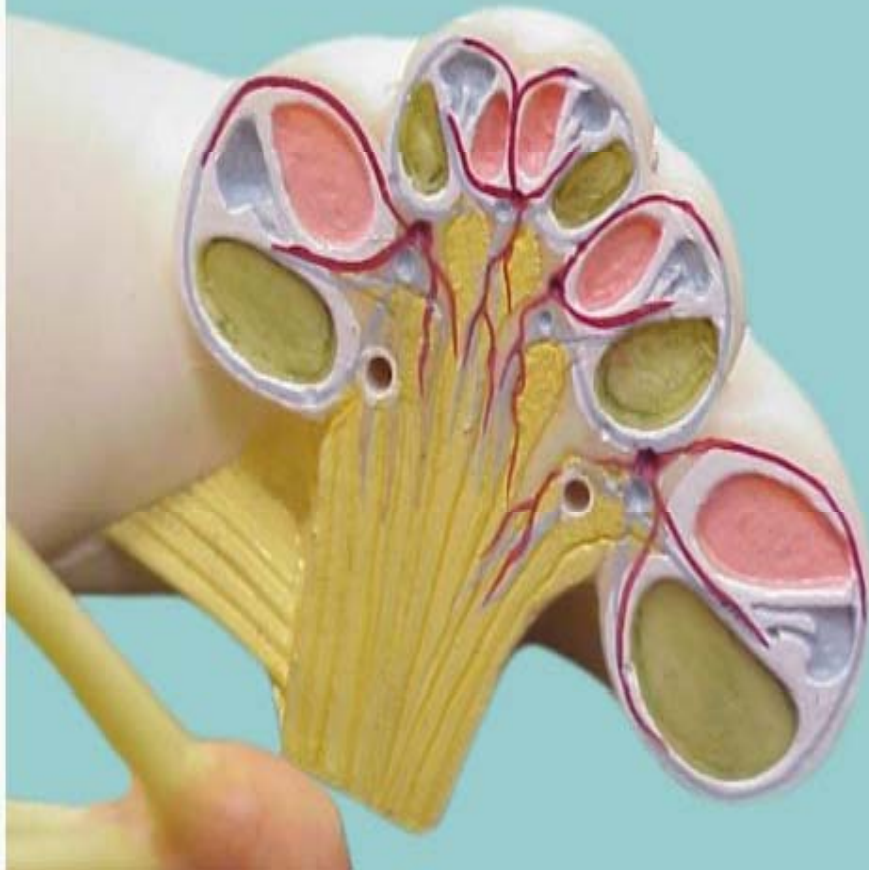


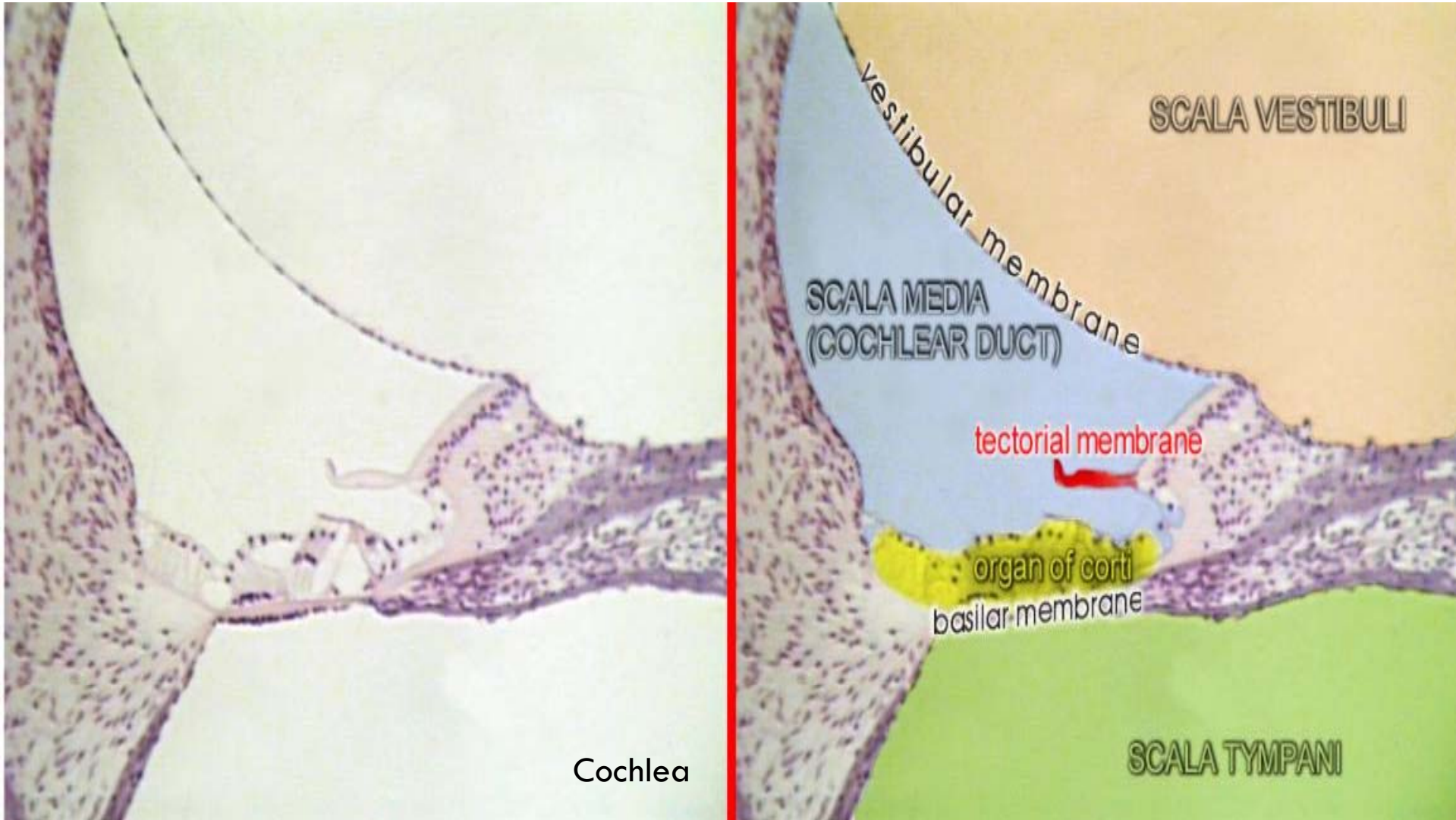




**Bony
Labyrinth**

Cochlea





Cochlea

SCALA VESTIBULI

SCALA MEDIA
(COCHLEAR DUCT)

vestibular membrane

tectorial membrane

organ of corti
basilar membrane

SCALA TYMPANI