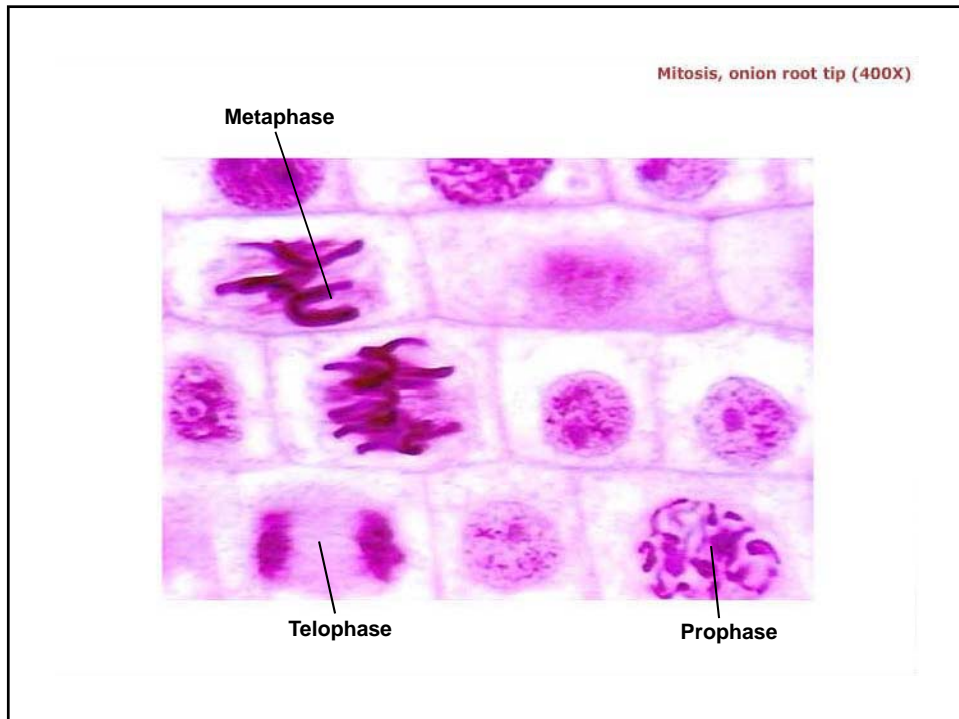
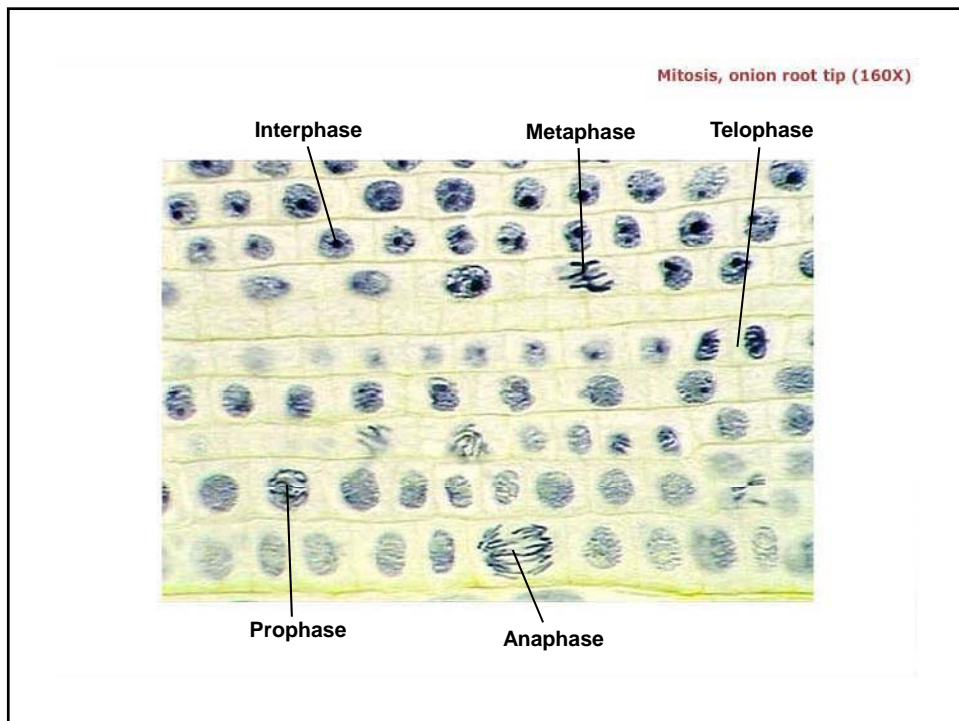
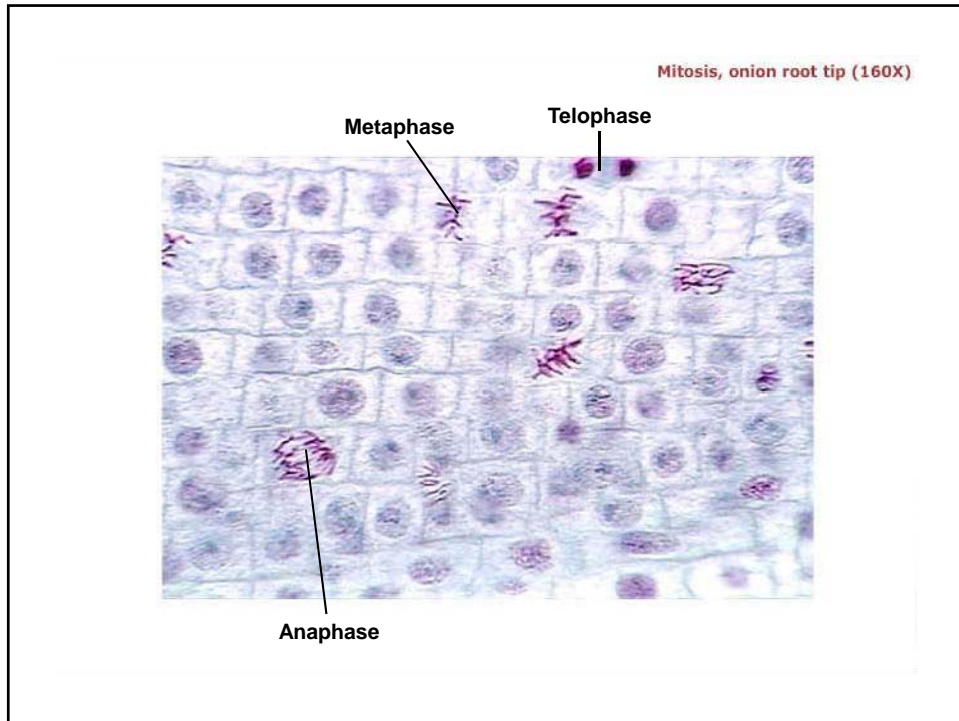
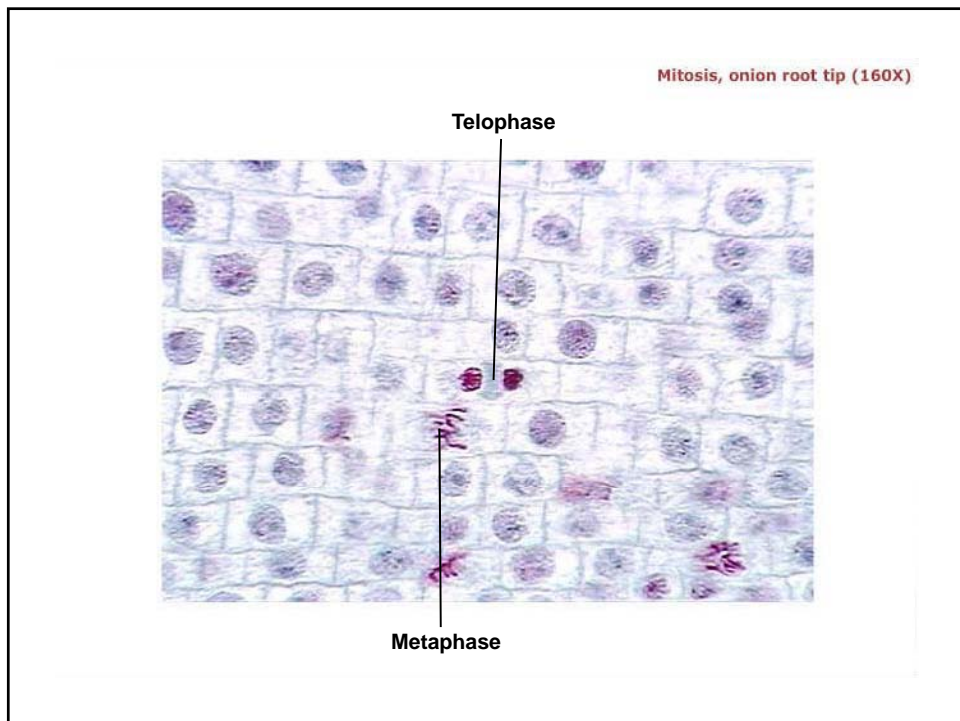
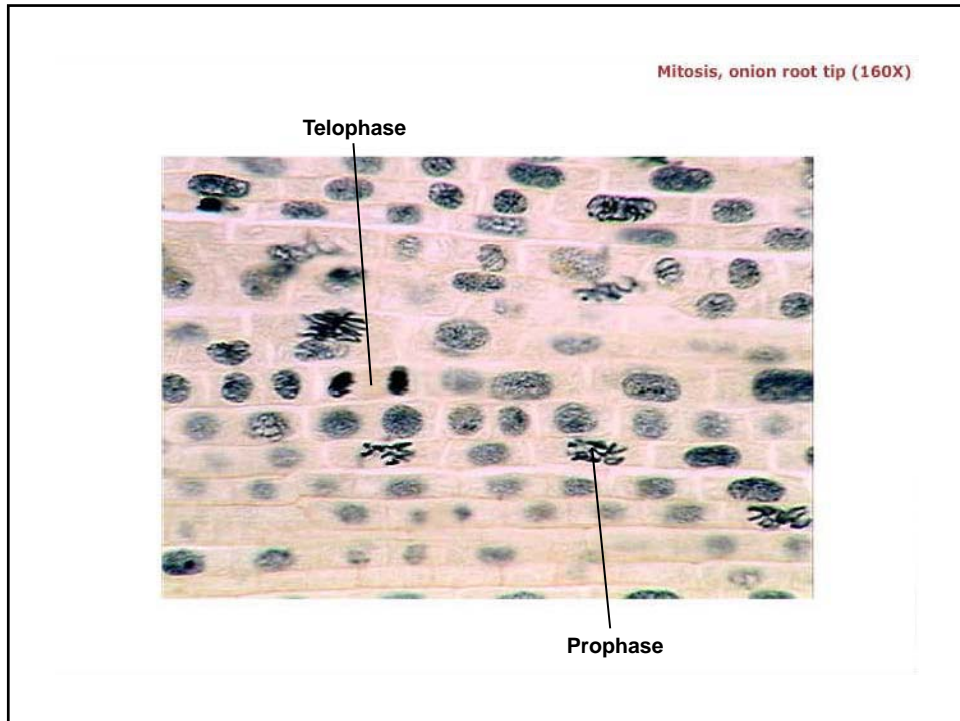
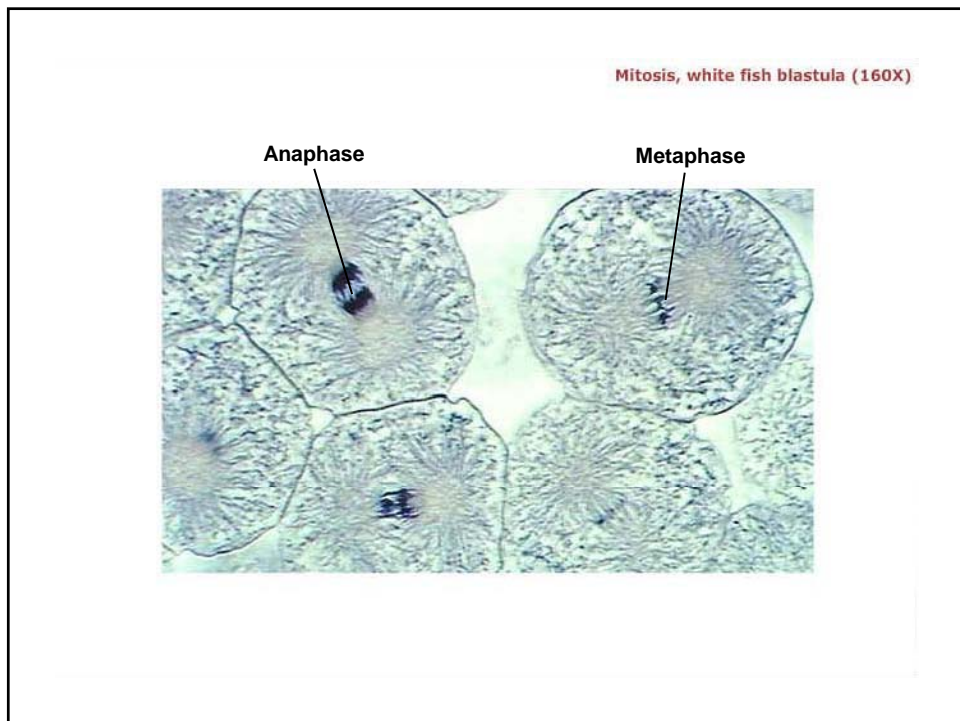
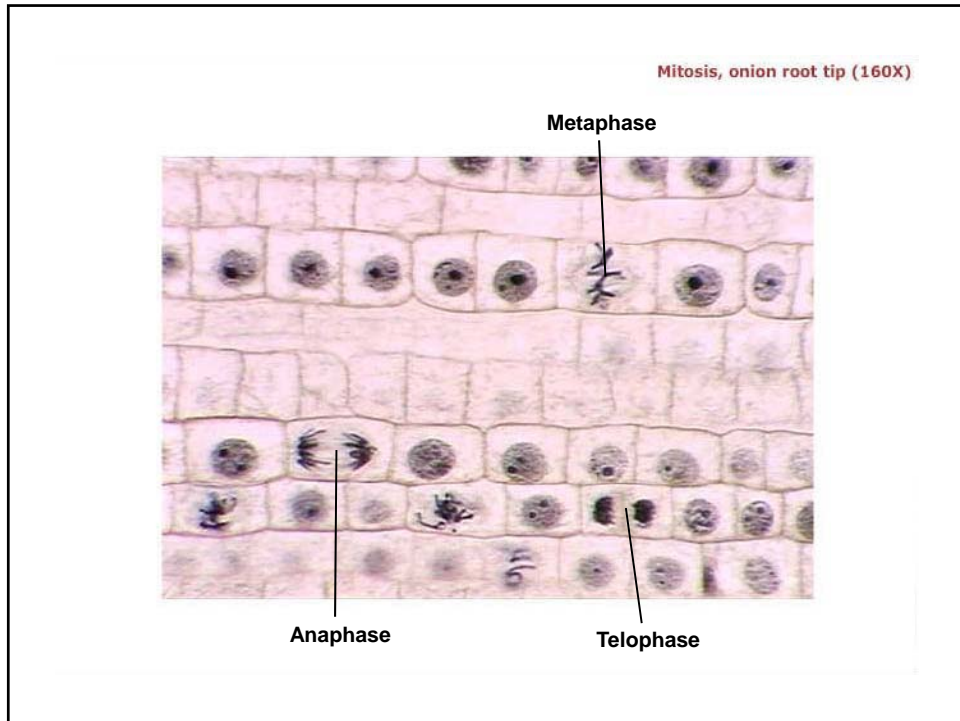


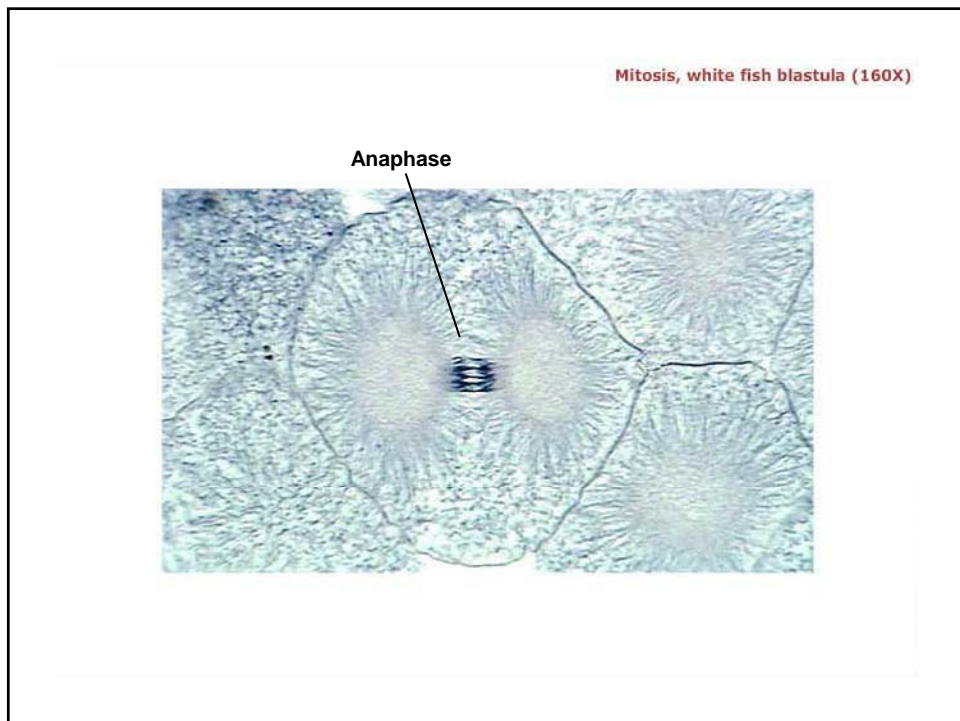
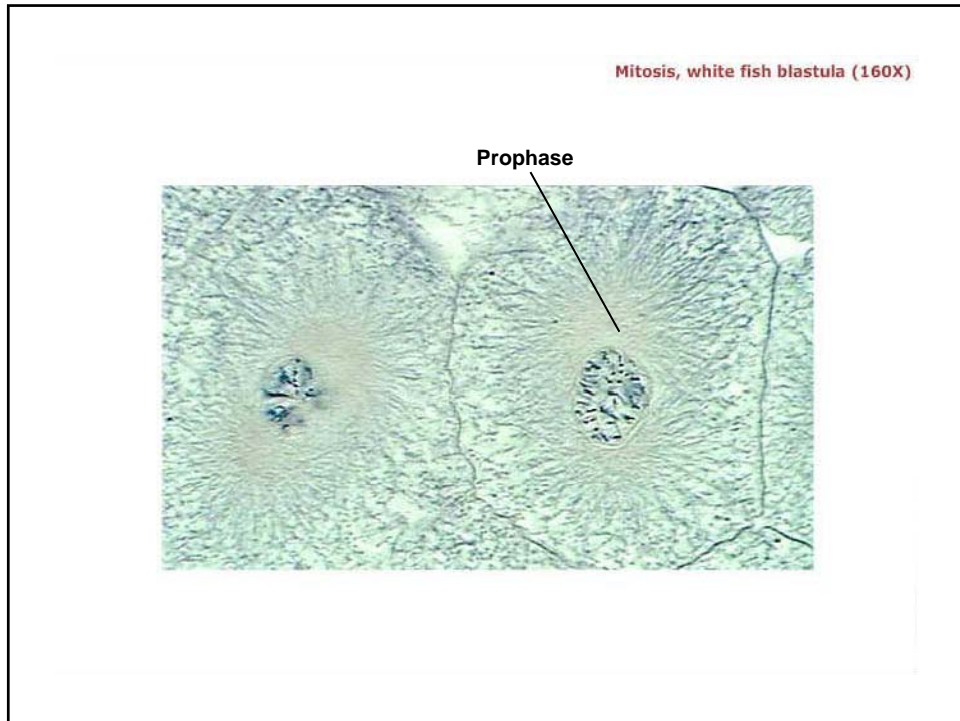
Histological Pics

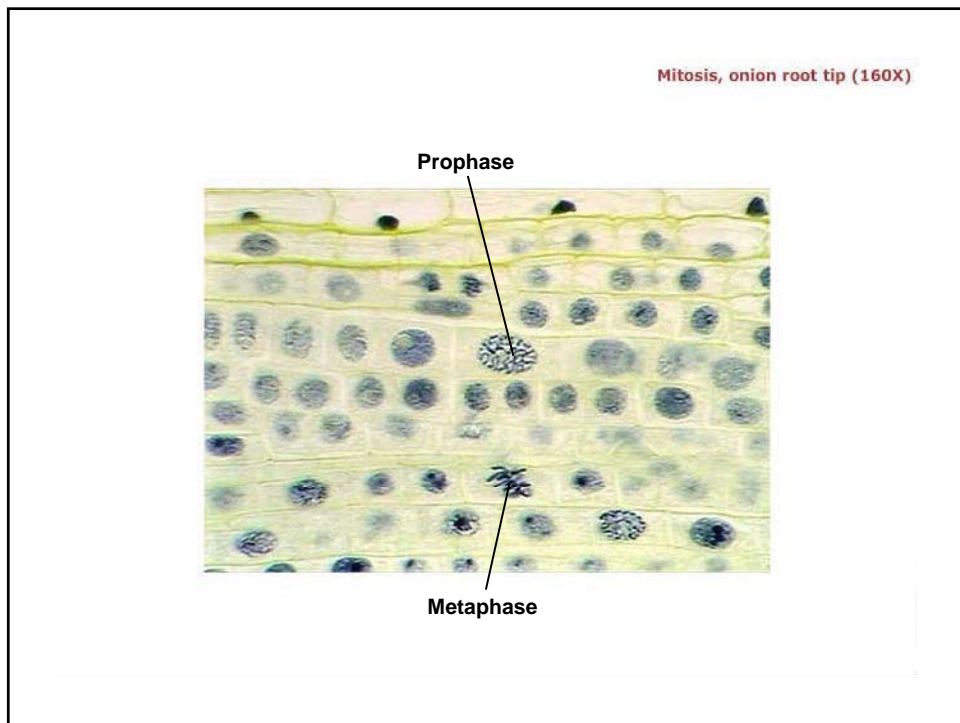
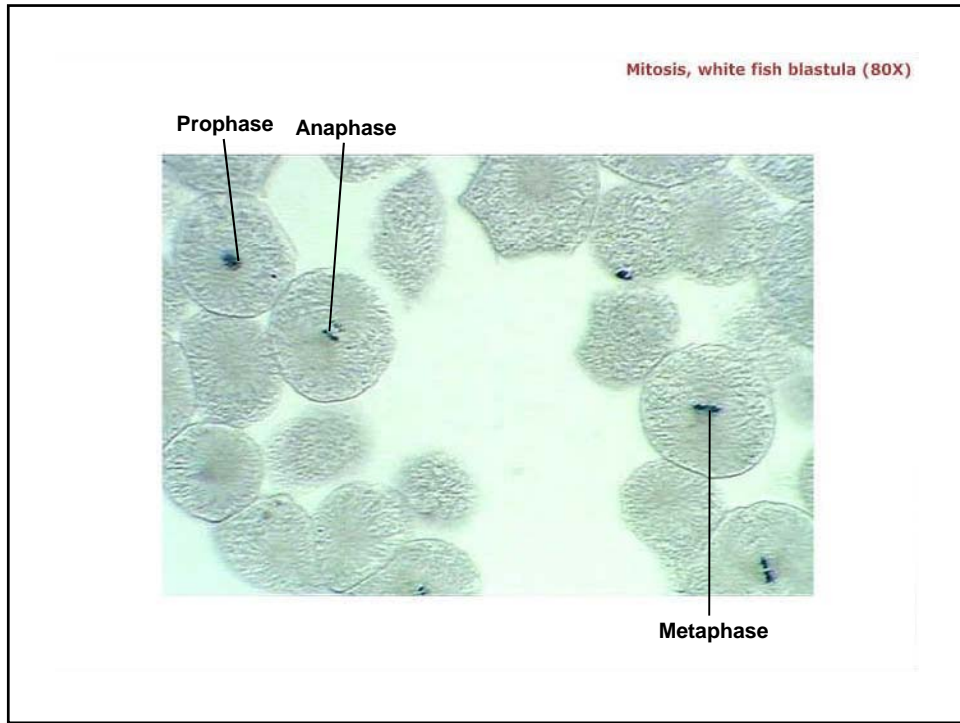


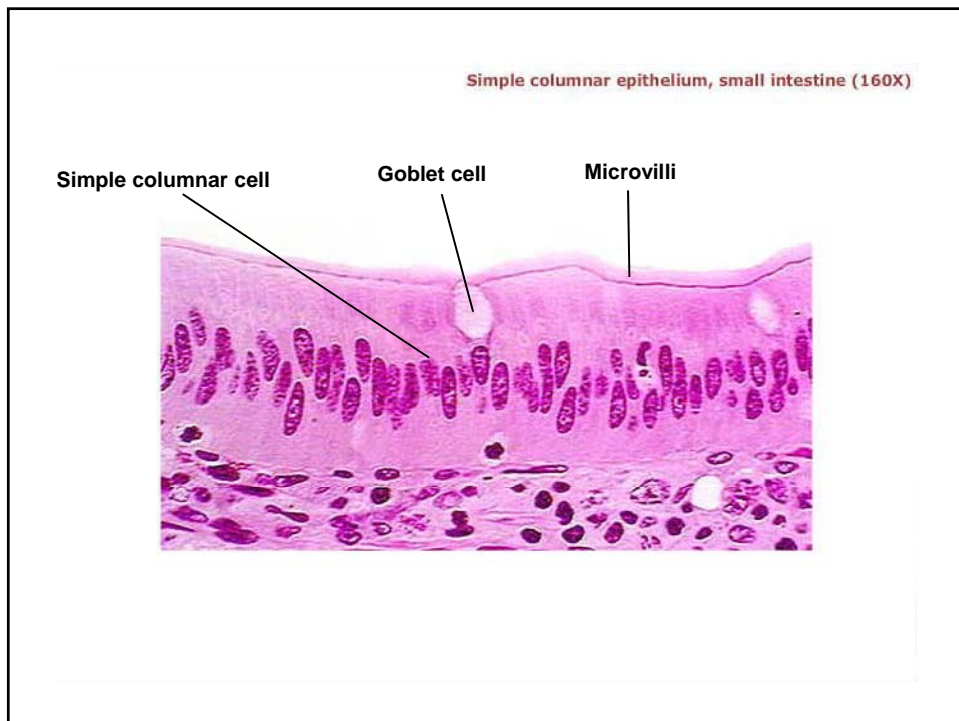
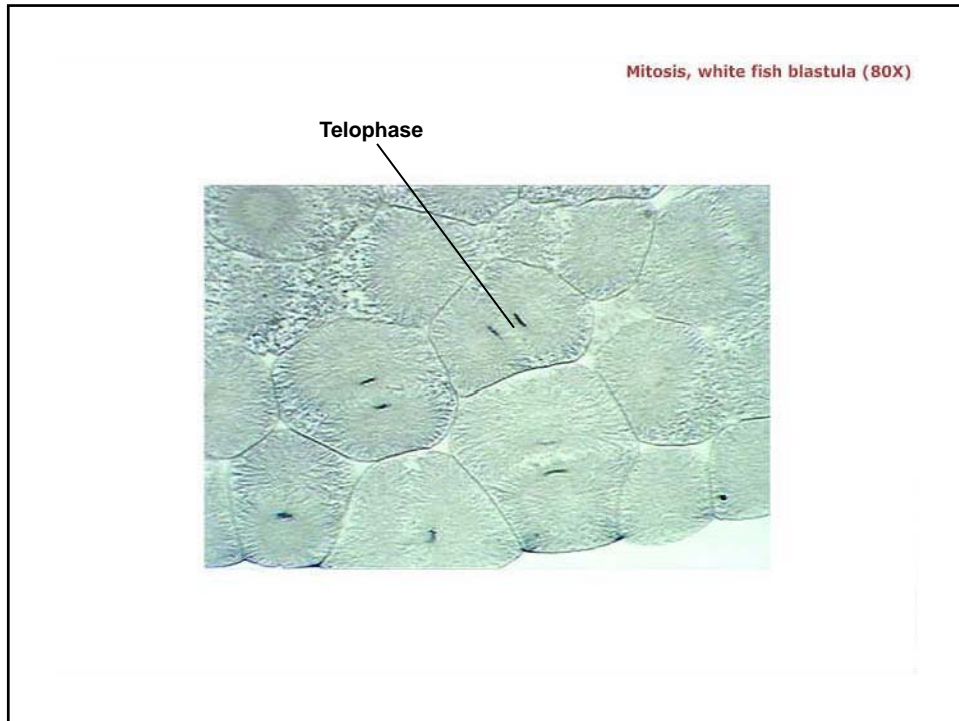


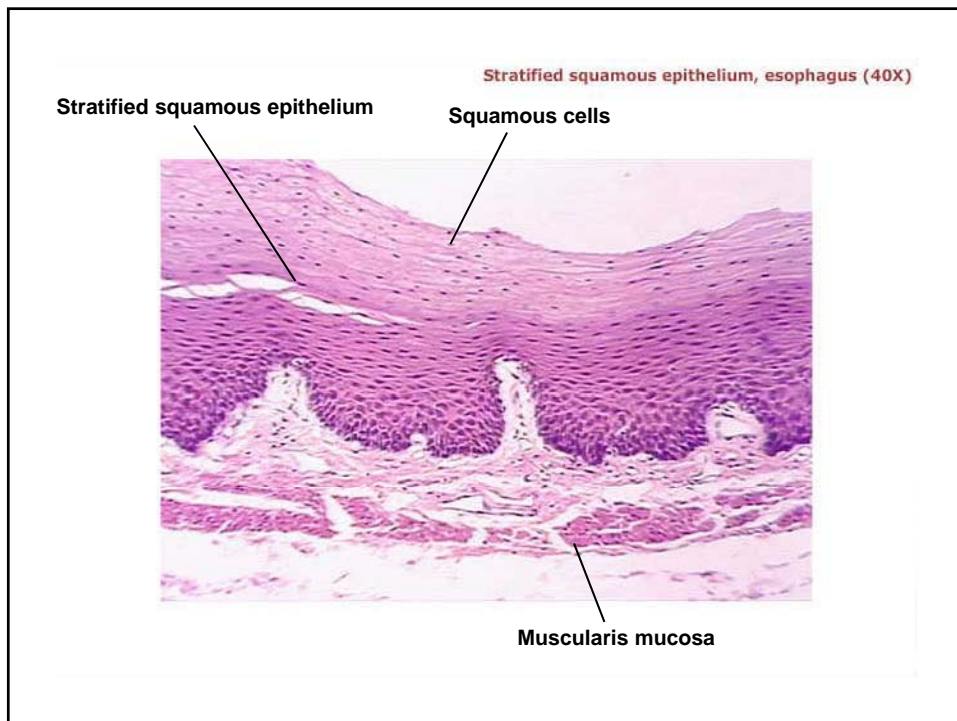
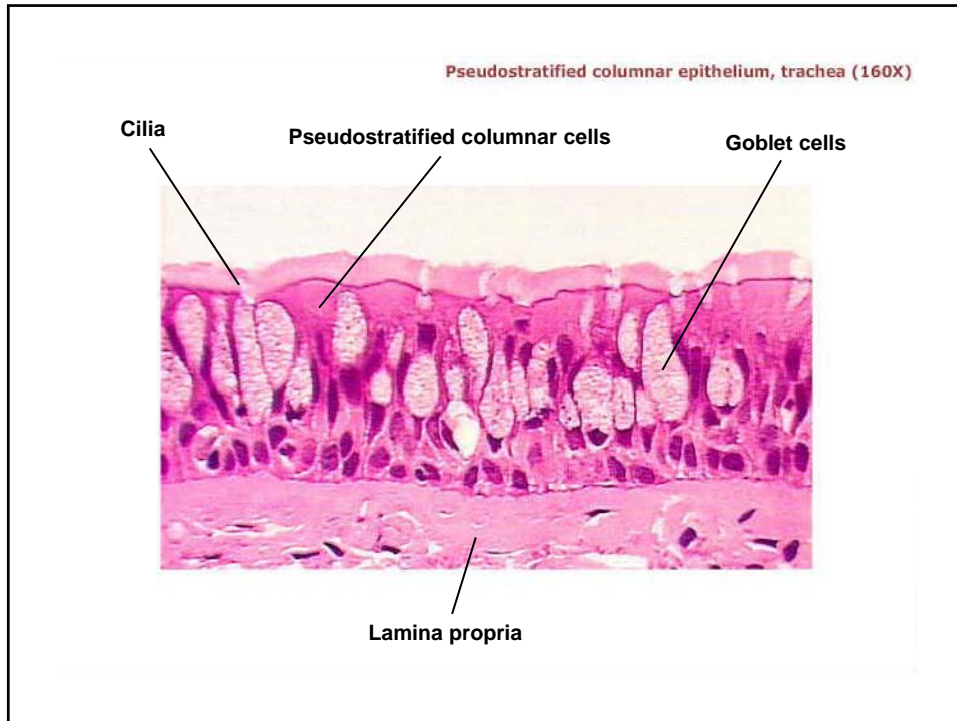


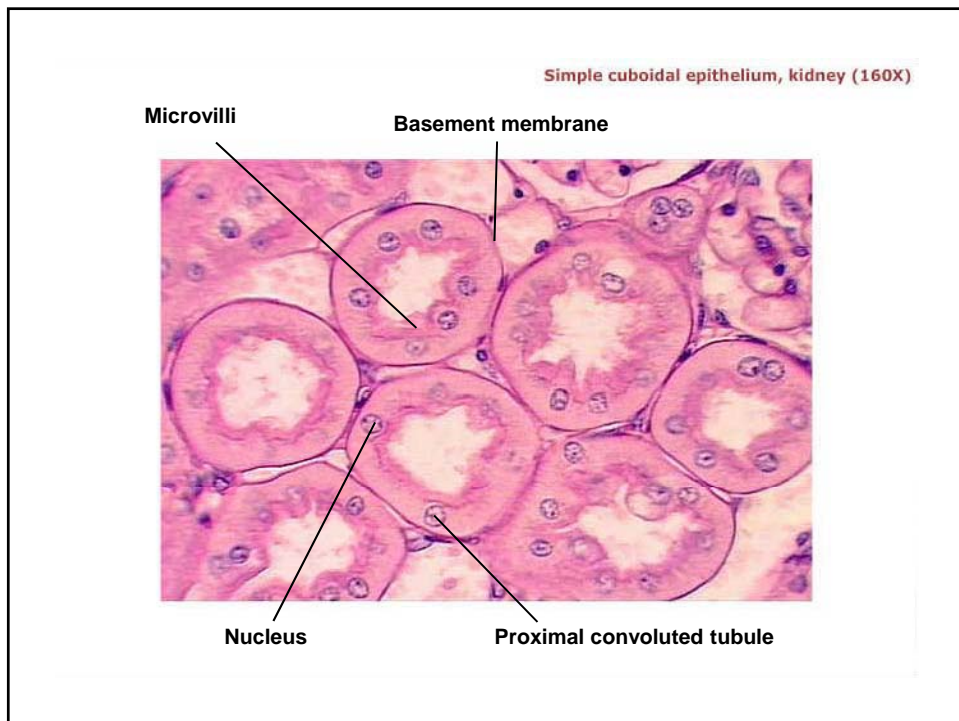
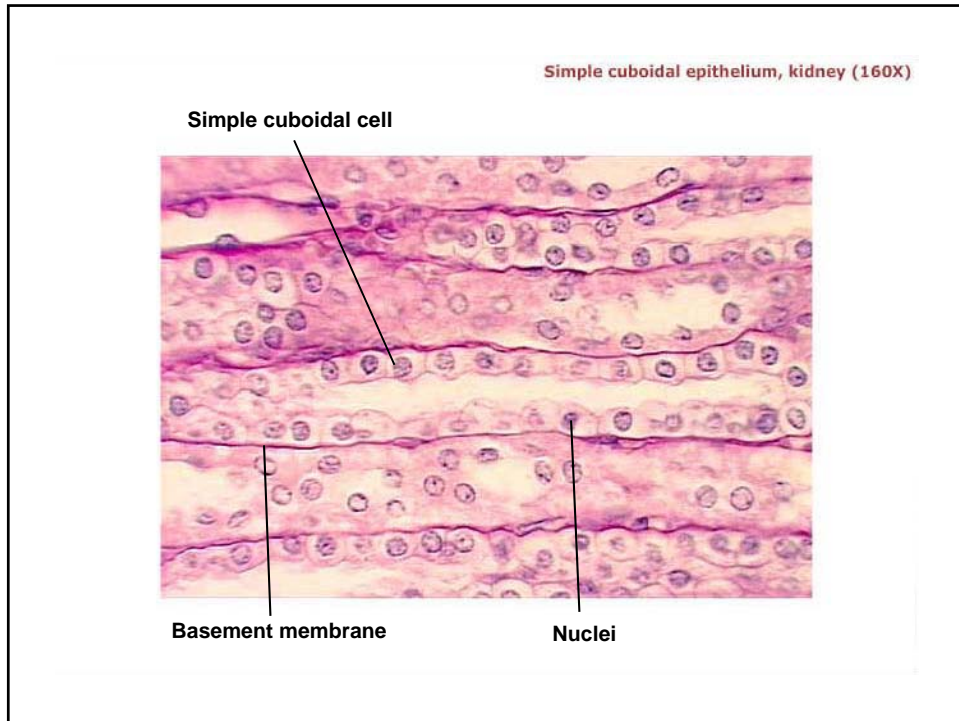


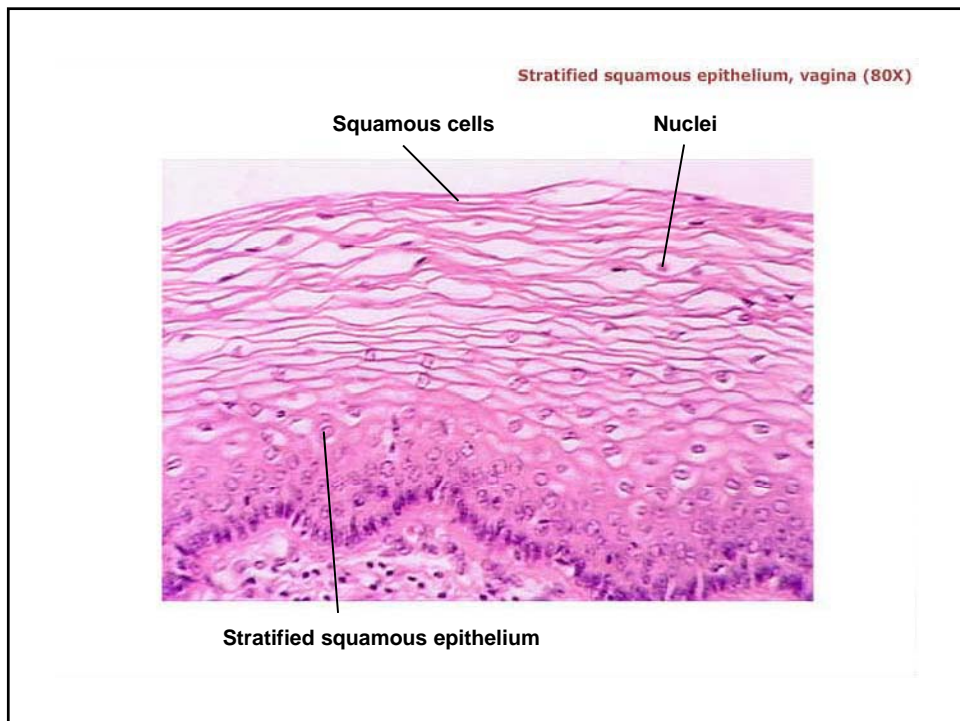
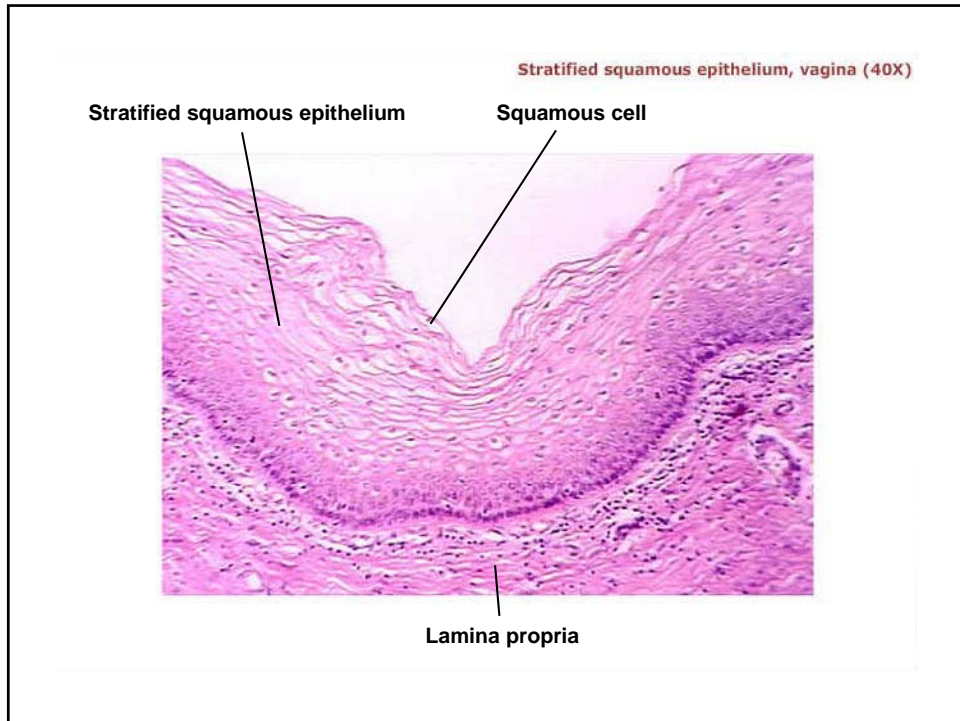


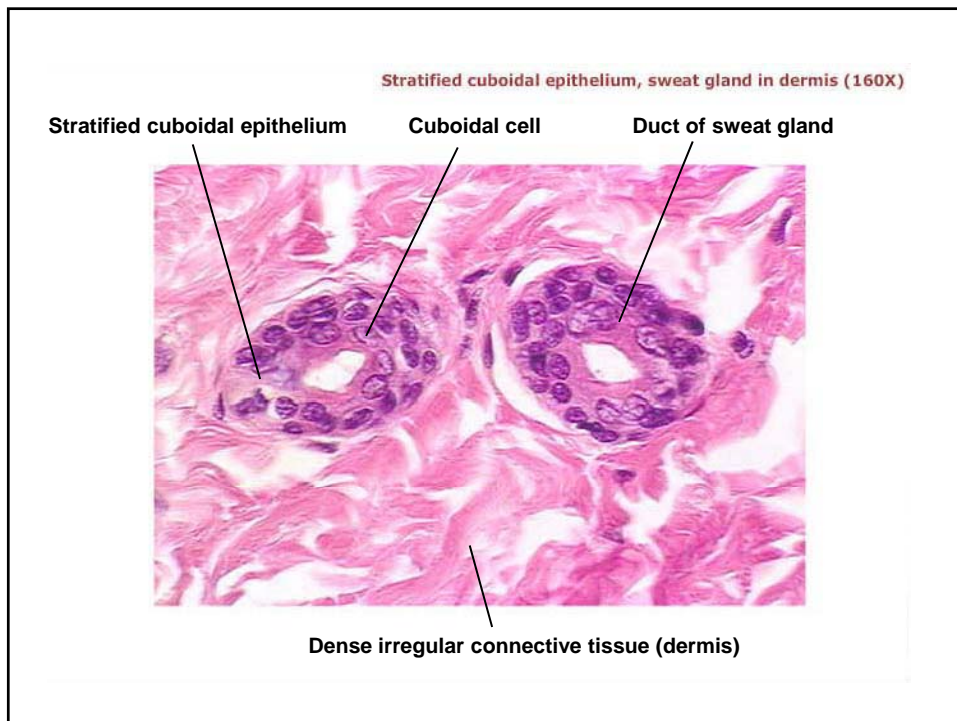
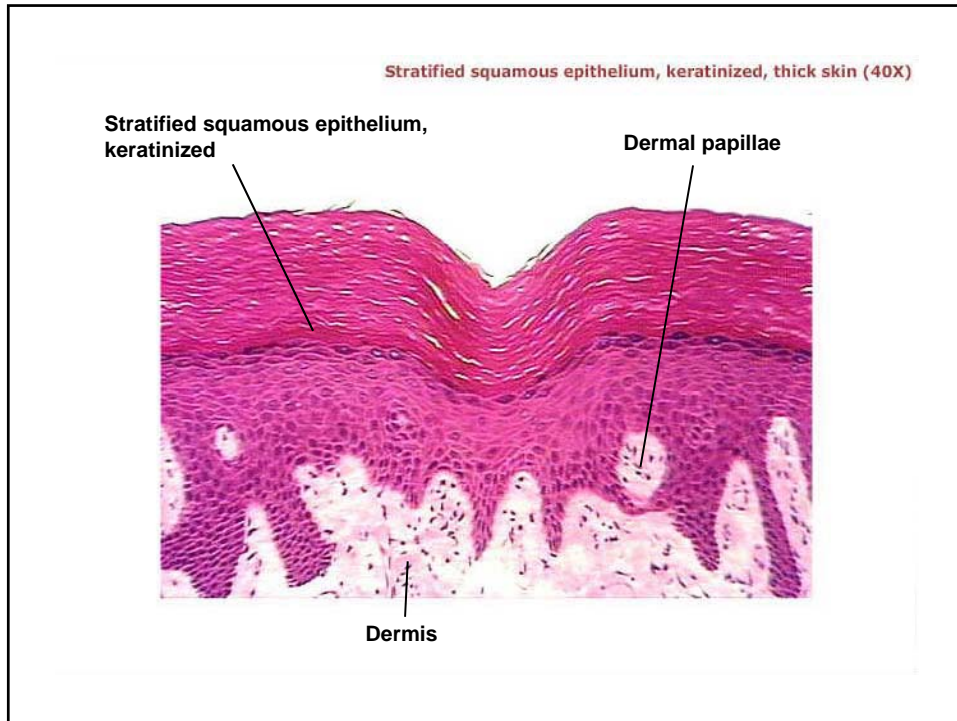


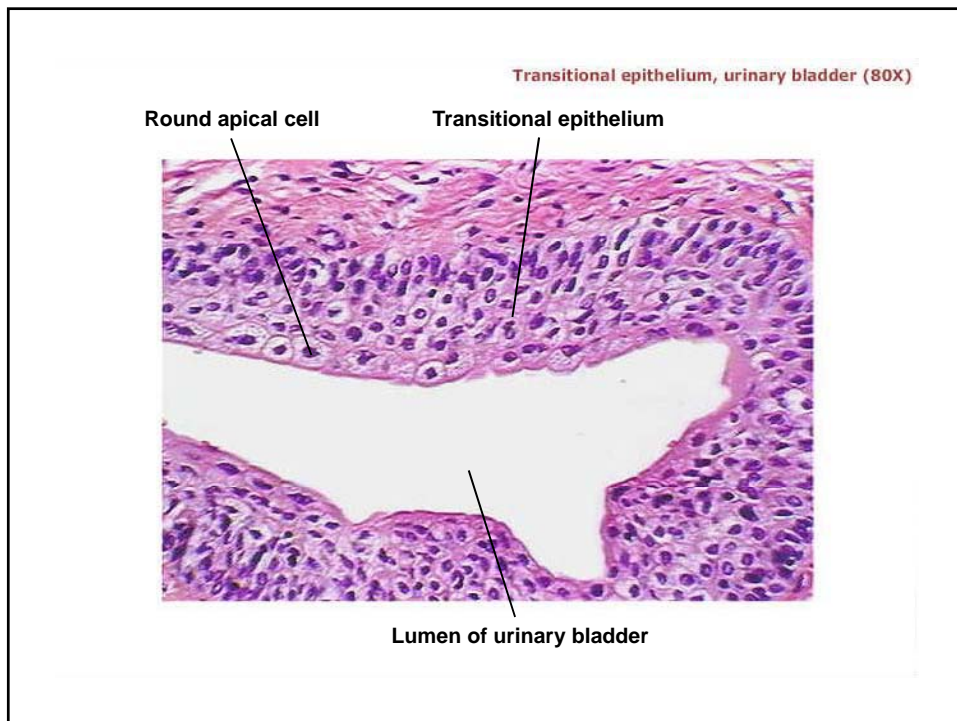
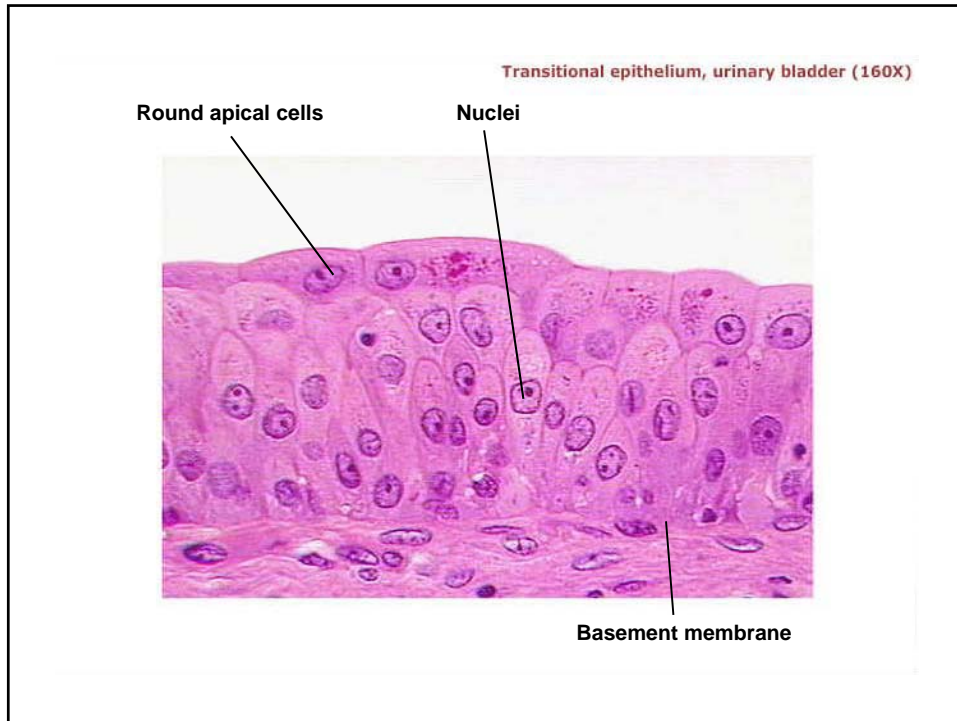






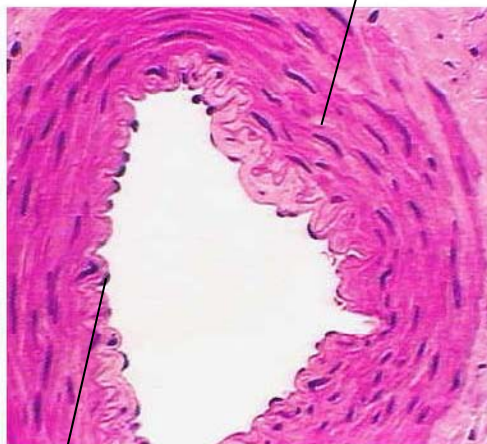






Simple squamous epithelium, small muscular artery (80X)

Smooth muscle



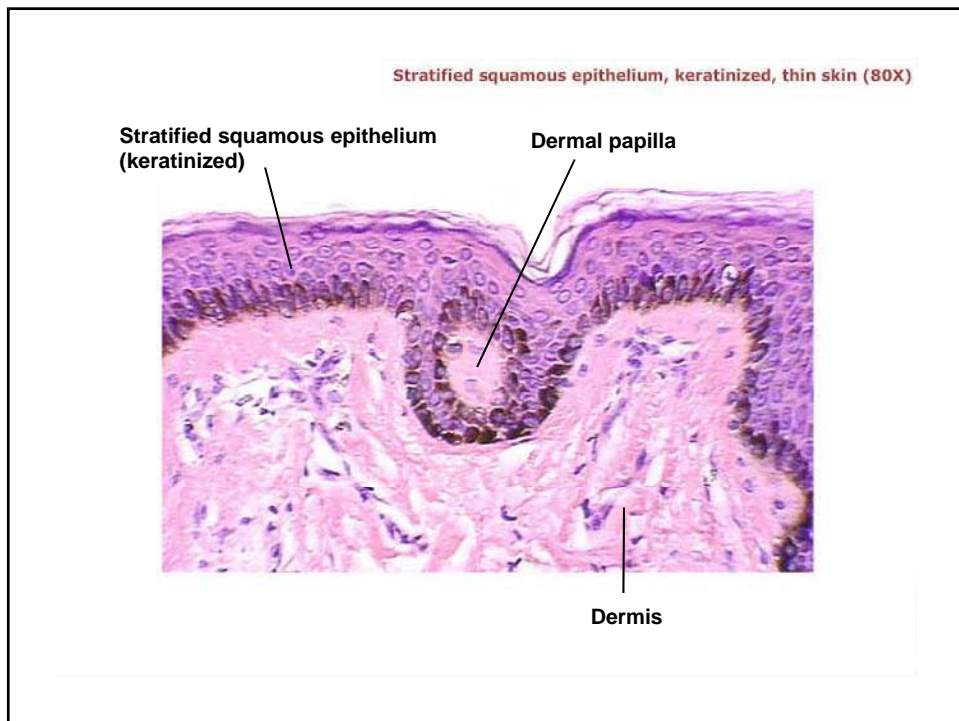
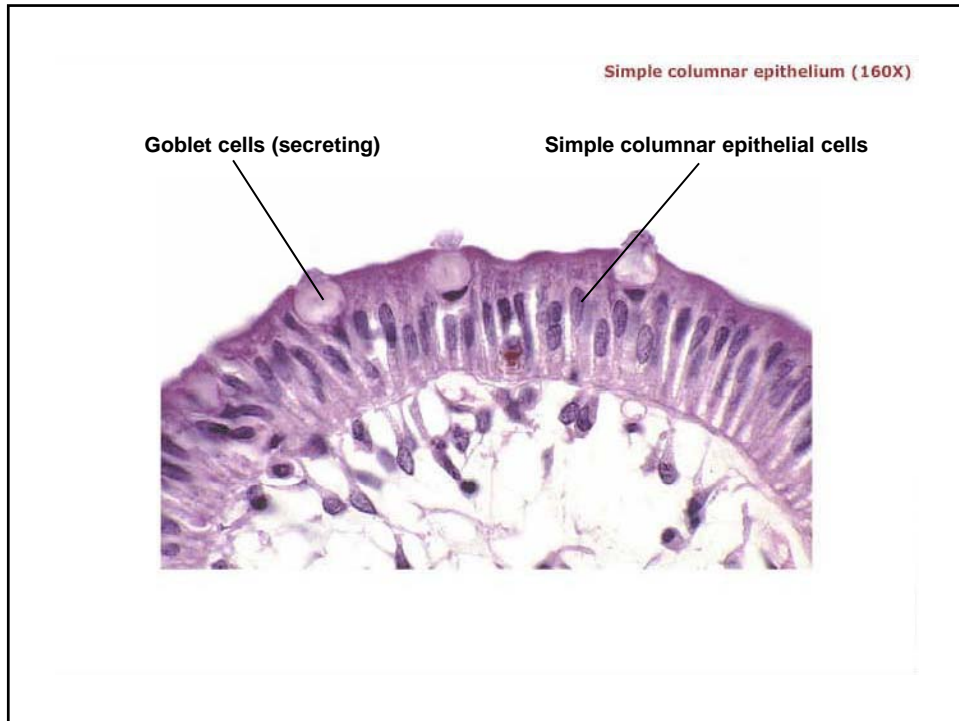
Simple squamous epithelium

Simple squamous epithelium (160X)

Simple squamous cell

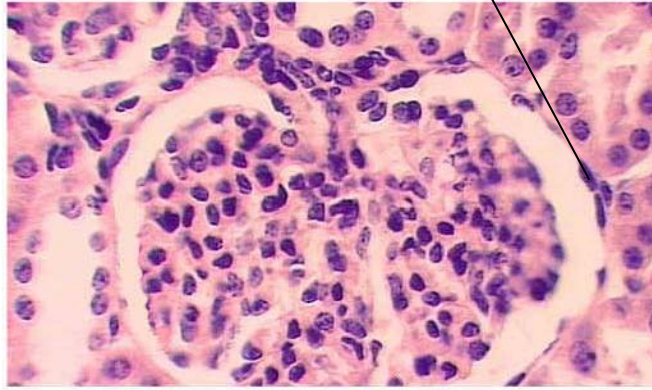
Nucleus





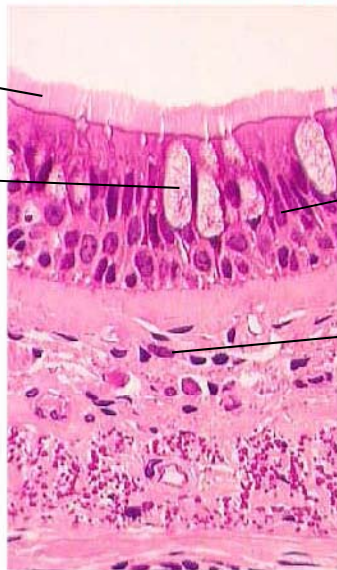
Simple squamous epithelium, kidney (160X)

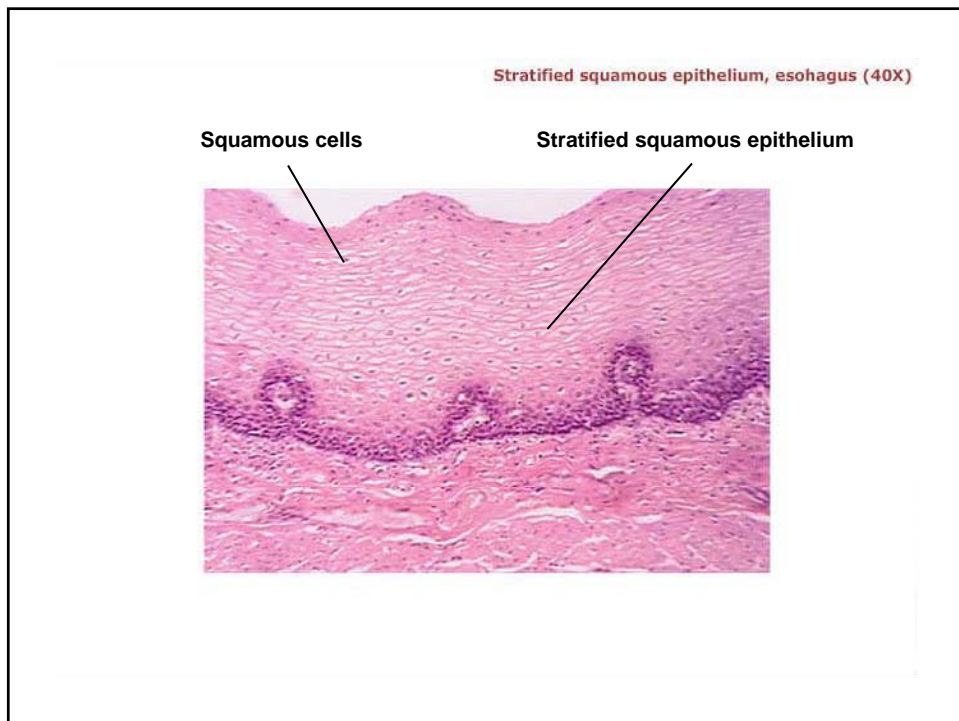
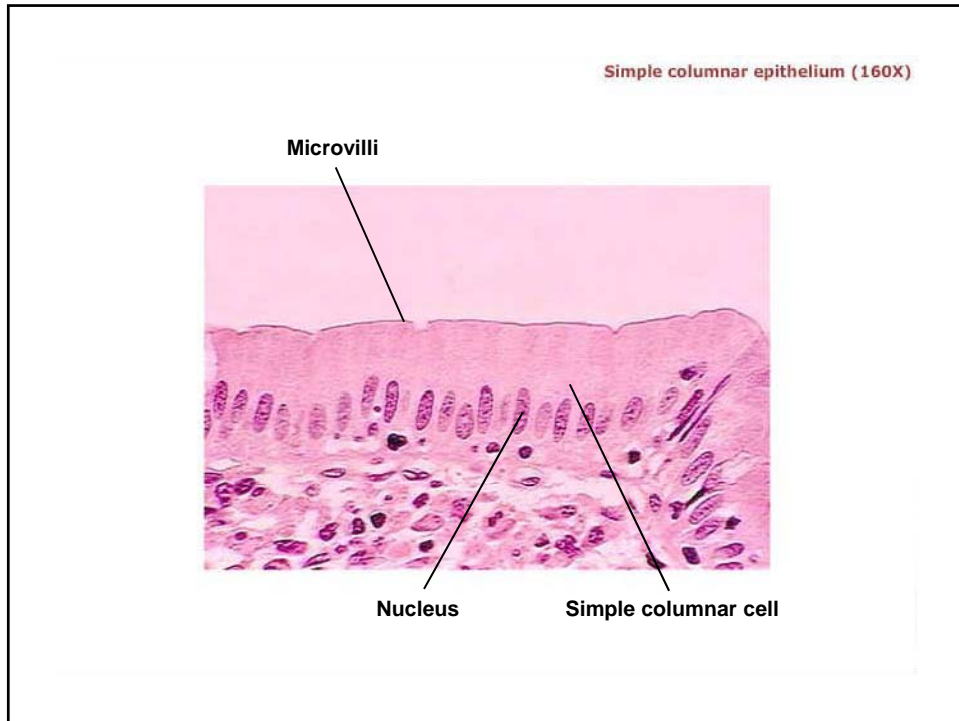
Simple squamous cells



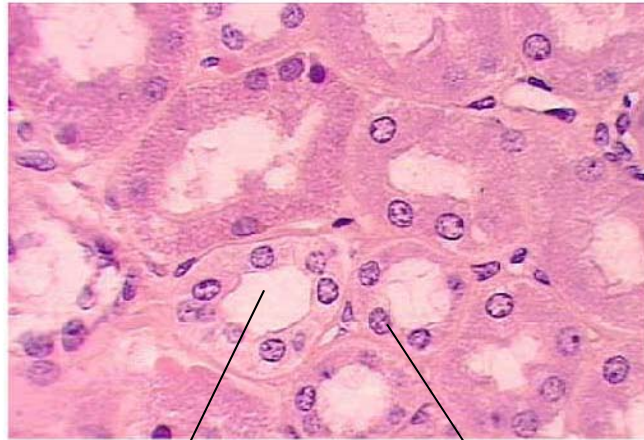
Pseudostratified columnar epithelium, trachea (160X)

Cilia
Goblet cell
Nuclei
Lamina propria





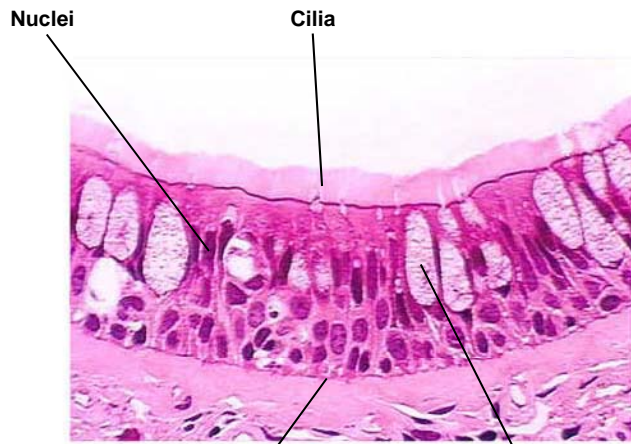
Simple cuboidal epithelium, kidney (160X)



Distal convoluted tubules

Simple cuboidal cells

Pseudostratified columnar epithelium, trachea (160X)

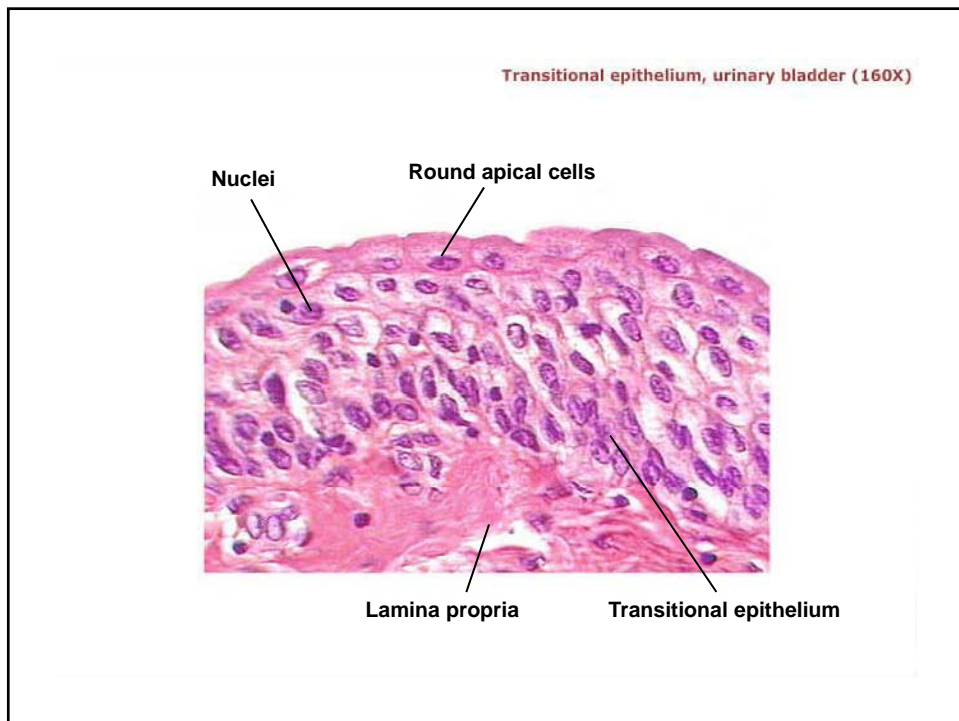
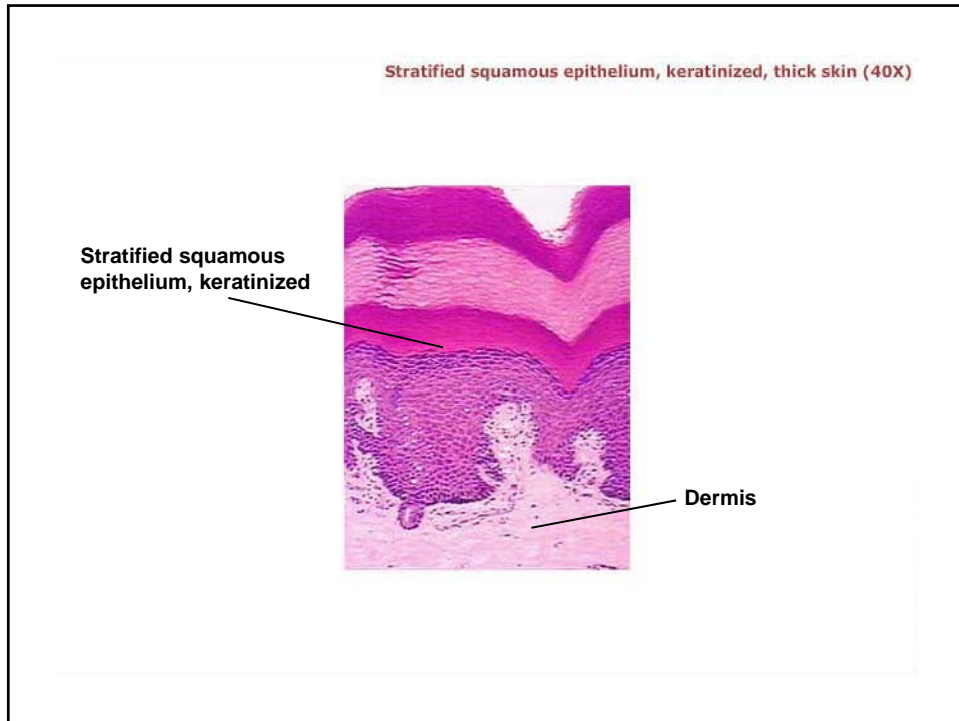


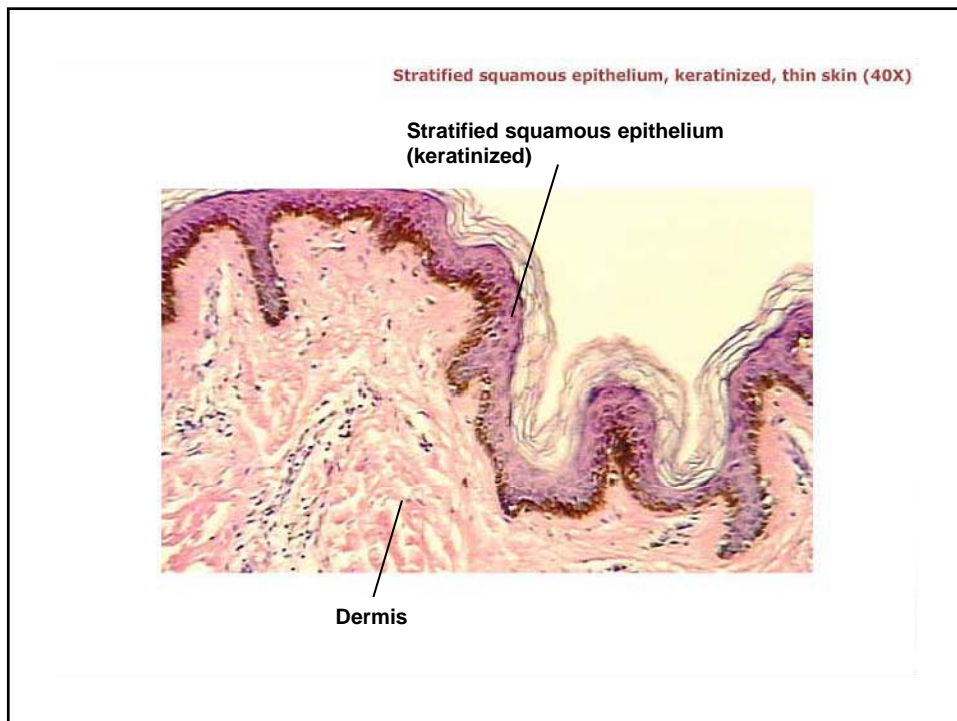
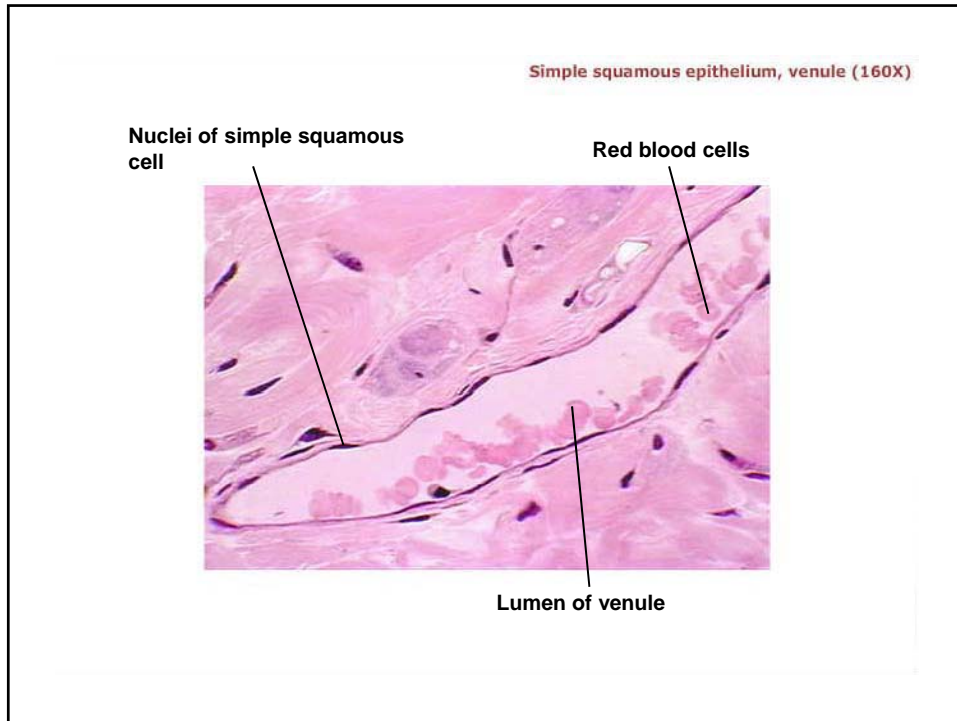
Nuclei

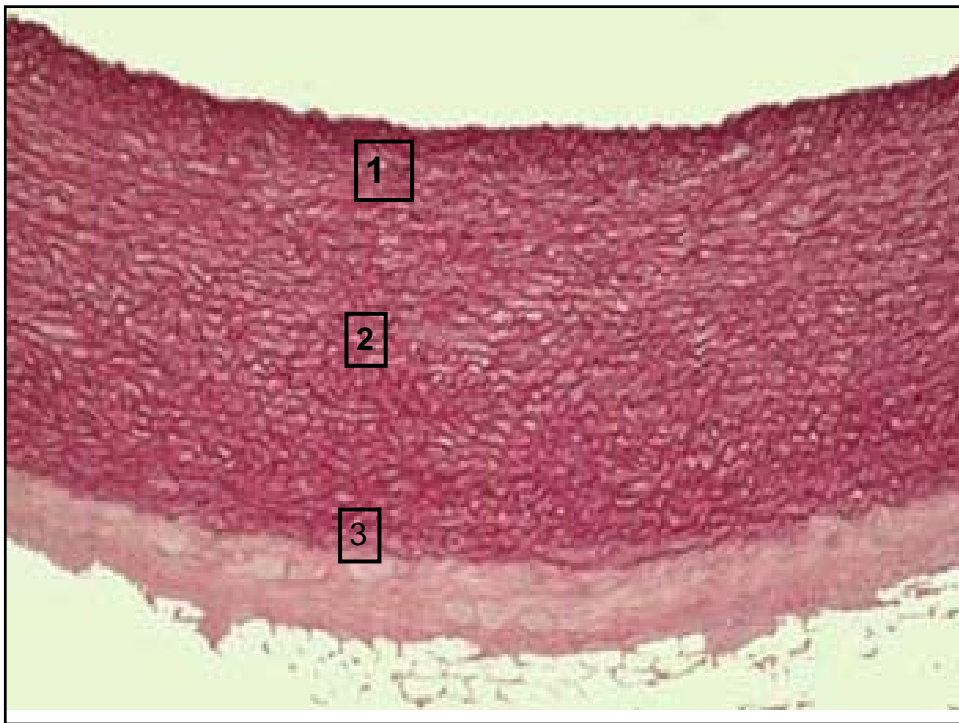
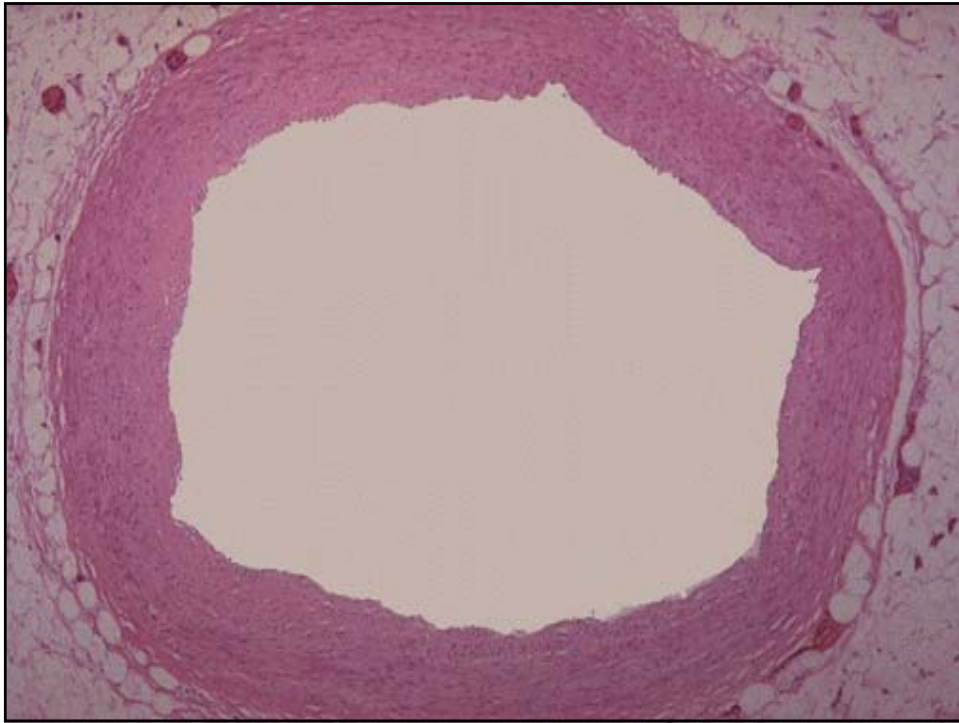
Cilia

Basement membrane

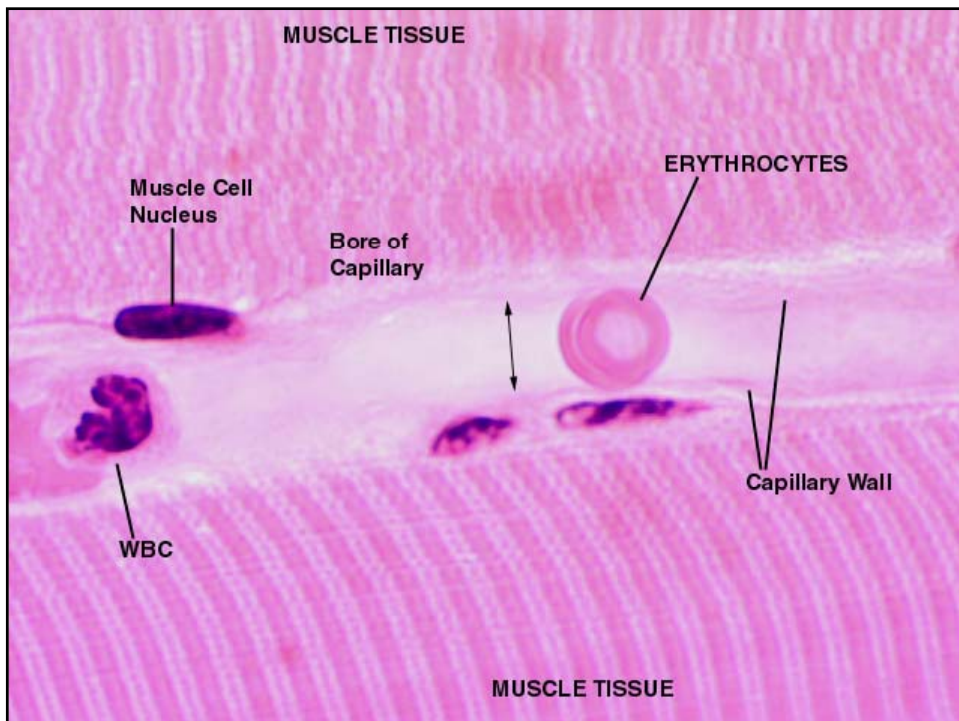
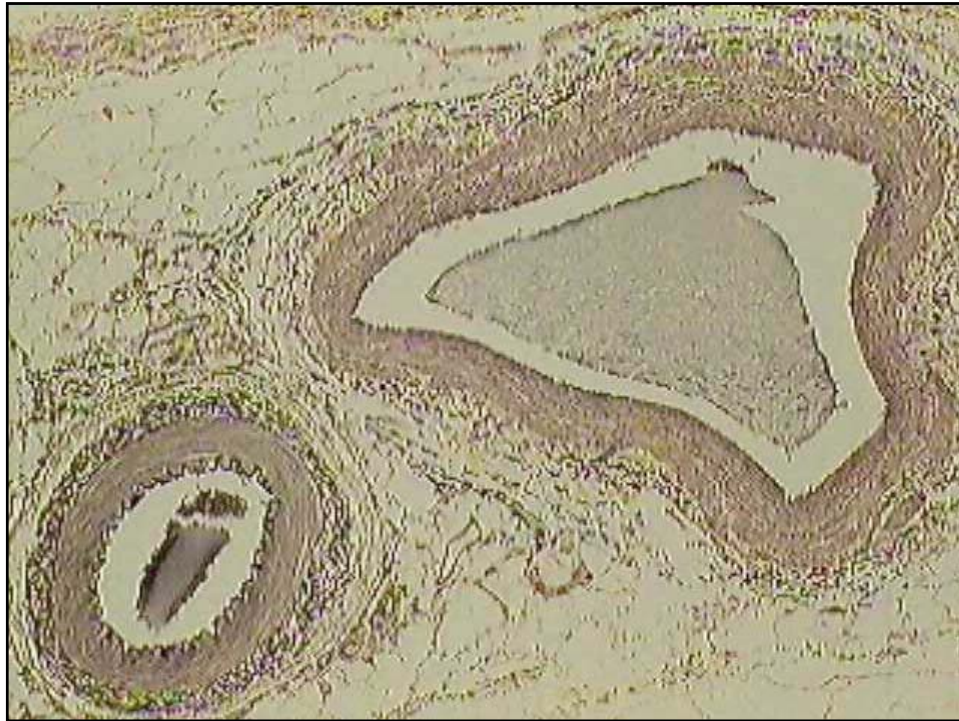
Goblet cells

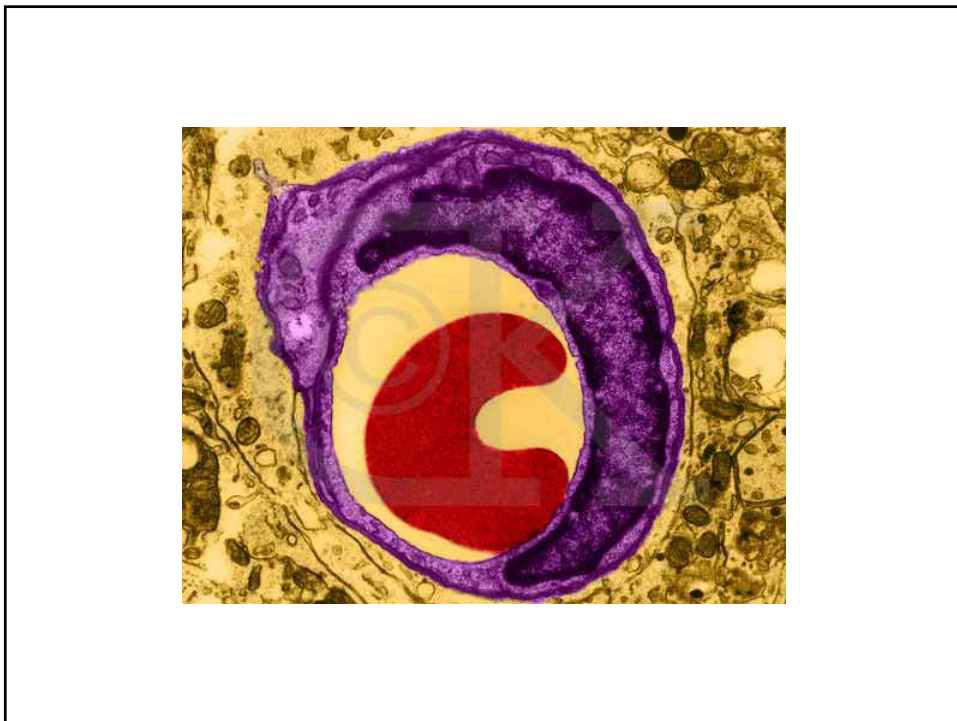


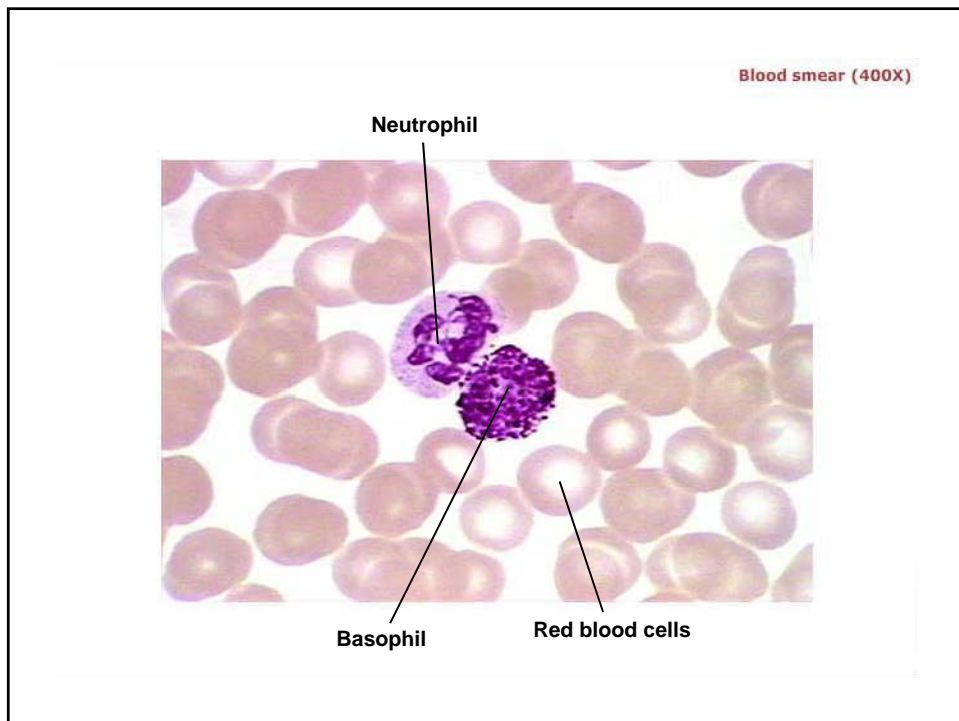
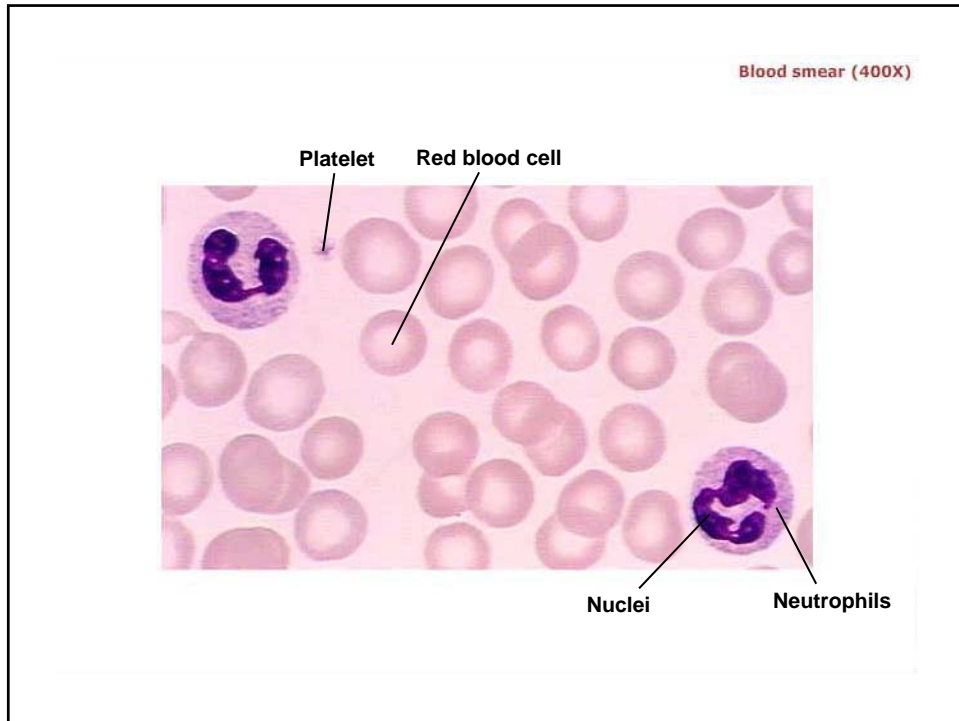


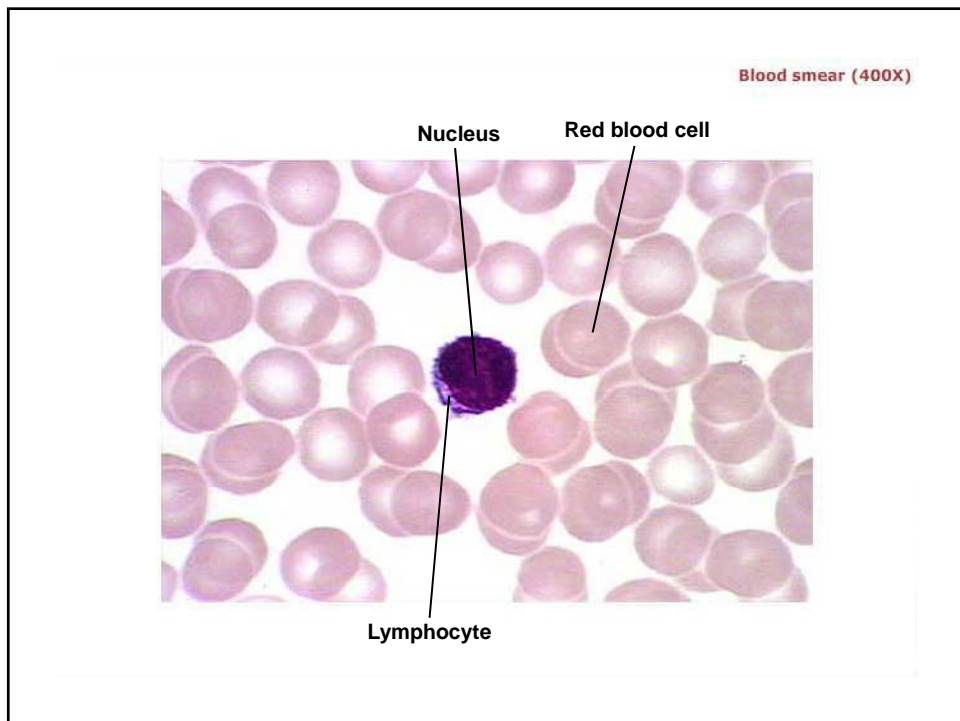
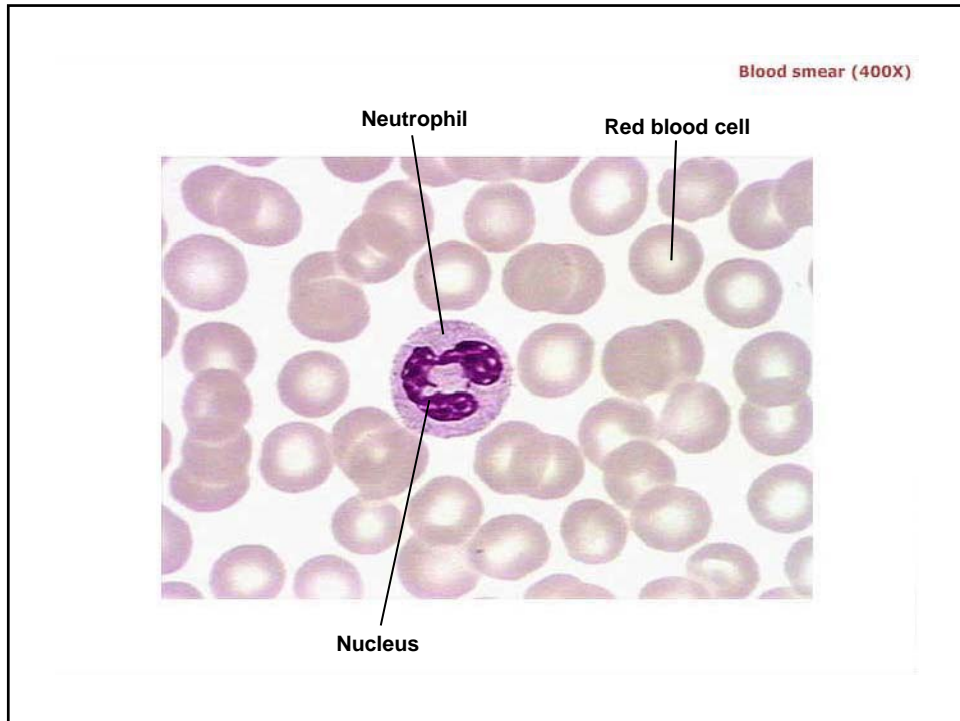


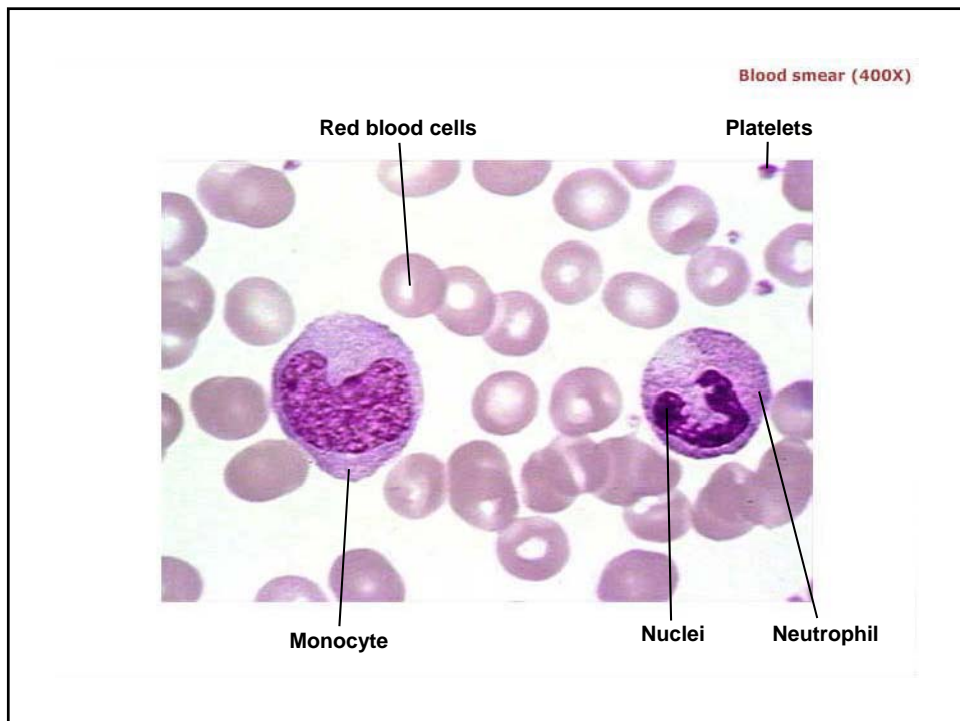
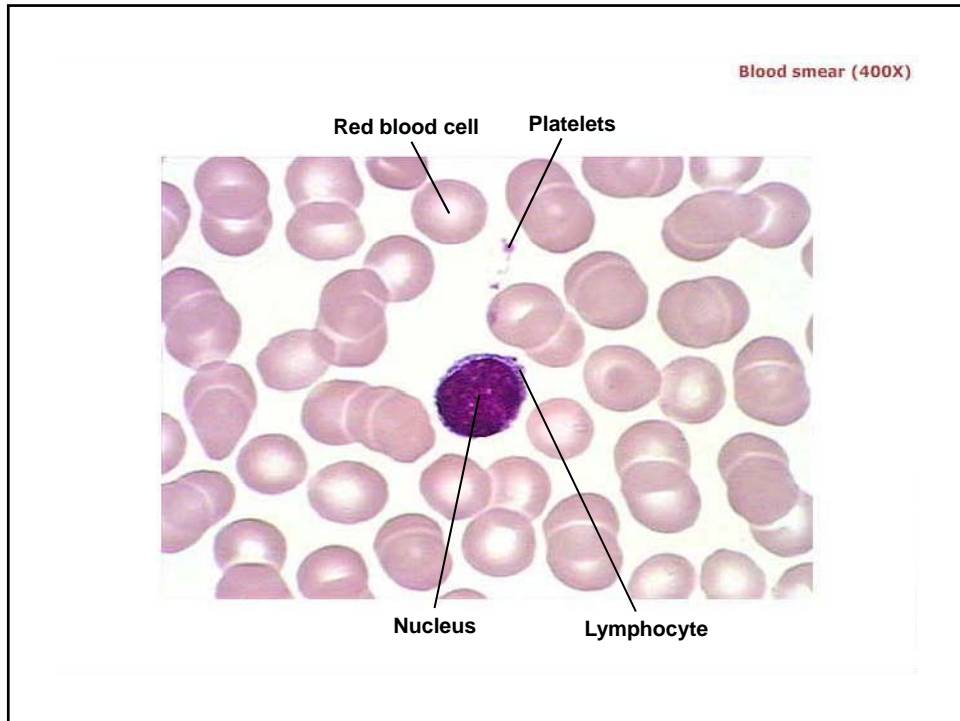


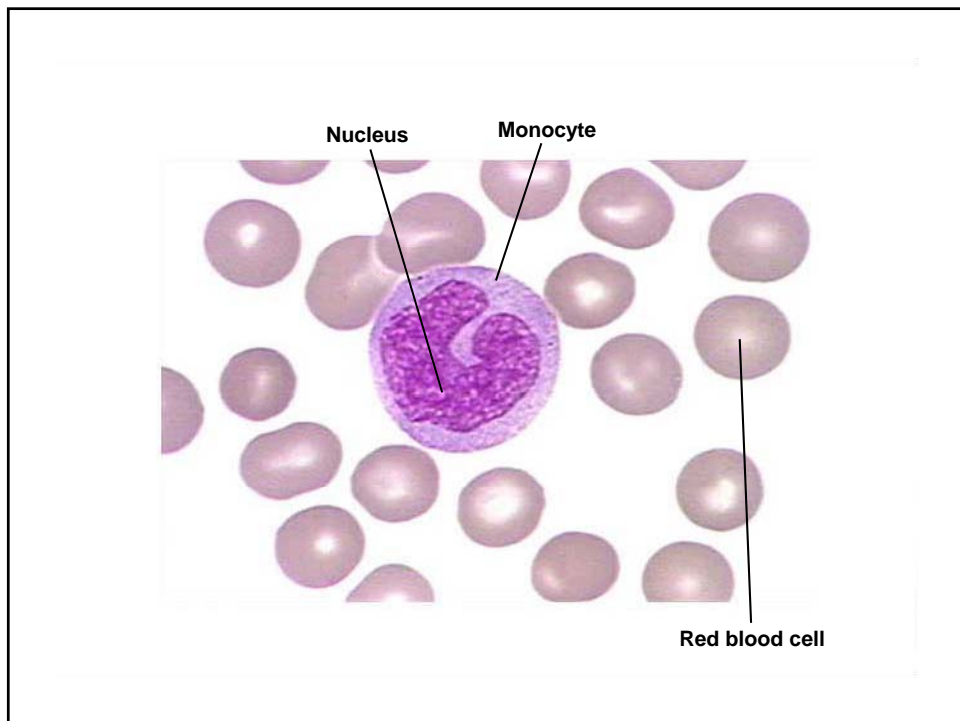
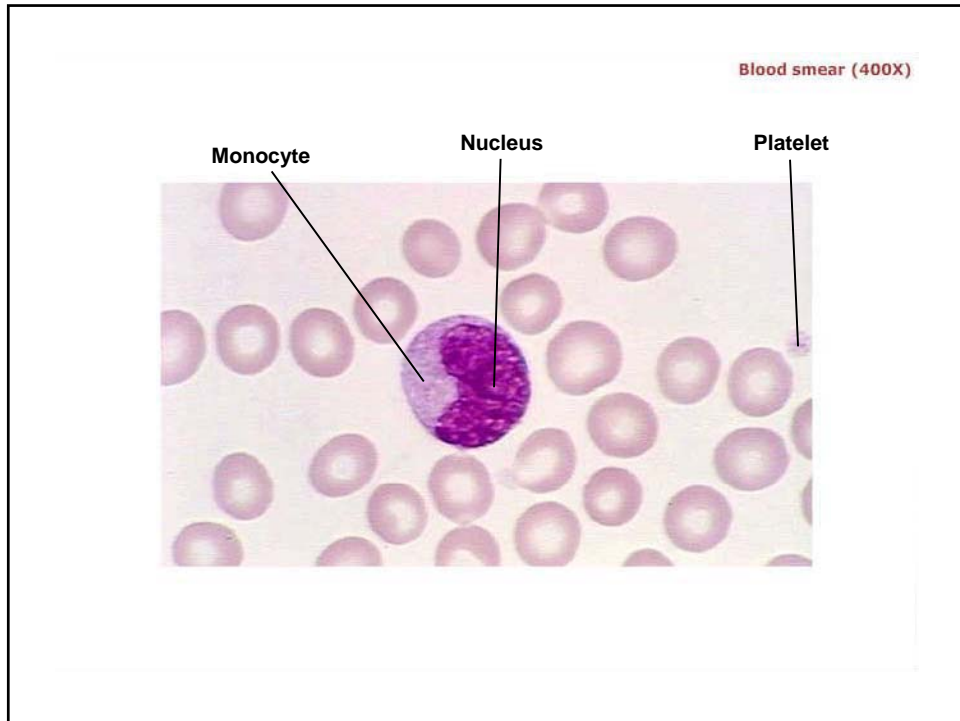


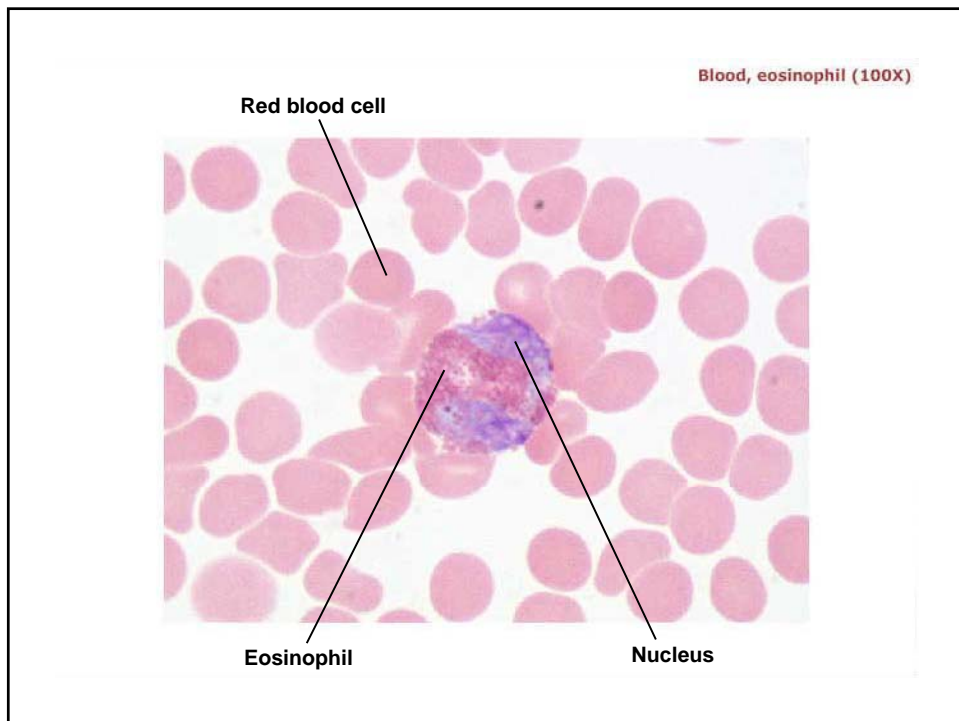
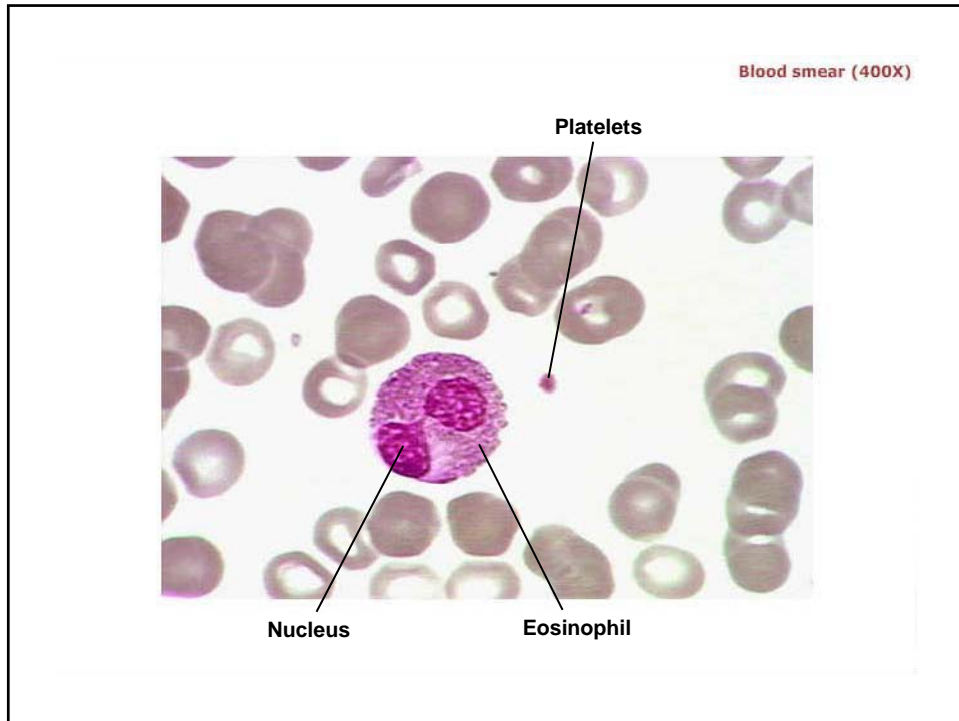


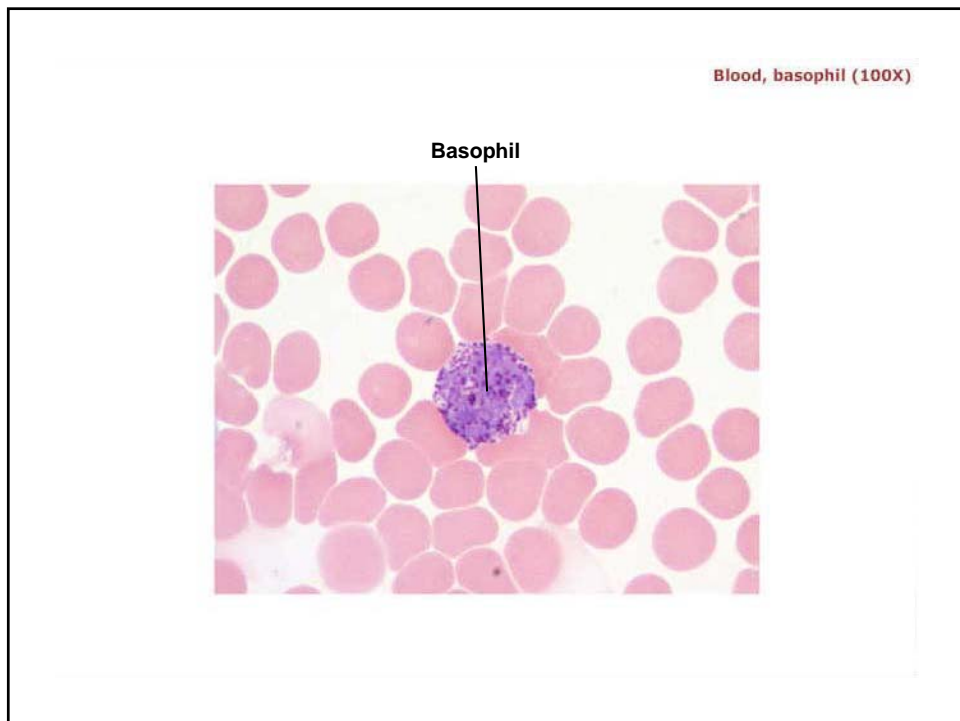
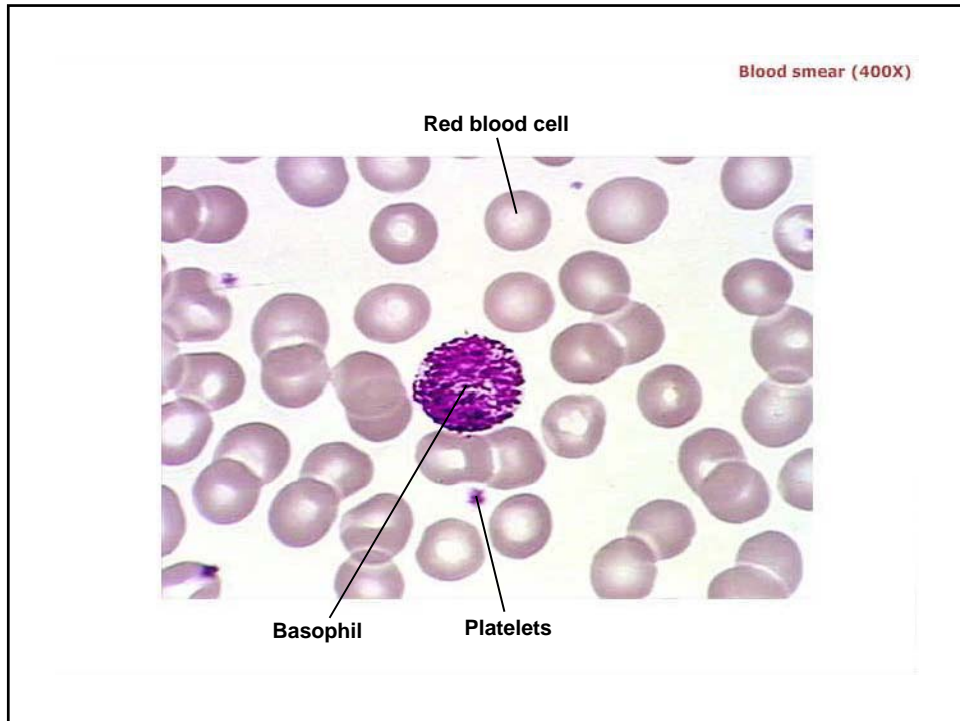


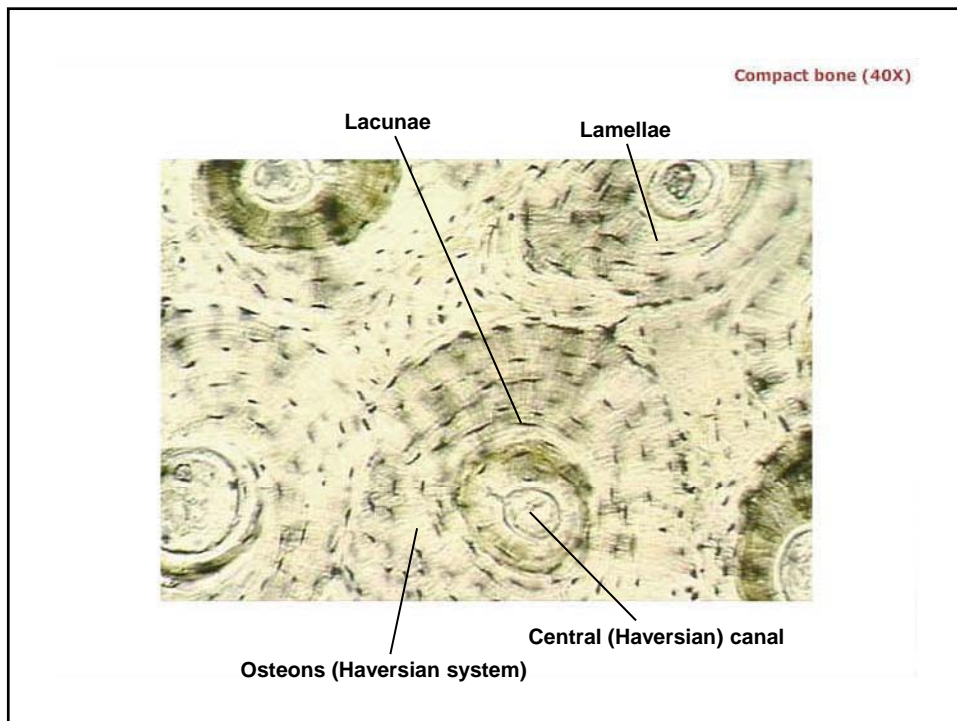
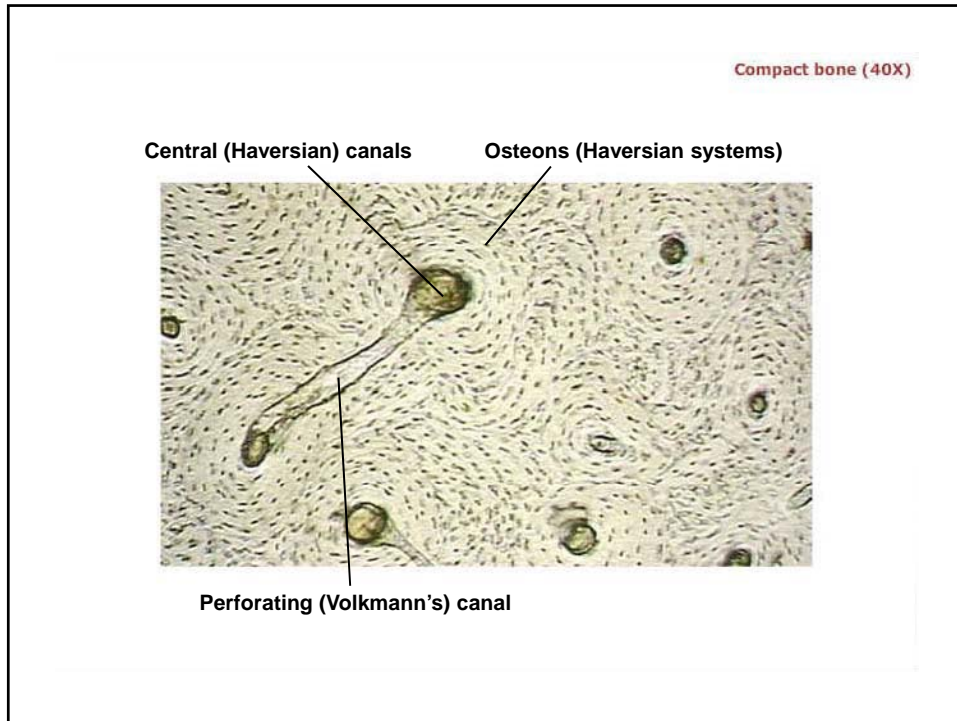


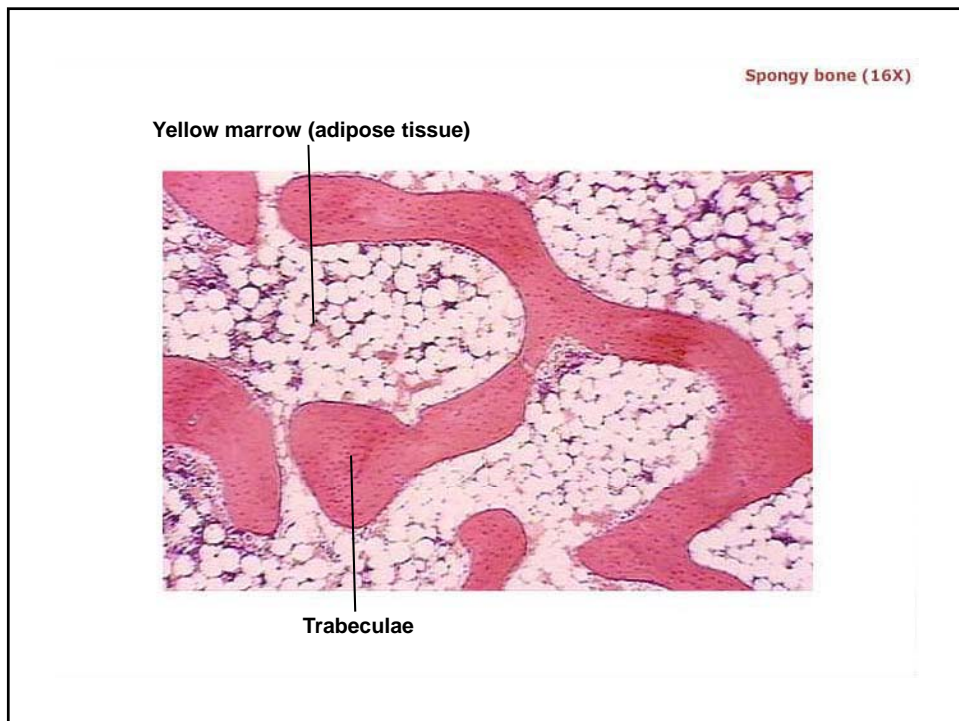
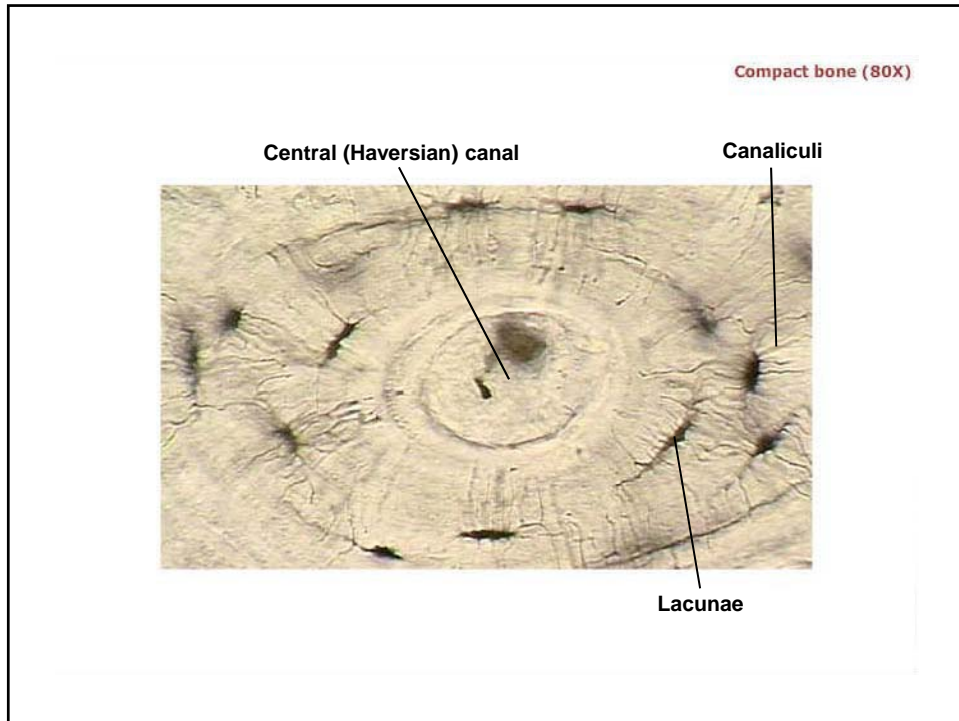


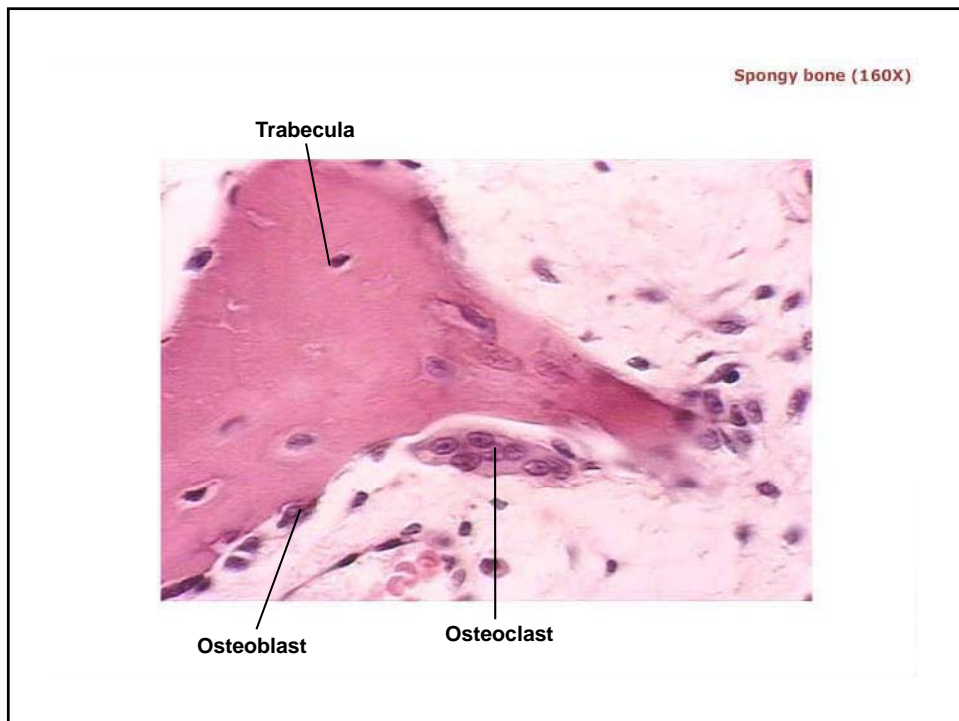
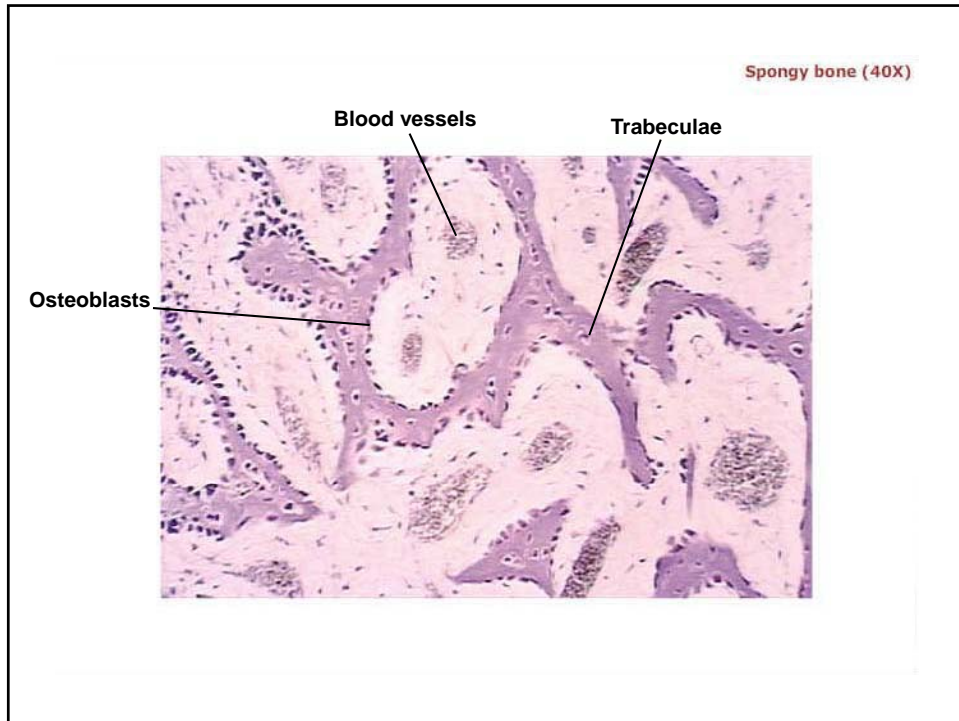


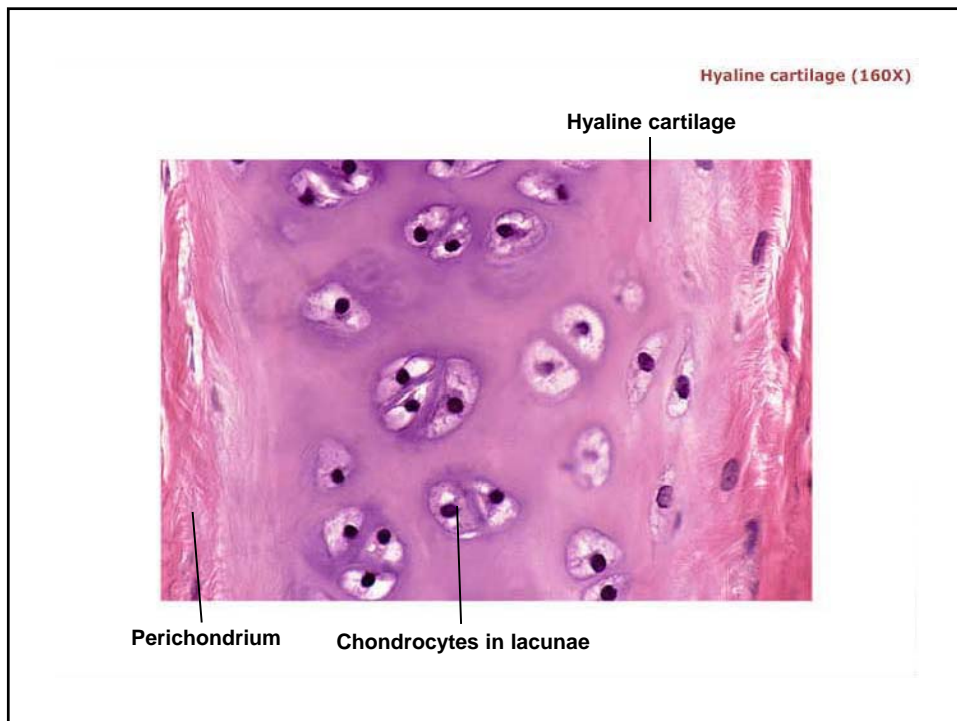
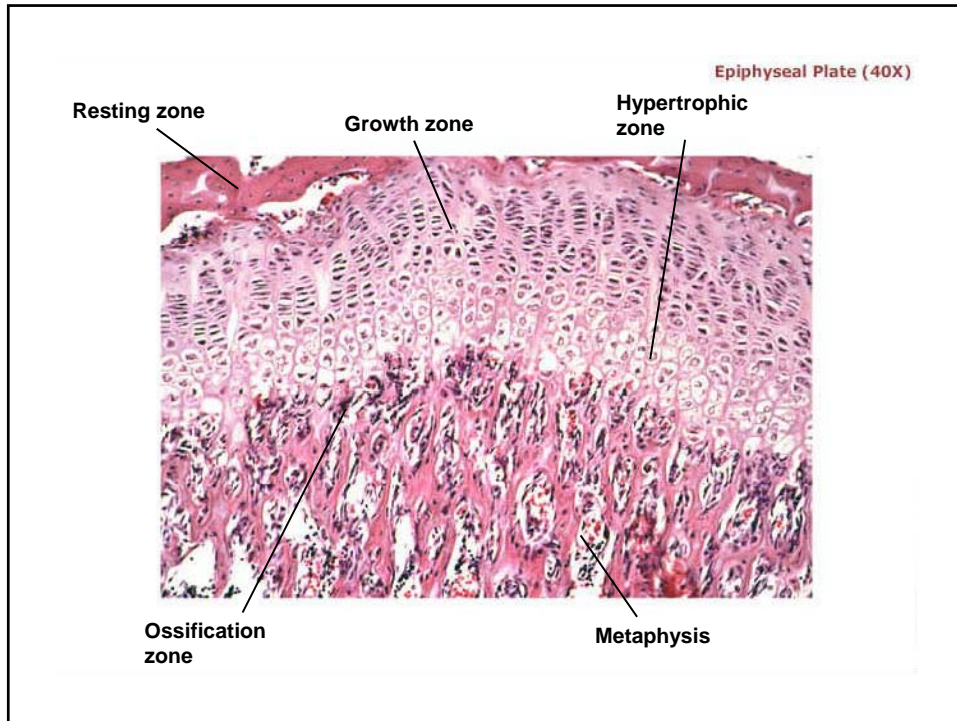


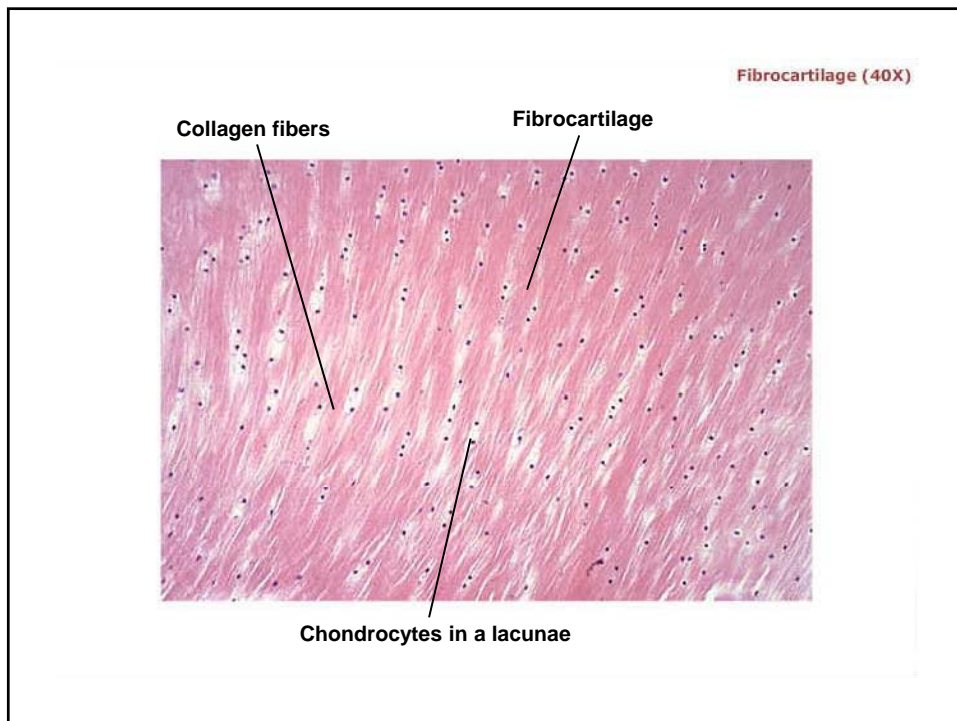
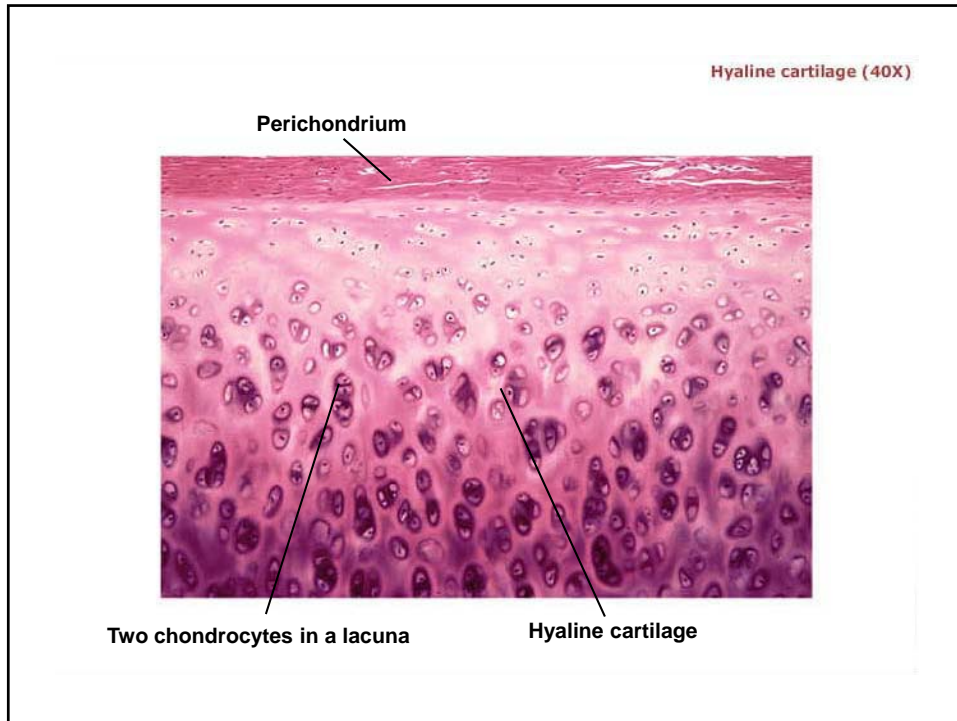


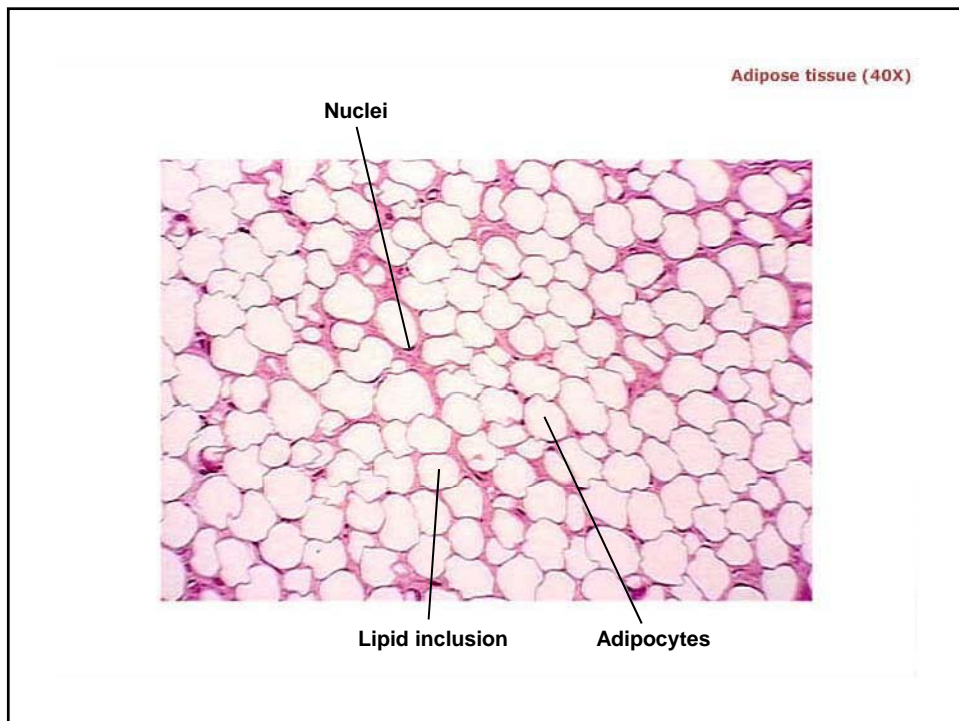
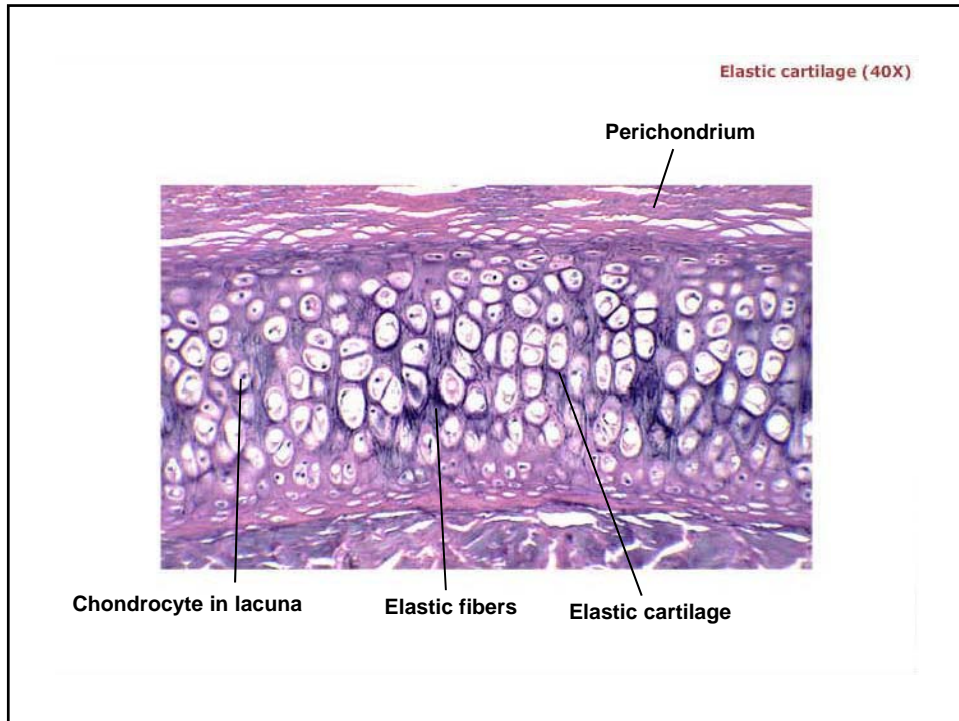


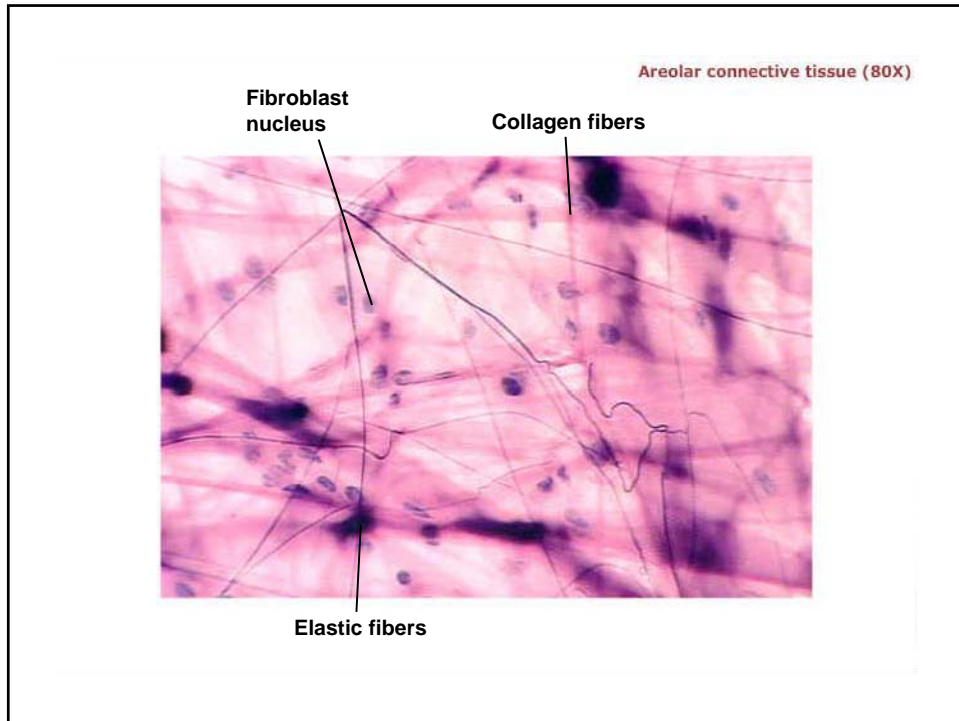




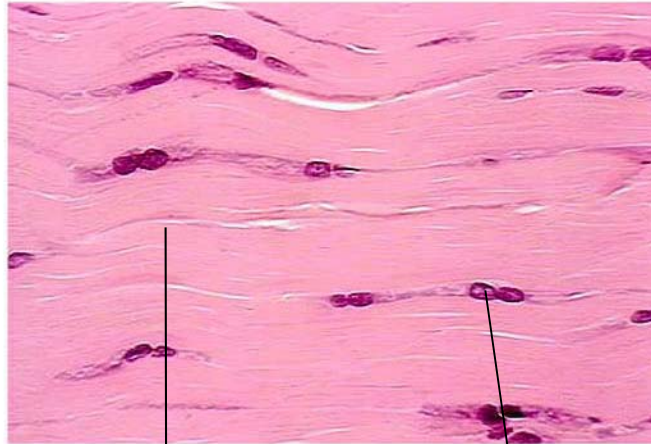








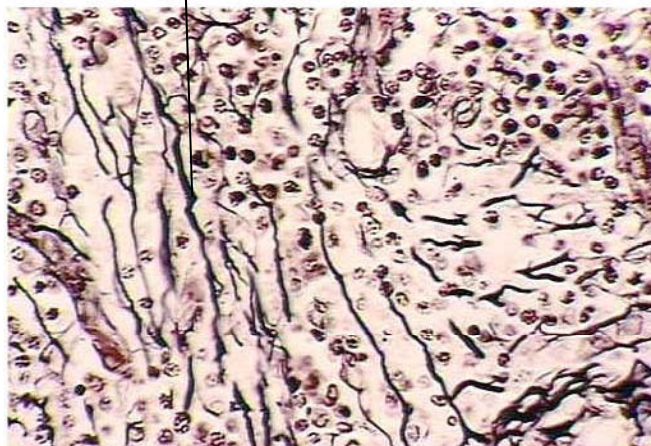
Dense regular connective tissue (160X)



Collagen fibers

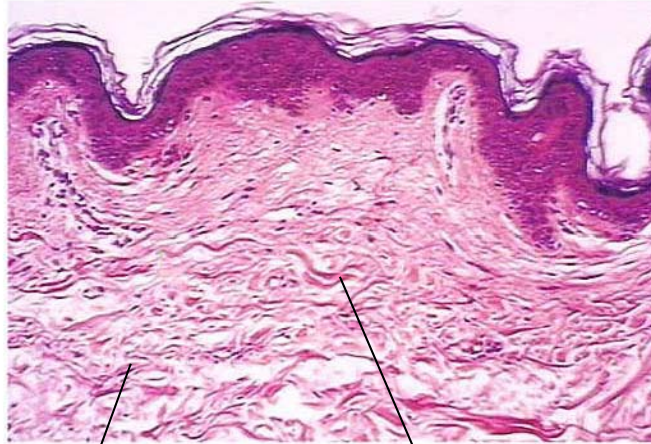
Fibroblast nuclei

Reticular connective tissue (160X)



Reticular fibers

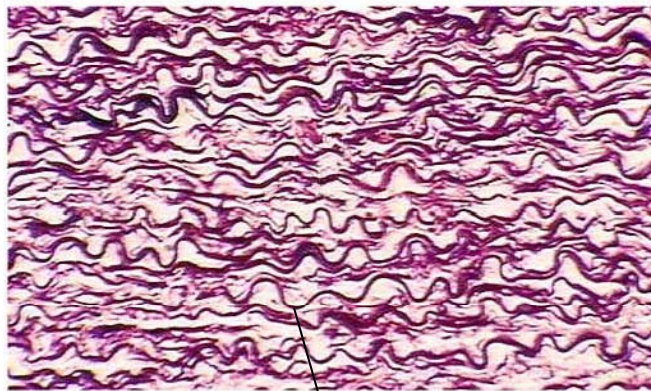
Dense irregular connective tissue, dermis (40X)



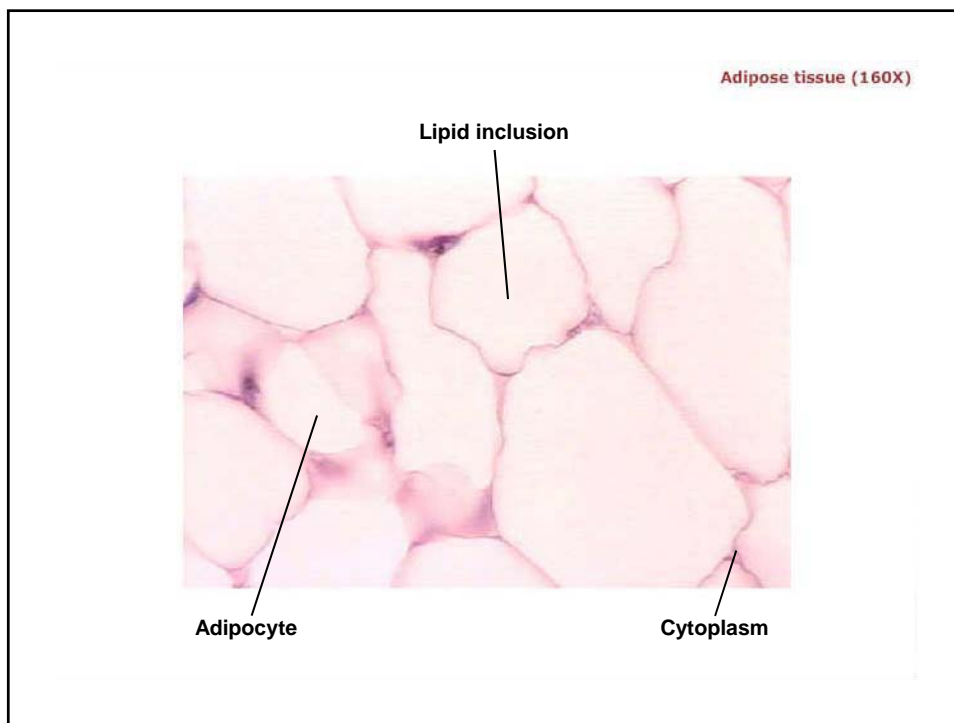
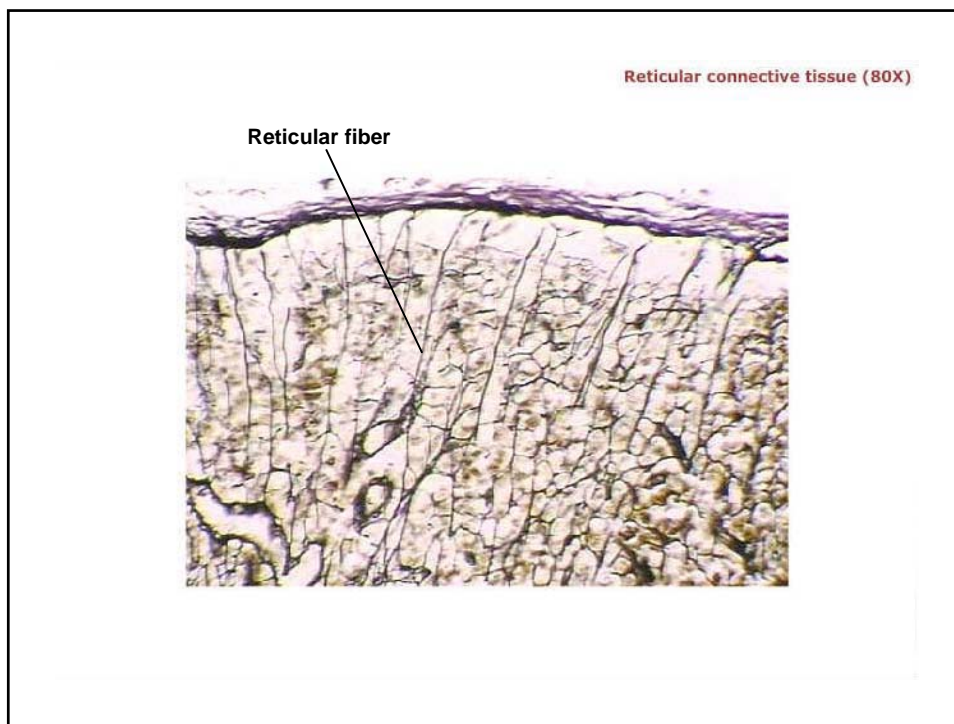
Dense irregular connective tissue

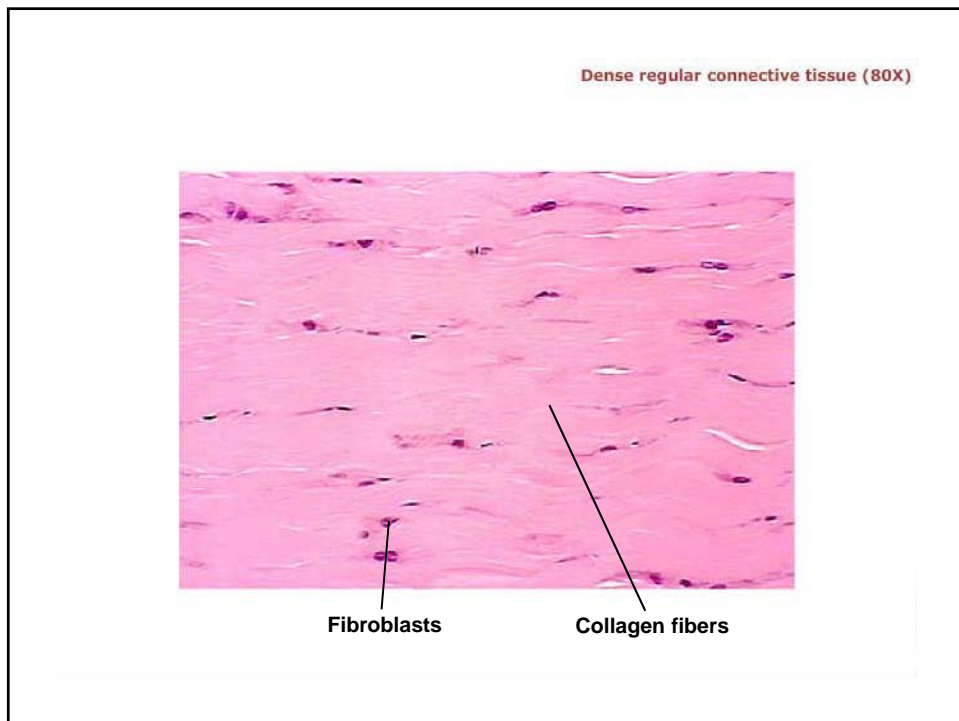
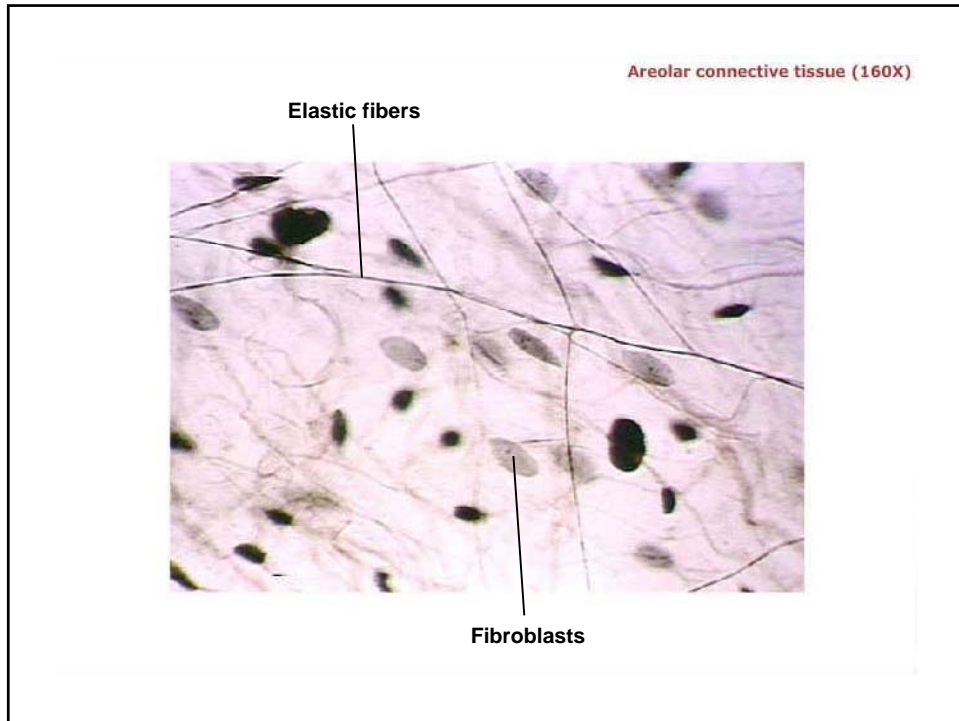
Collagen fibers

Elastic connective tissue, aorta (80X)

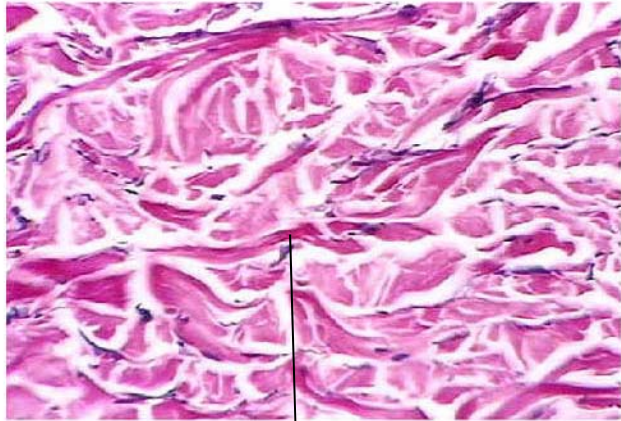


Elastic fibers



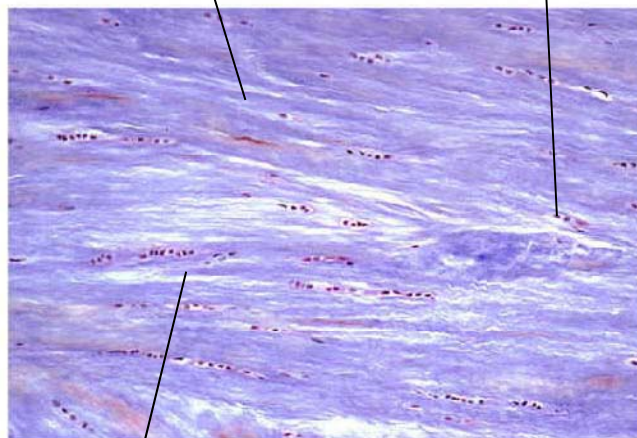


Dense irregular connective tissue, dermis (160X)



Collagen fibers

Fibrocartilage (40X)



Collagen fibers

Chondrocytes in lacunae

Fibrocartilage

