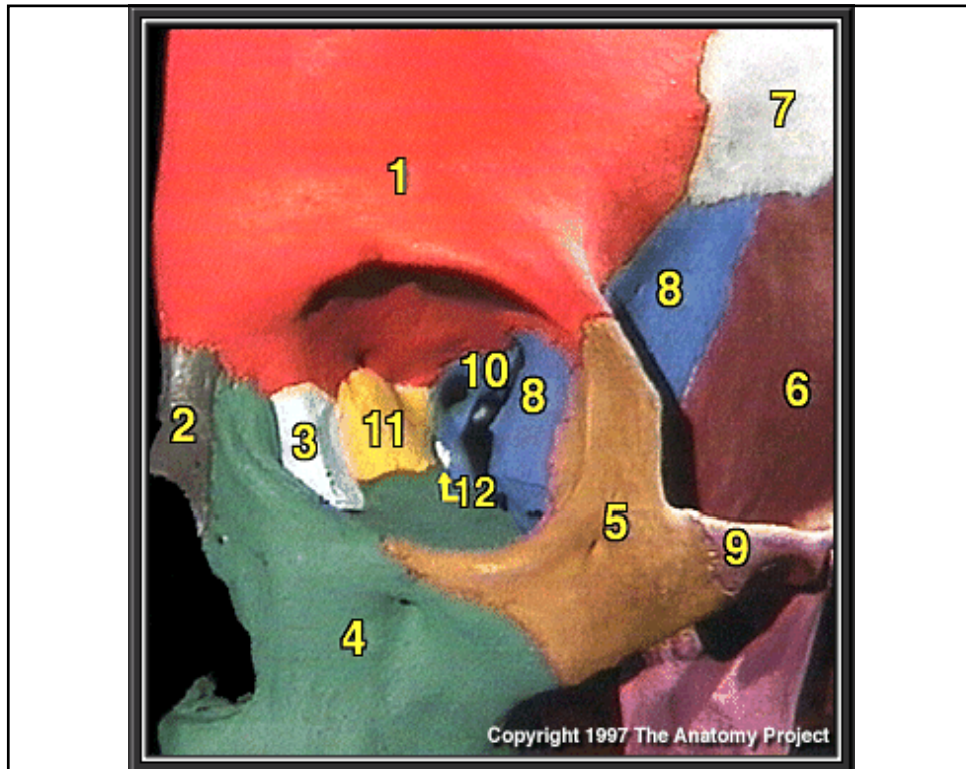
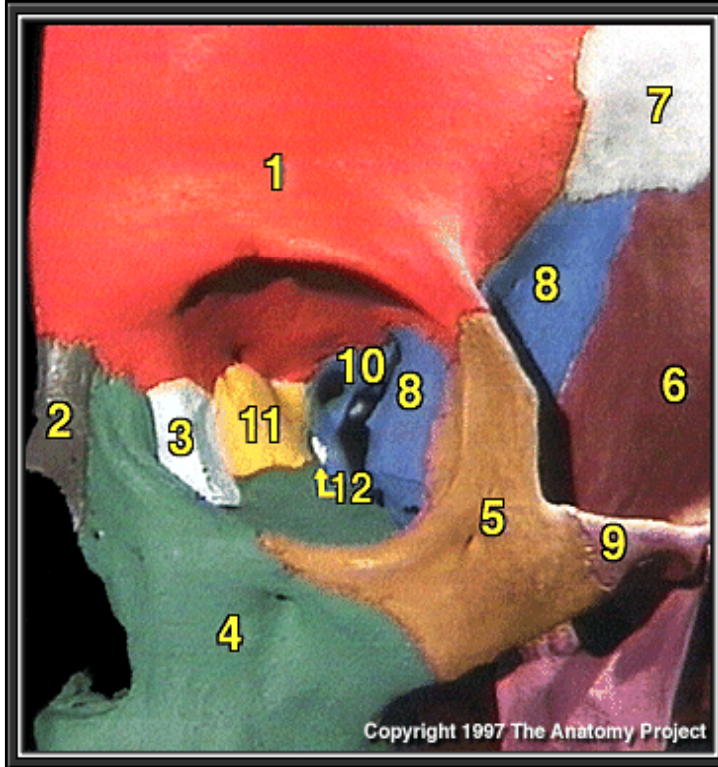


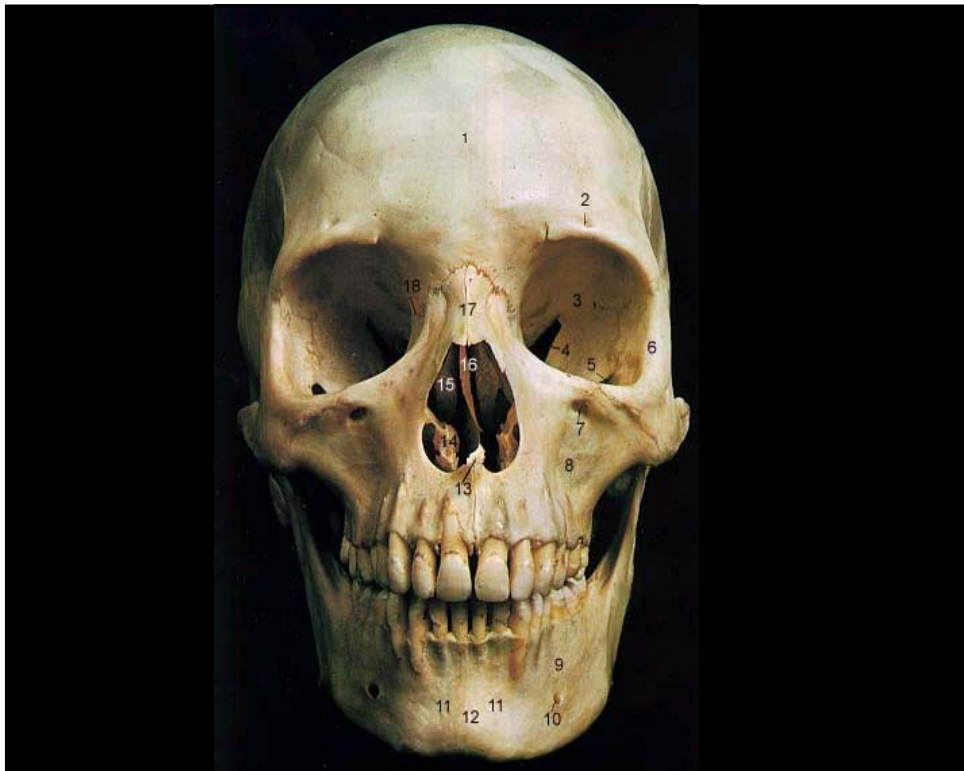
# Question

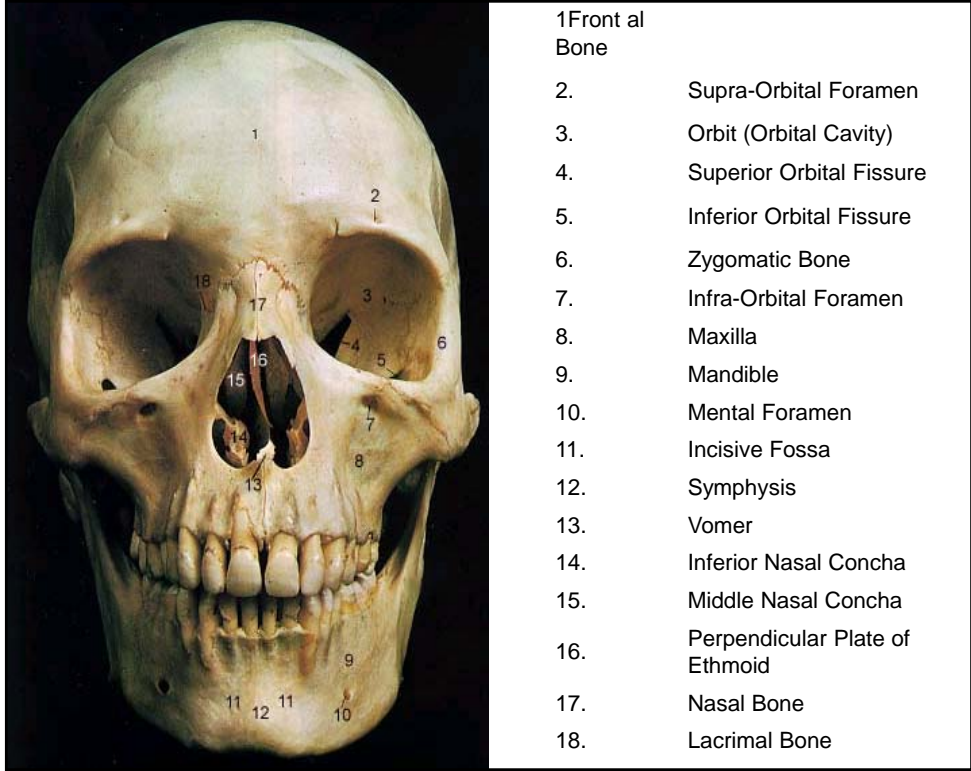




1. Frontal bone
2. Nasal bone
3. Lacrimal bone
4. Maxillary bone
5. Zygomatic bone
6. Temporal bone
7. Parietal bone
8. Greater wing of sphenoid bone
9. Zygomatic process of temporal bone
10. Lesser wing of sphenoid bone
11. Ethmoid bone
12. Palatine bone


Copyright 1997 The Anatomy Project







1	<b>Parietal Bone</b>	
2.	<b>Coronal Suture</b>	
3.	<b>Frontal Bone</b>	
4.	<b>Nasal Bone</b>	
5.	<b>Vomer</b>	
6.	<b>Lacrimal Bone</b>	
7.	<b>Orbital Part of Ethmoid</b>	
8.	<b>Zygomatic Bone</b>	
9.	<b>Maxilla</b>	
10.	<b>Body of Mandible</b>	
11.	<b>Ramus of Mandible</b>	
12.	<b>Coronoid Process</b>	
13.	<b>Mandibular Condyle</b>	
14.	<b>Mental Foramen</b>	
15.	<b>Styloid Process</b>	
16.	<b>External Acoustic Meatus</b>	



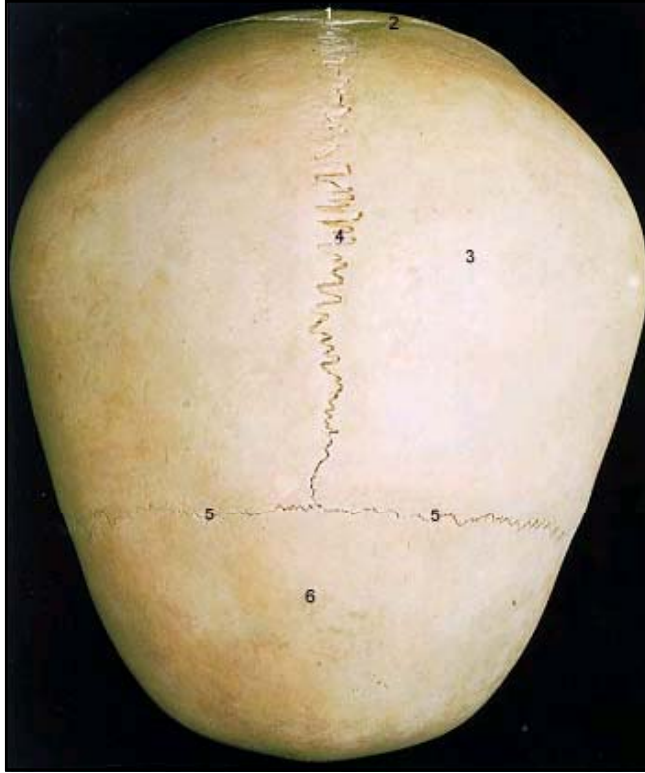
18.	Zygomatic Process
19.	Temporal Bone
20.	Greater Wing of Sphenoid
21.	Inferior Temporal Line
22.	Superior Temporal Line
23.	Squamosal Suture
24.	Lambdoidal Suture
25.	Occipital Bone



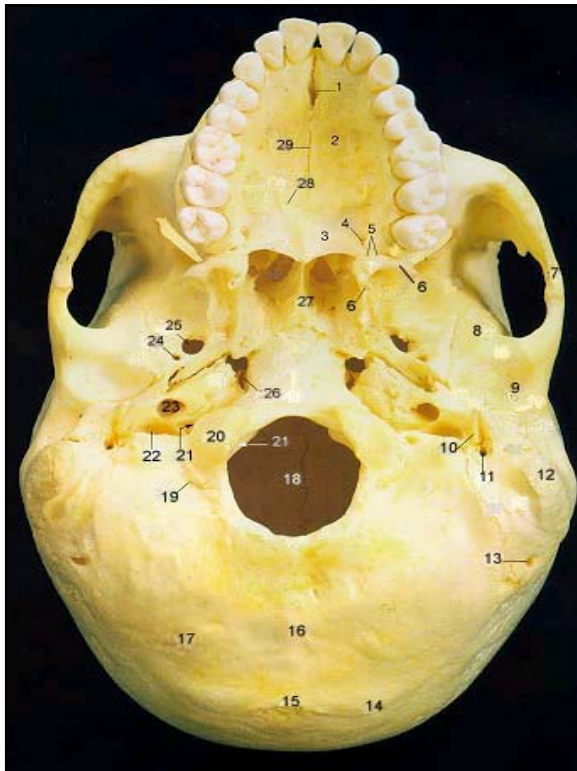


1. Parietal Bone
2. Sagittal Suture
3. Lambdoid Suture
4. Occipital Bone
5. External Occipital Protruberance
6. Superior Nuchal Line
7. Inferior Nuchal Line

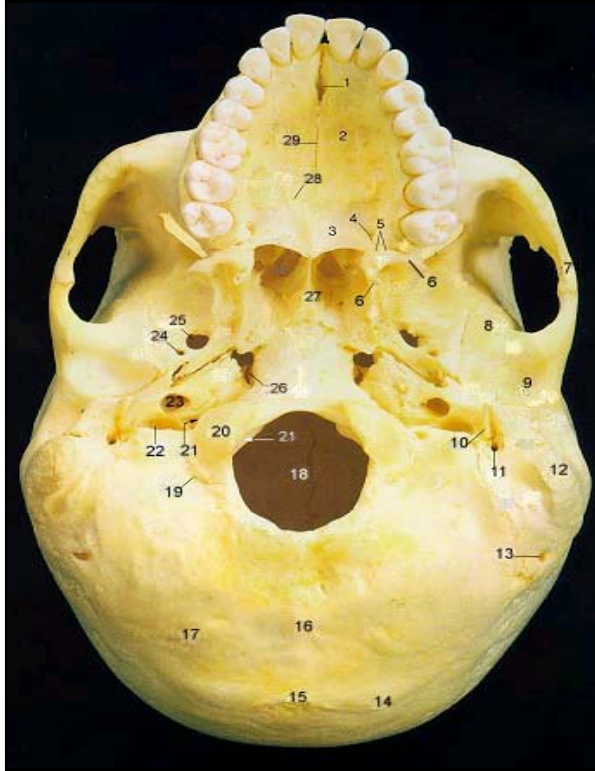




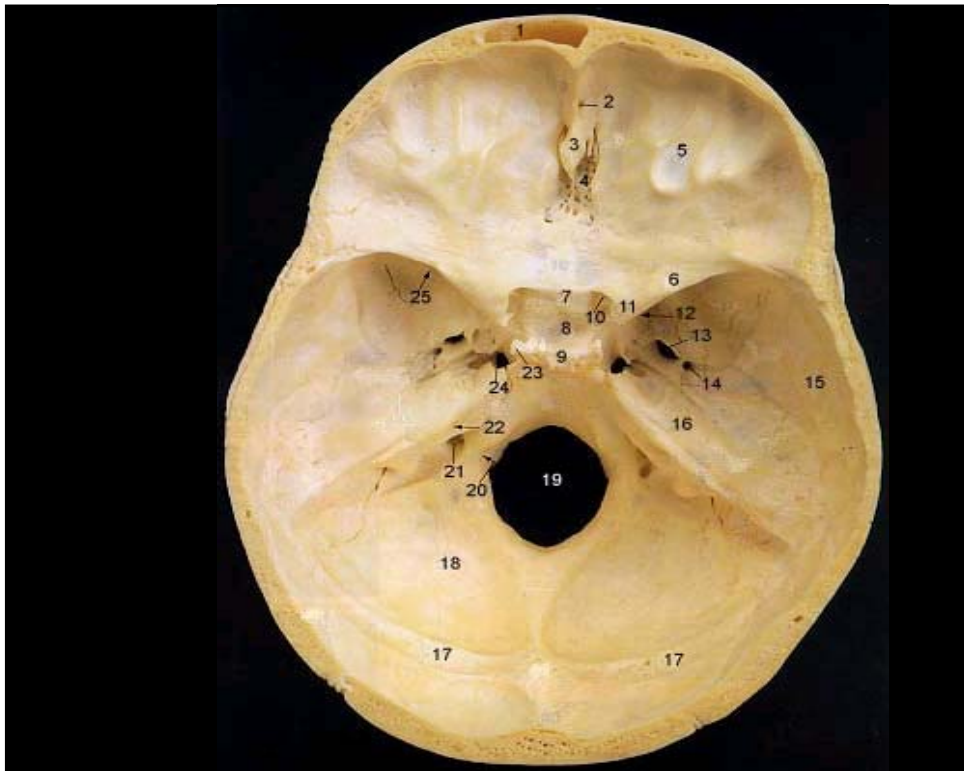
1. Occipital Bone
2. Lambdoidal Suture
3. Parietal Bone
4. Sagittal Suture
5. Coronal Suture
6. Frontal Bone



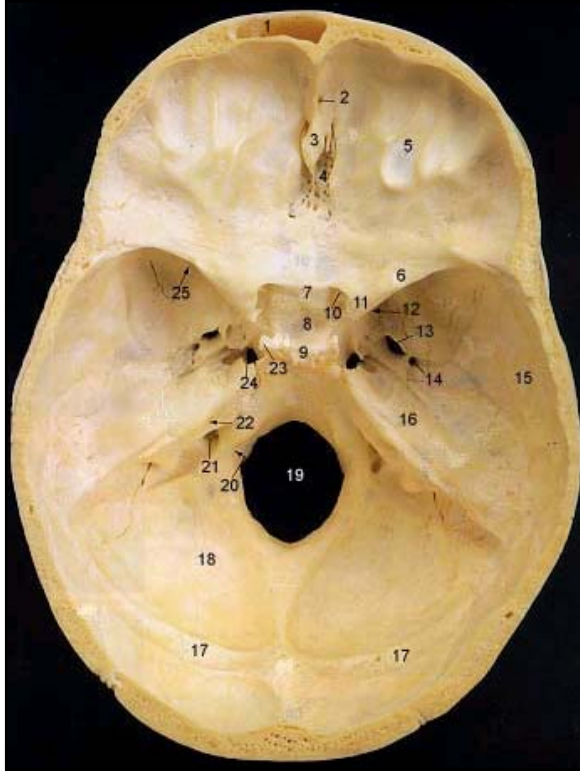
1. Anterior Palatine Foramen
2. Palatine Process of Maxilla
3. Palatine
4. Greater Palatine Foramen
5. Lesser Palatine Foramen
6. Pterygoid Processes of Sphenoid
7. Zygomatic Process
8. Squamous Part of Temporal Bone
9. Mandibular Fossa
10. Styloid Process
11. Stylomastoid Foramen
12. Mastoid Process
13. Mastoid Foramen
14. Superior Nuchal Line
15. External Occipital Protruberance
16. Median Nuchal Line
17. Inferior Nuchal Line
18. Foramen Magnum
19. Condylod Canal
20. Occipital Condyle
21. Hypoglossal Canal
22. Jugular Foramen



- 23. Carotid Canal
- 24. Foramen Spinosum
- 25. Foramen Ovale
- 26. Foramen Lacerum
- 27. Vomer
- 28. Transverse Palatine Suture
- 29. Median Palatine Suture



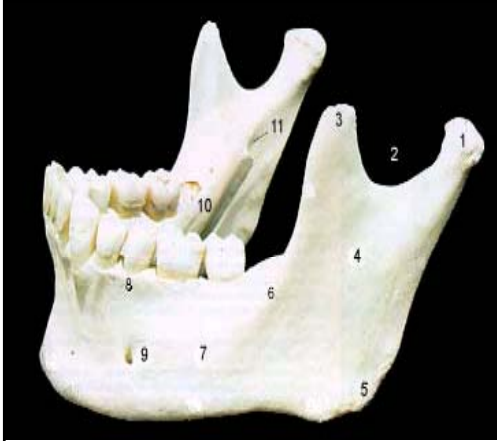




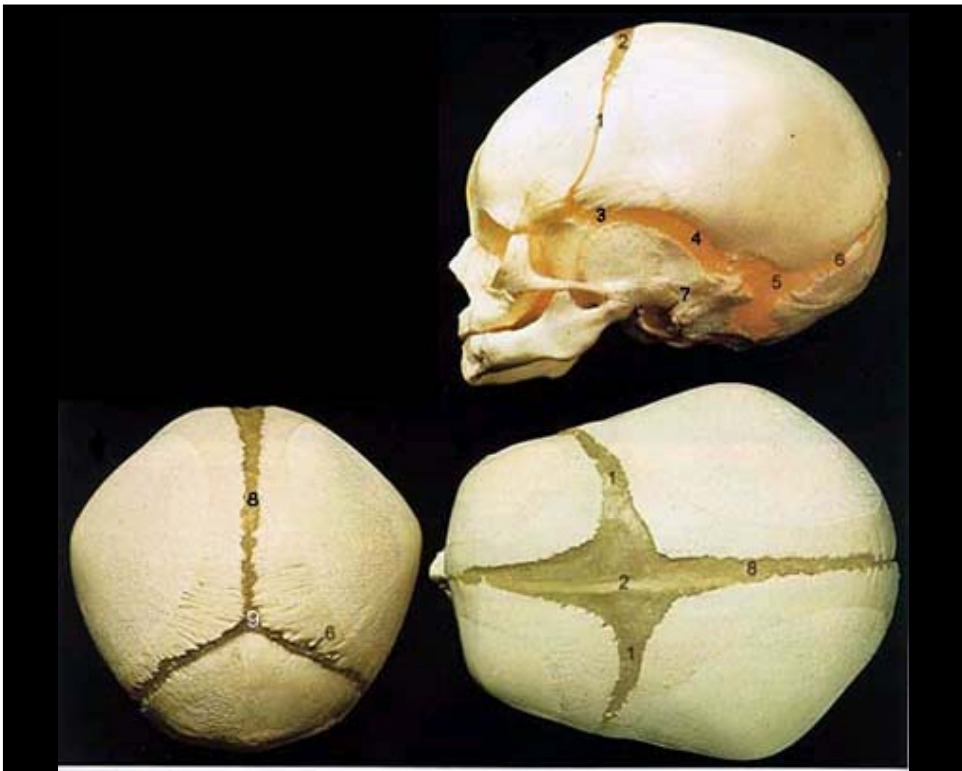
1. Frontal Sinus
2. Foramen Cecum
3. Crista Galli
4. Cribriform Plate
5. Anterior Cranial Fossa
6. Lesser Wing of Sphenoid
7. Chiasmatic Groove
8. Hypophyseal Fossa
9. Dorsum Sella
10. Optic Canal
11. Anterior Clinoid Process
12. Foramen Rotundum
13. Foramen Ovale
14. Foramen Spinosum
15. Squamous Part of Temporal
16. Petrous Part of Temporal
17. Groove for Transverse Sinus
18. Posterior Cranial Fossa
19. Foramen Magnum

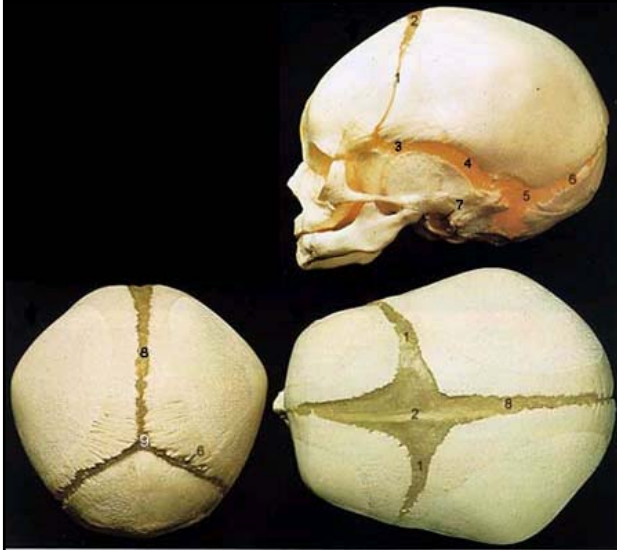




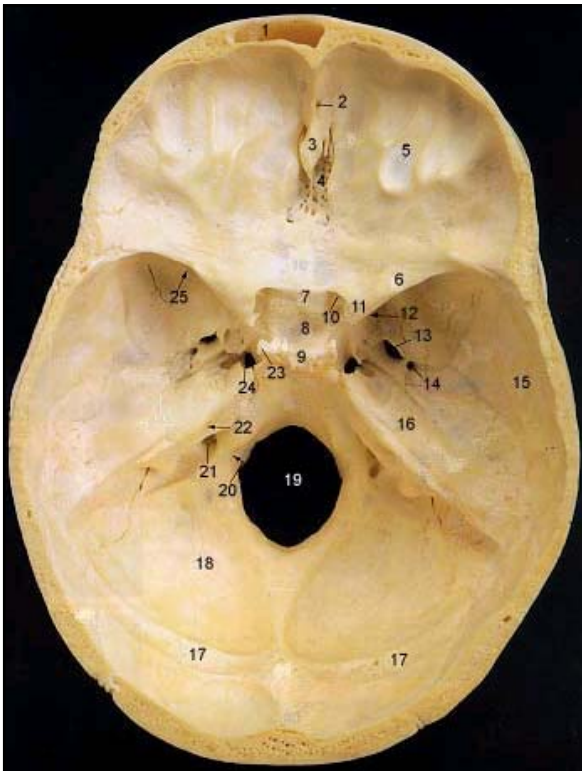


1. Mandibular Condyle
2. Mandibular Notch
3. Coronoid Process
4. Ramus
5. Angle
6. Oblique Line
7. Body
8. Alveolar Process
9. Mental Foramen
10. Mylohyoid Line
11. Mandibular Foramen





1. Future Coronal Suture
2. Anterior Fontanel
3. Anterolateral Fontanel
4. Future Squamosal Suture
5. Posterolateral Fontanel
6. Future Lamdoidal Suture
7. External Acoustic Meatus
8. Future Sagittal Suture
9. Posterior Fontanel



20. Hypoglossal Canal
21. Jugular Foramen
22. Internal Acoustic Meatus
23. Posterior Clinoid Process
24. Foramen Lacerum
25. Superior Orbital Fissure