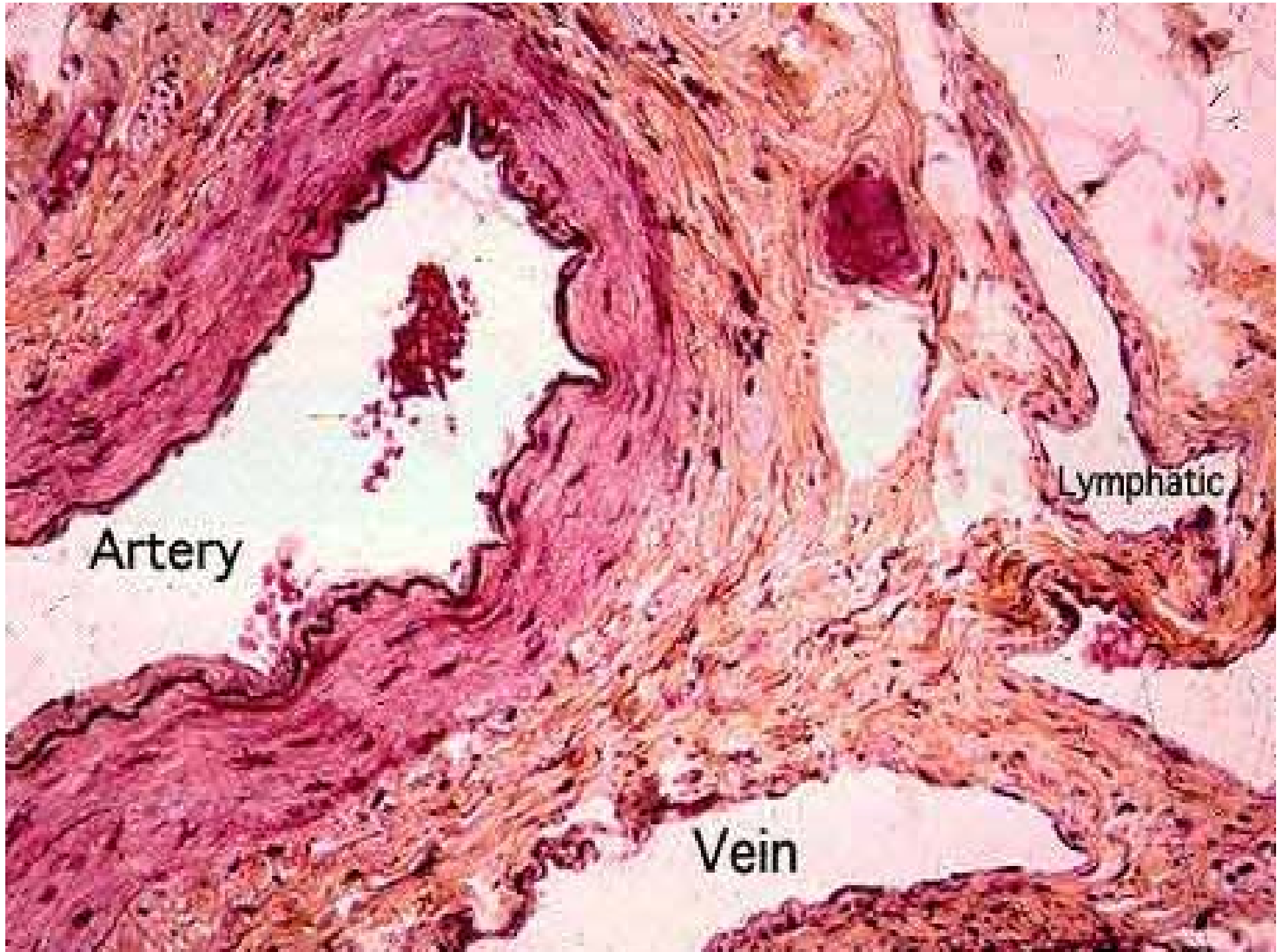


# Tissue review2

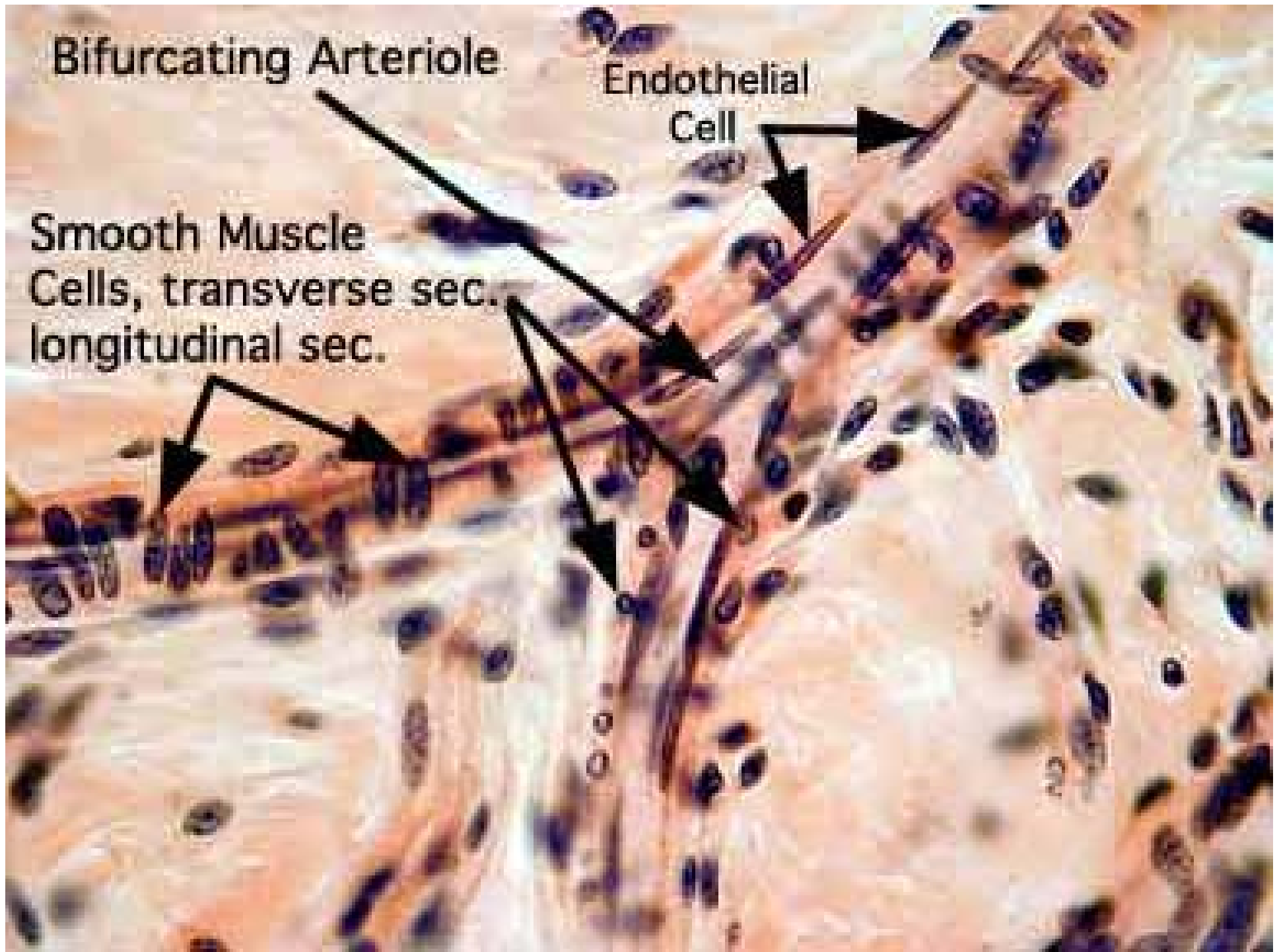
dh

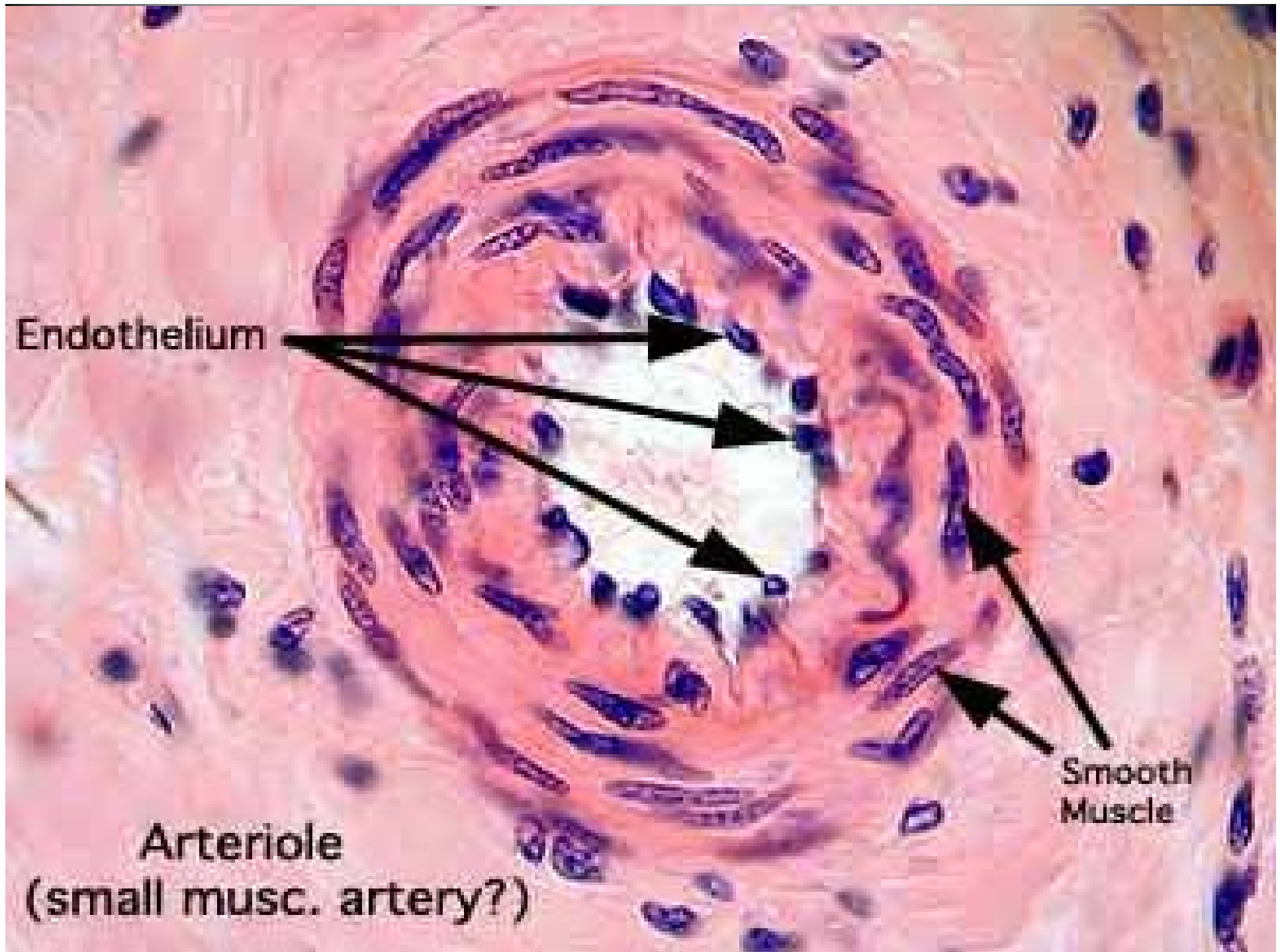


Artery

Lymphatic

Vein

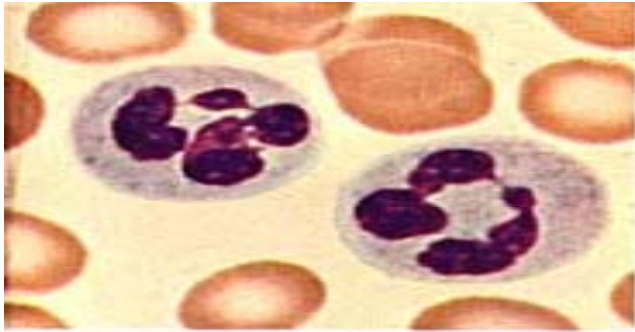




Endothelium

Smooth  
Muscle

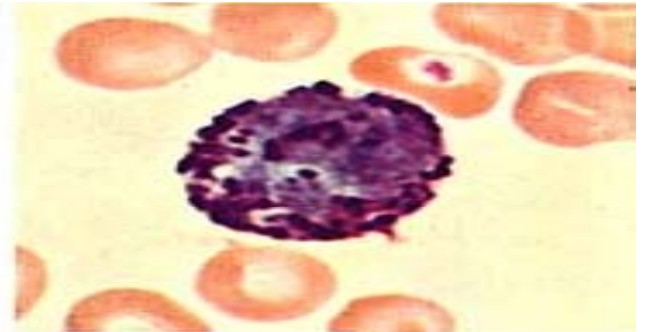
Arteriole  
(small musc. artery?)



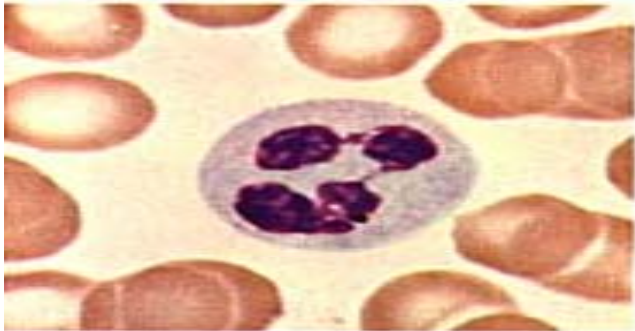
A



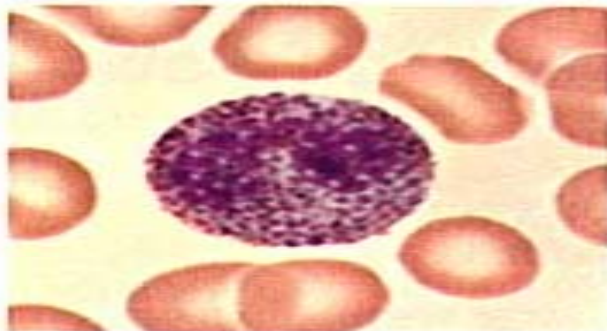
B



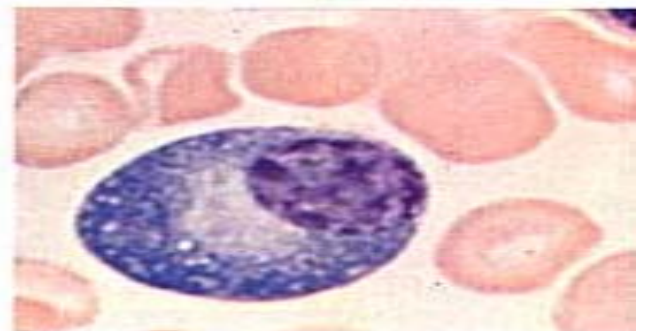
C



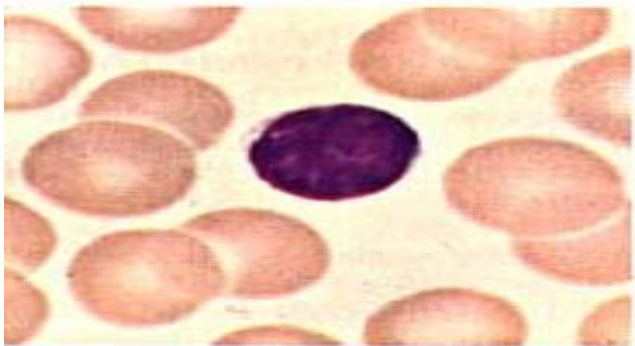
D



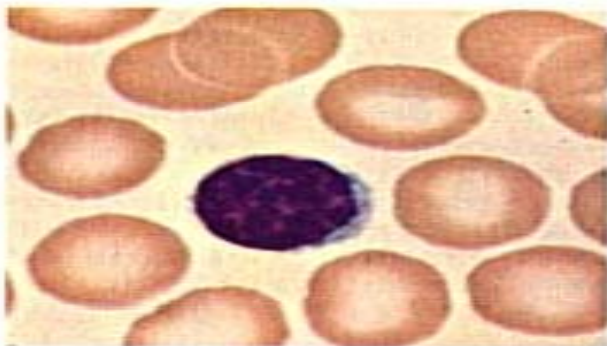
E



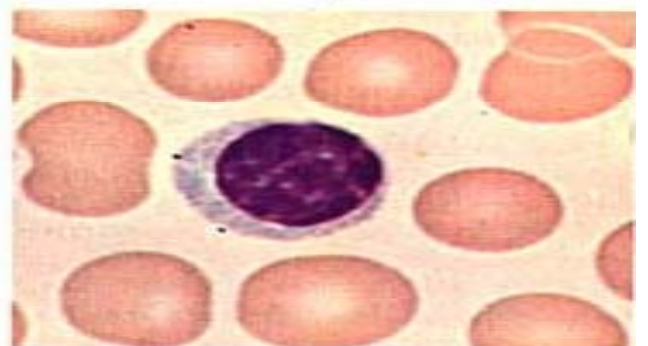
F



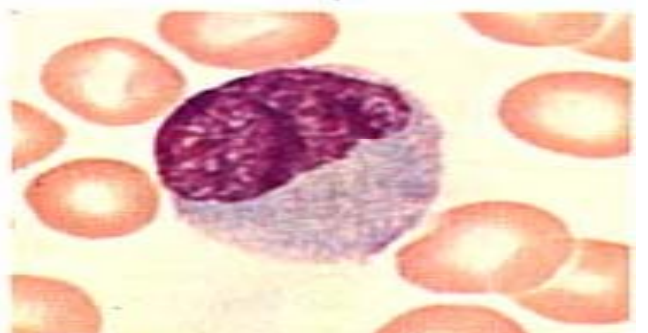
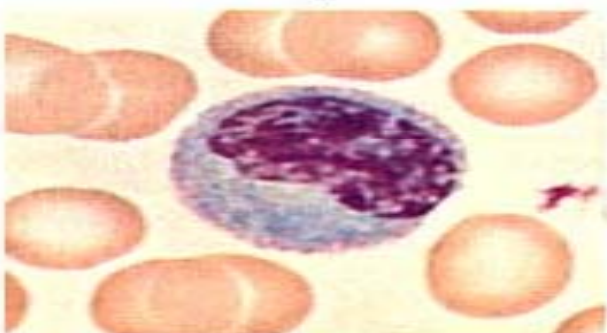
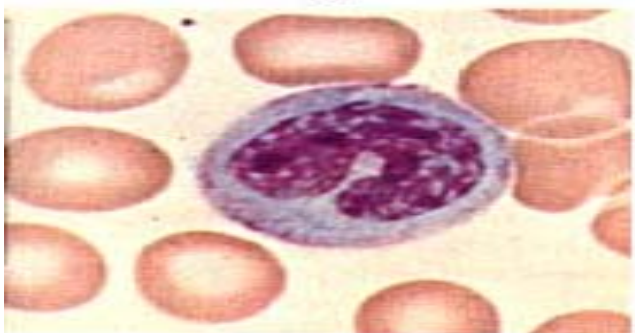
G



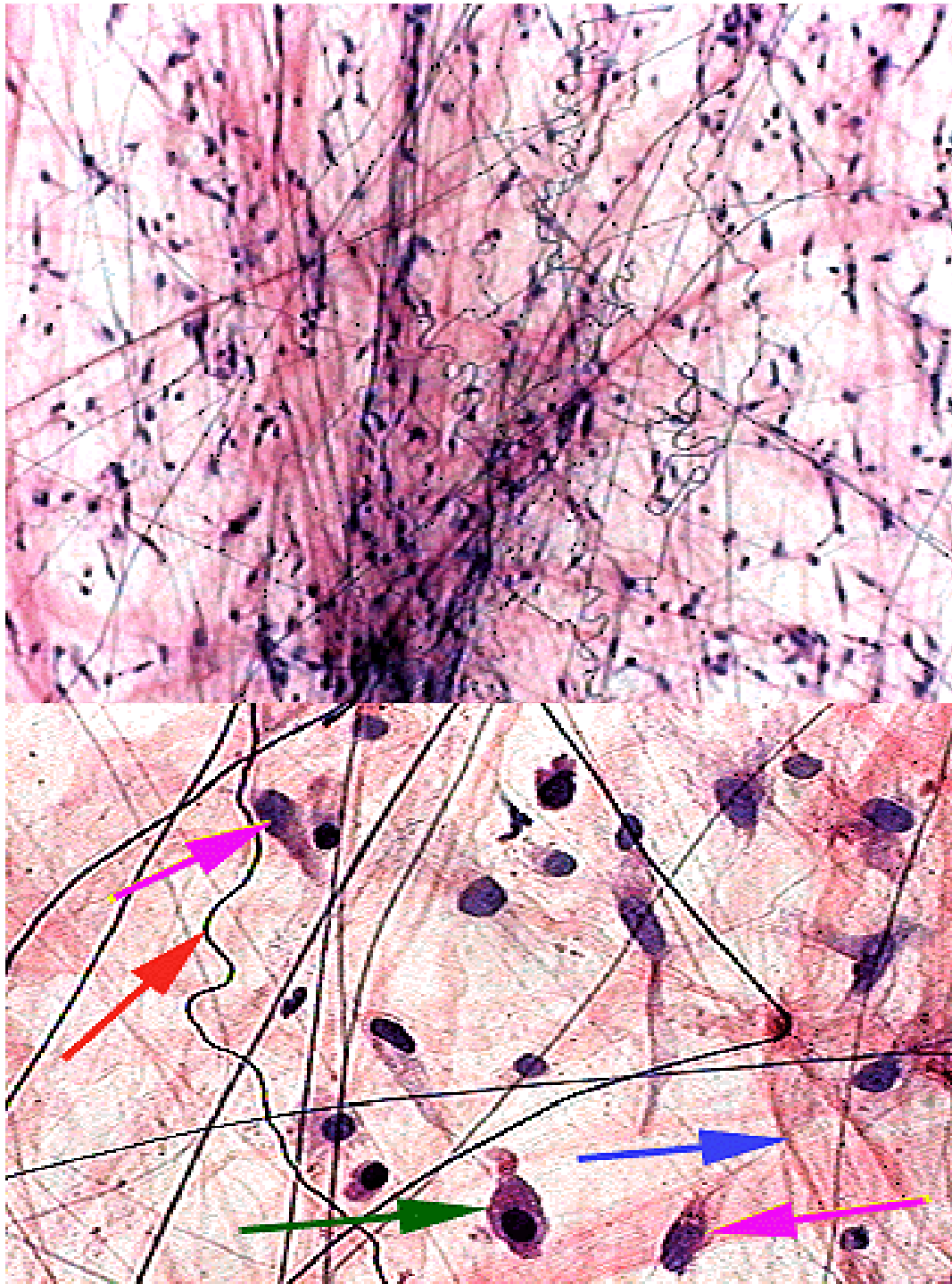
H



I

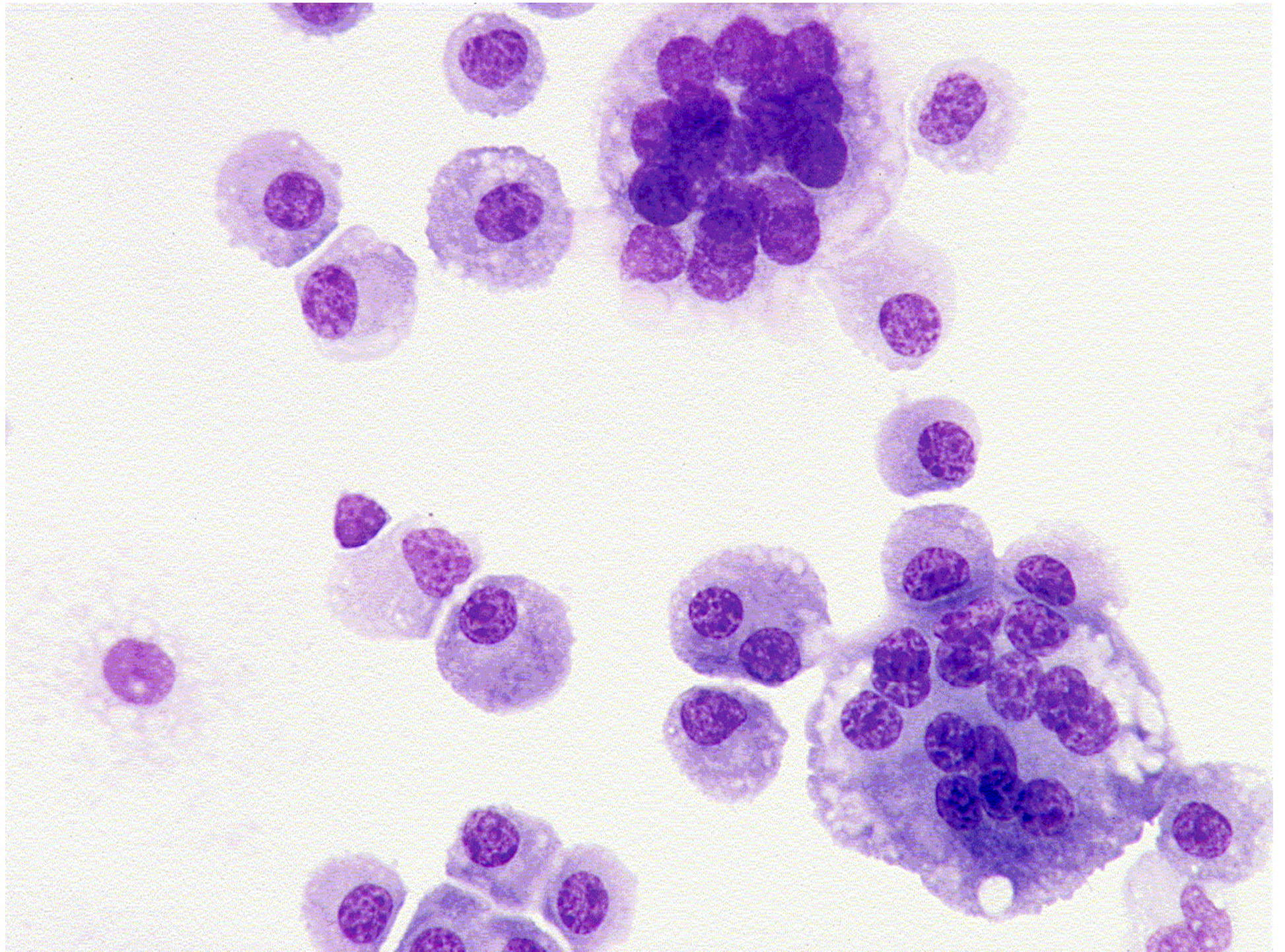






Fibroblasts - - Magenta arrow  
Elastic fibers - - Red/Orange arrow  
Macrophages - - Green arrow  
Collagen - - Blue arrow





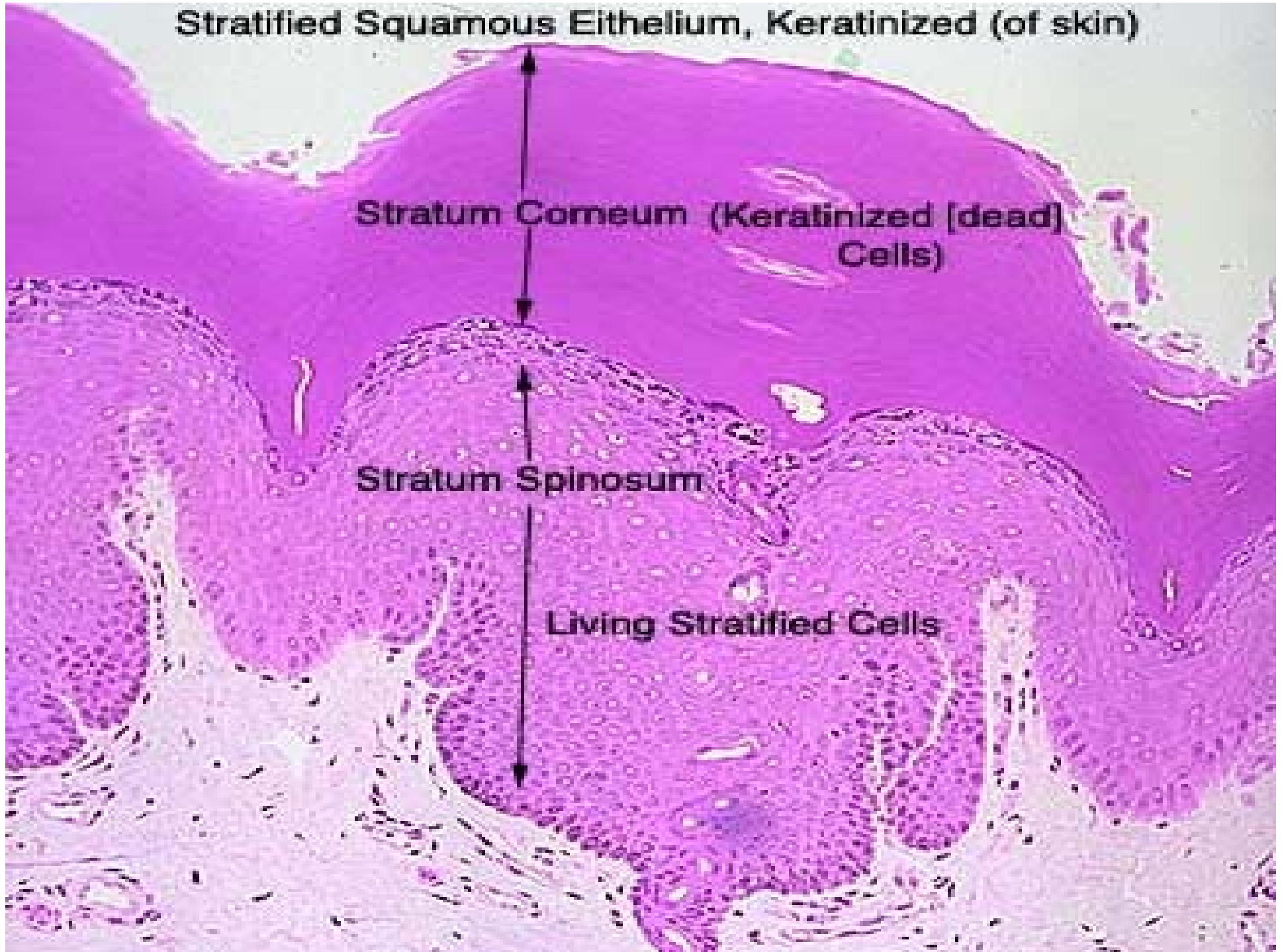


# Stratified Squamous Eithelium, Keratinized (of skin)

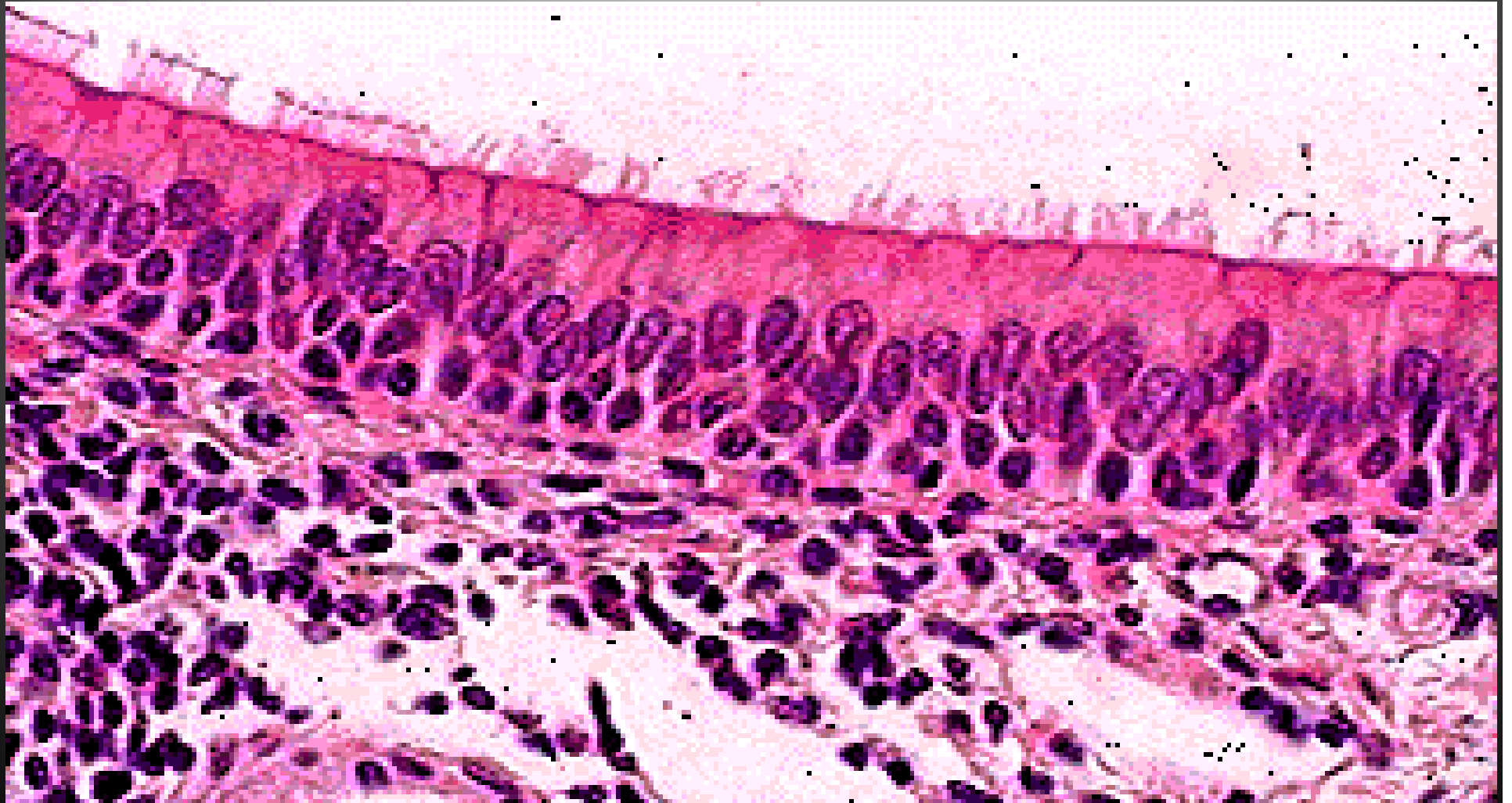
Stratum Comeum (Keratinized [dead] Cells)

Stratum Spinosum

Living Stratified Cells

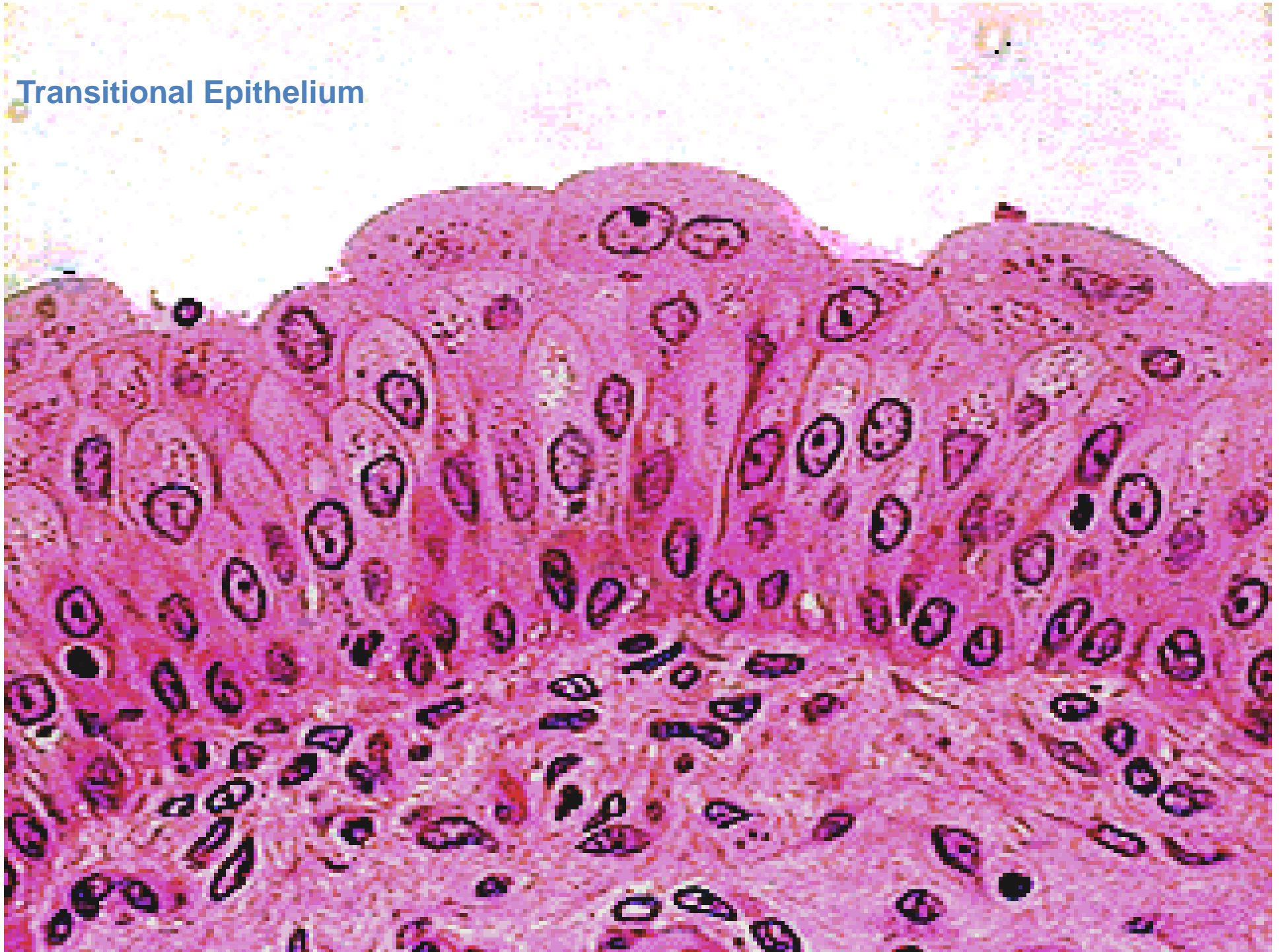


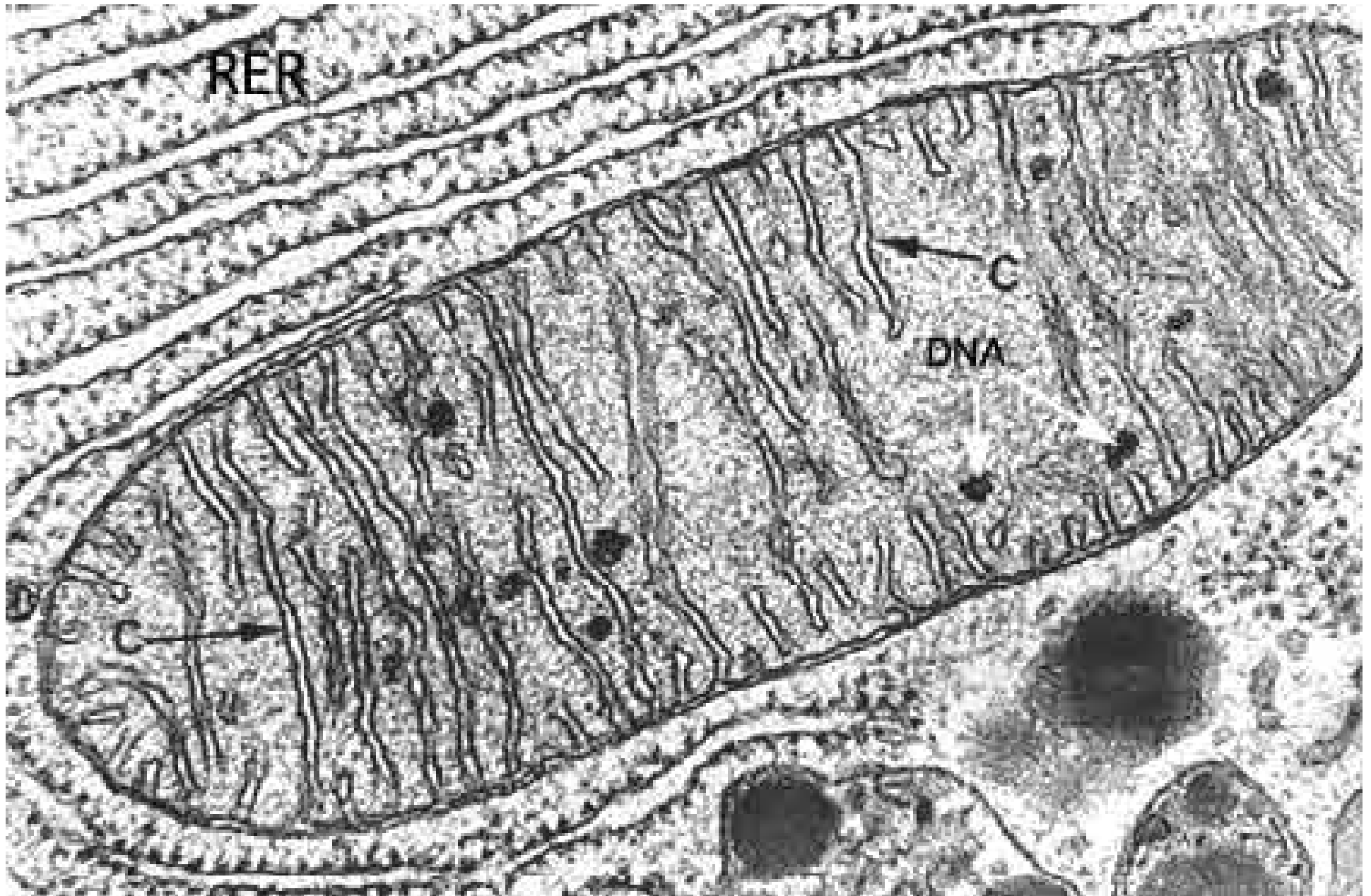




Pseudostratified Columnar Epithelium

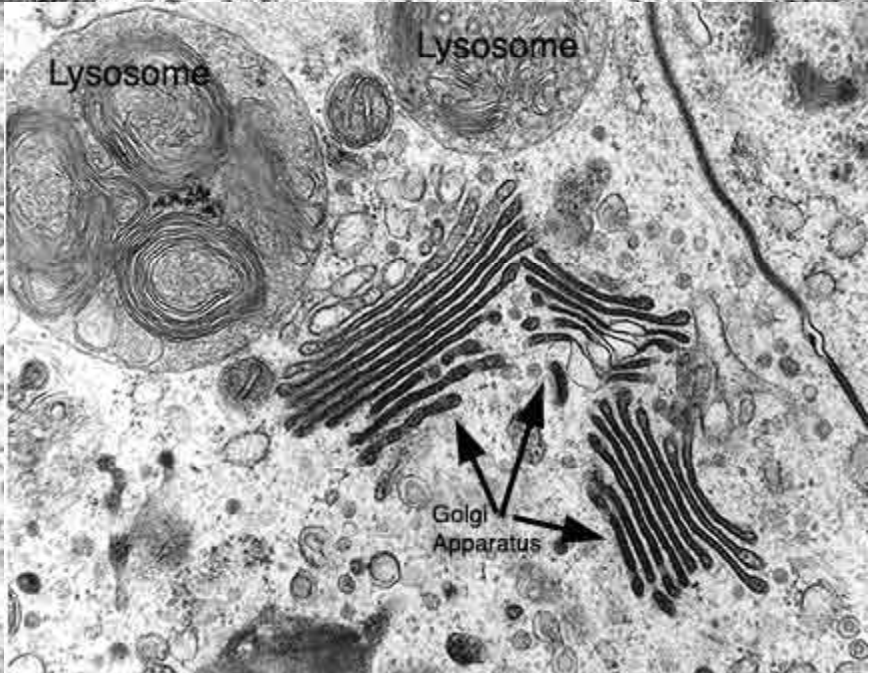
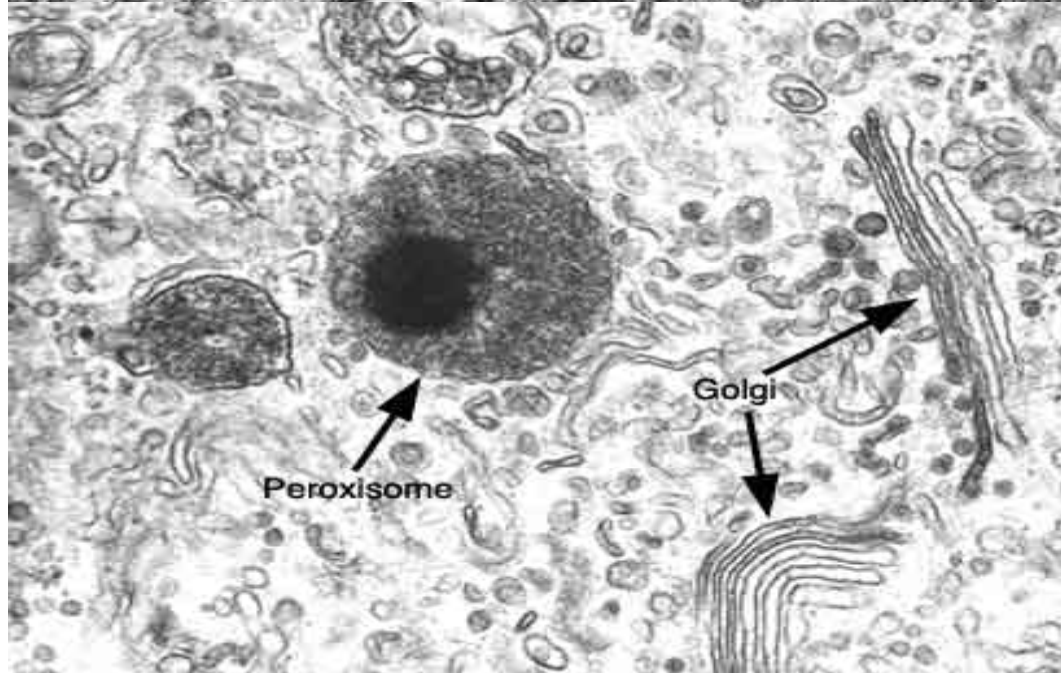
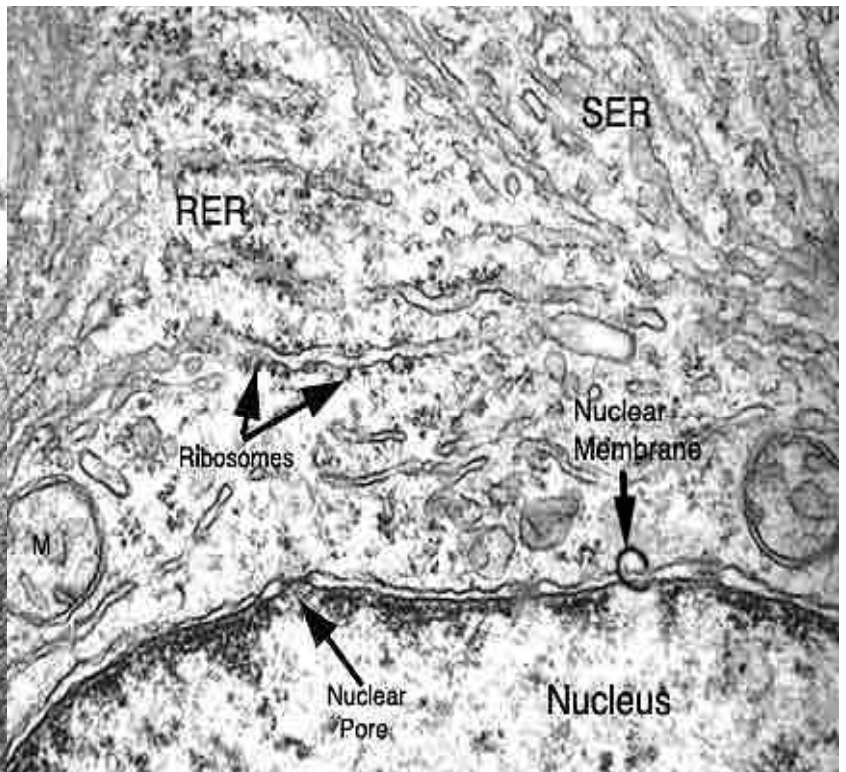
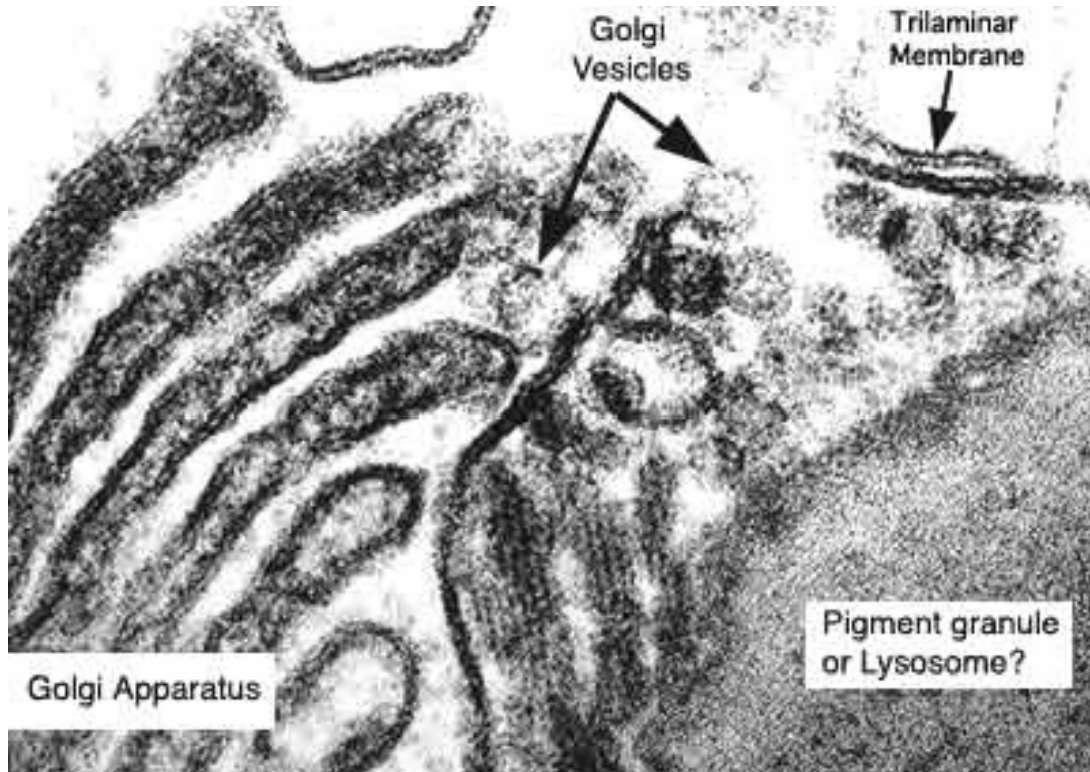
## Transitional Epithelium

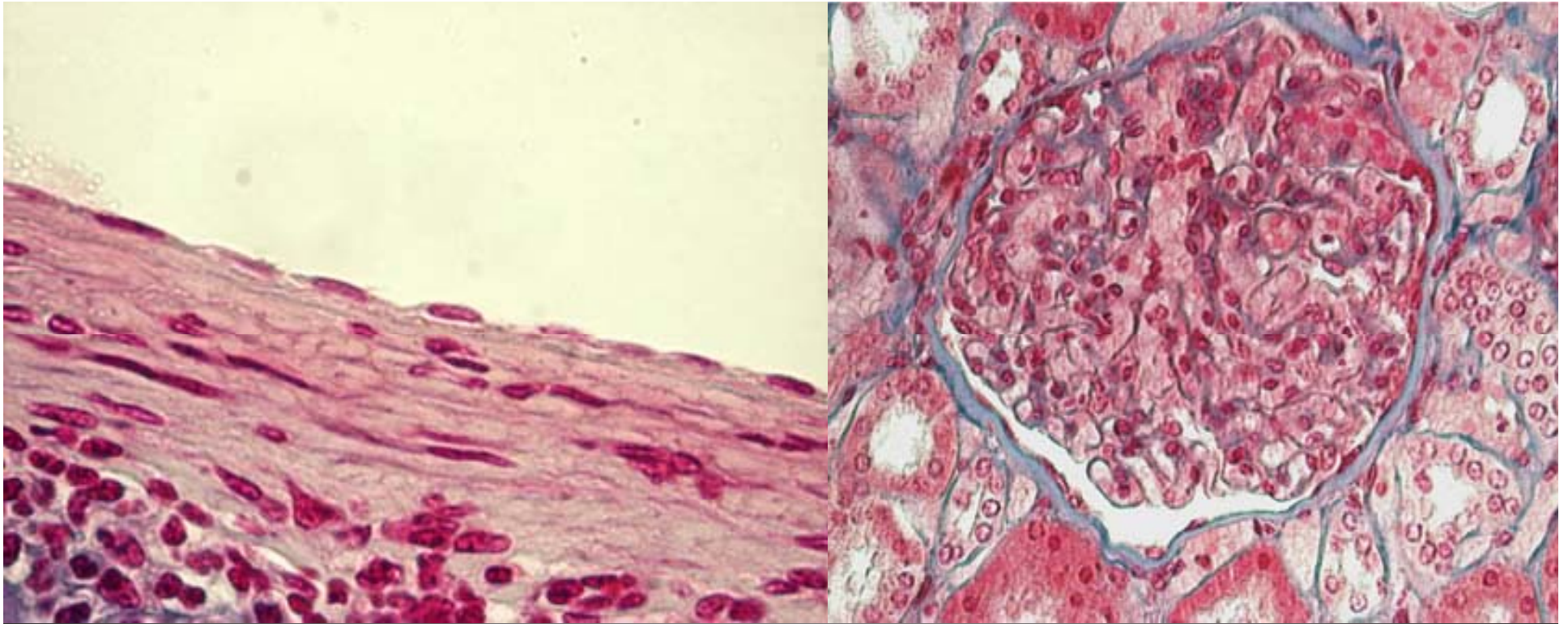




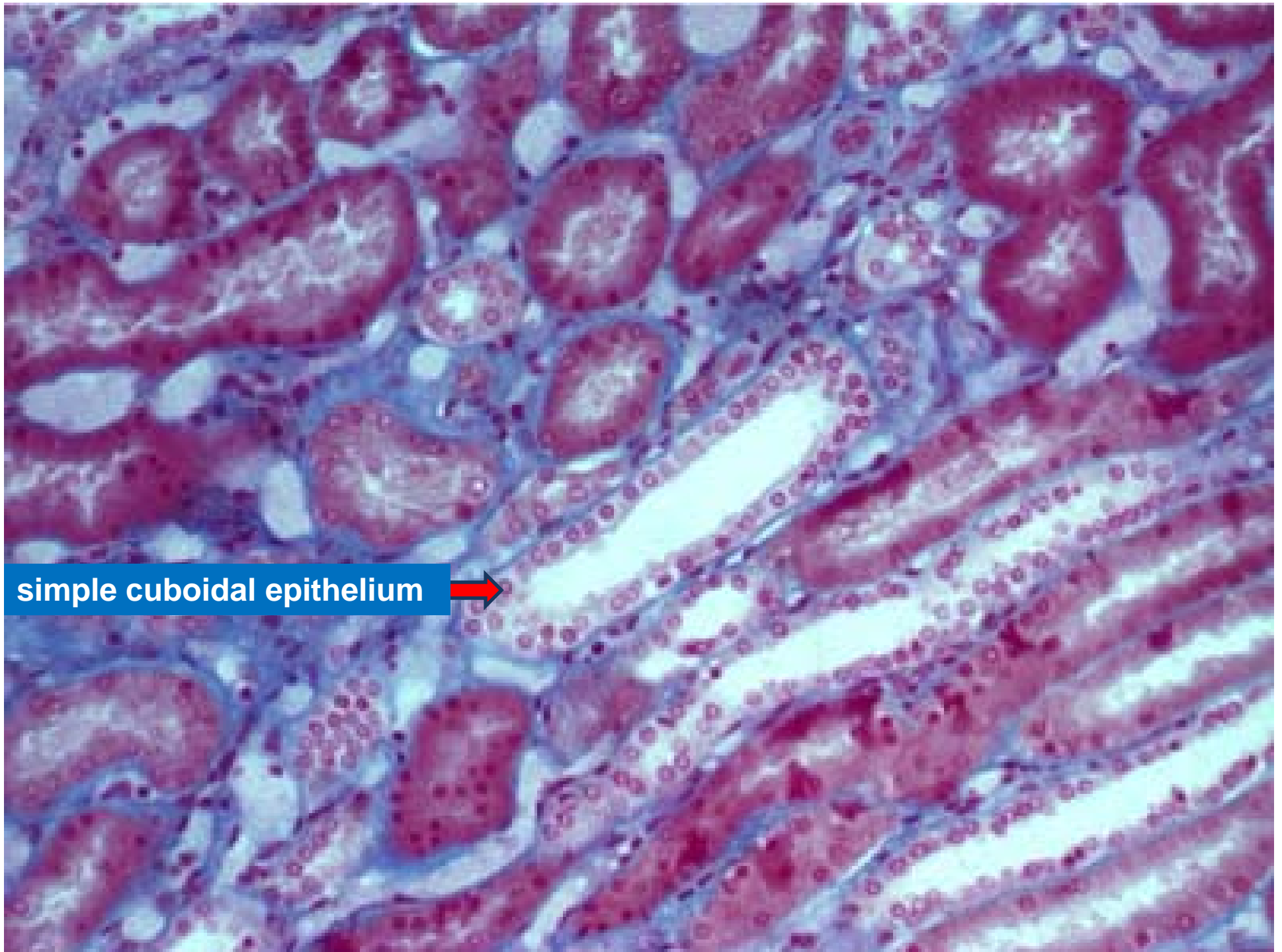
**C= Cristae Mitochondriales = Shelf like evaginations of the inner mitochondrial membrane.**  
**RER= Rough Endoplasmic Reticulum**  
**DNA = DNA containing granules found within the mitochondrion that is involved in mitochondrial reproduction.**







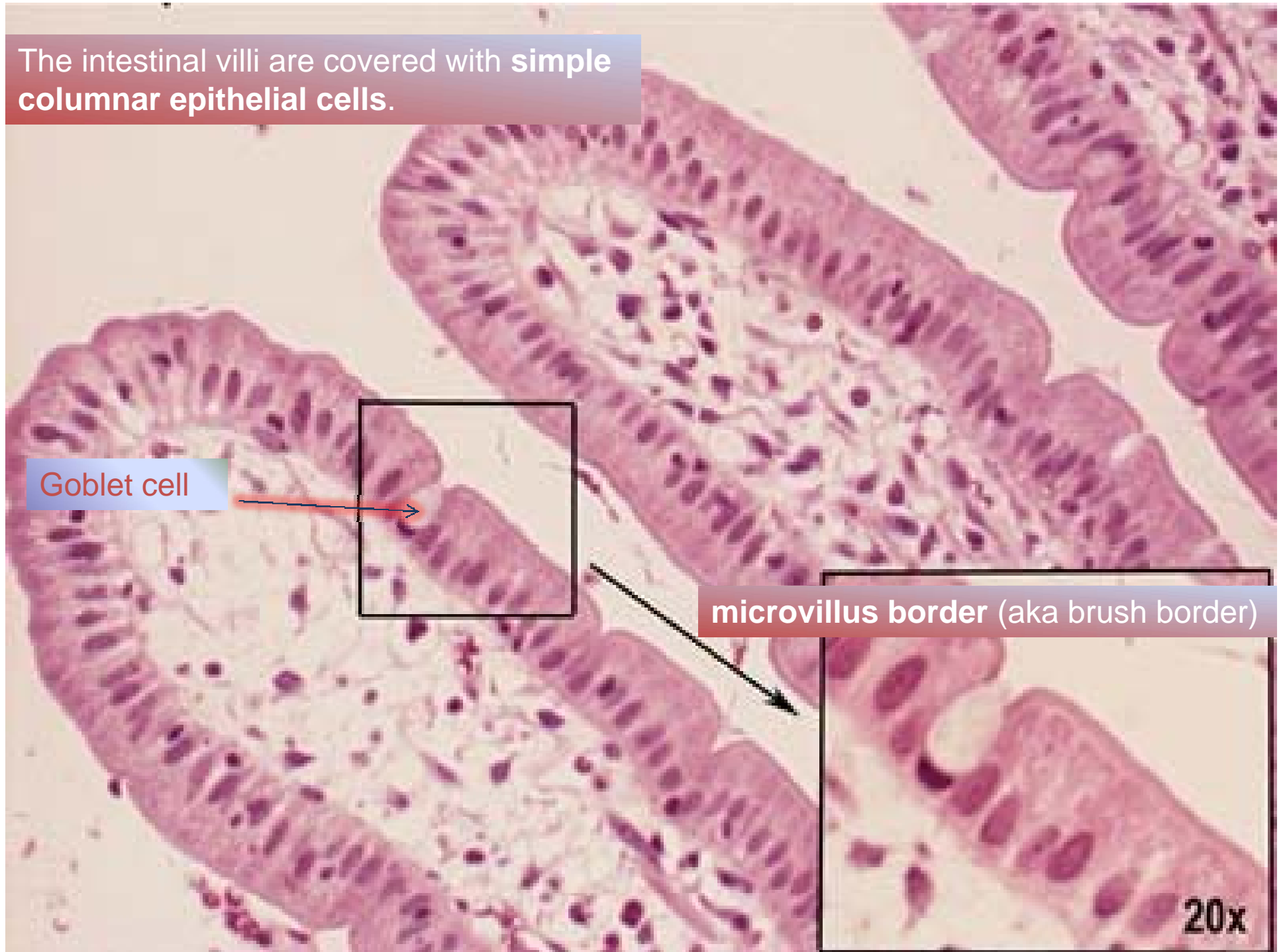
**Simple squamous epithelium**



simple cuboidal epithelium →



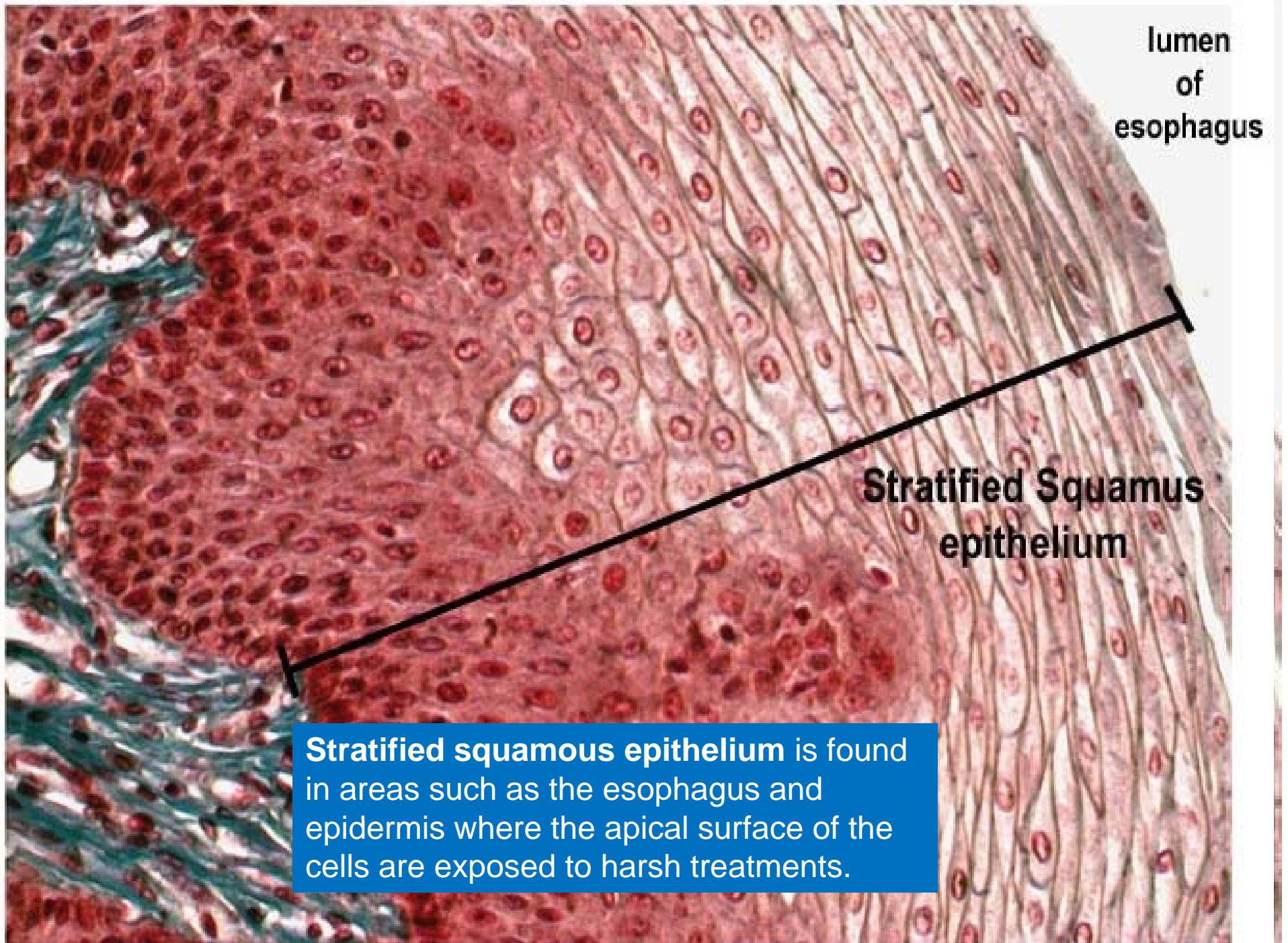
The intestinal villi are covered with **simple columnar epithelial cells**.



Goblet cell

microvillus border (aka brush border)

20x

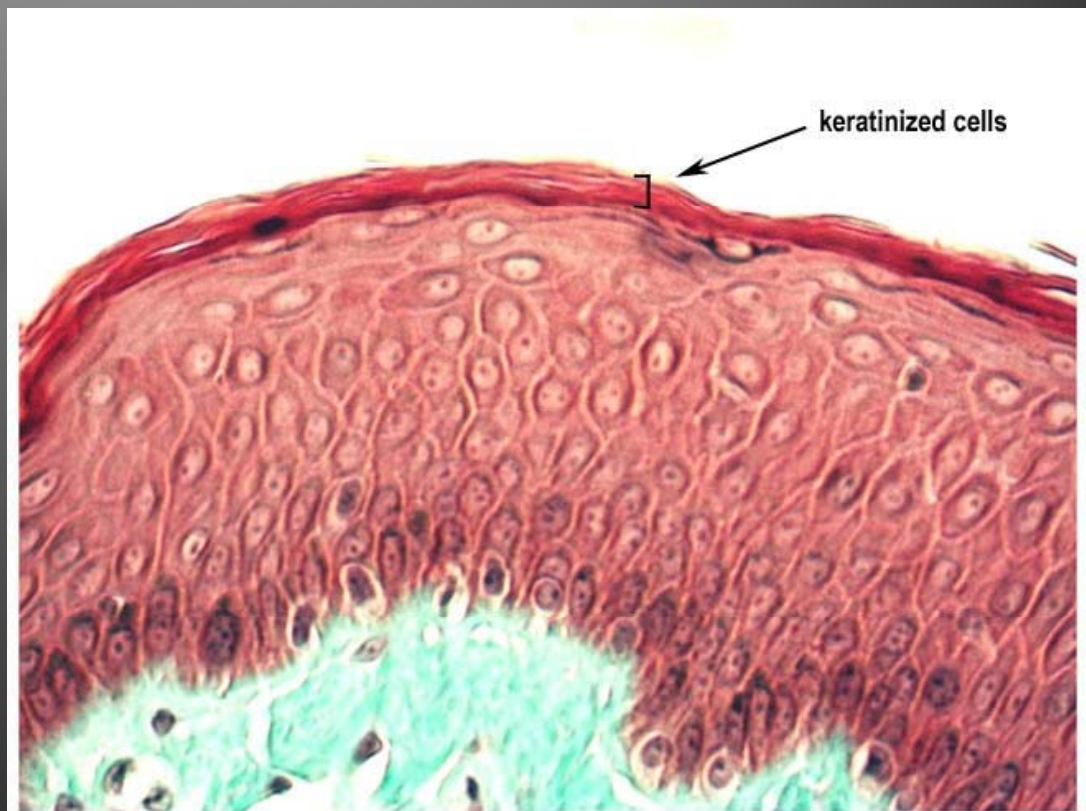
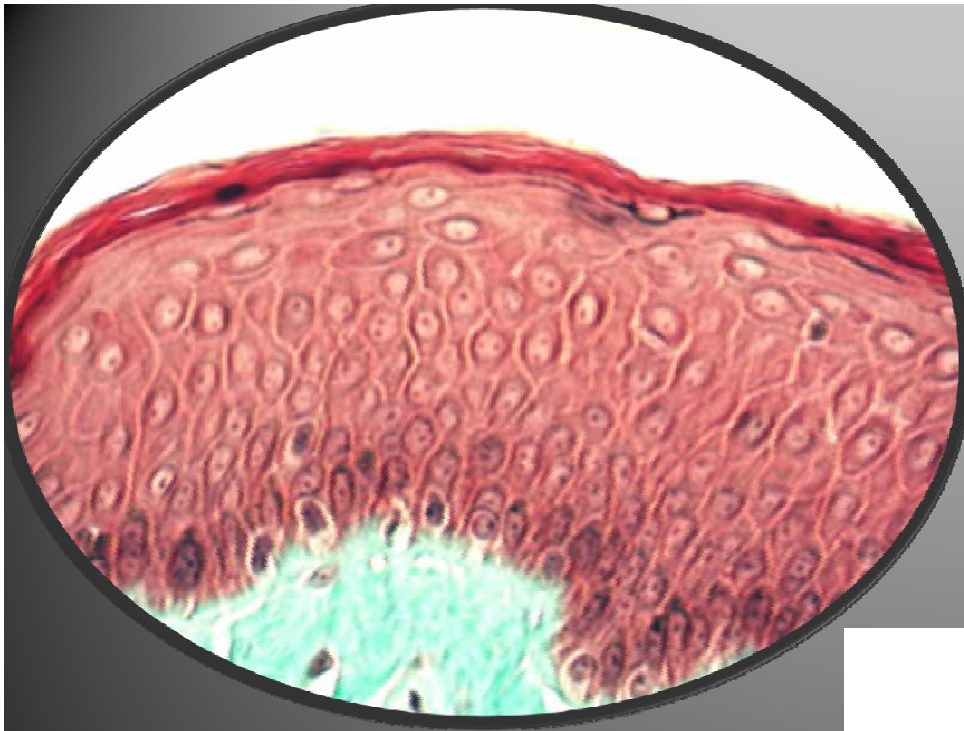


lumen  
of  
esophagus

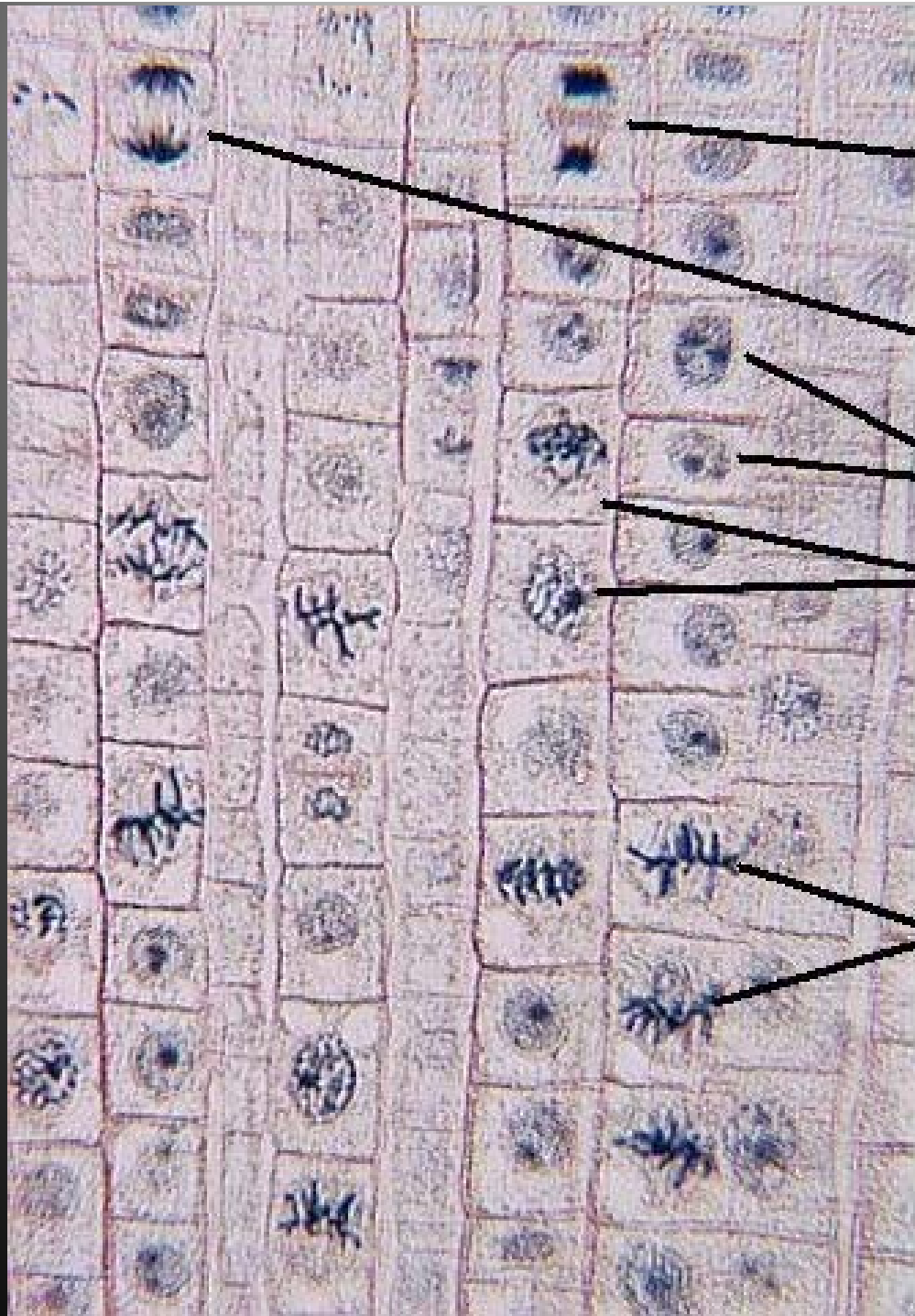
**Stratified Squamous  
epithelium**

**Stratified squamous epithelium** is found in areas such as the esophagus and epidermis where the apical surface of the cells are exposed to harsh treatments.

Stratified squamous keratinized epithelium is located predominantly along the exposed surfaces of the body, where it is subjected to an unfriendly environment.







**Telophase**

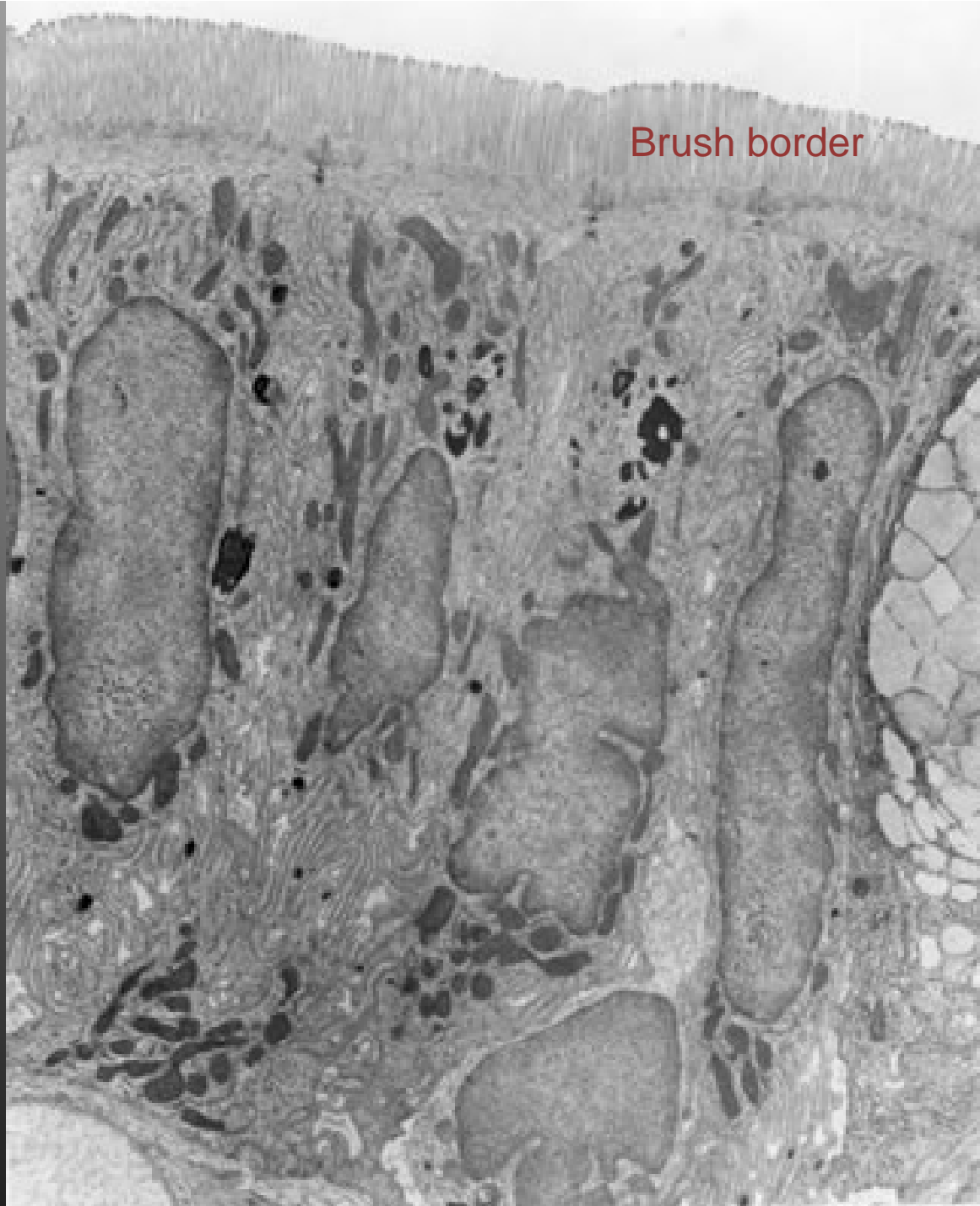
**Anaphase**

**Interphase**

**Prophase**

**Metaphase**

Brush border



## Some locations (not all) of Epithelial Tissues

### **Simple squamous**

inner surface of membr. labr. ear  
tympanic membrane  
Bowman's capsule  
amnion and chorion

### **Endothelium**

lines blood vessels,  
heart, and lymphatics  
also found in canal of Schlemm  
and trabecular meshwork

### **Mesothelium**

lines serous cavities (peritoneum, pericardium, pleura)

### **Simple cuboidal**

thyroid follicles  
kidney tubules  
choroid plexus  
capsule of lens  
pigmented layer of retina  
liver parenchyma (epithelioid form)  
germinal surface of ovary (low cuboidal)

### **Stratified cuboidal**

ducts sweat glands  
urethra  
covering of iris and ciliary body  
ducts of salivary glands

### **Simple columnar**

uterus (endometrium)  
lines digestive tube  
secretory ducts of glands  
some kidney tubules

### **Simple columnar (ciliated)**

oviduct  
small bronchioles  
central canal spinal cord  
epididymis (stereo-cilia which are really long microvilli)

### **Stratified columnar**

fornix of conjunctiva  
ducts of salivary glands  
ductus deferens

### **Pseudo-stratified columnar**

parotid gland ducts  
male urethra

### **Pseudo-stratified ciliated columnar**

respiratory passages

### **Transitional**

Renal pelvis, ureter & bladder  
upper part of male urethra