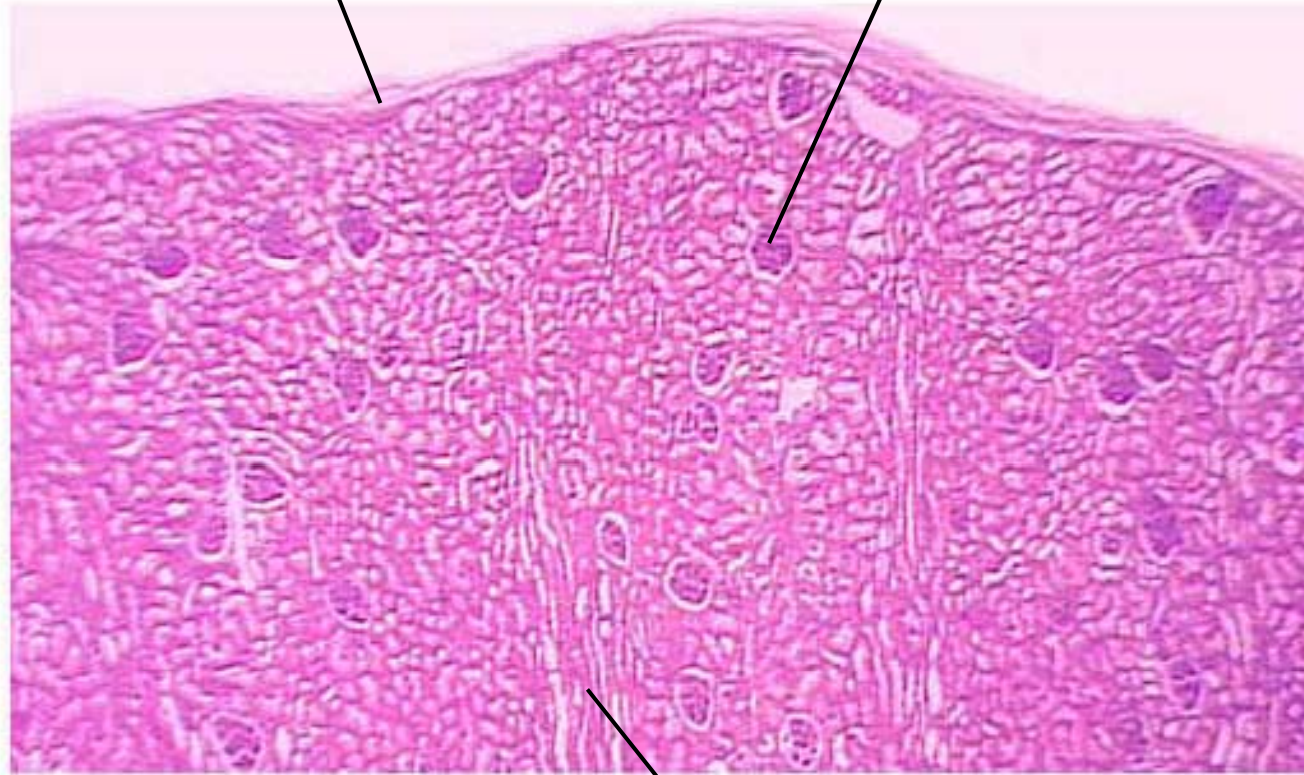


**Kidney, medulla (16X)**

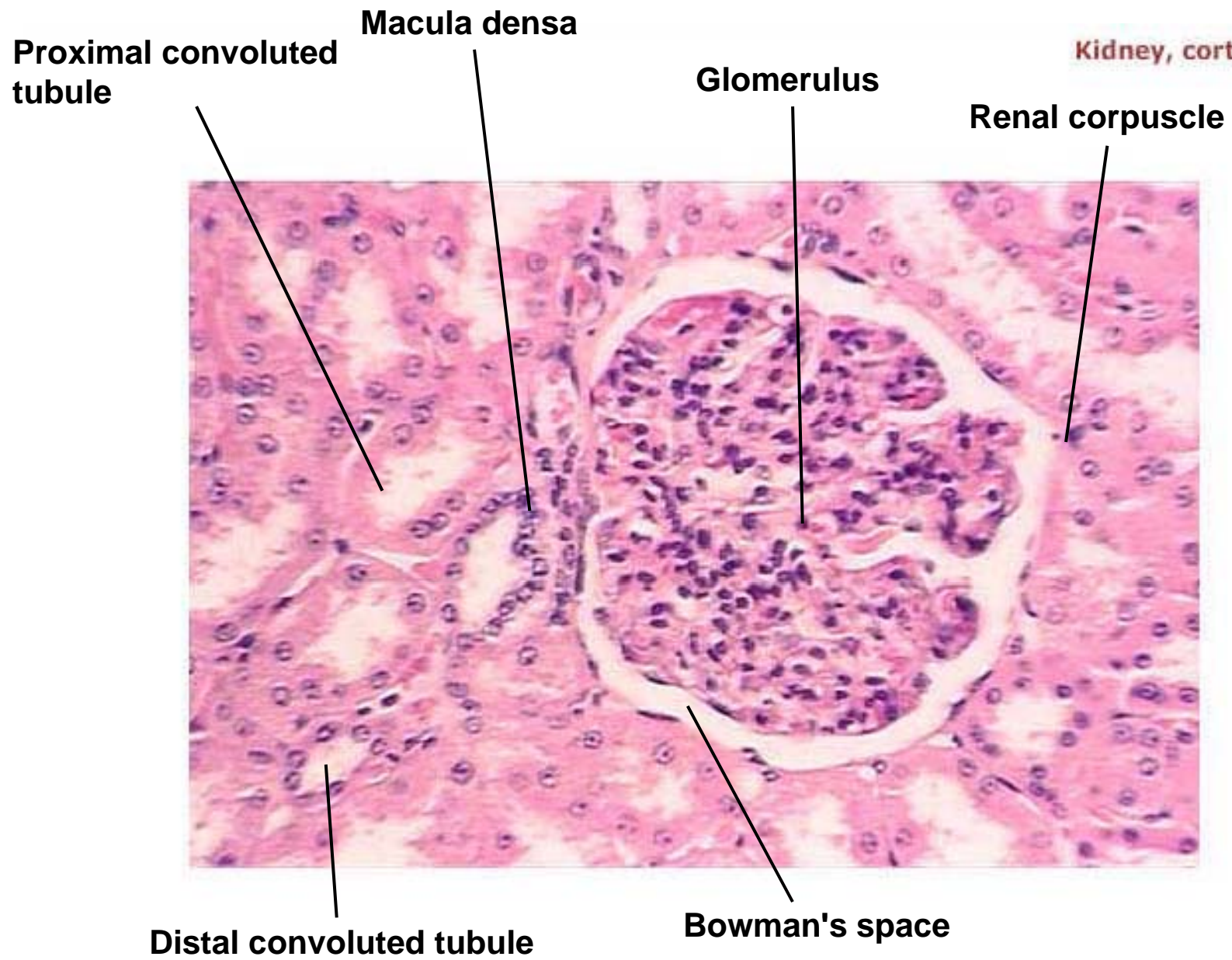
**Renal capsule**

**Renal corpuscles**



**Medullary rays**

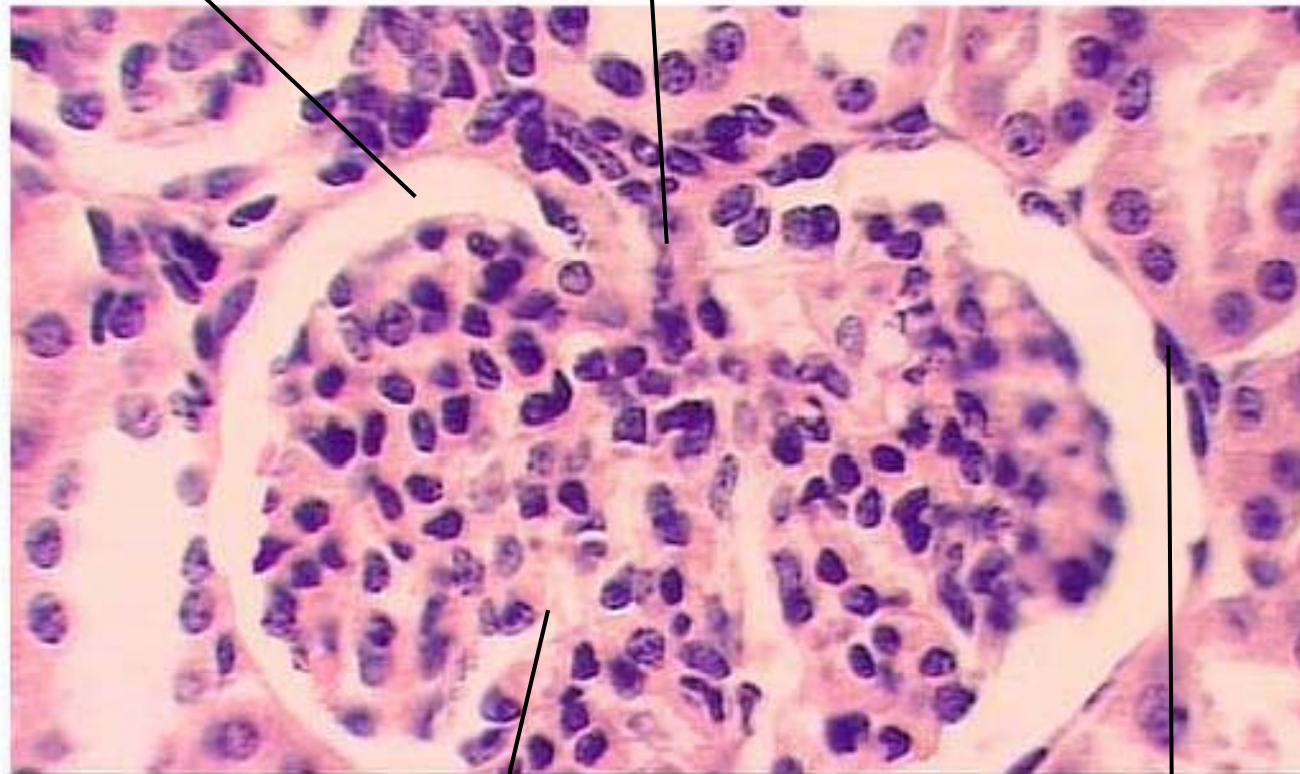
Kidney, cortex (80X)



Kidney, cortex (160X)

Bowman's space

Vascular pole

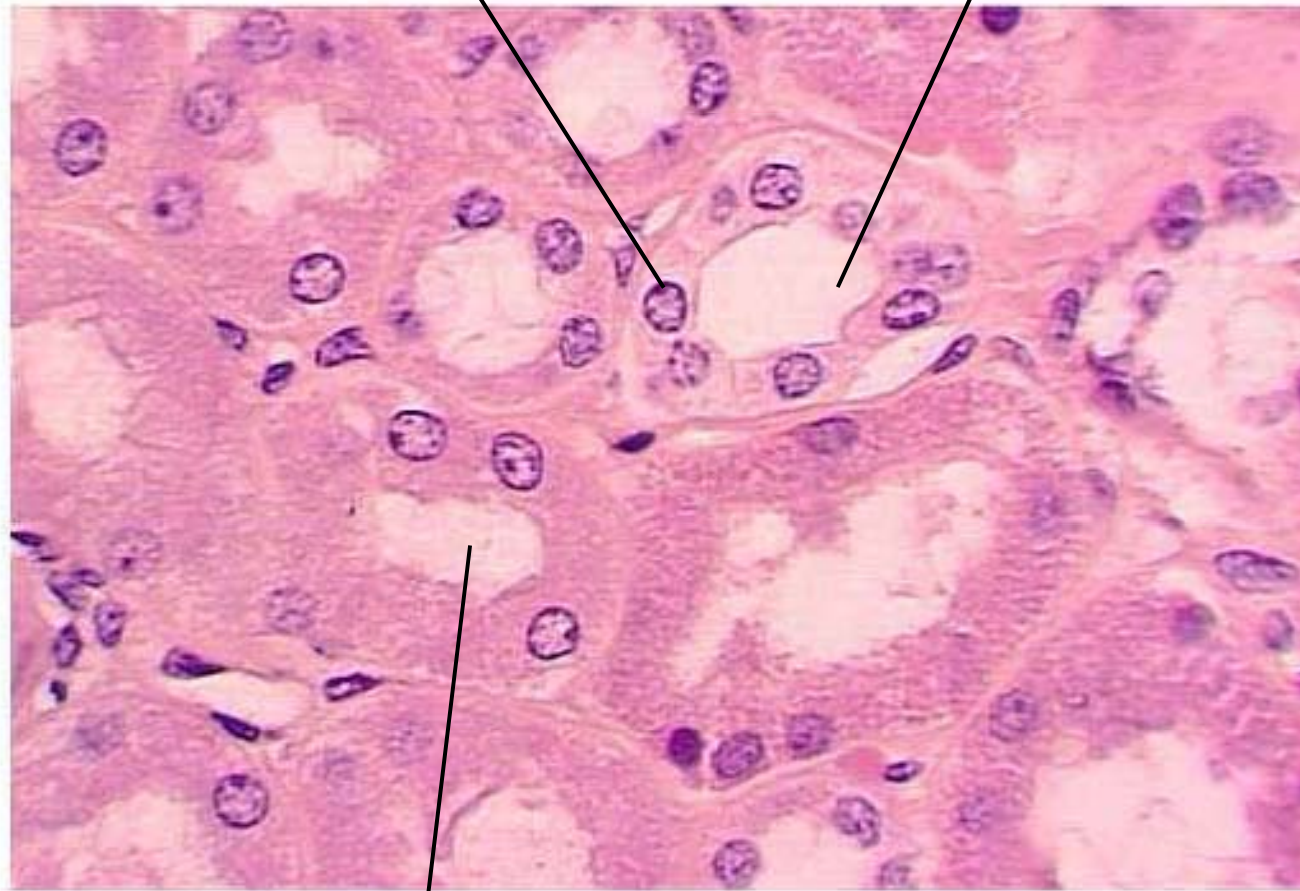


Glomerulus

Simple squamous epithelium  
lining Bowman's space

Simple cuboidal cell

Distal convoluted tubule



Proximal convoluted tubule

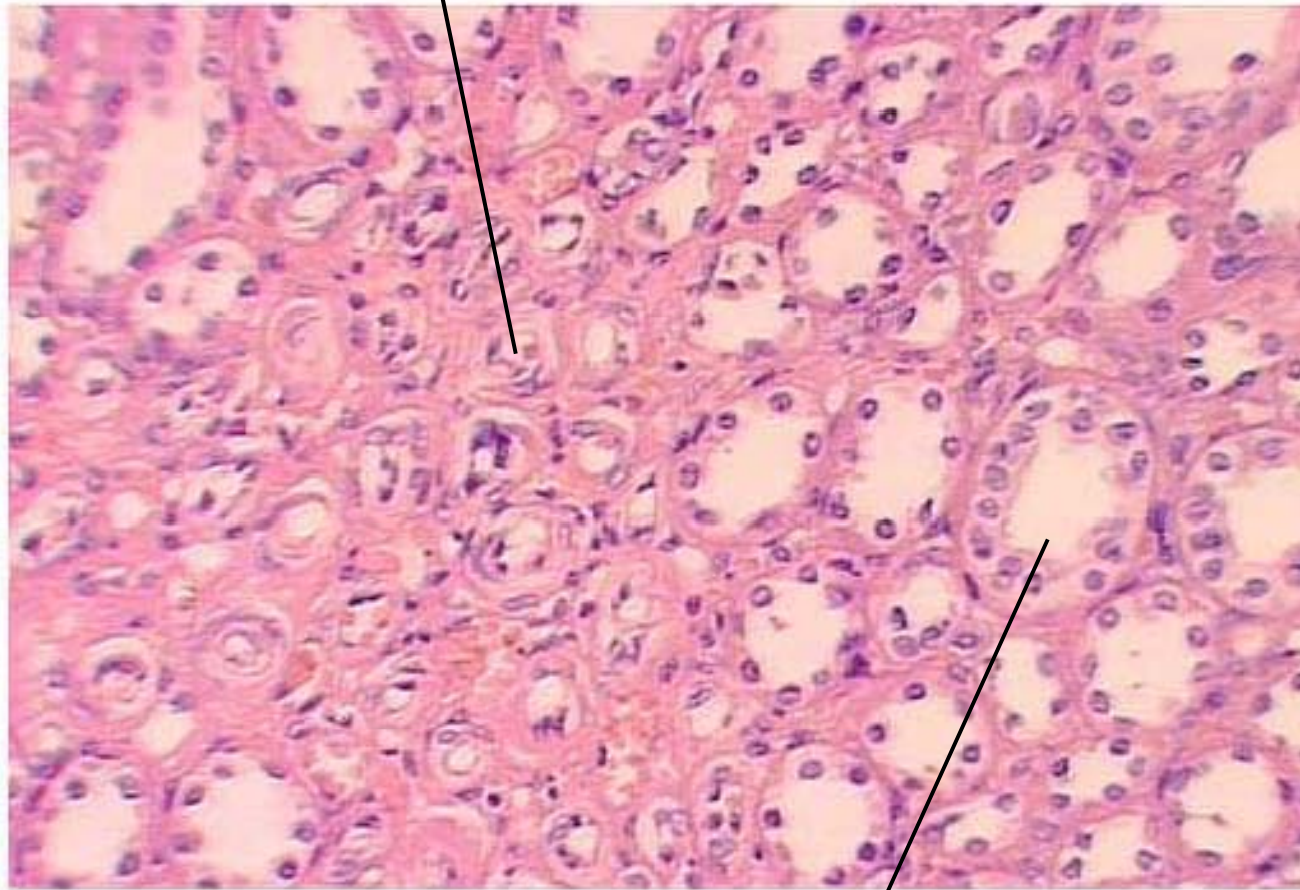
Kidney, cortex (160X)

Microvilli



Proximal convoluted tubule

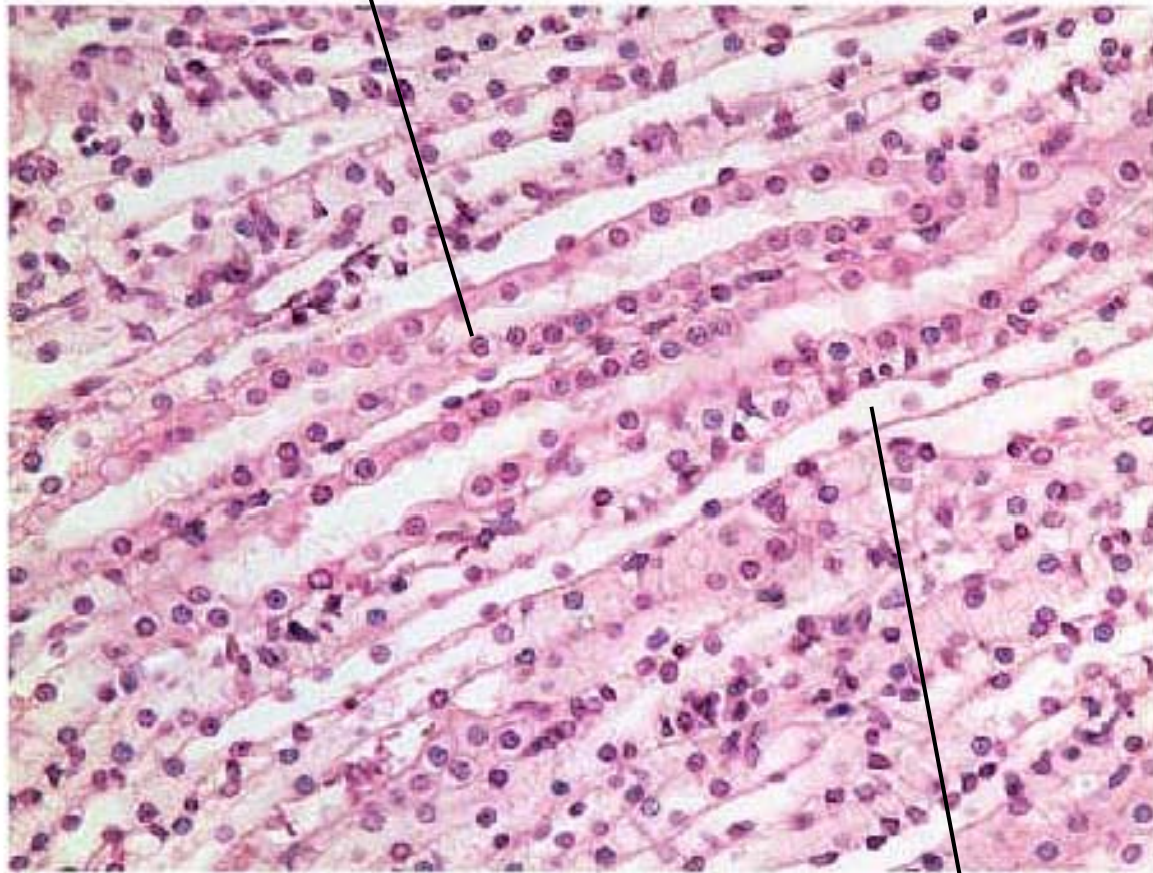
Loops of Henle



Collecting ducts

**Kidney, medulla (16X)**

**Collecting duct**

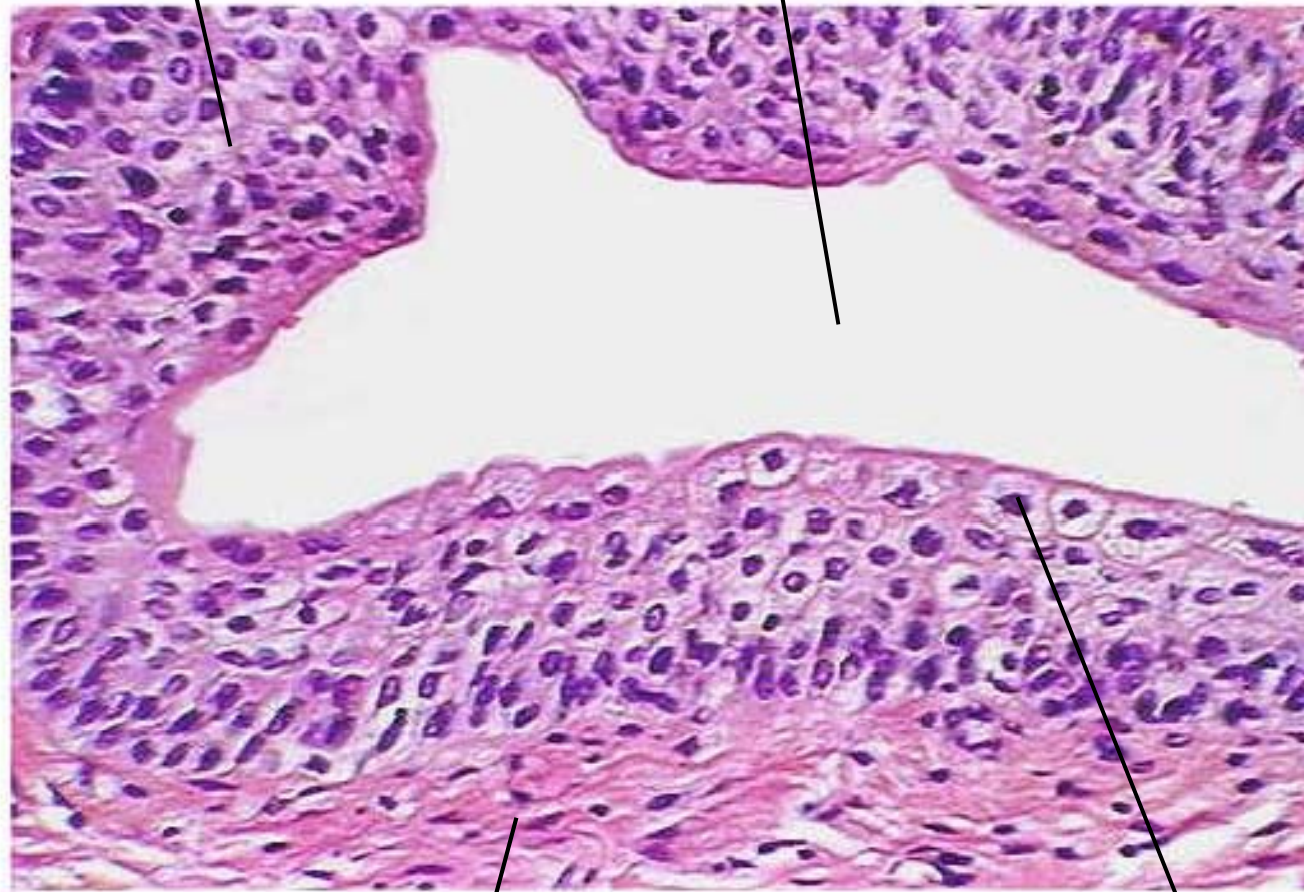


**Loop of Henle**

Urinary bladder (80X)

Transitional epithelium

Lumen of bladder



Lamina propria

Apical cell



Urinary bladder (160X)

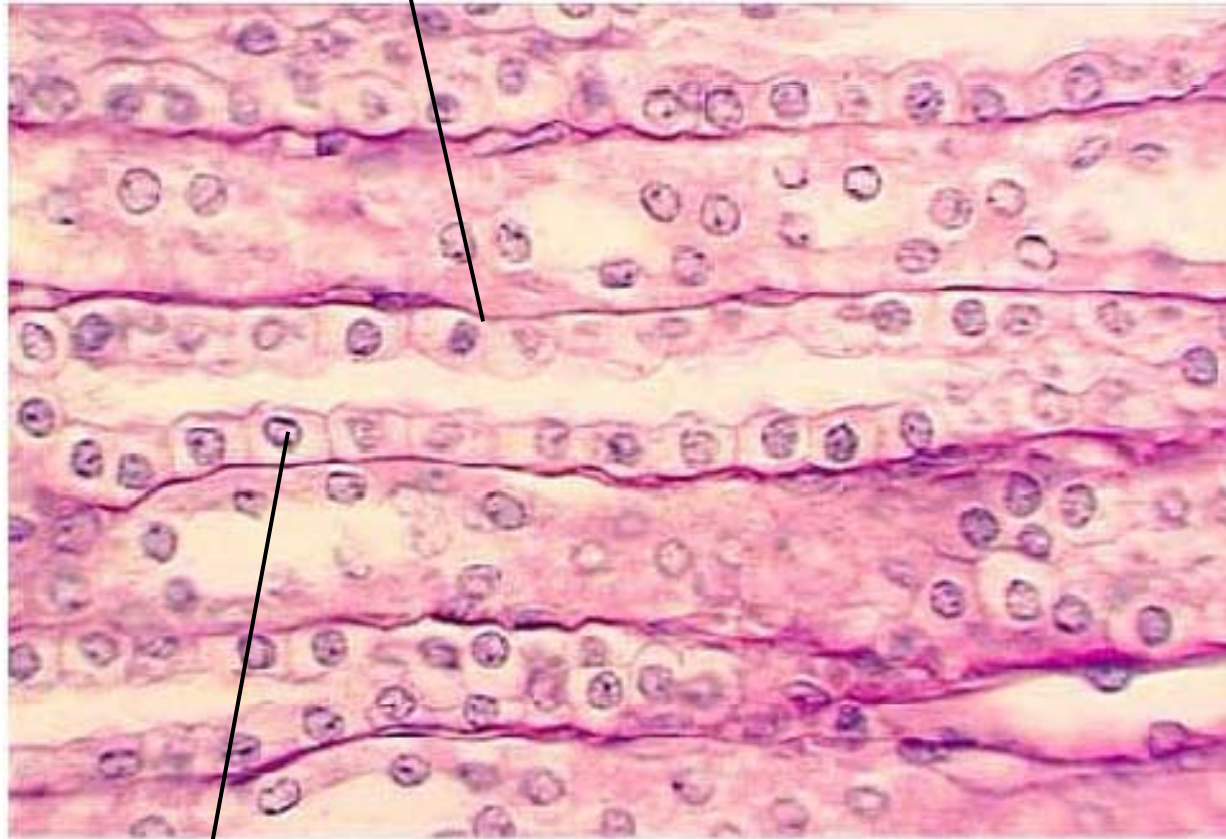
Apical cell

Transitional epithelium



Lamina propria

Collecting duct

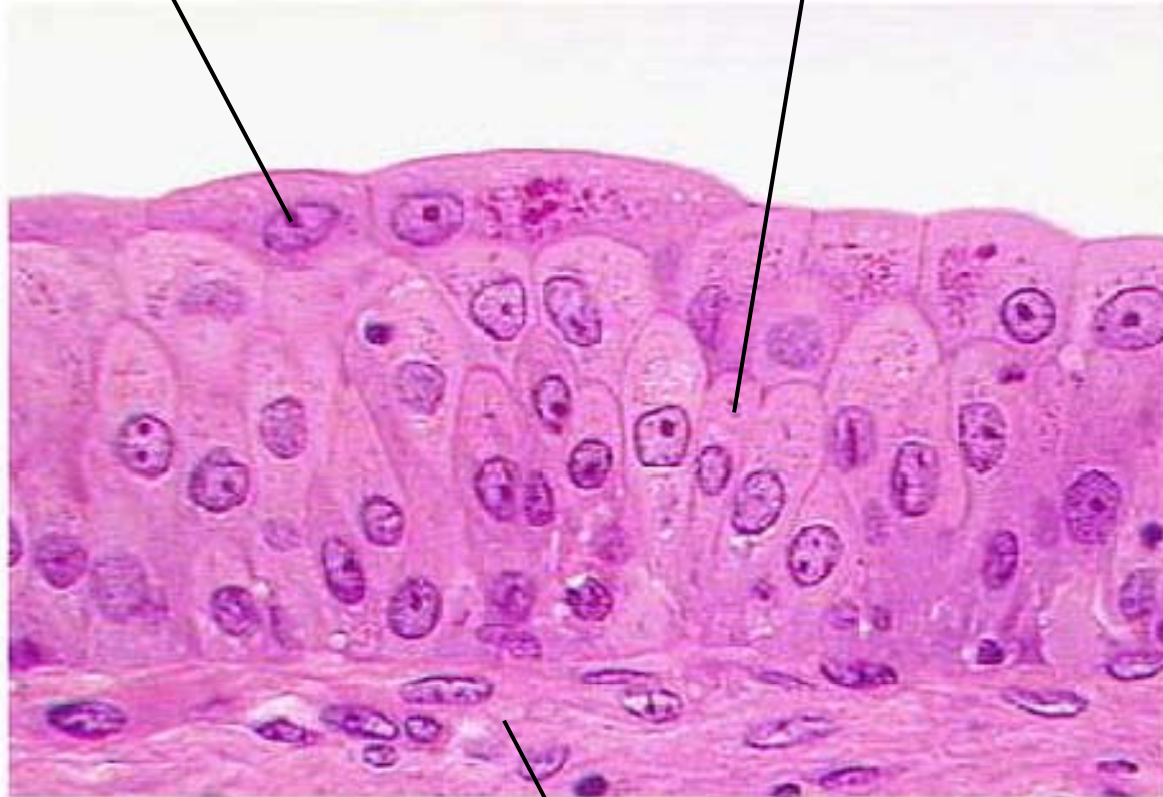


Simple cuboidal cell

Urinary bladder (160X)

Apical cell

Transitional epithelium



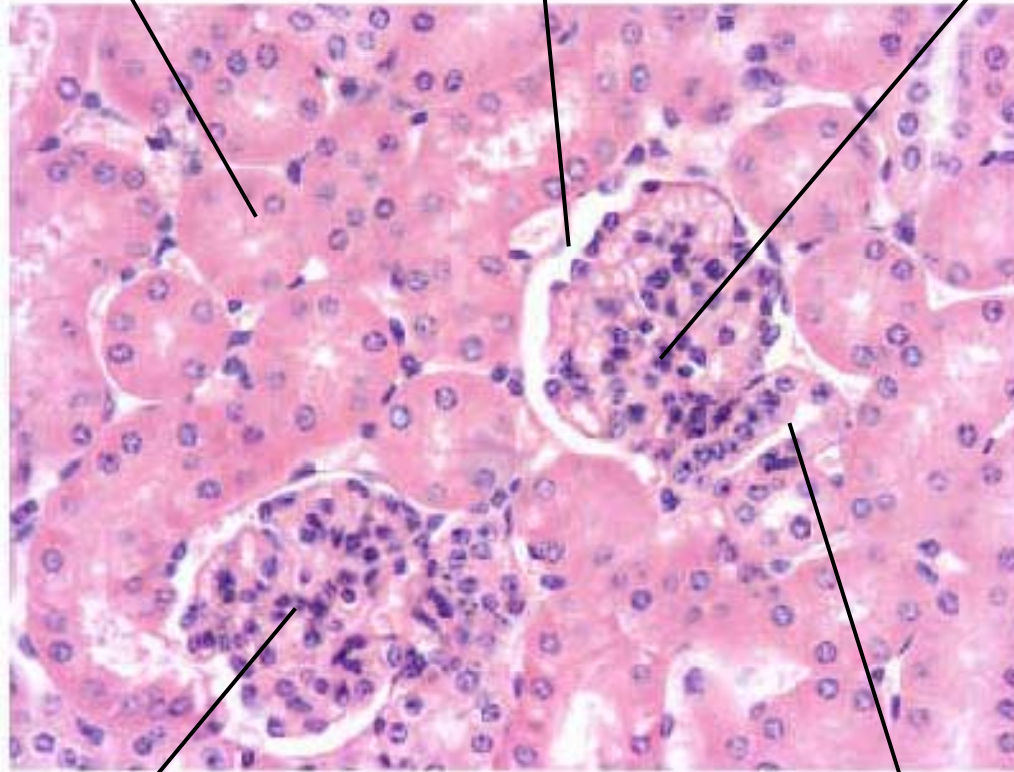
Lamina propria

**Kidney-Cortex (high power)**

**Proximal convoluted tubule**

**Bowman's space**

**Glomerulus**



**Renal corpuscle**

**Macula densa of distal convoluted tubule**