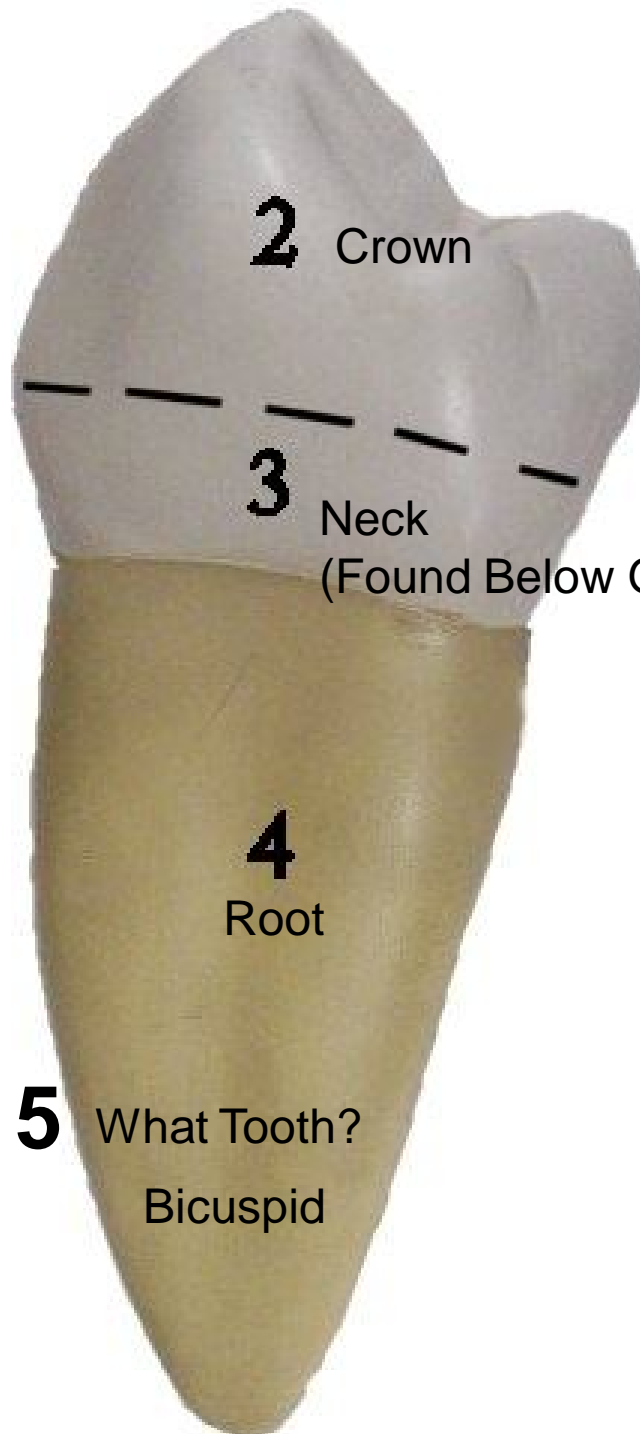




1 What Tooth?
Cuspid (Canine)



2 Crown

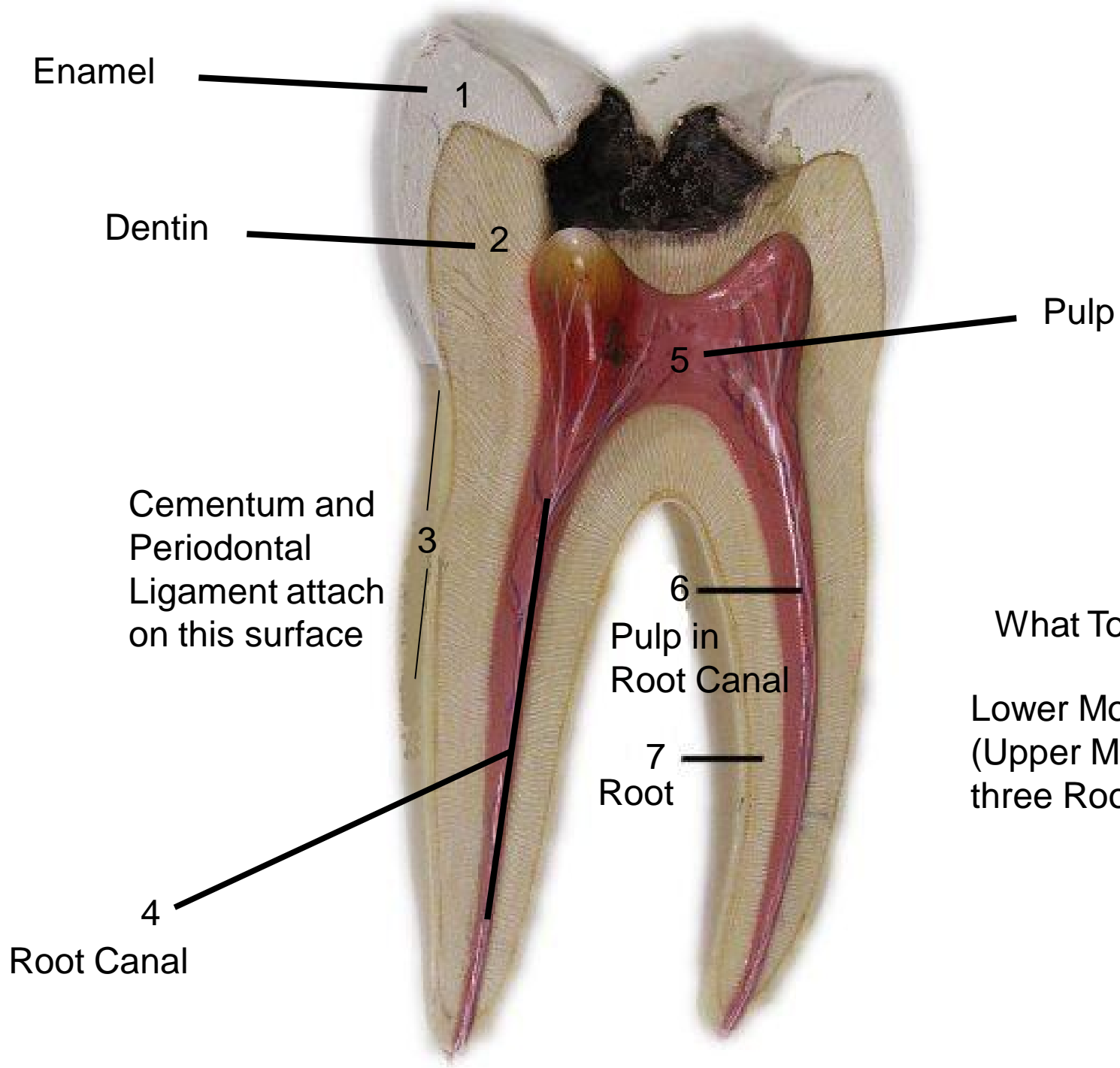
3 Neck
(Found Below Gum Line)

4
Root

5 What Tooth?
Bicuspid

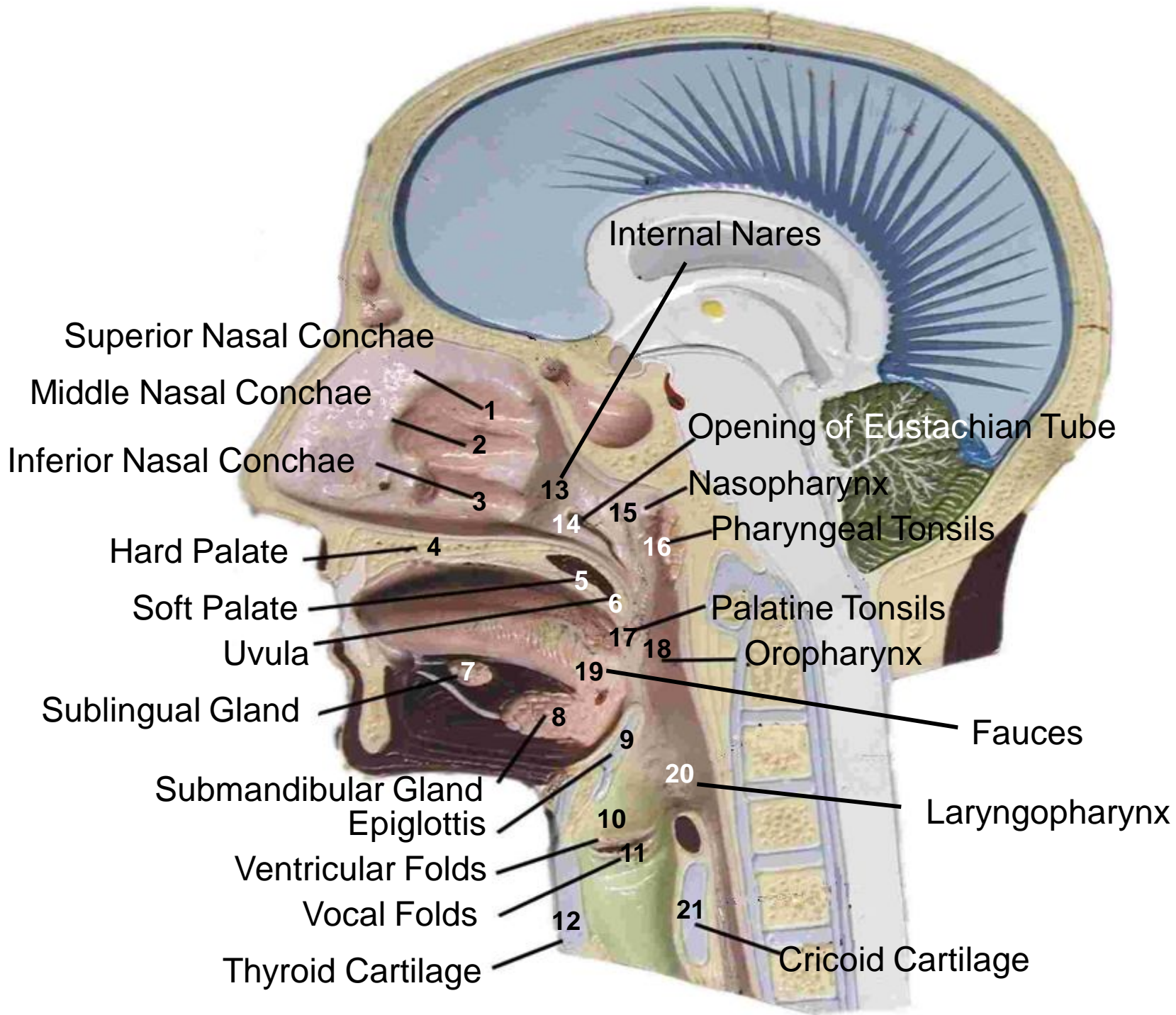


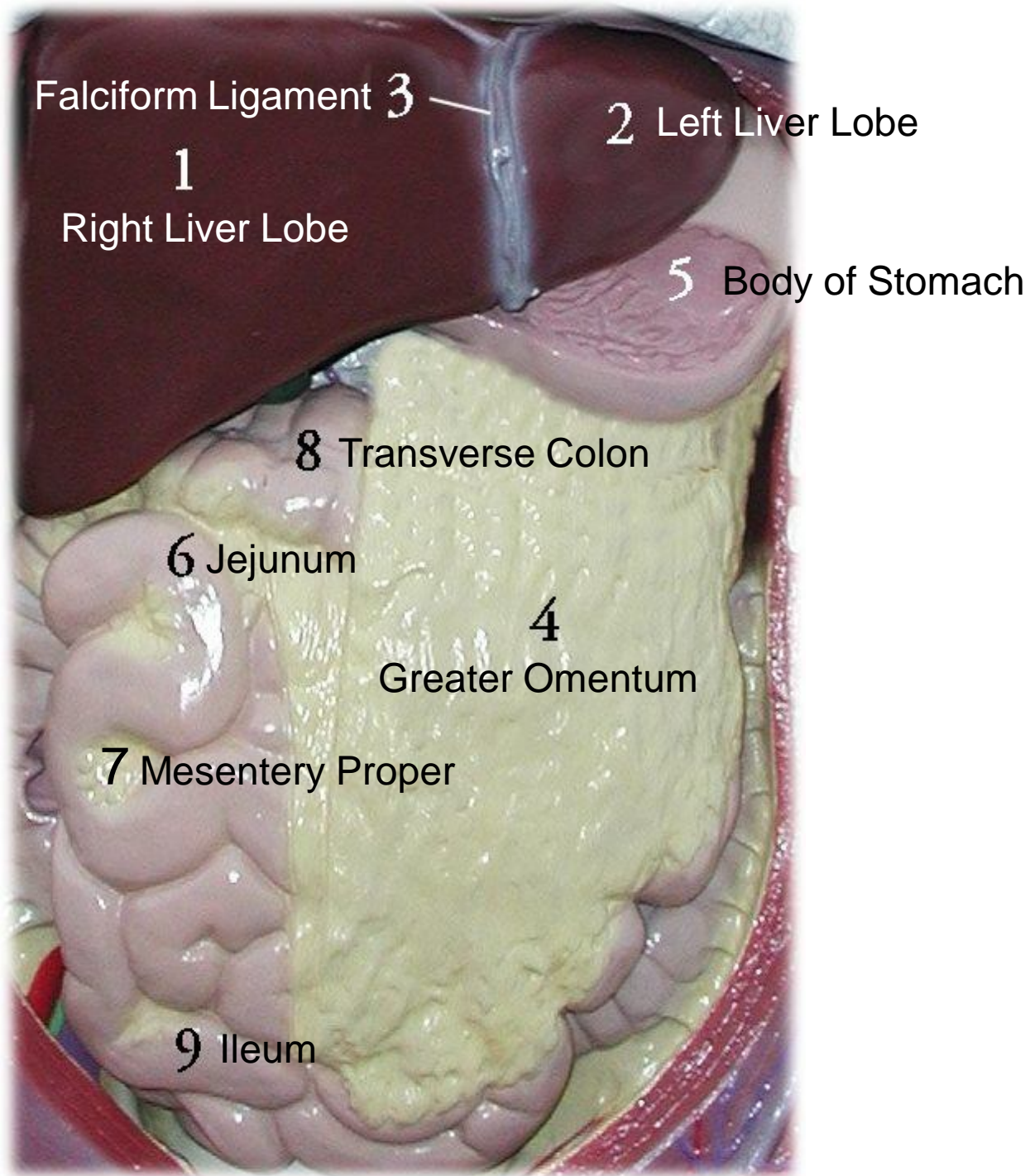
6 What Tooth?
Incisor



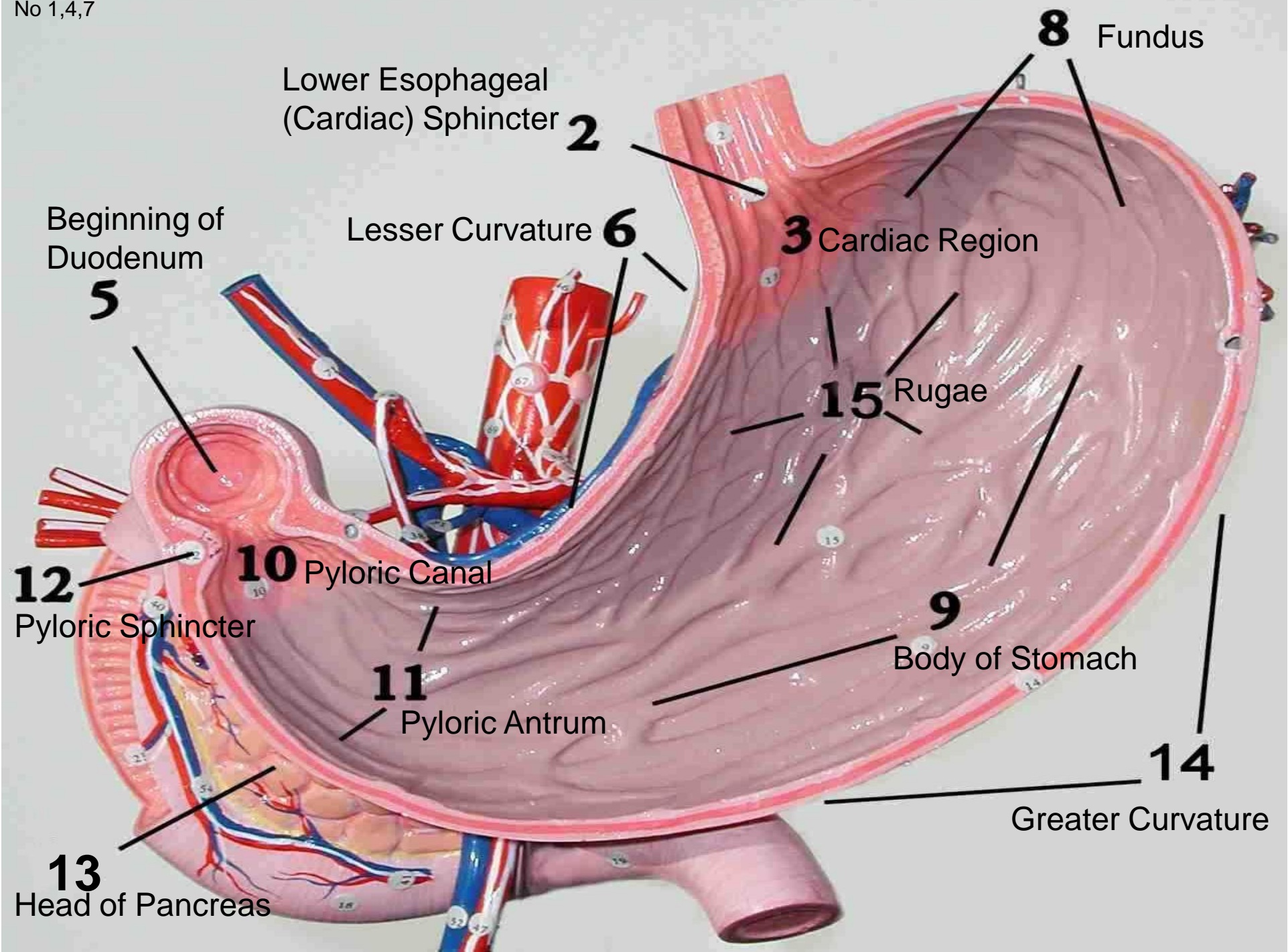
What Tooth?

Lower Molar
(Upper Molar has
three Roots)





No 1,4,7



Lower Esophageal (Cardiac) Sphincter **2**

8 Fundus

Beginning of Duodenum **5**

Lesser Curvature **6**

3 Cardiac Region

15 Rugae

12 Pyloric Sphincter

10 Pyloric Canal

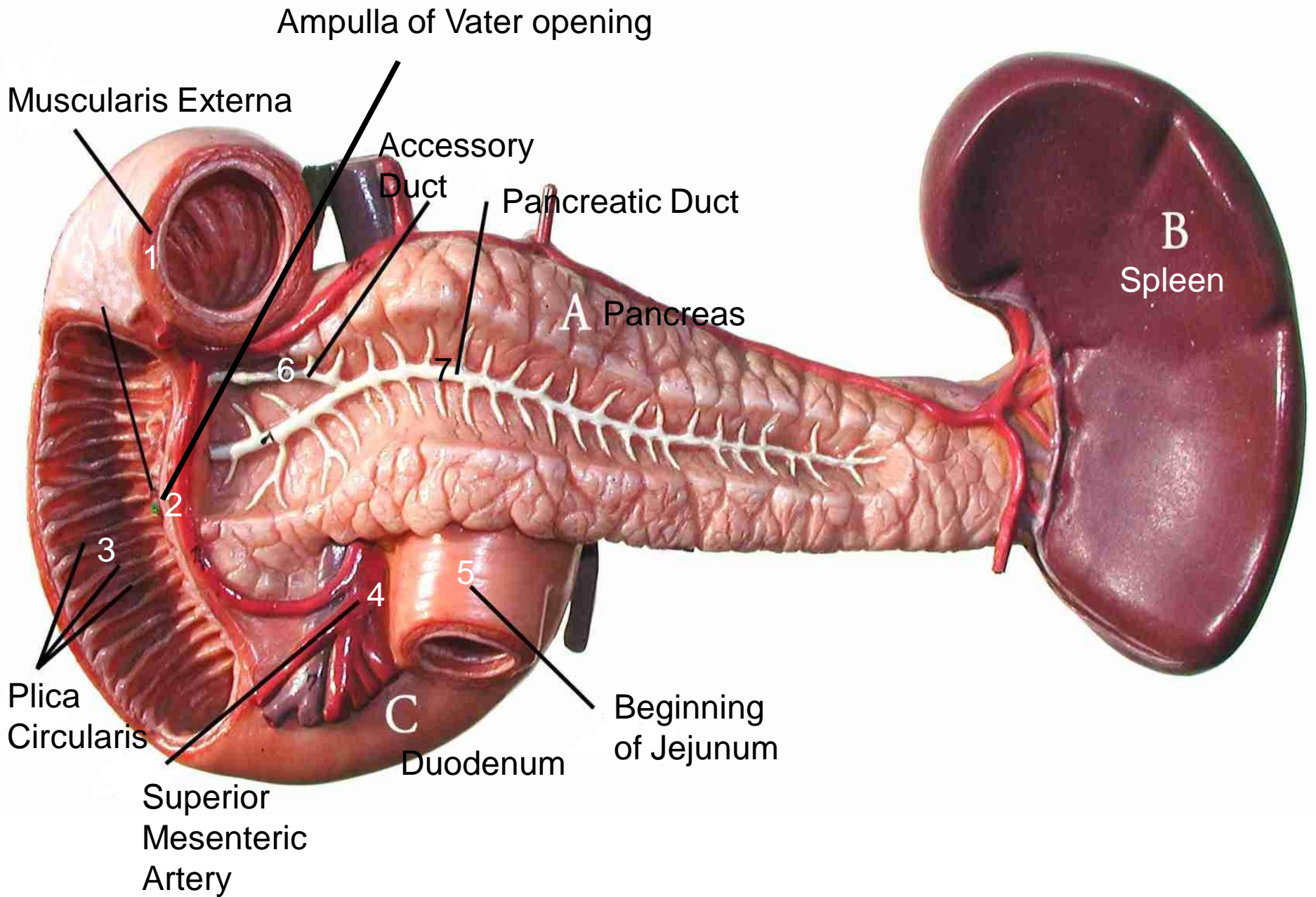
9 Body of Stomach

11 Pyloric Antrum

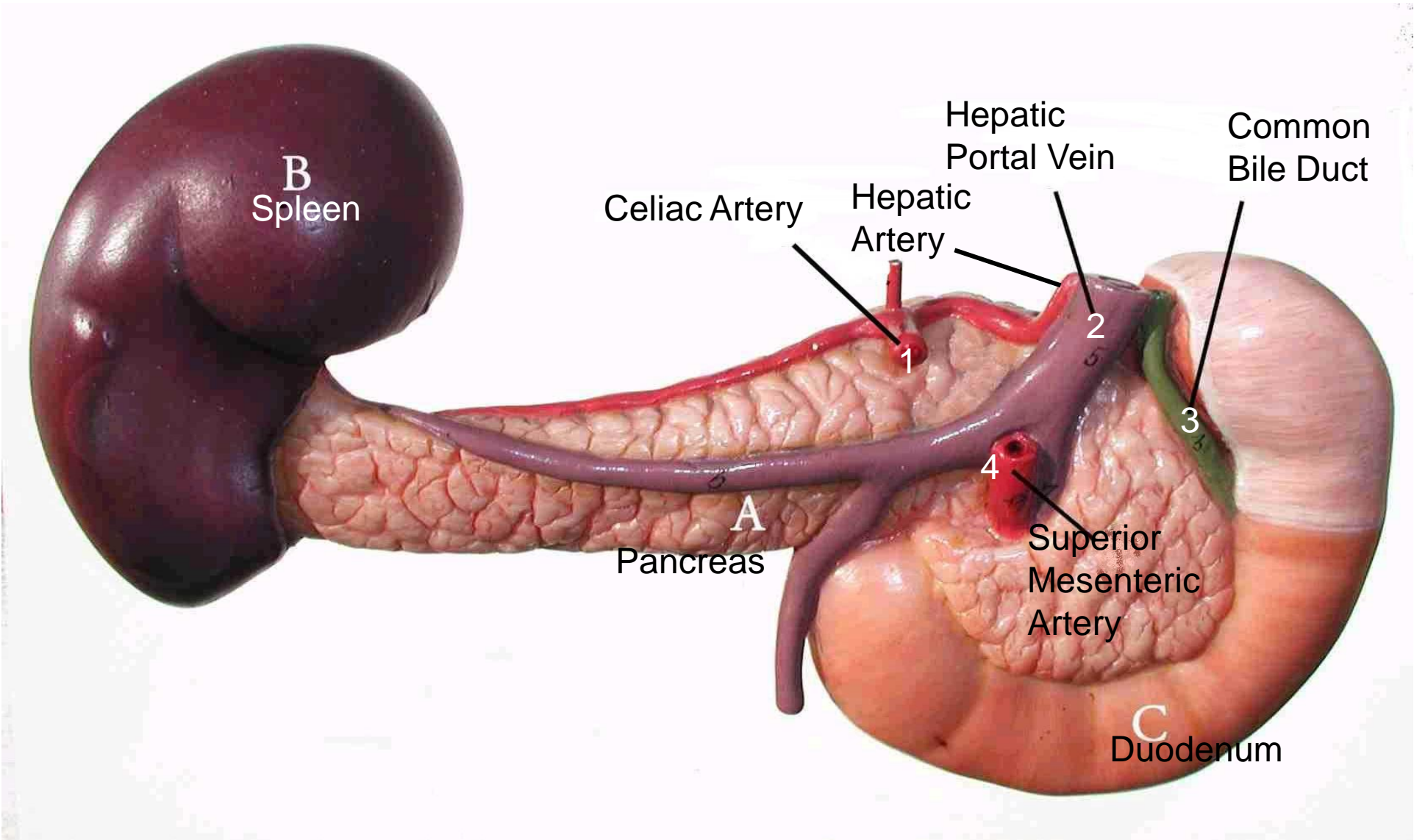
14 Greater Curvature

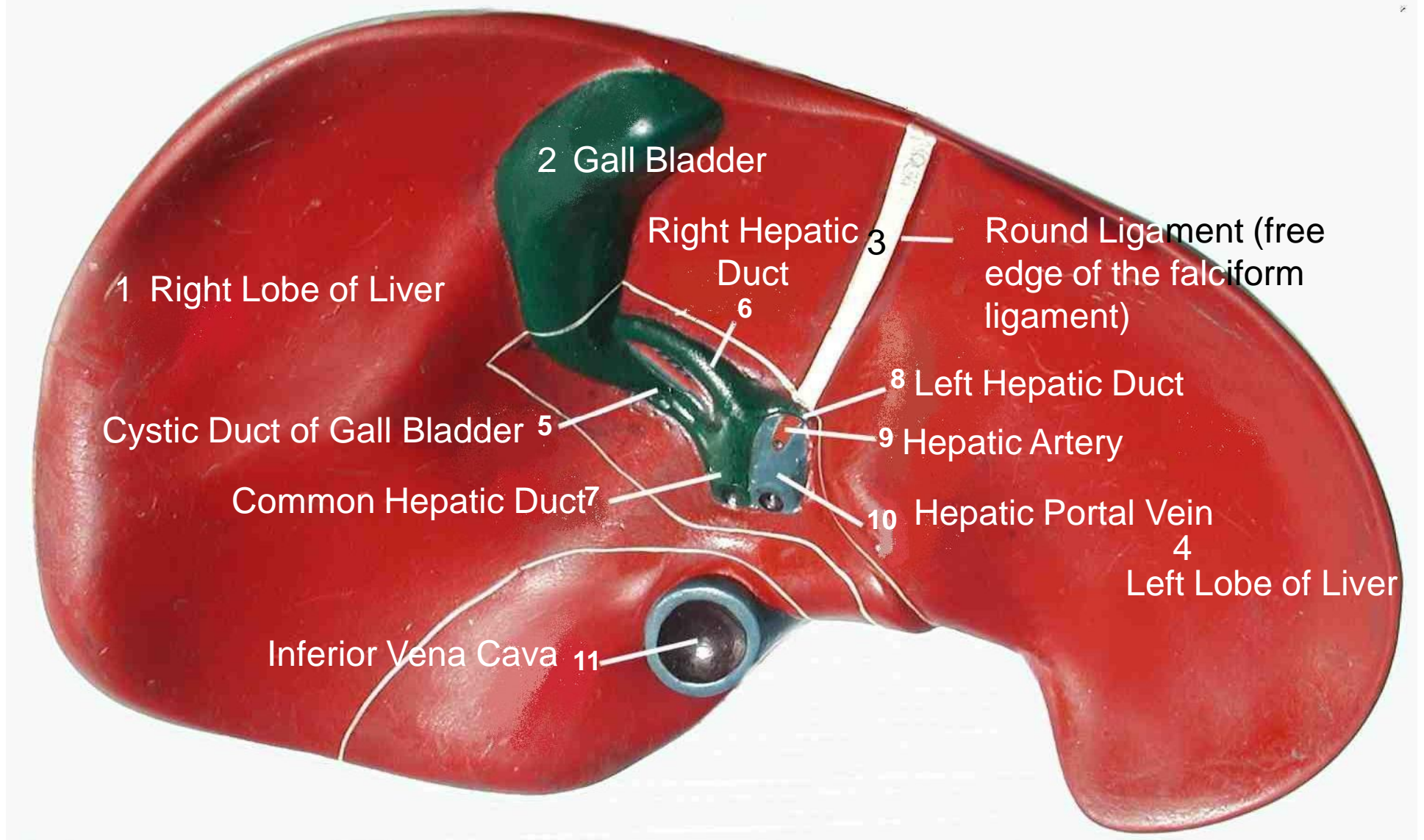
13 Head of Pancreas

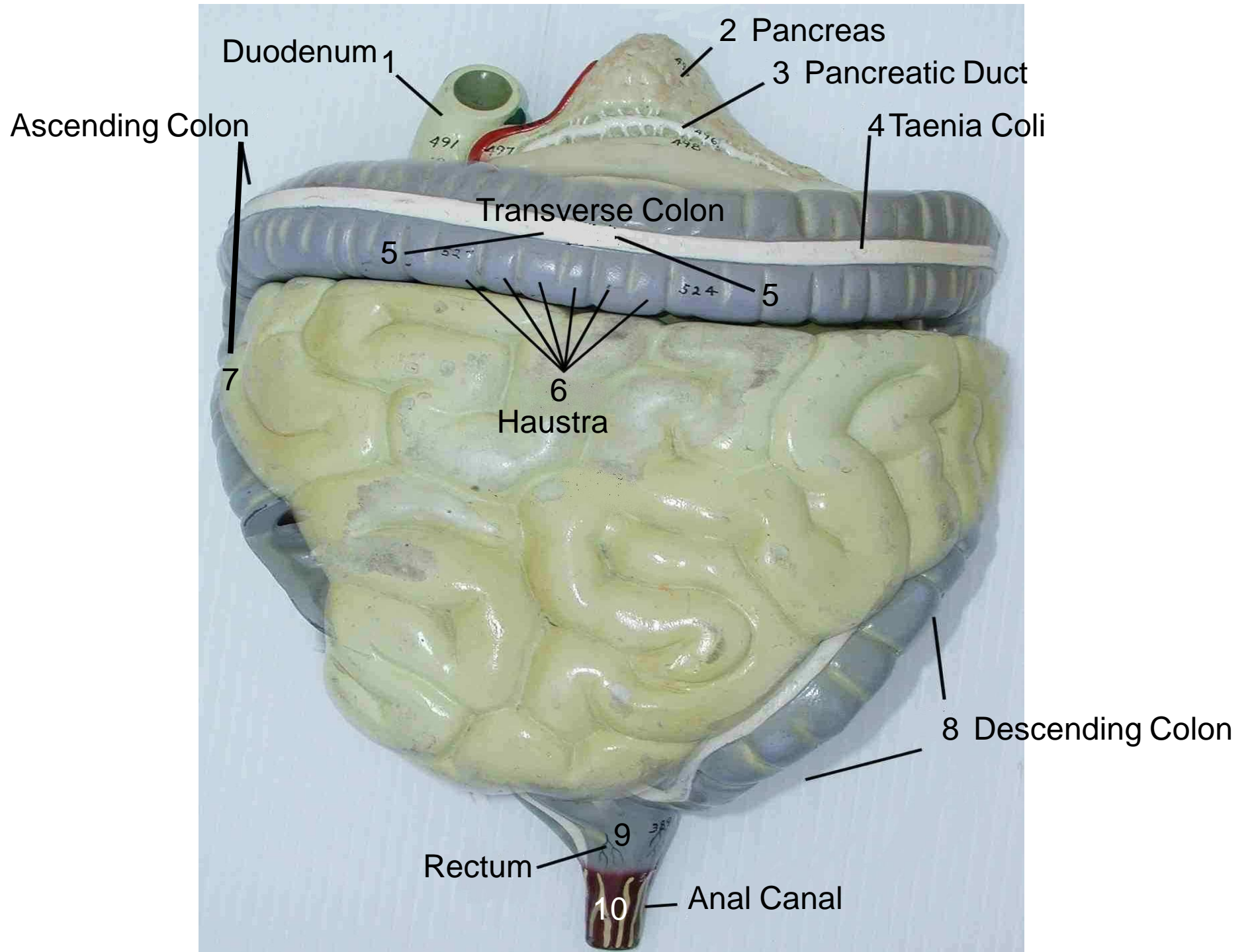
ABC first, then #'s

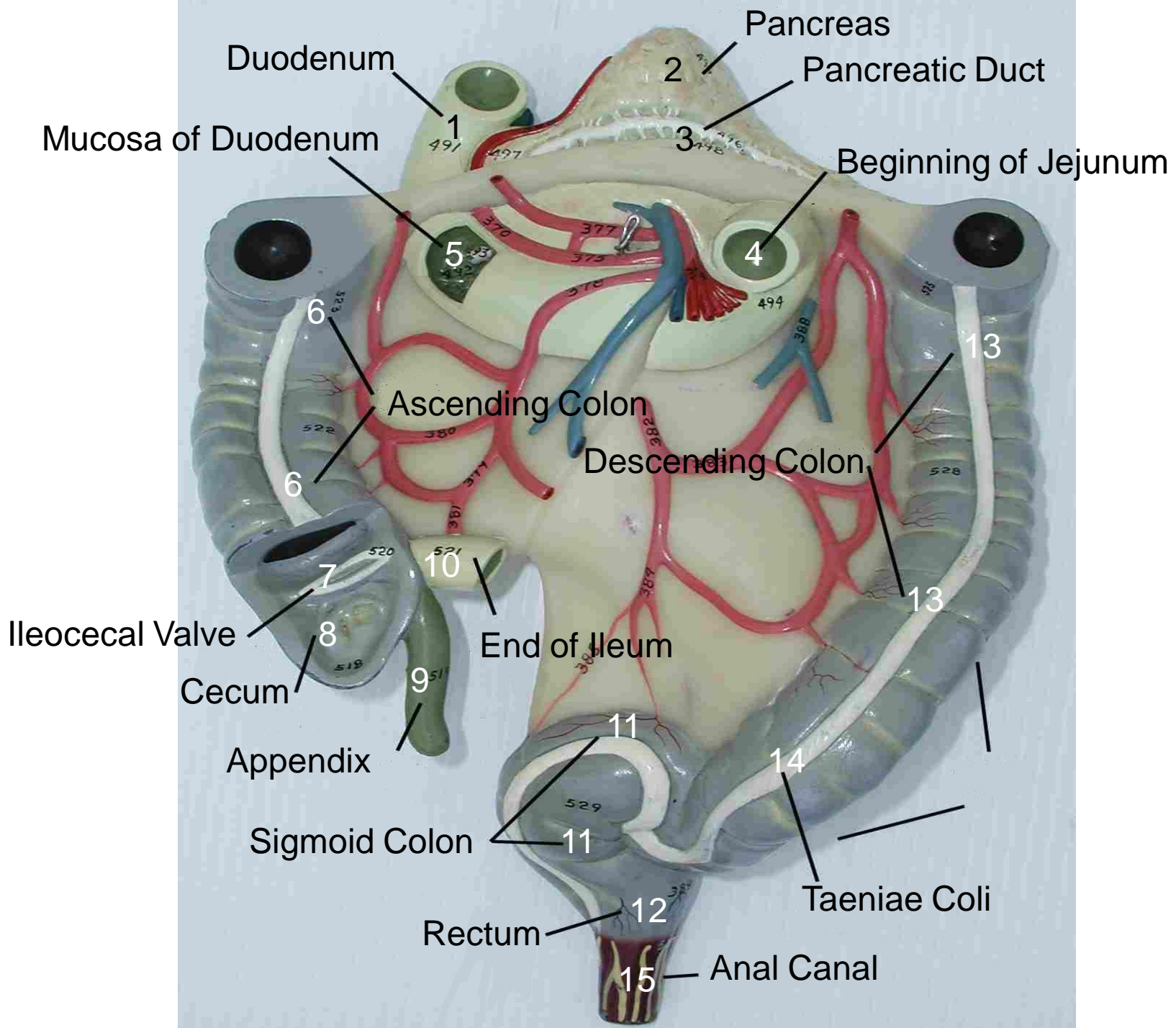


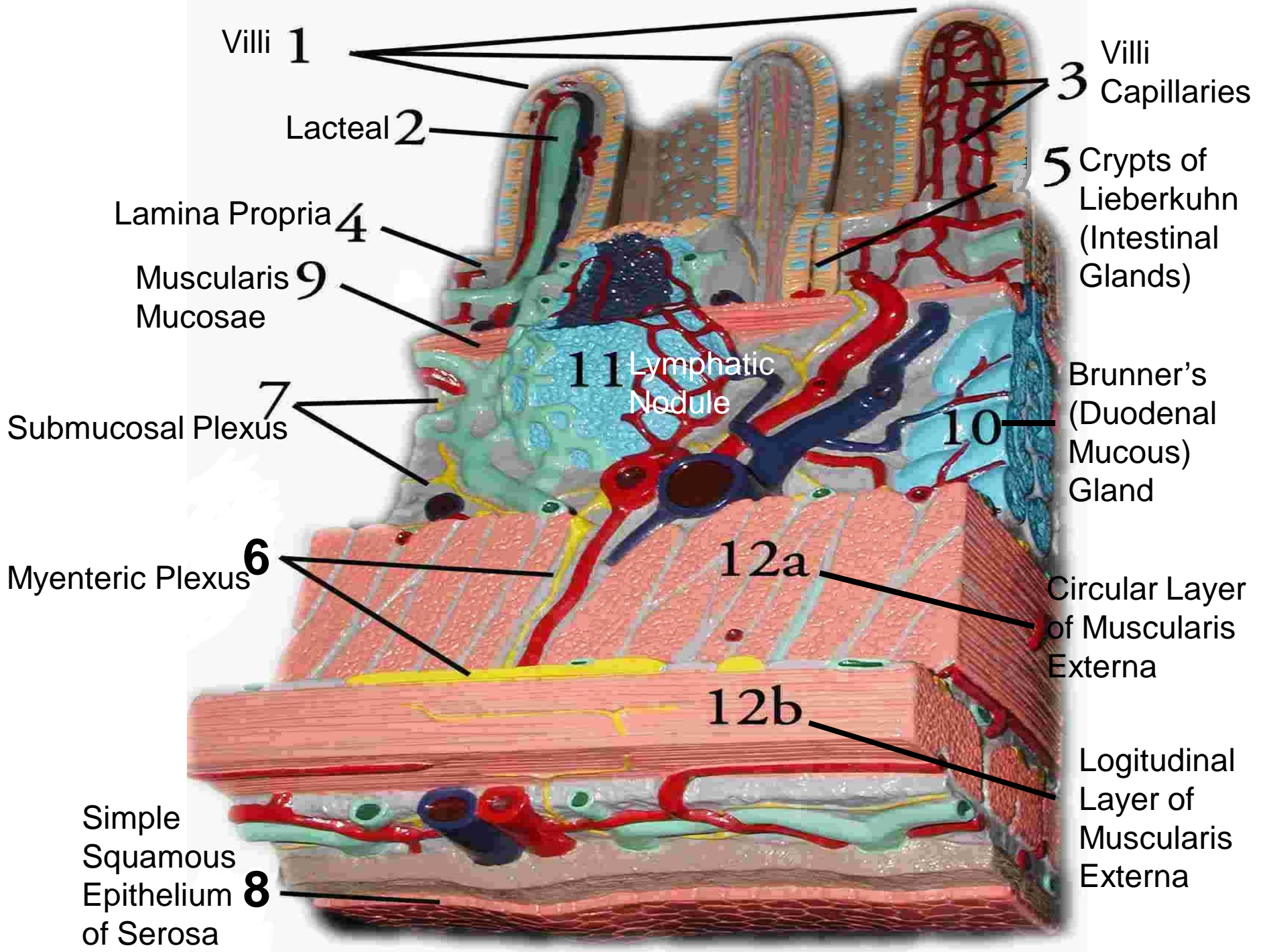
ABC first, then #'s











Villi **1**

Lacteal **2**

Lamina Propria **4**

Muscularis Mucosae **9**

Submucosal Plexus **7**

Myenteric Plexus **6**

Simple Squamous Epithelium of Serosa **8**

11 Lymphatic Nodule

Villi Capillaries **3**

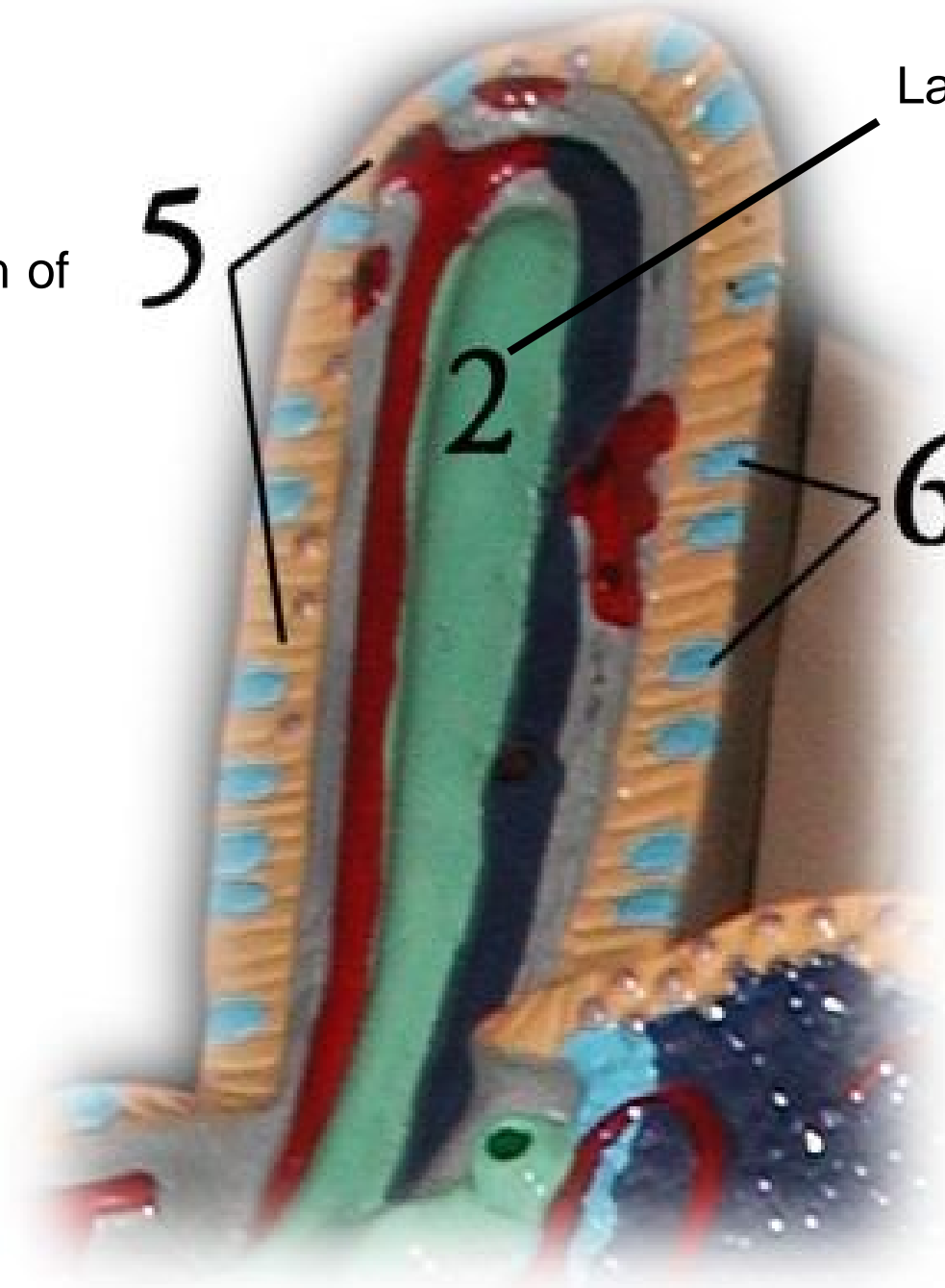
5 Crypts of Lieberkuhn (Intestinal Glands)

Brunner's (Duodenal Mucous) Gland **10**

Circular Layer of Muscularis Externa **12a**

Logitudinal Layer of Muscularis Externa **12b**

Simple
Columnar
Epithelium of
Mucosa



5

2

Lacteal

6

Goblet
Cells